

CERTIFICATE OF ANALYSIS

Alcohol Countermeasure Systems
Alcohol Reference Solution
Lot No: 201502G

Expiry Date: February 24, 2017

This solution was analyzed using the direct injection gas-chromatographic procedure coupled with the internal standard technique commensurate with forensic alcohol methodology.

A screening (pre-mix) analysis of the distilled water used in the preparation of this solution indicated that there were no volatile impurities present.

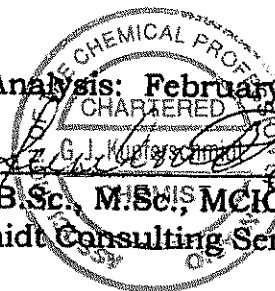
The target analytical concentration was 0.0968 – 0.0992 gram/dL (wt/vol) ethyl alcohol in aqueous solution with an equivalent vapour alcohol concentration of 0.080 - 0.081 g/210L when used in a breath alcohol simulator heated to $34 \pm 0.2^\circ\text{C}$.

The solution was found to have an analytical concentration of 0.0974 gram/dL (wt/vol) ethyl alcohol in aqueous solution with an equivalent vapour alcohol concentration of 0.081 g/210L when used in a breath alcohol simulator heated to $34 \pm 0.2^\circ\text{C}$.

The solution is manufactured from distilled/de-ionized water and absolute ethyl alcohol (USP Grade). This lot contains 1640 bottles (of 500 mL each) of Alcohol Reference Solution.

Date of Analysis: February 24, 2015


G.J. Kupferschmidt, B.Sc., M.Sc., MCIC, C.Chem
G. Kupferschmidt Consulting Services Ltd.



FORCON

Forensic Consulting Services
A Division of G. Kupferschmidt Consulting Services Ltd.
2046 Oxford Ave., Oakville, Ontario, L6H 4K7
Telephone (905) 844-4410; Fax: (905) 844-6959; Email: kcs@forcon.ca

STANDARD ALCOHOL SPECIFICATION SHEET(HP5890)

Lot #: 201502 G Concentration: 80 mg/dl
Date of Analysis: Feb 24/15 Calibration Mix: 100.84 mg/dl
NIST: SKM 2694 Expiry Date: 30 April 2023 ISTD: n-ProH
Source: Fisher lot 134155 Stock ISTD Concentration: 40.1 mg/dl
Stock ISTD Preparation Date: Jan 6/15
ISTD Dilution: 10 → 1000 ISTD Concentration 40.1 mg/dl

Liquid Analysis

HP5890 GC; FID; 4'x1/8" OD; 5% Carbowax 1500 on Porapak Q 80/100 mesh;

Temperatures

Column 110 °C Injector 200 °C Detector 250 °C

0.1 mL calibrator/sample plus 1.0 mL ISTD

2 microlitre injections

SAMPLE RESULTS

NOTES

#1	#2	#3
97.31	97.21	
97.53	97.33	
Average Value:		97.35
Predicted Simulator Value:		80.4

Date: Feb 24/15

Certified: G. Kupferschmidt

Feb 24/15

Jan6/15

40.1 Fisher Lot 134155

				<i>Column1</i>
S1	Cal 17	100.64	12.9041	
	Cal 18	100.86	12.904	
S2	Cal19	100.5	12.9062	Mean 100.68375
	Cal20	100.68	12.9073	Standard Error 0.075378509
S3	Cal21	100.41	12.9099	Median 100.66
	Cal22	101.06	12.9084	Mode #N/A
S4	Cal23	100.53	12.9104	Standard Deviation 0.21320262
	Cal 24	100.79	12.9105	Sample Variance 0.045455357
				Kurtosis -0.17890402
				Skewness 0.579828239
				Range 0.65
				Minimum 100.41
				Maximum 101.06
				Sum 805.47
				Count 8
				Confidence Level(95.0%) 0.178241851

EDIT MENU

- 1 = RUN PARAMETERS
- 2 = TIMETABLE EVENTS
- 3 = REPLACE CALIBRATION
- 4 = INTEGRATION PLOT TYPE
- 5 = RUN DATA STORAGE OPTIONS
- 6 = REPORT OPTIONS
- 7 = PRINT & POST-RUN LIST OPTIONS
- 8 = REMOTE DEVICE ACCESS
- 9 = RANGE SETPOINTS

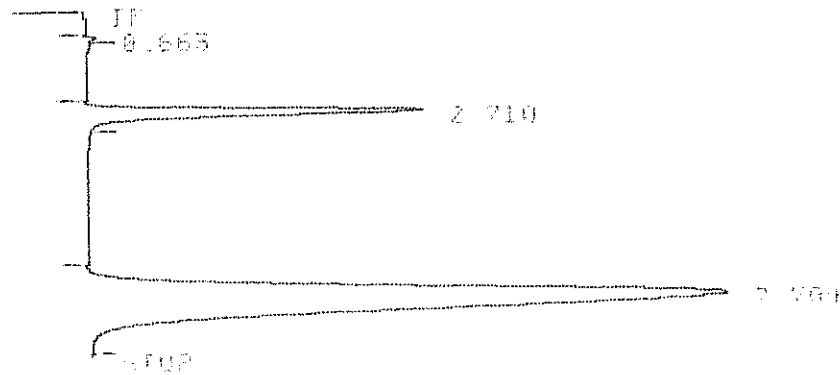
SECTION TO BE EDITED: 6 @

REPORT OPTIONS

Suppress local report [Y/N*]:
HEIGHTX report [Y/N*]:
Replace report title [Y/N*]: Y
Report title: LOT 20150202 S1
Replace amount label [Y/N*]:
Report uncalibrated peaks [Y/N*]:
Extended report [Y/N*]:

SECTION TO BE EDITED:

* RUN # 5484 FEB 24, 2015 14:47:01
START



DATE: 2015 FEB 24, 2015 14:47:01

Method Name: Standard 1.c

Run Number: 21

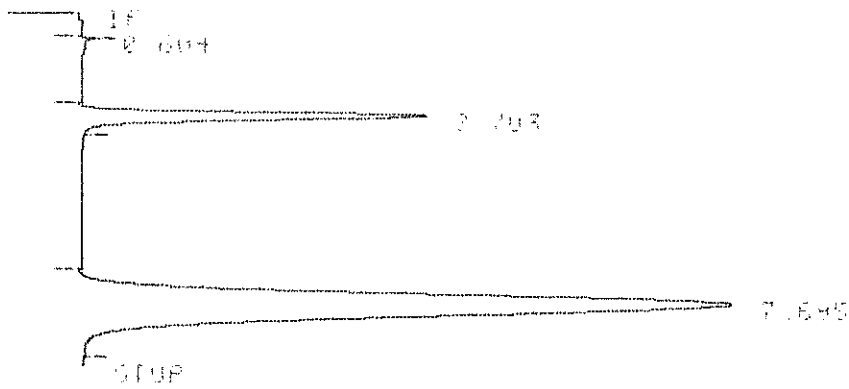
File Name: File Path: File Size

File Name: File Path: File Size

File Name: File Path: File Size

> RUN # 5486 FEB 24, 2015 15:07:07

START



RUN# 5486 FEB 24, 2015 15:07:07

METHOD NAME: M+QUANT.MET

IBID S2

ISTD-AREA

RT	AREA	TYPE	CALC	MG/100
2.703	546802	FB	1	97.014
7.695	2911964	FB	20	

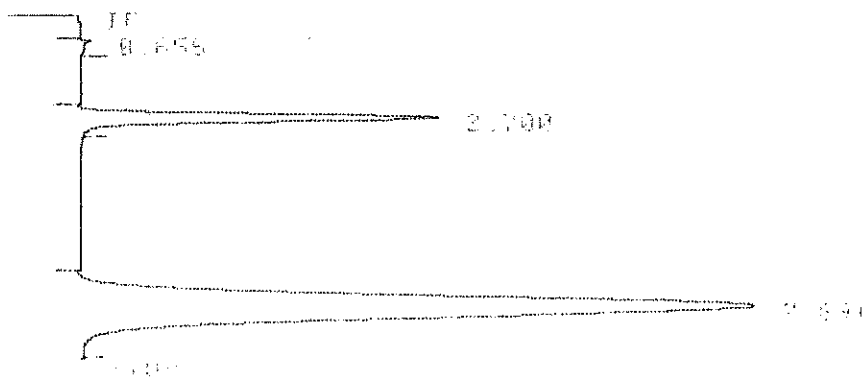
TOTAL AREA=3458766

NUC FACTOR=1.0000E+00

ISTD ANT=4.0100E+01

* RUN # 5487 FEB 24, 2015 15:16:59

START



RUN# 5487 FEB 24, 2015 15:16:59

METHOD NAME: M+QUANT.MET

IBID S2

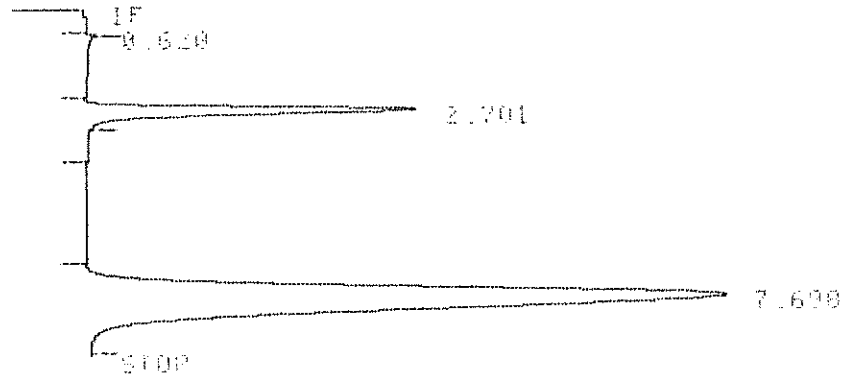
ISTD-AREA

TIME PER=360000
MUL FACTOR=1.0000E+00
DATA AMT=4.0000E+01

*

—

PUN # 5479 FEB 24, 2015 13:55:40
START



PUN# 5479 FEB 24, 2015 13:55:40

METHOD NAME: M*QUANT.DLL

LOT 20150201 S1

ISTD-AREA

RT	AREA	TYPE	CALC#	MS/MS
2.701	520008	PK	1	94.669
7.699	2887474	PK	28	

TOTAL AREA=3417093

NOI FACTOR=1.0000E+00

ISTD AMT=4.0100E+01

* EDIT METH

- 1 = RUN PARAMETERS
- 2 = TIMETABLE EVENTS
- 3 = REPLACE CALIBRATION
- 4 = INTEGRATION PLOT TYPE
- 5 = RUN DATA STORAGE OPTIONS
- 6 = REPORT OPTIONS
- 7 = PRINT & POST-RUN LIST OPTIONS
- 8 = REMOTE DEVICE ACCESS
- 9 = RANGE SETPOINTS

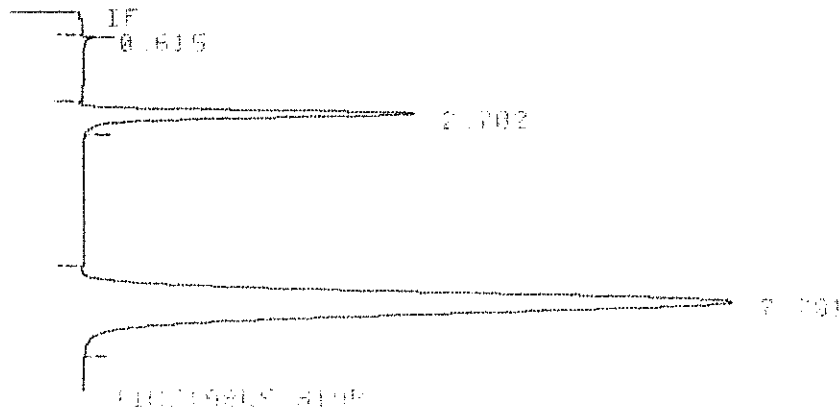
SECTION TO BE EDITED: 6 @

REPORT OPTIONS

Suppress local report [Y/N*]:
HEIGHTX report [Y/N*]:
Replace report title [Y/N*]: Y
Report title: LOT 20150201 S1
Replace amount label [Y/N*]:
Report uncalibrated peaks [Y/N*]:
Extended report [Y/N*]:

SECTION TO BE EDITED:

* RUN # 5477 FEB 24, 2015 12:59:40
START



* RUN # 5477 FEB 24, 2015 12:59:40

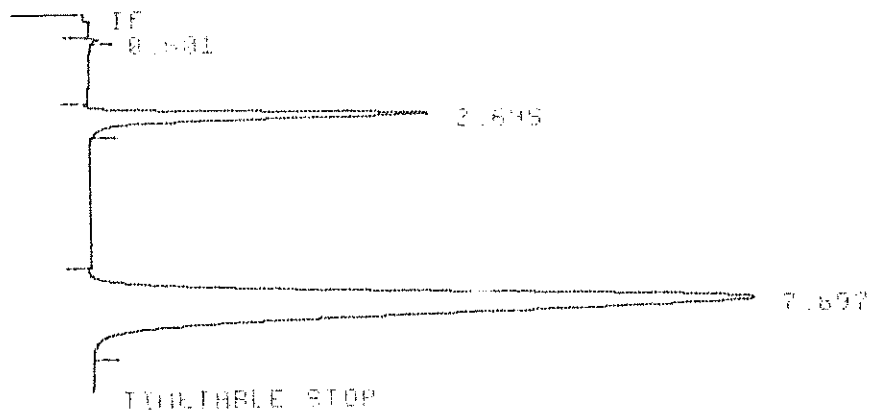
REPORT TITLE: (Y/N*): Y

REPORT TITLE: LOT 20150201 S1

REPORT TITLE: LOT 20150201 S1
REPORT TITLE: LOT 20150201 S1
REPORT TITLE: LOT 20150201 S1

INSTR AREA=100000000
INUL FACTOR=1.0000E+00
ISTD AMT=3.0100E+01

* RUN# 5478 FEB 24, 2015 13:02:49
STOP



RUN# 5478 FEB 24, 2015 13:02:49

METHOD NAME: MQUANT.MET

LOT 20150201 S1

RT	AREA	TYPE	CALC#	PER/100
2.595	593566	PB	1	95.886
7.697	3014918	PB	38	

TOTAL AREA=3572010
INUL FACTOR=1.0000E+00
ISTD AMT=3.0100E+01

* EDIT MENU

- 1 = RUN PARAMETERS
- 2 = TIMETABLE EVENTS
- 3 = REPLACE CALIBRATION
- 4 = INTEGRATION PLOT TYPE
- 5 = RUN DATA STORAGE OPTIONS
- 6 = REPORT OPTIONS
- 7 = PRINT & POST-RUN LIST OPTIONS
- 8 = REMOTE DEVICE ACCESS
- 9 = RANGE SETPOINTS

SECTION TO BE EDITED: 6 @

REPORT OPTIONS

Suppress local report [Y/N*]:
HEIGHT% report [Y/N*]:
Replace report title [Y/N*]: Y
Report title: LOT 2015026 UNICE BLANK
Replace amount label [Y/N*]:
Report uncalibrated peaks [Y/N*]:
Extended report [Y/N*]:

SECTION TO BE EDITED:

* RUN # 5473 FEB 24, 2015 11:00:41
START

IF
0.620

END OF RUN

END OF RUN FEB 24, 2015 11:00:41

END OF RUN FEB 24, 2015 11:00:41

END OF RUN FEB 24, 2015 11:00:41

END OF RUN FEB 24, 2015 11:00:41

END OF RUN FEB 24, 2015 11:00:41

END OF RUN FEB 24, 2015 11:00:41