

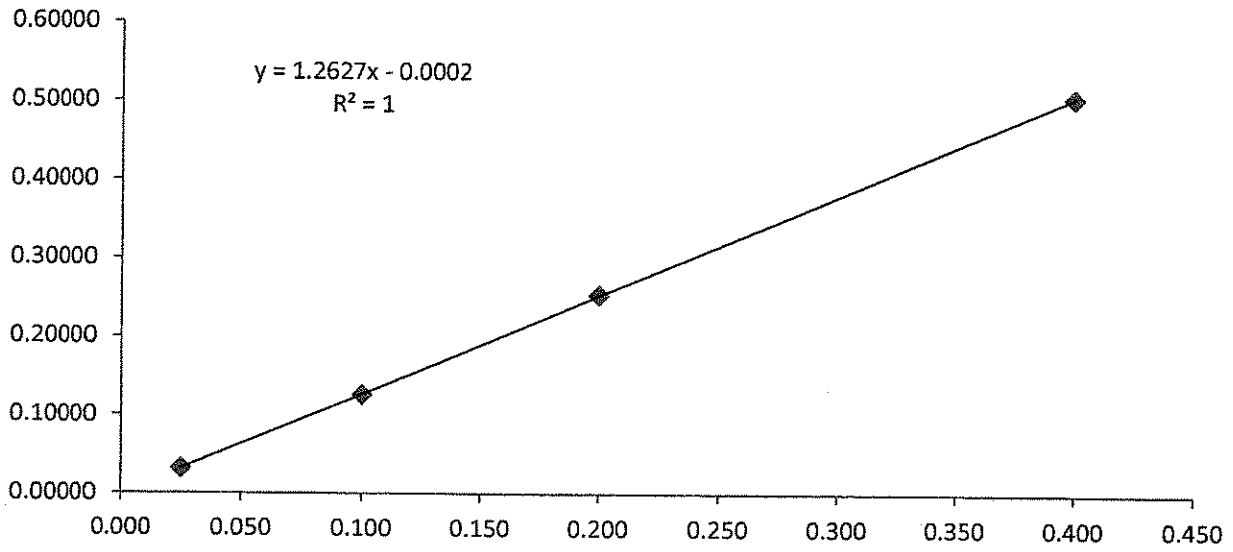
ALCOHOL ANALYSIS QC SUMMARY

Report Date	
Reviewer	Patrick Murphy

RUN SUMMARY DATA				Ethanol			n-Propanol	
Run Date	Channel	Sample	Lot	RT	Area	Conc.	RT	Area
4/16/2013	A	Vols Mix	041513DKR	0.708	19.42750	0.0355	1.201	379.45630
4/16/2013	A	Blank			0.00000	0.0000		0.00000
4/16/2013	A	CER 025	FN032210-01	0.708	11.74941	0.0230	1.201	375.03040
4/16/2013	A	CER 100	FN102609-03	0.708	47.28598	0.0932	1.201	376.47980
4/16/2013	A	CER 200	FN070209-01	0.708	95.34625	0.1871	1.201	376.49649
4/16/2013	A	CER 400	FN040909-01	0.707	189.02032	0.3998	1.201	374.59833
4/16/2013	A	RES 50	A078957	0.708	24.60297	0.0511	1.201	382.59613
4/16/2013	A	1659	201302B	0.708	28.85702	0.0612	1.201	374.57755
4/16/2013	A	1660	201302B	0.708	29.28210	0.0617	1.201	376.69406
4/16/2013	A	1662	201302B	0.708	29.47985	0.0616	1.201	379.78214
4/16/2013	A	1663	201302B	0.708	29.14153	0.0619	1.201	373.53488
4/16/2013	A	1664	201302B	0.708	29.13290	0.0610	1.201	378.94876
4/16/2013	A	1665	201302B	0.708	29.46861	0.0616	1.201	380.02637
4/16/2013	A	1666	201302B	0.708	28.64222	0.0612	1.201	371.40961
4/16/2013	A	1667	201302B	0.708	28.82149	0.0613	1.201	373.46054
4/16/2013	A	1668	201302B	0.708	29.11354	0.0611	1.201	377.94891
4/16/2013	A	1669	201302B	0.708	29.52628	0.0612	1.201	383.05893
4/16/2013	A	RES 100	A077455	0.708	47.79519	0.1004	1.201	377.52640
4/16/2013	A	1659	201302B	0.708	29.15555	0.0611	1.201	378.67041
4/16/2013	A	1660	201302B	0.708	29.39842	0.0616	1.201	379.09488
4/16/2013	A	1662	201302B	0.708	29.33459	0.0618	1.201	377.02368
4/16/2013	A	1663	201302B	0.708	29.25031	0.0611	1.201	380.02606
4/16/2013	A	1664	201302B	0.708	29.34006	0.0611	1.201	380.86929
4/16/2013	A	1665	201302B	0.708	29.18805	0.0614	1.201	377.60623
4/16/2013	A	1666	201302B	0.708	29.37807	0.0612	1.201	380.86404
4/16/2013	A	1667	201302B	0.708	29.38652	0.0614	1.201	379.96896
4/16/2013	A	1668	201302B	0.708	29.46136	0.0613	1.201	381.50684
4/16/2013	A	1669	201302B	0.708	31.17633	0.0627	1.201	394.43320
4/16/2013	A	RES 300	A078448	0.708	149.85825	0.3007	1.201	394.85782

Summary		Standard	g/dL	Ratio	Calc.	Diff
		Blank	0.000	0.00000	0.00000	0.00000
Slope	1.2627	CER 025	0.025	0.03133	0.02495	-0.00005
Intercept	-0.0002	CER 100	0.100	0.12560	0.09960	-0.00040
Standard Error	0.000748739	CER 200	0.200	0.25325	0.20070	0.00070
R-Squared	1.0000	CER 400	0.400	0.50459	0.39975	-0.00025

### Analytical Curve



Source:	Alcohol Countermeasure Systems, Inc.
---------	--------------------------------------

Lot:	201302B
Level:	0.05 g/210L
Manufacture Date:	2/5/2013
Expiration Date:	2/5/2015

Bottle	Result (g/100mL)
1659	0.0612
	0.0611
1660	0.0617
	0.0616
1662	0.0616
	0.0618
1663	0.0619
	0.0611
1664	0.0610
	0.0611
1665	0.0616
	0.0614
1666	0.0612
	0.0612
1667	0.0613
	0.0614
1668	0.0611
	0.0613
1669	0.0612
	0.0627

MEAN	0.0614
STD DEV	0.0004
MIN	0.0610
MAX	0.0627

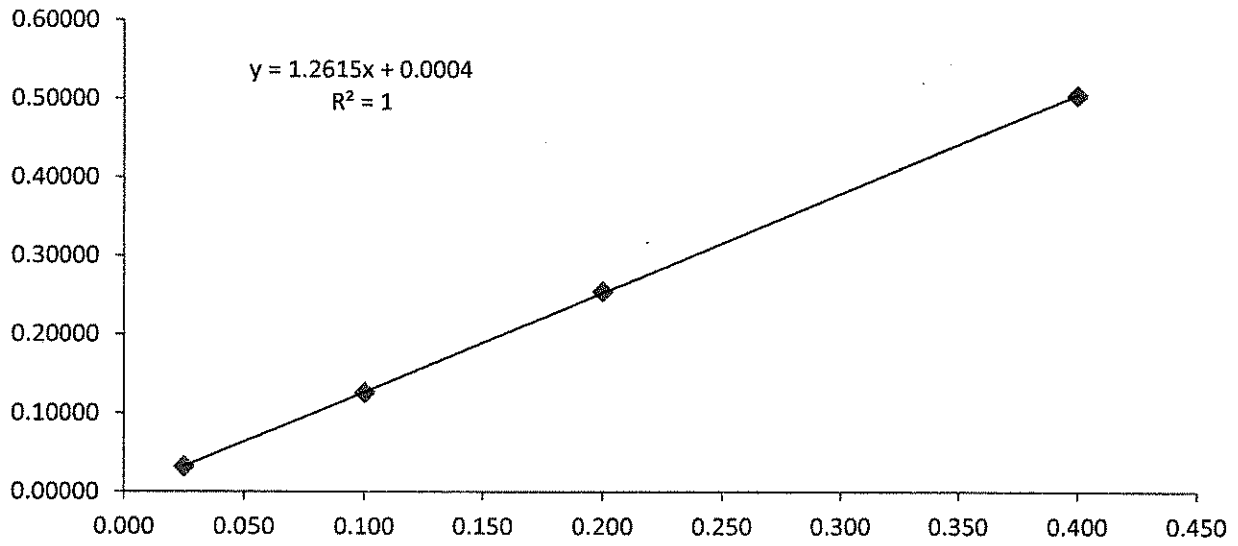
ALCOHOL ANALYSIS QC SUMMARY

<b>Report Date</b>	
<b>Reviewer</b>	Patrick Murphy

RUN SUMMARY DATA				Ethanol			n-Propanol	
Run Date	Channel	Sample	Lot	RT	Area	Conc.	RT	Area
4/17/2013	A	VoIs Mix	041513DKR	0.708	19.59375	0.0365	1.201	372.42715
4/17/2013	A	Blank			0.00000	0.0000		0.00000
4/17/2013	A	CER 025	FN032210-01	0.708	11.87232	0.2301	1.201	377.63370
4/17/2013	A	CER 100	FN102609-03	0.708	47.35976	0.0933	1.201	376.18192
4/17/2013	A	CER 200	FN070209-01	0.708	96.43929	0.1878	1.201	378.77432
4/17/2013	A	CER 400	FN040909-01	0.708	187.63332	0.3994	1.201	372.10507
4/17/2013	A	RES 50	A078957	0.708	24.67171	0.0517	1.201	376.05408
4/17/2013	A	1659	201302B	0.708	28.87219	0.0607	1.201	375.00909
4/17/2013	A	1660	201302B	0.708	28.86501	0.0608	1.201	374.45450
4/17/2013	A	1662	201302B	0.708	29.17557	0.0606	1.201	379.40097
4/17/2013	A	1663	201302B	0.708	29.22219	0.0608	1.201	379.16022
4/17/2013	A	1664	201302B	0.708	29.04383	0.0607	1.201	377.52127
4/17/2013	A	1665	201302B	0.708	29.33216	0.0606	1.201	381.57266
4/17/2013	A	1666	201302B	0.708	29.05394	0.0608	1.201	377.09906
4/17/2013	A	1667	201302B	0.708	29.14404	0.0607	1.201	378.68079
4/17/2013	A	1668	201302B	0.708	29.02370	0.0606	1.201	377.78348
4/17/2013	A	1669	201302B	0.708	29.29787	0.0610	1.201	379.01520
4/17/2013	A	RES 100	A077455	0.708	46.24948	0.1002	1.201	364.67804
4/17/2013	A	1659	201302B	0.708	28.69879	0.0610	1.201	370.80212
4/17/2013	A	1660	201302B	0.708	29.00598	0.0607	1.201	377.11435
4/17/2013	A	1662	201302B	0.708	29.40114	0.0607	1.201	381.88739
4/17/2013	A	1663	201302B	0.708	28.88801	0.0608	1.201	374.65091
4/17/2013	A	1664	201302B	0.708	29.01716	0.0609	1.201	375.86917
4/17/2013	A	1665	201302B	0.708	29.17616	0.0607	1.201	379.36130
4/17/2013	A	1666	201302B	0.708	29.16530	0.0607	1.201	379.24286
4/17/2013	A	1667	201302B	0.708	29.39191	0.0606	1.201	382.26056
4/17/2013	A	1668	201302B	0.708	29.26368	0.0607	1.201	380.20996
4/17/2013	A	1669	201302B	0.708	29.07796	0.0609	1.201	376.68283
4/17/2013	A	RES 300	A078448	0.708	148.75621	0.3014	1.201	390.89590

Summary	Standard	g/dL	Ratio	Calc.	Diff	
	Blank	0.000	0.00000	0.00000	0.00000	
Slope	1.2615	CER 025	0.025	0.03144	0.02461	-0.00039
Intercept	0.0004	CER 100	0.100	0.12590	0.09948	-0.00052
Standard Error	0.001562913	CER 200	0.200	0.25461	0.20151	0.00151
R-Squared	1.0000	CER 400	0.400	0.50425	0.39940	-0.00060

### Analytical Curve



Source:	Alcohol Countermeasure Systems, Inc.
---------	--------------------------------------

Lot:	201302B
Level:	0.05 g/210L
Manufacture Date:	2/5/2013
Expiration Date:	2/5/2015

Bottle	Result (g/100mL)
1659	0.0607
	0.0610
1660	0.0608
	0.0607
1662	0.0606
	0.0607
1663	0.0608
	0.0608
1664	0.0607
	0.0609
1665	0.0606
	0.0607
1666	0.0608
	0.0607
1667	0.0607
	0.0606
1668	0.0606
	0.0607
1669	0.0610
	0.0609

MEAN	0.0607
STD DEV	0.0001
MIN	0.0606
MAX	0.0610

