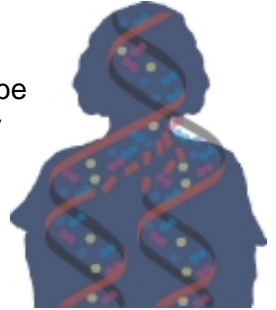


Program Description

The Florida Missing Children Information Clearinghouse (MCIC) and the Florida DNA Investigative Support Database are combining resources to provide law enforcement another useful tool in the location and identification of missing persons throughout Florida and the nation: ***The Florida Missing Persons DNA Database.***

Utilizing current DNA sampling technology in conjunction with local agency missing person reports, law enforcement officials will have the ability to identify or link missing person cases or unidentified human remains. The database will be linked to the Federal Bureau of Investigation's DNA index system, CODIS, which will enable the search to reach beyond Florida's borders and compare samples of other missing persons or unidentified remains.

Once a missing person report has been filed with the local law enforcement agency, a family may be asked to submit personal articles belonging to the missing person, or several family members may be asked to volunteer their own DNA samples. The local law enforcement agency will use a specimen collection kit to collect these family reference samples and submit it to the Florida DNA Database. The DNA results from these submissions will be entered into a database and routinely compared to the DNA results obtained from unidentified human remains.



or visit our web site at www.fdle.state.fl.us
(850) 410-8585 1-888-356-4774
Tallahassee, Florida 32308
2331 Phillips Road

Florida Department of Law Enforcement
Missing Children Information Clearinghouse (MCIC)
contact the:
Florida Missing Persons DNA Database
For additional information regarding the



Florida Missing Persons DNA Database



Sources of DNA

To establish a DNA profile for a person, a standard sample is necessary. This is typically an oral swab or a blood sample taken directly from that person and it represents a “known” source of DNA. If a DNA standard is not available, then a secondary standard can be useful in establishing a DNA profile for that person. The goal of a secondary standard is to select an item that has had direct and prolonged contact with the person in question. The list to the right identifies possible sources of secondary standards. It is critical that the item is **known to have been used exclusively by the person in question**.

A family member** may be asked to volunteer his or her own DNA sample; which is entered into a **Relatives of Missing Persons Index**. Oral swab specimen kits will be available to law enforcement agencies to collect and submit back to the FDLE DNA Database.

If a match occurs, the law enforcement officers involved with the case will be notified so they can contact the family.

The CODIS System

Florida is one of many states that are part of a national DNA identification system known as CODIS (Combined DNA Index System). Through CODIS, DNA submitted by law enforcement agencies can be cross referenced against the Missing Persons Index and the Unidentified Human Remains Index, as well as other available indexes to solve cases involving missing loved ones.

Searchable indexes include:

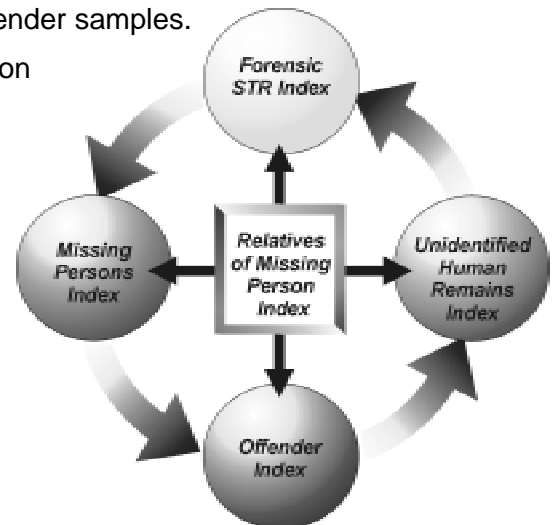
- **Relatives of Missing Persons Index:** includes results from DNA analyses of kindred family members of a missing person.
- **Missing Persons Index:** includes results of DNA analyses on “known secondary standards* of the missing person.
- **Unidentified Human Remains Index:** includes results of DNA analyses obtained from unidentified human remains.
- **Forensic STR Index:** includes results from DNA analyses of forensic casework samples. (*Relatives of a missing person will not be searched against this index unless authorized by the family members.*)
- **Offender Index:** includes the results from DNA analyses of convicted offender samples.



The FDLE Family Reference Collection Form allows relatives of a missing person to select one of the following levels of search options:

Left: Standard Search for the National Missing Persons Index and Florida DNA Investigative Support Database.

Or, Right: Expanded Search for the Florida DNA Investigative Support Database ONLY.



KNOWN DNA STANDARD from Missing Person

- Blood Sample
- Oral Swab Sample
- Biopsy Sample

SECONDARY STANDARD from Missing Person

- Toothbrush *
- Hairbrush *
- Used razor (electric or disposable) *
- Used pacifier or baby bottle *
- Cigarette butts
- Lip balm or lipstick
- Unwashed baby blanket
(possible saliva present)
- Hat
- Shoes
- Unwashed clothing items that had direct skin contact, such as: underwear, socks, shirt, pants
- Drinking glass or can
- Used handkerchief or kleenex

* **Preferred items**

RELATIVES of Missing Person

- Biological Parents **
- Children **
- Brother
- Sister

** **Preferred relatives**