



Alcohol Countermeasure Systems Corp
60 International Boulevard
Toronto, Ontario M9W 5J2
CANADA
T 416 619 3500
F 416 619 3501
www.acs.com

CERTIFICATE OF ANALYSIS

Alcohol Countermeasure Systems
Alcohol Reference Solution
Lot No: 201507A

Expiry Date: July 14, 2017

This solution was analyzed using the direct injection gas-chromatographic procedure coupled with the internal standard technique commensurate with forensic alcohol methodology.

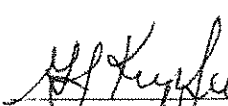
A screening (pre-mix) analysis of the distilled water used in the preparation of this solution indicated that there were no volatile impurities present.

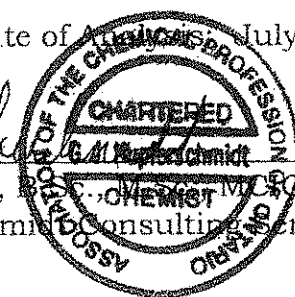
The target analytical concentration was 0.0605 – 0.062 gram/dL (wt/vol) ethyl alcohol in aqueous solution with an equivalent vapour alcohol concentration of 0.05 - 0.051 gram/210L when used in a breath alcohol simulator heated to $34 \pm 0.2^\circ\text{C}$.

The solution was found to have an analytical concentration of 0.061 gram/dL (wt/vol) ethyl alcohol in aqueous solution with an equivalent vapour alcohol concentration of 0.050 g/210L when used in a breath alcohol simulator heated to $34 \pm 0.2^\circ\text{C}$.

The solution is manufactured from distilled/de-ionized water and absolute ethyl alcohol (USP Grade). This lot contains 2500 bottles (of 500 mL each) of Alcohol Reference Solution.

Date of Analysis July 14, 2015


G.J. Kupferschmidt, M.Sc., C.Chem
G. Kupferschmidt Consulting Services Ltd.



FORCON

Forensic Consulting Services
A Division of G. Kupferschmidt Consulting Services Ltd.
2046 Oxford Ave., Oakville, Ontario, L6H 4K7
Telephone (905) 844-4410; Fax: (905) 844-6959; Email: kcs@forcon.ca

STANDARD ALCOHOL SPECIFICATION SHEET(HP5890)

Lot #: 201507A Concentration: 50 mg/dl
Date of Analysis: July 14/15 Calibration Mix: 100.84 mg/dl
NIST: SRM 2894 Expiry Date: 30 April 2023 ISTD: n.A.D.H
Source: Fisher lot 134155 Stock ISTD Concentration: 40.1 mg/ml
Stock ISTD Preparation Date: July 14/15
ISTD Dilution: 10-71000 ISTD Concentration 40.1 mg/dl
Pipettor/Diluter: Microtab 600

Liquid Analysis

HP5890 GC; FID; 4'x1/8" OD; 5% Carbowax 1500 on Porapak Q 80/100 mesh;

Temperatures

Column 110 °C Injector 200 °C Detector 210 °C

0.1 mL calibrator/sample plus 1.0 mL ISTD

2 microlitre injections

SAMPLE RESULTS

NOTES

#1	#2	#3
61.59	60.74	
61.35	61.37	

Average Value: 61.26

Predicted Simulator Value: 50.6

Date: July 14/15

Certified: [Signature]

June 30/15

Apr 14/15

40.1 Fisher Lot 134155

			<i>Column1</i>
S1	100.84	12.8809	
	101.55	12.6329	
S2	101.05	12.8244	Mean 100.775
	100.53	12.8331	Standard Error 0.140318515
S3	100.43	12.8437	Median 100.75
	100.3	12.853	Mode 100.84
S4	100.84	12.856	Standard Deviation 0.396880695
	100.66	12.8594	Sample Variance 0.157514286
			Kurtosis 1.116148711
			Skewness 0.98222888
			Range 1.25
			Minimum 100.3
			Maximum 101.55
			Sum 806.2
			Count 8
			Confidence Level(95.0%) 0.331800564

July 14/15

July 14/15

40.1 Fisher Lot 134155

			<i>Column1</i>
S1	100.84	12.9652	
	101.48	12.9237	
S2	101.42	12.8988	Mean 100.86375
	100.6	12.9062	Standard Error 0.192427514
S3	100.66	12.9105	Median 100.75
	101.5	12.8973	Mode #N/A
S4	100.21	12.9087	Standard Deviation 0.544267201
	100.2	12.9193	Sample Variance 0.296226786
			Kurtosis -1.824442645
			Skewness 0.076856926
			Range 1.3
			Minimum 100.2
			Maximum 101.5
			Sum 806.91
			Count 8
			Confidence Level(95.0%) 0.455018767

EDIT METH

- 1 * RUN PARAMETERS
- 2 * TIMETABLE EVENTS
- 3 * REPLACE CALIBRATION
- 4 * INTEGRATION PLOT TYPE
- 5 * RUN DATA STORAGE OPTIONS
- 6 * REPORT OPTIONS
- 7 * PRINT & POST-RUN LIST OPTIONS
- 9 * REMOTE DEVICE ACCESS
- 9 * RANGE SETPOINTS

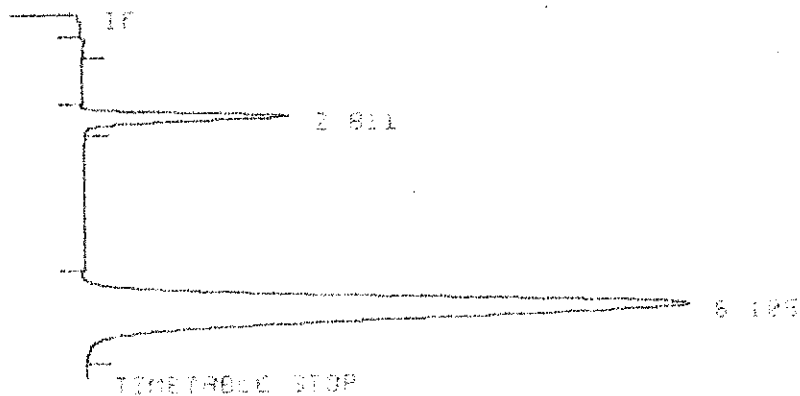
SECTION TO BE EDITED: 6 0

REPORT OPTIONS

Suppress local report (Y/N*):
HEIGHX report (Y/N*):
Replace report title (Y/N*):
Report title: LOT 20150702 01
Replace amount label (Y/N*):
Report uncalibrated peaks (Y/N*):
Extended report (Y/N*):

SECTION TO BE EDITED:

* RUN # 5536 JUL 14, 2015 11:45:13
START



RUN# 5536 JUL 14, 2015 11:45:13

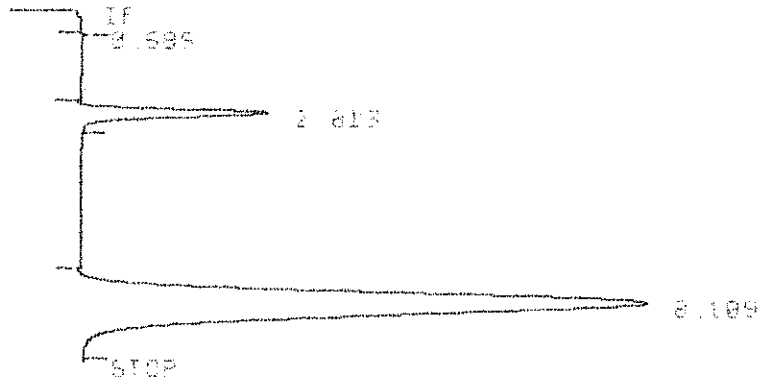
METHOD NAME: D400001.METHOD

LOT: 20150702 01

INSTR-OPER	FILE	AREA	TYPE	FILE #	NO-LIST
	1.811	157794	PS		01.544

TOTAL AREA=3397125
MUL FACTOR=1.0000E+00
ISID ANT=4.0100E+01

* RUN# 4 5937 JUL 14, 2015 11:55:44
START



RUN# 5937 JUL 14, 2015 11:55:44

METHOD NAME: M*QUANT.MET

LOT 20150702 01

ISID-AREA

RT	AREA	TYPE	CALF	HS/100
2.813	337792	PK	1	61.345
8.109	2852634	PK	25	

TOTAL AREA=3191152
MUL FACTOR=1.0000E+00
ISID ANT=4.0100E+01

* LOIT MEH

- 1 = RUN PARAMETERS
- 2 = TIMETABLE EVENTS
- 3 = REPLACE CALIBRATION
- 4 = INTEGRATION PLOT TYPE
- 5 = RUN DATA STORAGE OPTIONS
- 6 = REPORT OPTIONS
- 7 = PRINT & POST-RUN LIST OPTIONS
- 8 = REMOVE DEVICE ACCESS
- 9 = RANGE SELECTION

SECTION 10 SE LOCATED: 0 0

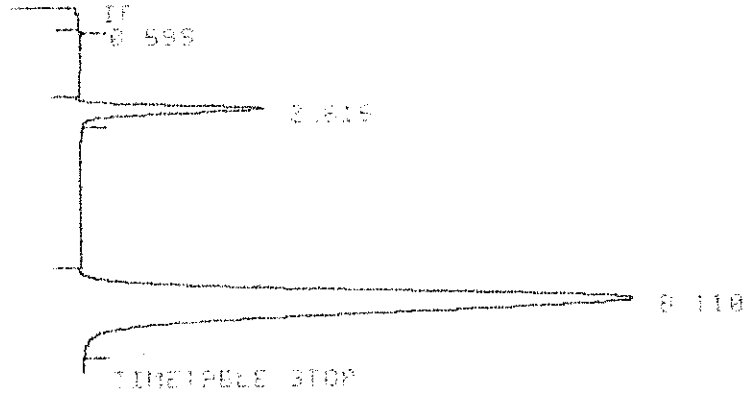
REPORT OPTIONS

Suppress final report (Y/N)*Y
HEIGHTY report (Y/N)*N

Replace amount label [I/M#]:
Report uncalibrated peaks [Y/N#]:
Extended report [Y/N#]:

SECTION TO BE EDITED:

* RUN # 5838 JUL 14, 2015 12:06:17
START



RUN# 5838 JUL 14, 2015 12:06:17

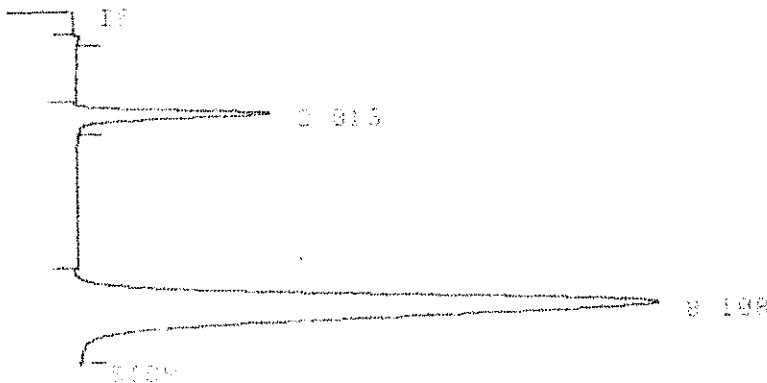
METHOD NAME: M+QUANT.MET

32

ISTD-AREA	RT	AREA TYPE	CALC	MG/100
	0.815	PE	L	60.740
	8.110	FB	26	

TOTAL AREA=3098077 ;
CAL FACTOR=1.0000E+00
ISTD AMT=4.0180E+01

* RUN # 5839 JUL 14, 2015 12:17:05
START



RUN# 5839 JUL 14, 2015 12:17:05

METHOD NAME: M+QUANT.MET

LIST-ORDER

RT	ORDER TYPE	LRCK	NO-104
1 013	194799	FB	1
2 105	259677	FB	23

TOTAL ORDER=3258433

PR FACTOR=1.0000E+00

COST UNIT=4.0120E-01

PREPARATION OF STANDARD ALCOHOL SOLUTION		BATCH	201507A
		PART #	95-000305
		MANF DATE	2015.07.14
EQUIVALENT ETHYL ALCOHOL CONCENTRATION:		50	mg%
Anhydrous Ethyl Alcohol	LOT #	018492	
	EXP:	April 2017	
Target analytical value:	0.610 mg/mL	0.610	mg/mL
Volume:	Nominal	1,265 Litre tank	
	Actual	1,265 - 1,285 Litres	
Mixing:	1 265,000 mL x 0.610 mg/mL of ethanol	= 771,650	mg
		= 772	gm
	Ethanol to add to 1,000 Litre tank for first mix (772 gm / 0.789 gm/mL)	= 978	mL
Analysis 1:	Determine actual conc'n of ethanol in solution = "x"	<input type="text"/>	mg/mL
Calculate:	Volume of ethanol required to make up to target value = "y"		
	$y = (0.610 \times 978) / x$	#DIV/0!	mL
ReMix:	Add proportionate amount of ethanol to make up to target		
	(y - 978) mL of ethanol	#DIV/0!	mL
Analysis 2:	to determine the actual concentration of ethanol in solution		
ReMix:	as above		

S1 59.082

S2 59.14

$\bar{x} = 59.11$

↓

61.0

* EDIT MENU

- 1 * MAIN PARAMETERS
- 2 * UNELABELLED CHEMIS
- 3 * REPLACE UNELABELLED
- 4 * INTEGRATION POINT TYPE
- 5 * RUN DATA STORAGE OPTIONS
- 6 * REPORT OPTIONS
- 7 * PRINT & POST-RUN LIST OPTIONS
- 8 * REMOTE DEVICE ACCESS
- 9 * RANGE SETPOINTS

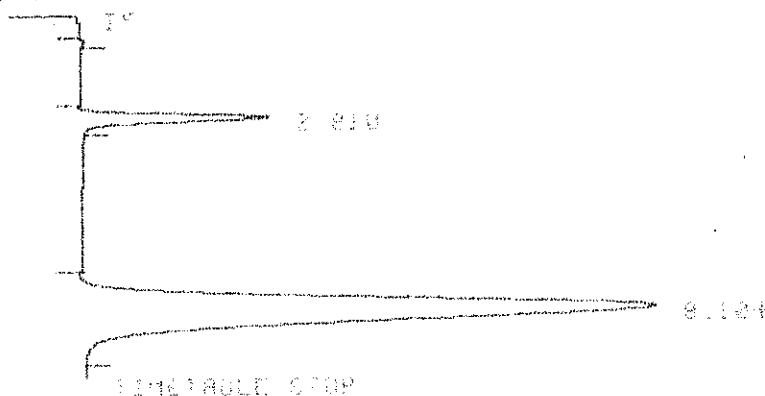
SECTION TO BE EDITED: 6 0

REPORT OPTIONS

Suppress local report (Y/N)*:
HEIGHT report (Y/N)*:
Replace report title (Y/N)*: V
Report title: LOI 20150701 01
Replace amount label (Y/N)*:
Report uncalibrated peaks (Y/N)*:
Extended report (Y/N)*:

SECTION TO BE EDITED:

* RUN # 5850 JUL 14, 2015 09:59:08
START



RUN # 5850 JUL 14, 2015 09:59:08

METHOD: FID

ALL DATA ARE:

RT	AREA	TIME	CONC	HT
2.810	1.11E+05	95	1	1.11E+05
8.124	1.11E+05	75	12	1.11E+05

TOTAL AREA = 2.22E+05
MUL FACTOR = 1.000E+00

*

REPORT

* EDIT METH

- 1 * RUN PARAMETERS
- 2 * TIMETABLE EVENTS
- 3 * REPLACE CALIBRATION
- 4 * INTEGRATION PLOT TYPE
- 5 * RUN DATA STORAGE OPTIONS
- 6 * REPORT OPTIONS
- 7 * PRINT & POST-RUN LIST OPTIONS
- 8 * REMOTE DEVICE ACCESS
- 9 * RANGE SETPOINTS

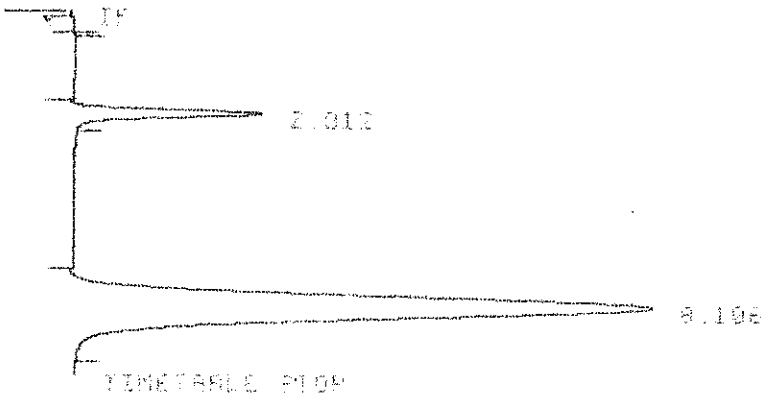
SECTION TO BE EDITED: 6 @

REPORT OPTIONS

Suppress local report (Y/N):
 RETURN report (Y/N):
 Replace report title (Y/N): Y
 Report title: 892
 Replace amount label (Y/N):
 Report uncalibrated peaks (Y/N):
 Extended report (Y/N):

SECTION TO BE EDITED:

* RUN # 5931 JUL 14, 2015 09:58:56
 START



RUN# 5931 JUL 14, 2015 09:58:56

METHOD NAME: INJECTANT.MET

892

FILE: 00000

RT	AREA	TYPE	CALC	MS-100
2.012	1000000	PK	1	58.040
8.106	10000000	PK	20	

TOTAL AREA=10000000
 FILE FOLDER=1 00000000

* * PREP METHOD

RUN PARAMETERS
ZERO 0 0 0: 00000

* EDIT METHOD

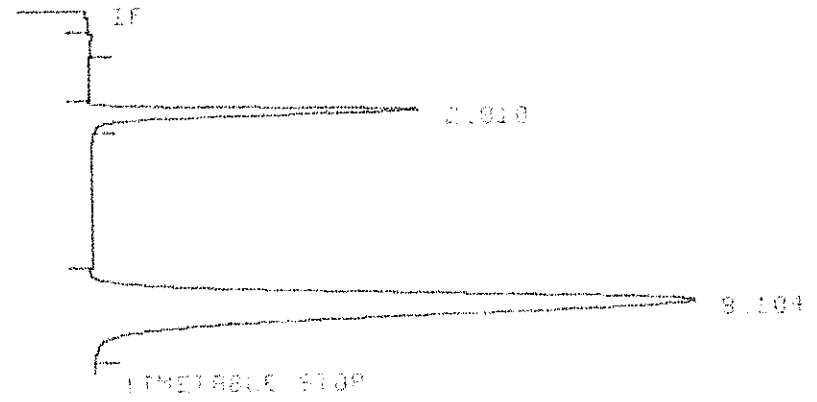
- 1 - RUN PARAMETERS
- 2 - TIMETABLE EVENTS
- 3 - PEAKS CALIBRATION
- 4 - INTEGRATION POINT TYPE
- 5 - RUN DATA STORAGE OPTIONS
- 6 - REPORT OPTIONS
- 7 - PRINT & POST-RUN LIST OPTIONS
- 8 - REMOTE DEVICE ACCESS
- 9 - RANGE SLIDING

SECTION TO BE EDITED: 6 @

REPORT OPTIONS
 Suppress local report (Y/N*):
 HEIGHTS report (Y/N*):
 Replace report title (Y/N*):
 Report title: E-031 S1
 Replace amount label (Y/N*):
 Report uncalibrated peaks (Y/N*):
 Extended report (Y/N*):

SECTION TO BE EDITED:

* RUN # 6926 JUL 14, 2015 08:53:27
 START



RUN# 6926 JUL 14, 2015 08:58:07

METHOD NAME: M-COUNT.DET

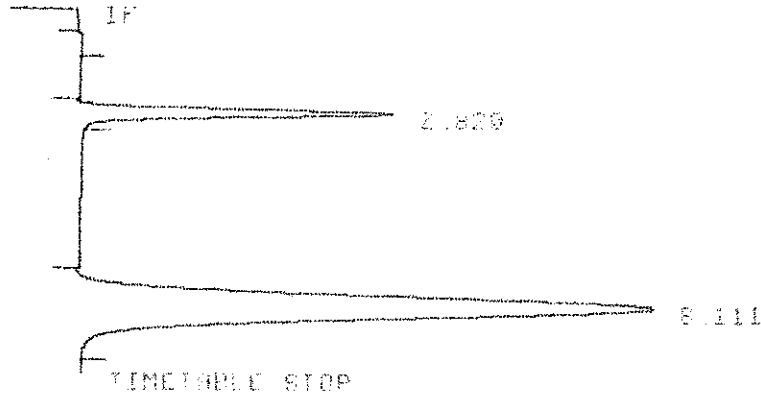
E-031 S1

1510 AREA

0.104 3039022 PB 28 100.000

TOTAL AREA=3625918
MUL FACTOR=1.0000E+00
ISTD AMT=4.0100E+01

* RUN # 5927 JUL 14, 2015 09:06:25
START



RUN# 5927 JUL 14, 2015 09:06:25

METHOD NAME: M*QUANT.MET

C-051 91

ISTD-AREA

RT	AREA	TYPE	CAL#	MG/100
2.820	555967	PB	1	99.749
8.111	1067533	PB	20	

TOTAL AREA=3443499
MUL FACTOR=1.0000E+00
ISTD AMT=4.0100E+01

* EDIT METH

- 1 = RUN PARAMETERS
- 2 = TIMETABLE EVENTS
- 3 = REPLACE CALIBRATION
- 4 = INTEGRATION PLOT TYPE
- 5 = RUN DATA STORAGE OPTIONS
- 6 = REPORT OPTIONS
- 7 = PRINT & POST-RUN (LTS) OPTIONS
- 8 = PLINTE DEVICE ACCESS
- 9 = RANGE SETPOINTS

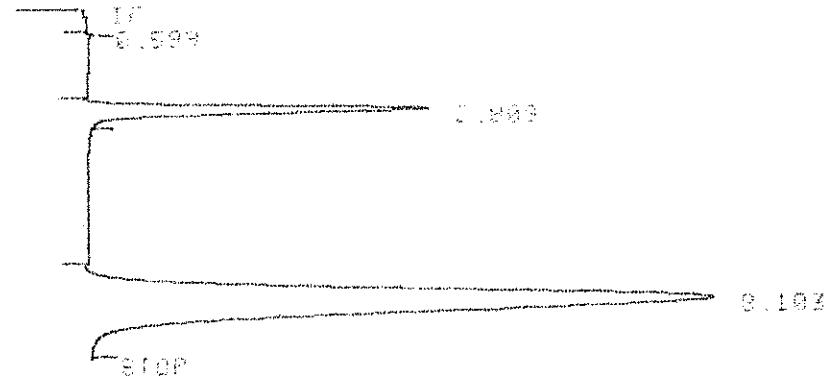
SELECTION TO BE EDITED: 6 @

REPORT OPTIONS

REPORT TITLE:
 Replace report title (Y/N): Y
 Report title: L-031 92
 Replace amount label (Y/N):
 Report uncalibrated peaks (Y/N):
 Extended report (Y/N):

SECTION TO BE RUN:

+ RUN # 5028 JUL 14, 2015 09:17:20
 START



RUN# 5028 JUL 14, 2015 09:17:26

METHOD NAME: M*GURDI.MET

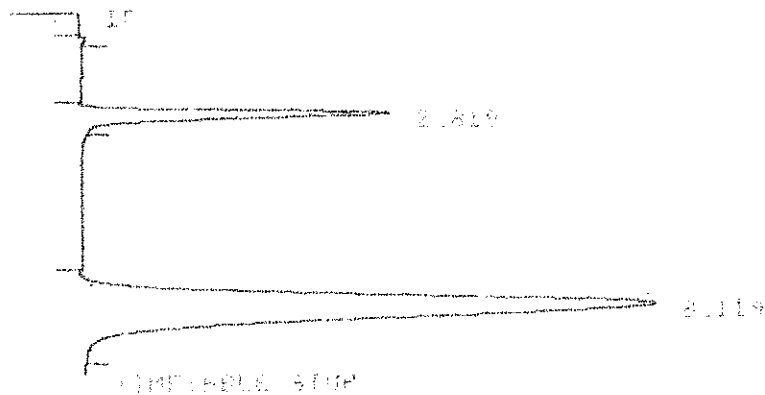
L-031 92

ISTD-AREA

RT	AREA	TYPE	CHLW	RG/100
2.800	684758	PK	1	94.881
8.102	3147218	PK	28	

TOTAL AREA=3753573
 MUL FACTOR=1.0000E+00
 ISTD AMT=4.6100E+01

+ RUN # 5029 JUL 14, 2015 09:17:26
 START



RUN# 5029

JUL 14, 2015 09:17:26

METHOD NAME: INTEGRAL

0.031 52

ISID=AREA

R1	AREA	TYPE	CH.#	16/100
2.819	534551	FB	1	99.915
8.114	2952945	FB	28	

TOTAL AREA=3487496

MDL FACTOR=1.0000E+00

ISID ANT=4.0160E+01

*

S1	100.05
	99.15
S2	99.53
	99.02
	<hr/>
\bar{X}	= 99.59

* EDIT MENU

- 1 = RUN PARAMETERS
- 2 = TIMETABLE EVENTS
- 3 = REPLACE CALIBRATION
- 4 = INTEGRATION AND TYPE
- 5 = RUN DATA STORAGE OPTIONS
- 6 = REPORT OPTIONS
- 7 = PRINT & POST-RUN LIST OPTIONS
- 8 = REMOVE DEVICE ACCESS
- 9 = RANGE SETTINGS

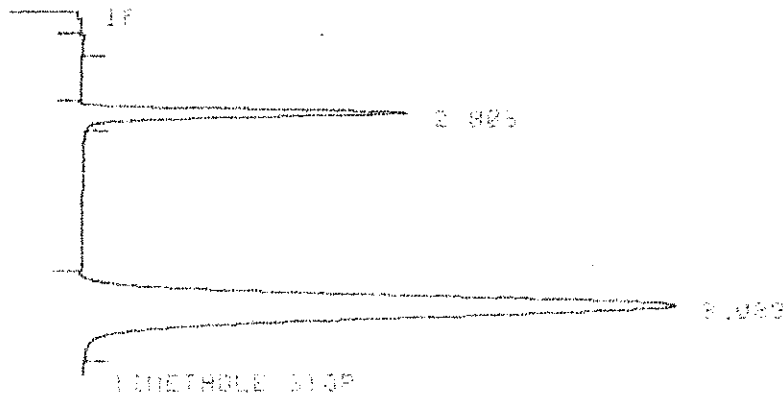
SECTION TO BE EDITED: 6 @

REPORT OPTIONS

Suppress local report by N*3:
HEIGHT% report (Y*4)0:
Replace report title (Y*5)3:
Report title: CAL S1
Replace amount label (Y*6)3:
Report uncalibrated peaks (Y*7)0:
Extended report (Y*8)0:

SECTION TO BE EDITED:

* RUN # 5018 JUL 14, 2015 07:12:23
START



RUN# 5018 JUL 14, 2015 07:12:23

METHOD NAME: M*00001.MET

CAL S1

1010-AREA

RT	AREA	TYPE	UNL#	MS-LOR
1.17	877.191	08	1	100.016
1.88	8978.309	08	2	

ISID-AREA
ISID-RT=4.0100E+01

* CALIB -1 0

ISID

REF S RTN: 5.000 NON-REF S RTN: 5.000

LEVEL: 1

RECALIBRATIONS: 1

CHN#	RT	ID	AMT	AMT-REF#
1	2.001	1	1.000E+00	1.000E+00
20	0.002	1	4.0100E+01	1.3472E+05

CHN# NAME
1 ETHANOL
20 N-PROPANOL

CALIBRATION OPTIONS

RT of uncalibrated peaks: 0.0000E+00
Calibration fit: P
Disable post-run RT update: NO
ISID peak #: 0
ISID AMT: 4.0100E+01
SAMPLE AMT: 0.0000E+00
MUL FACTOR: 1.0000E+00

* REPORT

RUN# 5018 JUL 14, 2015 07:10:23

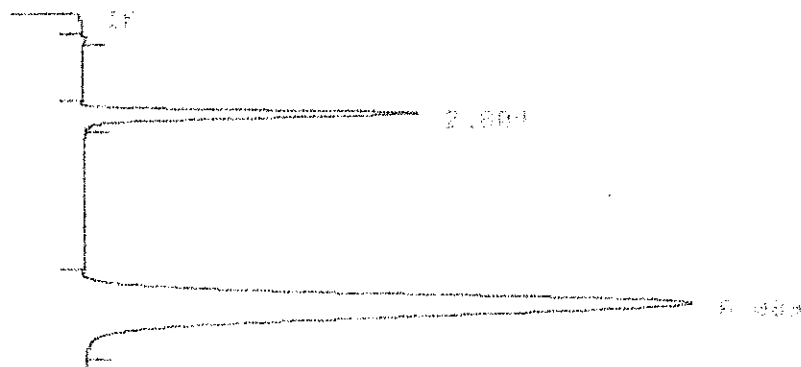
METHOD NAME: H*QUANT.ME1

CAL 01

ISID-AREA	RT	AREA	TYPE	CHN#	MG-100
	2.005	577191	FB	1	100.040
	0.009	2975234	FB	20	

TOTAL AREA=2653000
MUL FACTOR=1.0000E+00
ISID-RT=4.0100E+01

* RUN: 5018 JUL 14, 2015 07:24:15
CLAMP



METHOD NAME: N-PROPANE.MET

CHL 51

ISTD-AREA

RT	AREA	TYPE	CHL#	MS	ISG
2.884	588538	PS	1	101	93
2.889	882560	PS	25		

TOTAL AREA=361898
 MUL FACTOR=1.0000E+00
 ISTD AMT=0.4188E+01

* CALIB 1 2
 ISTD
 REF X RTU: 5.000 NON-REF X RTU: 5.000

LEVEL: 1 RECALIBRATIONS: 2

CHL#	RT	LV	AMT	AMT/AREA
1	2.881	1	1.6884E+02	1.7270E-04
18	8.883	1	1.6105E+01	1.5863E-05

CHL# NAME
 1 ETHANOL
 2 N-PROPANE

CALIBRATION OPTIONS
 RF of uncalibrated peaks 0.0000E+00
 Calibration fit F
 Disable post-run PI update .. NO
 ISTD peak # 2
 ISTD AMT 4.0100E+01
 SAMPLE AMT 0.0000E+00
 MUL FACTOR 1.0000E+00

* EDIT METH

- 1 = RUN PARAMETERS
- 2 = VARIABLE EVENTS
- 3 = MANUAL DESCRIPTION
- 4 = INTEGRATION FLDT TYPE
- 5 = RUN DATA STORAGE OPTIONS
- 6 = REPORT OPTIONS
- 7 = PRINT & POST-RUN LIST OPTIONS
- 8 = REMOVE DEVICE ACCESS
- 9 = RANGE SETTINGS

SECTION TO BE EDITED: 5 2

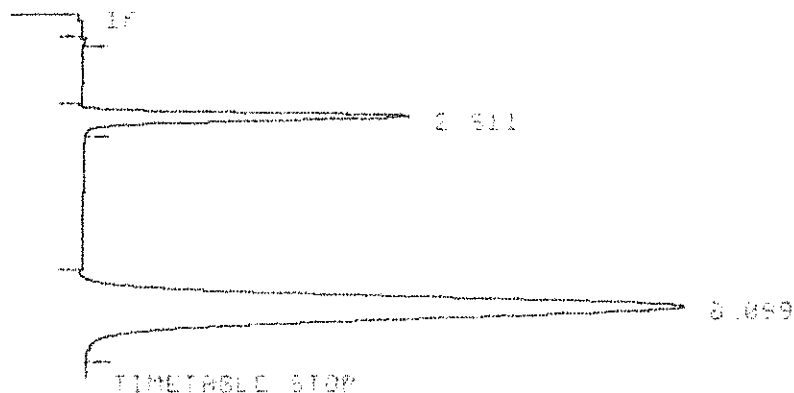
REPORT OPTIONS

Suppress local report (Y/N):
 Global report (Y/N):
 Report name title (Y/N):
 Report title: CHL 51

Report generated on: 07/14/2015
Extended report LYN#3:

SECTION TO BE EDITED:

* RUN # 5820 JUL 14, 2015 07:35:35
START:



RUN# 5820 JUL 14, 2015 07:35:35

METHOD NAME: M*QUANT.DET

CAL 52

LIST-AREA

RT	AREA	TYPE	COL#	FS/100
2.011	500296	PB	1	181.422
3.099	3016290	PB	28	

TOTAL AREA=3566586

MUL FACTOR=1.8000E+00

LIST AREA=4.0128E+01

* CALIB 1 0

LIST

REF X REF: 5.000 NON-REF X RTU: 5.000

LEVEL: 1 RECALIBRATIONS: 3

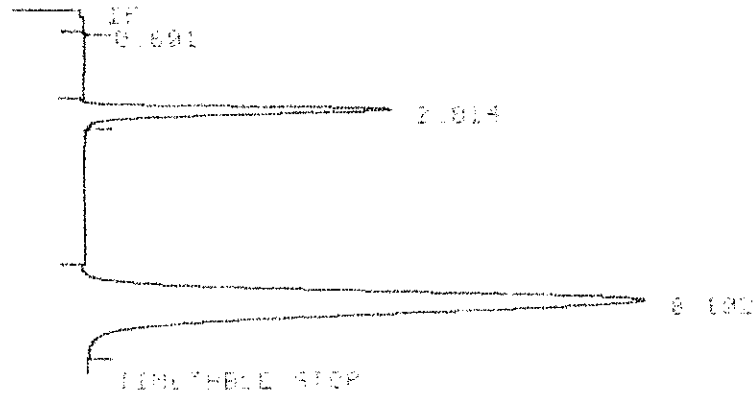
COL#	RT	LD	RTT	REF-AREA
1	2.000	1	1.0000E+02	1.7207E-09
28	3.000	1	4.0160E+01	1.3340E-00

CHLA NAME
1 ETHANOL
2 n-PROPANOL

CALIBRATION OPTIONS

RT >? designated peaks NO 0.0000E+00
Calibration fit P
Disable post-run RT update NO
LIST peak # 2
LIST REF 0.0000E+00
CHLA: 10% 0.0000E+00
MUL FACTOR 1.8000E+00

START



RUN# 5823 JUL 14, 2015 07:46:17

CLIENT NAME: M*QUANT DET

CALL 52

ISTD-AREA

RT	AREA	TYPE	CALL	MS-100
2.914	513701	PK	1	100.000
8.102	2701526	PK	20	

TOTAL AREA=3215227

MUL FACTOR=1.0000E+00

ISTD AMT=4.8100E+01

* CHLIB 1 0

ISTD

REF 2 RT0: 5.000 NON-REF 2 RT0: 5.000

LEVEL: 1

RECALIBRATIONS: 4

CALL#	RT	LD	AMT	AMT/AREA
1	2.905	1	1.0000E+02	1.7524E-04
20	8.098	1	4.8100E+01	1.0070E-05

CALL# NAME

1 ETHANOL

20 N-PROPANOL

INTERPRETION OPTIONS

PEAKS OF uncalibrated peaks 0.0000E+00

Calibration fit 0

Visible position RI update ... NU

CRF peak # ... 0

ISTD AMT ... 4.8100E+01

CALIB AMT ... 0.0000E+00

MUL FACTOR ... 1.0000E+00

* EXIT CODE

1 = RUN PARAMETERS

2 = INTEGRABLE EVENTS

- 7 - INTEGRATION FILE TYPE
- 8 - RUN DATA STORAGE OPTIONS
- 9 - REPORT OPTIONS
- 0 - PRINT & POST-RUN LIST OPTIONS
- 1 - REMOTE DEVICE ACCESS
- 2 - RANGE SLIPPOINTS

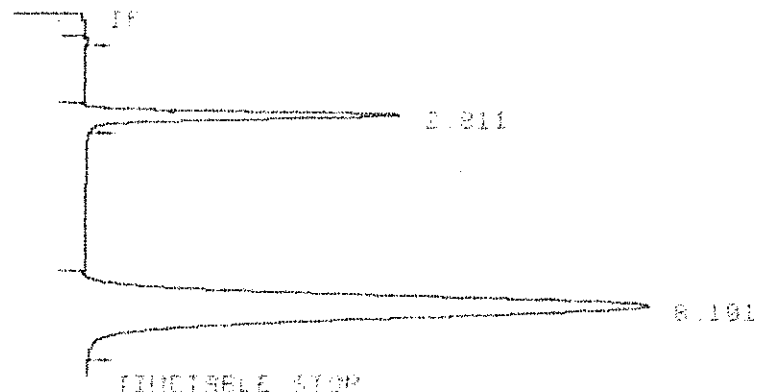
SECTION TO BE EDITED: 9 @

REPORT OPTIONS

Suppress local report (Y/N*):
 HEIGHT (report) (Y/*N):
 Replace report title (Y/*N*): Y
 Report title: CAL 93
 Replace amount label (Y/*N):
 Report uncalibrated peaks (Y/*N*):
 Extended report (Y/*N):

SECTION TO BE EDITED:

* RUN # 9832 JUL 14, 2015 07:57:41
 START



RUN# 9832 JUL 14, 2015 07:57:42

METHOD NAME: *QUANT.MET

CAL 93

1810-9832

RT	AREA	TYPE	CAL#	NO.100
2.811	545908	PK	1	180 699
8.101	2612320	PK	26	

TOTAL AREA=3358228
 MUL FACTOR=1.0000E+00
 1810 AMT=4.3189E+01

* INCTB 1 @

1810
 REF A B10 5.000 100-RET A B10 5.000

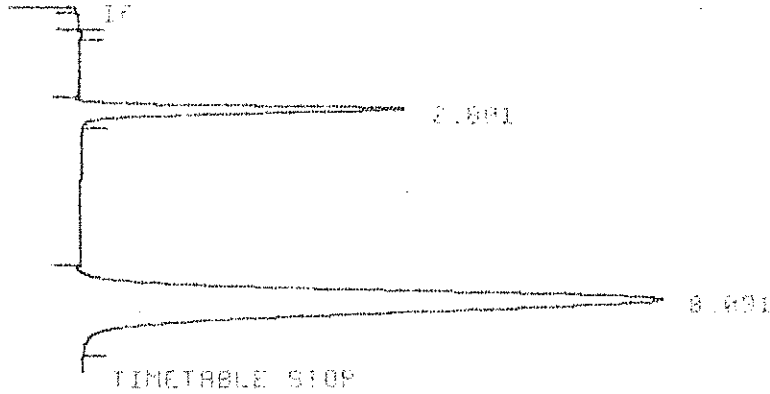
LABEL: 1 CALIBRATIONS: 5

CAL# RT CH AMT INCORPORATED

CAL# NAME
 1 ETHANOL
 2 N-PROPANOL

CALIBRATION OPTIONS
 RT of uncalibrated peaks: 0.0000E+00
 Calibration fit: P
 Disable post-run RT update: NO
 ISTD peak # 2
 ISTD AMT: 4.0100E+01
 SAMPLE AMT: 0.0000E+00
 MUL FACTOR: 1.0000E+00

* RUN # 5923 JUL 14, 2015 05:00:26
 START



RUN# 5923 JUL 14, 2015 05:00:26

METHOD NAME: M*QUANT.MET

CAL 53

ISTD-AREA	RT	AREA	TYPE	CAL#	MG/100
568054	2.801	568054	PR	1	101.486
2857489	8.001	2857489	PR	28	

TOTAL AREA=3465522
 MUL FACTOR=1.0000E+00
 ISTD AMT=4.0100E+01

* CALIB 1 0
 ISTD
 REF 1 RTU: 6.000 NON-REF 2 RTU: 6.200

LEVEL: 1 RECALIBRATIONS: 5

CAL#	RT	LV	AMT	RT1/AMN
1	2.004	1	1.0000E+00	1.2700E+04
28	6.000	2	4.0100E+01	1.3700E+05

CAL# NAME
 1 ETHANOL

CALIBRATION OPTIONS

RF of uncalibrated peaks 0.0000E+00
Calibration fit F
Disable post-run RF update NO
LSD peak # 2
LSD AMT 4.0100E+01
SAMPLE AMT 0.0000E+00
MUL FACTOR 1.0000E+02

* EDIT MENU

- 1 * RUN PARAMETERS
- 2 * TIMETABLE EVENTS
- 3 * REPLACE CALIBRATION
- 4 * INTEGRATION PLOT TYPE
- 5 * RUN DATA STORAGE OPTIONS
- 6 * REPORT OPTIONS
- 7 * PRINT & POST-RUN LIST OPTIONS
- 8 * REMOTE DEVICE ACCESS
- 9 * RANGE SETPOINTS

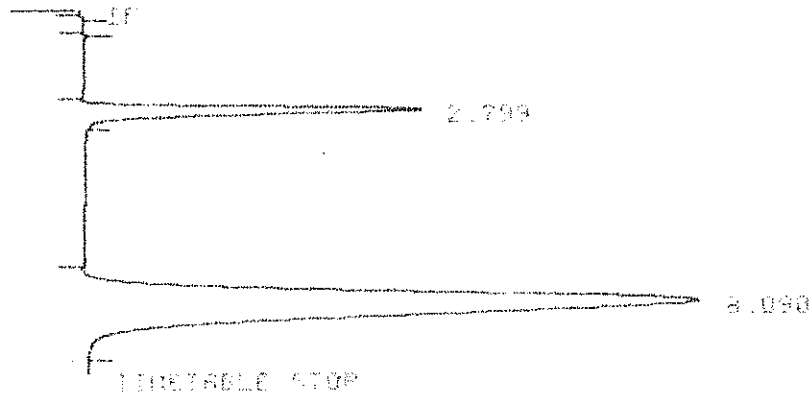
SECTION TO BE EDITED: 6 @

REPORT OPTIONS

Suppress local report (Y/N#1):
HEIGHTX report (Y/N#2):
Replace report title (Y/N#3):
Report title: CAL 04
Replace amount label (Y/N#3):
Report uncalibrated peaks (Y/N#3):
Extended report (Y/N#3):

SECTION TO BE EDITED:

* RUN # 5824 JUL 14, 2015 09:19:44
SIHRT



RUN# 5824 JUL 14, 2015 09:19:44

METHOD NAME: M*05071.MET

CAL 04

LIST PEAK

RT	HEIGHT	AREA	CHG	NO. OF
2.799	0.0000	0.0000	1	0.0000
8.090	4.0100	0.0000	28	

TOTAL AREA: 0.0000

* CALIB 1 @
ISTD
REF 2 RTU: 5.100 NON-REF 2 RTU: 5.100

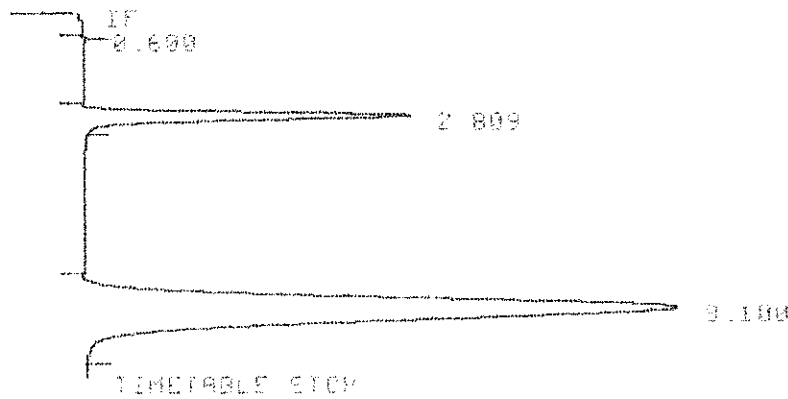
LEVEL: 1 RECALIBRATIONS: 7

CAL#	RT	CU	AMT	AMT/AREA
1	2.800	1	1.0004E+02	1.7579E-04
20	8.800	1	4.0100E+01	1.8410E-05

CAL# NAME
 1 ETHANOL
 2 N-PROPANOL

CALIBRATION OPTIONS
 RF of uncalibrated peaks ... 0.0000E+00
 Calibration fit ... P
 Disable post-run RI update ... NO
 ISTD peak # ... 2
 ISTD AMT ... 4.0100E+01
 SAMPLE AMT ... 0.0000E+00
 MUL FACTOR ... 1.0000E+00

* RUN # 5825 JUL 14, 2015 08:40:57
START



RUN# 5825 JUL 14, 2015 08:40:57

METHOD NAME: (MACHINE TCI)

CAL 58

ISTD-AREA

RT	AREA	TYPE	CAL#	MS-100
2.800	100040	FB	1	100.000
8.100	2994174	FB	20	

TOTAL AREA=3094214
 MUL FACTOR=1.0000E+00
 ISTD AMT=4.0100E+01

* CALIB 1 0
1510
REF A RTN: 5.000 NON-REF 2 RTN: 5.000

LEVEL: 1 RECALIBRATIONS: 8

CHL#	RT	LU	AMT	RTN/NSCH
1	2.000	1	1.0000E+00	1.7505E-09
28	8.000	1	4.0100E+01	1.3000E-09

CALC NAME
1 ETHANOL
2 n-PROPANOL

CALIBRATION OPTIONS
RF of uncalibrated peaks ... 0.0000E+00
Calibration fit ... F
Disable post-run RT update ... NO
1ST peak # ... 2
1ST RT ... 4.0100E+01
SAMPLE AMT ... 0.0000E+00
DIL FACTOR ... 1.0000E+00

*

* EDIT METH

- 1 * RUN PARAMETERS
- 2 * TIMETABLE EVENTS
- 3 * REPLACE CALIBRATION
- 4 * INTEGRATION PLOT TYPE
- 5 * PLOT DATA STORAGE OPTIONS
- 6 * REPORT OPTIONS
- 7 * PRINT & POST-RUN LIST OPTIONS
- 8 * REMOVE DEVICE ACCESS
- 9 * RANGE SETPOINTS

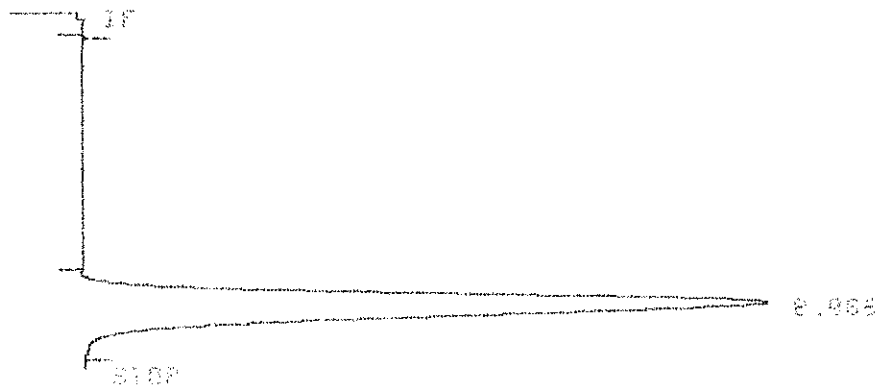
SECTION TO BE EDITED: 6 @

REPORT OPTIONS

Suppress local report (Y/N*):
HEIGHTX report (Y/N*):
Replace report title (Y/N*): Y
Report title: ISTD BLANK
Replace amount label (Y/N*):
Report uncalibrated peaks (Y/N*):
Extended report (Y/N*):

SECTION TO BE EDITED:

* RUN # 5817 JUL 14, 2015 07:01:21
START



RUN# 5817 JUL 14, 2015 07:01:21

METHOD NAME: M000001.MET

ISTD BLANK

ISTD AREA

RT	AREA	TYPE	CHL	MS/100
0.000	14.710	PK	26	

TOTAL OPERATIONS
ALL FALLOFF=1.0000E+00
ISTD AREA=14.710000

* EDIT METH

- 1 = RUN PARAMETERS
- 2 = TIMETABLE EVENTS
- 3 = REPLACE CALIBRATION
- 4 = INTEGRATION PLOT TYPE
- 5 = RUN DATA STORAGE OPTIONS
- 6 = REPORT OPTIONS
- 7 = PRINT & POST-RUN LIST OPTIONS
- 8 = REMOTE DEVICE ACCESS
- 9 = RANGE SETPOINTS

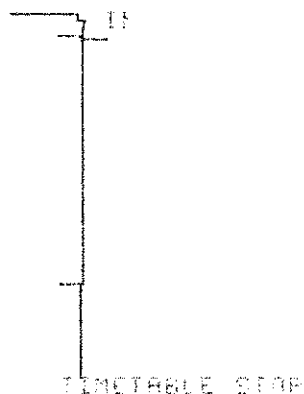
SECTION TO BE EDITED: 6 @

REPORT OPTIONS

Suppress local report (Y/N*3):
HEIGHTX report (Y*Y/N3):
Replace report title (Y/N*3): Y
Report title: LOT 201507A WATER BLANK
Replace amount label (Y/N*1):
Report uncalibrated peaks (Y/N*3):
Extended report (Y/N*3):

SECTION TO BE EDITED:

* RUN # 5814 JUL 14, 2015 06:26:54
START



RUN# 5814 JUL 14, 2015 06:26:54

METHOD NAME: M*QUANT MET

LOT 201507A WATER BLANK

NO RUN PEAKS STORED

*

** LOOP DOWN: TIMEOUT **

Configuring, Wait for "LOOP UP" message

*****+*+*+* LOOP UP +*+*+*+*****

* LIST: METH @

RUN PARAMETERS

ZERO = 0
ATT 21 = 4
CHT SP = 0.5
RR REJ = 100
TRPSH = 3
PK UB = 0.20

TIMETABLE EVENTS

0.000 INTO # = 0
0.000 INTO # = 0
10.000 STOP

CALIBRATION

ISIC
REF X PTU: 5.000 NON-REF X RTU: 5.000

LEVEL: 1 RECALIBRATIONS: 0

CALL#	RT	LU	AMT	AMT/AREA
1	2.000	1	1.00040E+02	1.7238E-04
2a	0.078	1	4.0100E+01	1.2409E-05

CALL# NAME
1 ETHANOL
2 N-PROPANOL

INTEGRATION PLOT TYPE: YLIERED
Presentation plot: NO

RUN DATA STORAGE
Store signal data: NO
Store processed peaks: NO

CALIBRATION OPTIONS
of uncalibrated peaks: 0 0000E+00
Calibration fit: F
Disable post-run RI update: NO
Iaid peak #: 2
Iaid AMT: 0.0100E+01
SAMPLE AMT: 0.0000E+00

REPORT OPTIONS

Suppress label report NO
HEIGHT% report YES
Report title:
IBID 53
Amount label 05:100
Report uncalibrated peaks NO
Extended report NO

PRINT & POST-RUN LIST OPTIONS

Large font YES
Store post-run report NO
External post-run report NO
List run parameters NO
List timetable NO
List calibration table NO
List rename method NO
Form-feed before report NO
Form-feed after report NO
Skip perforations in report NO
Skip perforations in plot NO
RANGE: 01.BUFFER 5, 5

HP 5890A GAS CHROMATOGRAPH

LOOP ADDRESS: 8

GUEN TEMP = 110 SETPT = 110
EQUIB TIME = 0.00 CRYO OFF
GUEN MAXIMUM = 175
INITIAL TEMP = 110
INITIAL TIME = 0.00

RUN LENGTH = 650.00 MIN

INJ A TEMP = 200 SETPT = 200
DET A TEMP = 250 SETPT = 250

SIGNAL 1 = A
INEL FULL RANGE DATA ON
RANGE = 3
ZERO = 10.0
ATTN = 3

SIGNAL 2 = A
RANGE = 3
ZERO = 10.0
ATTN = 3

DETECTOR A = FID (ON)

PURGE A = ON
PURGE B = OFF

* STORE CALIB CURS @
OVERWRITE EXISTING FILE (Y/N): Y

*
*