

2025 Cycle 1 Blood Proficiency Test Results Summary

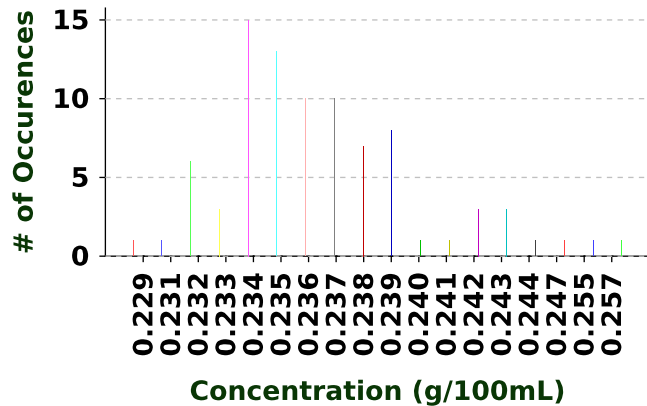
Statistics - First Iteration

Level	N	Mean	Std Dev (SD)	Mean - 3 (SD)	Mean + 3 (SD)
A	88	0.237	0.004	0.225	0.249
B	90	0.146	0.002	0.140	0.152
C	88	0.042	0.001	0.039	0.045
D	88	0.203	0.003	0.194	0.212
E	86	0.074	0.002	0.068	0.080

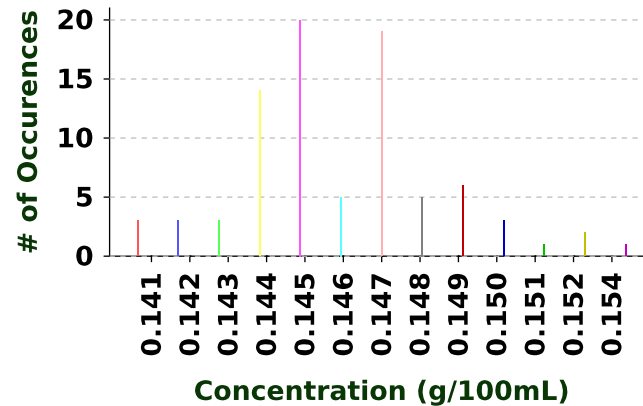
Statistics - Second Iteration

Level	N	Mean	Std Dev (SD)	Mean - 3 (SD)	Mean + 3 (SD)
A	86	0.236	0.003	0.227	0.245
B	88	0.146	0.002	0.140	0.152
C	86	0.042	0.001	0.039	0.045
D	86	0.203	0.003	0.194	0.212
E	86	0.074	0.002	0.068	0.080

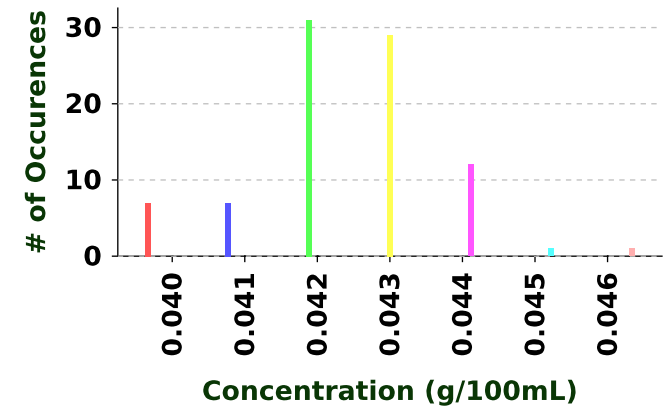
Level A



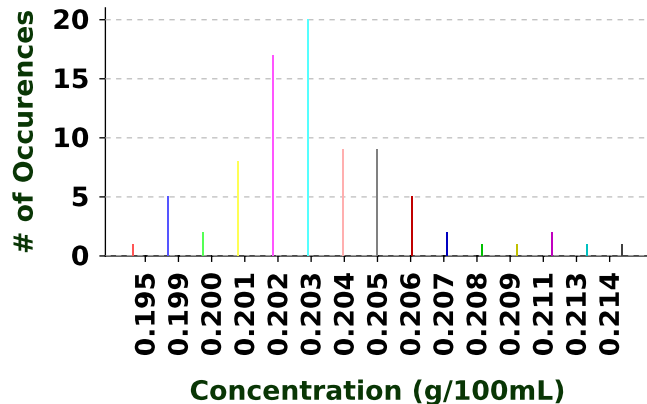
Level B



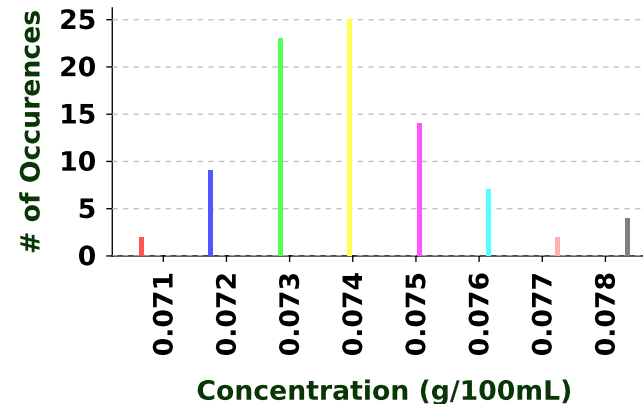
Level C



Level D



Level E



Florida Department of Law Enforcement

Alcohol Testing Program

BLOOD ALCOHOL PROFICIENCY INITIAL TEST OUTCOME REPORT

Proficiency Cycle: 25C1

Receive Results By: 04/23/2025

Method: GC

Analyst Name: Anderson, Carla

Your 25C1 Proficiency test outcome is: Unsatisfactory

Evaluation Procedure:

First Iteration: For each level, the qualified results reported by participating analysts and reference labs are pooled, the mean, standard deviation and acceptable range are calculated using truncation, and results outside the acceptable range are excluded from the second iteration.

Second iteration: The mean, standard deviation and acceptable range are recalculated using truncation, every analyst's qualified results are compared to the recalculated acceptable range, and every analyst is assigned an outcome for the proficiency cycle. All analysts with Results Outside Acceptable Range receive retest samples. The retest results are compared to the acceptable range established by the initial test and the retested analyst's outcome for the proficiency cycle is assigned based on the second comparison.

Test Type	Vial Level	Vial Number	Results #1 Reported	#1 Z Score	Results #2 Reported	#2 Z Score
I	A	1110	0.232	-1.250	0.231	-1.500
I	B	1201	0.154	4.000	0.152	3.000

Proficiency Cycle Statistics

Level	Lower Limit	Upper Limit	Mean (Avg)	Std Dev	N	Number Out Of Range	
						1st Iteration	2nd Iteration
A	0.227	0.245	0.236	0.003	86	1	1
B	0.140	0.152	0.146	0.002	88	1	0
C	0.039	0.045	0.042	0.001	86	1	0
D	0.194	0.212	0.203	0.003	86	1	0
E	0.068	0.080	0.074	0.002	86	0	0

Notes: Z Score is your reported analytical result compared to the mean in terms of the standard deviation, calculated as (Result-Mean)/StddDev. The Parameter n is the number of results reported which are used to calculate the second iteration mean and standard deviation.

Florida Department of Law Enforcement

Alcohol Testing Program

BLOOD ALCOHOL PROFICIENCY INITIAL TEST OUTCOME REPORT

Proficiency Cycle: 25C1

Receive Results By: 04/30/2025

Method: GC

Analyst Name: Andrychowski, Christopher

Your 25C1 Proficiency test outcome is: Satisfactory

Evaluation Procedure:

First Iteration: For each level, the qualified results reported by participating analysts and reference labs are pooled, the mean, standard deviation and acceptable range are calculated using truncation, and results outside the acceptable range are excluded from the second iteration.

Second iteration: The mean, standard deviation and acceptable range are recalculated using truncation, every analyst's qualified results are compared to the recalculated acceptable range, and every analyst is assigned an outcome for the proficiency cycle. All analysts with Results Outside Acceptable Range receive retest samples. The retest results are compared to the acceptable range established by the initial test and the retested analyst's outcome for the proficiency cycle is assigned based on the second comparison.

Test Type	Vial Level	Vial Number	Results #1 Reported	#1 Z Score	Results #2 Reported	#2 Z Score
I	A	1140	0.235	-0.333	0.240	1.333
I	B	1240	0.144	-1.000	0.144	-1.000
I	C	1339	0.043	1.000	0.042	0.000
I	D	1439	0.202	-0.333	0.202	-0.333
I	E	1539	0.074	0.000	0.073	-0.500

Proficiency Cycle Statistics

Level	Lower Limit	Upper Limit	Mean (Avg)	Std Dev	N	Number Out Of Range	
						1st Iteration	2nd Iteration
A	0.227	0.245	0.236	0.003	86	1	1
B	0.140	0.152	0.146	0.002	88	1	0
C	0.039	0.045	0.042	0.001	86	1	0
D	0.194	0.212	0.203	0.003	86	1	0
E	0.068	0.080	0.074	0.002	86	0	0

Notes: Z Score is your reported analytical result compared to the mean in terms of the standard deviation, calculated as (Result-Mean)/StddDev. The Parameter n is the number of results reported which are used to calculate the second iteration mean and standard deviation.

Florida Department of Law Enforcement

Alcohol Testing Program

BLOOD ALCOHOL PROFICIENCY INITIAL TEST OUTCOME REPORT

Proficiency Cycle: 25C1

Receive Results By: 04/18/2025

Method: GC

Analyst Name: Arnold, Gabrielle

Your 25C1 Proficiency test outcome is: Satisfactory

Evaluation Procedure:

First Iteration: For each level, the qualified results reported by participating analysts and reference labs are pooled, the mean, standard deviation and acceptable range are calculated using truncation, and results outside the acceptable range are excluded from the second iteration.

Second iteration: The mean, standard deviation and acceptable range are recalculated using truncation, every analyst's qualified results are compared to the recalculated acceptable range, and every analyst is assigned an outcome for the proficiency cycle. All analysts with Results Outside Acceptable Range receive retest samples. The retest results are compared to the acceptable range established by the initial test and the retested analyst's outcome for the proficiency cycle is assigned based on the second comparison.

Test Type	Vial Level	Vial Number	Results #1 Reported	#1 Z Score	Results #2 Reported	#2 Z Score
I	C	1310	0.042	0.000	0.041	-1.000
I	D	1401	0.206	1.000	0.208	1.667

Proficiency Cycle Statistics

Level	Lower Limit	Upper Limit	Mean (Avg)	Std Dev	N	Number Out Of Range	
						1st Iteration	2nd Iteration
A	0.227	0.245	0.236	0.003	86	1	1
B	0.140	0.152	0.146	0.002	88	1	0
C	0.039	0.045	0.042	0.001	86	1	0
D	0.194	0.212	0.203	0.003	86	1	0
E	0.068	0.080	0.074	0.002	86	0	0

Notes: Z Score is your reported analytical result compared to the mean in terms of the standard deviation, calculated as (Result-Mean)/StddDev. The Parameter n is the number of results reported which are used to calculate the second iteration mean and standard deviation.

Florida Department of Law Enforcement

Alcohol Testing Program

BLOOD ALCOHOL PROFICIENCY INITIAL TEST OUTCOME REPORT

Proficiency Cycle: 25C1

Receive Results By: 04/23/2025

Method: GC

Analyst Name: Baldwin, Jacquelyn

Your 25C1 Proficiency test outcome is: Satisfactory

Evaluation Procedure:

First Iteration: For each level, the qualified results reported by participating analysts and reference labs are pooled, the mean, standard deviation and acceptable range are calculated using truncation, and results outside the acceptable range are excluded from the second iteration.

Second iteration: The mean, standard deviation and acceptable range are recalculated using truncation, every analyst's qualified results are compared to the recalculated acceptable range, and every analyst is assigned an outcome for the proficiency cycle. All analysts with Results Outside Acceptable Range receive retest samples. The retest results are compared to the acceptable range established by the initial test and the retested analyst's outcome for the proficiency cycle is assigned based on the second comparison.

Test Type	Vial Level	Vial Number	Results #1 Reported	#1 Z Score	Results #2 Reported	#2 Z Score
I	A	1109	0.234	-0.667	0.238	0.667
I	E	1501	0.077	1.500	0.075	0.500

Proficiency Cycle Statistics

Level	Lower Limit	Upper Limit	Mean (Avg)	Std Dev	N	Number Out Of Range	
						1st Iteration	2nd Iteration
A	0.227	0.245	0.236	0.003	86	1	1
B	0.140	0.152	0.146	0.002	88	1	0
C	0.039	0.045	0.042	0.001	86	1	0
D	0.194	0.212	0.203	0.003	86	1	0
E	0.068	0.080	0.074	0.002	86	0	0

Notes: Z Score is your reported analytical result compared to the mean in terms of the standard deviation, calculated as (Result-Mean)/StddDev. The Parameter n is the number of results reported which are used to calculate the second iteration mean and standard deviation.

Florida Department of Law Enforcement

Alcohol Testing Program

BLOOD ALCOHOL PROFICIENCY INITIAL TEST OUTCOME REPORT

Proficiency Cycle: 25C1

Receive Results By: 04/23/2025

Method: GC

Analyst Name: Barbe, Stephanie

Your 25C1 Proficiency test outcome is: Unsatisfactory

Evaluation Procedure:

First Iteration: For each level, the qualified results reported by participating analysts and reference labs are pooled, the mean, standard deviation and acceptable range are calculated using truncation, and results outside the acceptable range are excluded from the second iteration.

Second iteration: The mean, standard deviation and acceptable range are recalculated using truncation, every analyst's qualified results are compared to the recalculated acceptable range, and every analyst is assigned an outcome for the proficiency cycle. All analysts with Results Outside Acceptable Range receive retest samples. The retest results are compared to the acceptable range established by the initial test and the retested analyst's outcome for the proficiency cycle is assigned based on the second comparison.

Test Type	Vial Level	Vial Number	Results #1 Reported	#1 Z Score	Results #2 Reported	#2 Z Score
I	B	1202	0.150	2.000	0.152	3.000
I	C	1309	0.044	2.000	0.046	4.000

Proficiency Cycle Statistics

Level	Lower Limit	Upper Limit	Mean (Avg)	Std Dev	N	Number Out Of Range	
						1st Iteration	2nd Iteration
A	0.227	0.245	0.236	0.003	86	1	1
B	0.140	0.152	0.146	0.002	88	1	0
C	0.039	0.045	0.042	0.001	86	1	0
D	0.194	0.212	0.203	0.003	86	1	0
E	0.068	0.080	0.074	0.002	86	0	0

Notes: Z Score is your reported analytical result compared to the mean in terms of the standard deviation, calculated as (Result-Mean)/StddDev. The Parameter n is the number of results reported which are used to calculate the second iteration mean and standard deviation.

Florida Department of Law Enforcement

Alcohol Testing Program

BLOOD ALCOHOL PROFICIENCY INITIAL TEST OUTCOME REPORT

Proficiency Cycle: 25C1

Receive Results By: 04/30/2025

Method: GC

Analyst Name: Belinsky, Melanie

Your 25C1 Proficiency test outcome is: Satisfactory

Evaluation Procedure:

First Iteration: For each level, the qualified results reported by participating analysts and reference labs are pooled, the mean, standard deviation and acceptable range are calculated using truncation, and results outside the acceptable range are excluded from the second iteration.

Second iteration: The mean, standard deviation and acceptable range are recalculated using truncation, every analyst's qualified results are compared to the recalculated acceptable range, and every analyst is assigned an outcome for the proficiency cycle. All analysts with Results Outside Acceptable Range receive retest samples. The retest results are compared to the acceptable range established by the initial test and the retested analyst's outcome for the proficiency cycle is assigned based on the second comparison.

Test Type	Vial Level	Vial Number	Results #1 Reported	#1 Z Score	Results #2 Reported	#2 Z Score
I	D	1410	0.202	-0.333	0.200	-1.000
I	E	1502	0.074	0.000	0.073	-0.500

Proficiency Cycle Statistics

Level	Lower Limit	Upper Limit	Mean (Avg)	Std Dev	N	Number Out Of Range	
						1st Iteration	2nd Iteration
A	0.227	0.245	0.236	0.003	86	1	1
B	0.140	0.152	0.146	0.002	88	1	0
C	0.039	0.045	0.042	0.001	86	1	0
D	0.194	0.212	0.203	0.003	86	1	0
E	0.068	0.080	0.074	0.002	86	0	0

Notes: Z Score is your reported analytical result compared to the mean in terms of the standard deviation, calculated as (Result-Mean)/StddDev. The Parameter n is the number of results reported which are used to calculate the second iteration mean and standard deviation.

Florida Department of Law Enforcement

Alcohol Testing Program

BLOOD ALCOHOL PROFICIENCY INITIAL TEST OUTCOME REPORT

Proficiency Cycle: 25C1

Receive Results By: 05/07/2025

Method: GC

Analyst Name: Bridges, Anneli

Your 25C1 Proficiency test outcome is: Satisfactory

Evaluation Procedure:

First Iteration: For each level, the qualified results reported by participating analysts and reference labs are pooled, the mean, standard deviation and acceptable range are calculated using truncation, and results outside the acceptable range are excluded from the second iteration.

Second iteration: The mean, standard deviation and acceptable range are recalculated using truncation, every analyst's qualified results are compared to the recalculated acceptable range, and every analyst is assigned an outcome for the proficiency cycle. All analysts with Results Outside Acceptable Range receive retest samples. The retest results are compared to the acceptable range established by the initial test and the retested analyst's outcome for the proficiency cycle is assigned based on the second comparison.

Test Type	Vial Level	Vial Number	Results #1 Reported	#1 Z Score	Results #2 Reported	#2 Z Score
I	A	1108	0.239	1.000	0.236	0.000
I	B	1203	0.144	-1.000	0.143	-1.500

Proficiency Cycle Statistics

Level	Lower Limit	Upper Limit	Mean (Avg)	Std Dev	N	Number Out Of Range	
						1st Iteration	2nd Iteration
A	0.227	0.245	0.236	0.003	86	1	1
B	0.140	0.152	0.146	0.002	88	1	0
C	0.039	0.045	0.042	0.001	86	1	0
D	0.194	0.212	0.203	0.003	86	1	0
E	0.068	0.080	0.074	0.002	86	0	0

Notes: Z Score is your reported analytical result compared to the mean in terms of the standard deviation, calculated as (Result-Mean)/StddDev. The Parameter n is the number of results reported which are used to calculate the second iteration mean and standard deviation.

Florida Department of Law Enforcement

Alcohol Testing Program

BLOOD ALCOHOL PROFICIENCY INITIAL TEST OUTCOME REPORT

Proficiency Cycle: 25C1

Receive Results By: 05/02/2025

Method: GC

Analyst Name: Bugden, Kelly

Your 25C1 Proficiency test outcome is: Satisfactory

Evaluation Procedure:

First Iteration: For each level, the qualified results reported by participating analysts and reference labs are pooled, the mean, standard deviation and acceptable range are calculated using truncation, and results outside the acceptable range are excluded from the second iteration.

Second iteration: The mean, standard deviation and acceptable range are recalculated using truncation, every analyst's qualified results are compared to the recalculated acceptable range, and every analyst is assigned an outcome for the proficiency cycle. All analysts with Results Outside Acceptable Range receive retest samples. The retest results are compared to the acceptable range established by the initial test and the retested analyst's outcome for the proficiency cycle is assigned based on the second comparison.

Test Type	Vial Level	Vial Number	Results #1 Reported	#1 Z Score	Results #2 Reported	#2 Z Score
I	C	1320	0.042	0.000	0.042	0.000
I	D	1402	0.203	0.000	0.204	0.333

Proficiency Cycle Statistics

Level	Lower Limit	Upper Limit	Mean (Avg)	Std Dev	N	Number Out Of Range	
						1st Iteration	2nd Iteration
A	0.227	0.245	0.236	0.003	86	1	1
B	0.140	0.152	0.146	0.002	88	1	0
C	0.039	0.045	0.042	0.001	86	1	0
D	0.194	0.212	0.203	0.003	86	1	0
E	0.068	0.080	0.074	0.002	86	0	0

Notes: Z Score is your reported analytical result compared to the mean in terms of the standard deviation, calculated as (Result-Mean)/StddDev. The Parameter n is the number of results reported which are used to calculate the second iteration mean and standard deviation.

Florida Department of Law Enforcement

Alcohol Testing Program

BLOOD ALCOHOL PROFICIENCY INITIAL TEST OUTCOME REPORT

Proficiency Cycle: 25C1

Receive Results By: 05/02/2025

Method: GC

Analyst Name: Bugden, Kelly

Your 25C1 Proficiency test outcome is: Satisfactory

Evaluation Procedure:

First Iteration: For each level, the qualified results reported by participating analysts and reference labs are pooled, the mean, standard deviation and acceptable range are calculated using truncation, and results outside the acceptable range are excluded from the second iteration.

Second iteration: The mean, standard deviation and acceptable range are recalculated using truncation, every analyst's qualified results are compared to the recalculated acceptable range, and every analyst is assigned an outcome for the proficiency cycle. All analysts with Results Outside Acceptable Range receive retest samples. The retest results are compared to the acceptable range established by the initial test and the retested analyst's outcome for the proficiency cycle is assigned based on the second comparison.

Test Type	Vial Level	Vial Number	Results #1 Reported	#1 Z Score	Results #2 Reported	#2 Z Score
I	A	1107	0.235	-0.333	0.236	0.000
I	E	1503	0.073	-0.500	0.073	-0.500

Proficiency Cycle Statistics

Level	Lower Limit	Upper Limit	Mean (Avg)	Std Dev	N	Number Out Of Range	
						1st Iteration	2nd Iteration
A	0.227	0.245	0.236	0.003	86	1	1
B	0.140	0.152	0.146	0.002	88	1	0
C	0.039	0.045	0.042	0.001	86	1	0
D	0.194	0.212	0.203	0.003	86	1	0
E	0.068	0.080	0.074	0.002	86	0	0

Notes: Z Score is your reported analytical result compared to the mean in terms of the standard deviation, calculated as (Result-Mean)/StddDev. The Parameter n is the number of results reported which are used to calculate the second iteration mean and standard deviation.

Florida Department of Law Enforcement

Alcohol Testing Program

BLOOD ALCOHOL PROFICIENCY INITIAL TEST OUTCOME REPORT

Proficiency Cycle: 25C1

Receive Results By: 04/24/2025

Method: GC

Analyst Name: Carswell, Katheryn

Your 25C1 Proficiency test outcome is: Satisfactory

Evaluation Procedure:

First Iteration: For each level, the qualified results reported by participating analysts and reference labs are pooled, the mean, standard deviation and acceptable range are calculated using truncation, and results outside the acceptable range are excluded from the second iteration.

Second iteration: The mean, standard deviation and acceptable range are recalculated using truncation, every analyst's qualified results are compared to the recalculated acceptable range, and every analyst is assigned an outcome for the proficiency cycle. All analysts with Results Outside Acceptable Range receive retest samples. The retest results are compared to the acceptable range established by the initial test and the retested analyst's outcome for the proficiency cycle is assigned based on the second comparison.

Test Type	Vial Level	Vial Number	Results #1 Reported	#1 Z Score	Results #2 Reported	#2 Z Score
I	B	1204	0.147	0.500	0.150	2.000
I	C	1308	0.042	0.000	0.043	1.000

Proficiency Cycle Statistics

Level	Lower Limit	Upper Limit	Mean (Avg)	Std Dev	N	Number Out Of Range	
						1st Iteration	2nd Iteration
A	0.227	0.245	0.236	0.003	86	1	1
B	0.140	0.152	0.146	0.002	88	1	0
C	0.039	0.045	0.042	0.001	86	1	0
D	0.194	0.212	0.203	0.003	86	1	0
E	0.068	0.080	0.074	0.002	86	0	0

Notes: Z Score is your reported analytical result compared to the mean in terms of the standard deviation, calculated as (Result-Mean)/StddDev. The Parameter n is the number of results reported which are used to calculate the second iteration mean and standard deviation.

Florida Department of Law Enforcement

Alcohol Testing Program

BLOOD ALCOHOL PROFICIENCY INITIAL TEST OUTCOME REPORT

Proficiency Cycle: 25C1

Receive Results By: 04/28/2025

Method: GC

Analyst Name: Catlin, Tara

Your 25C1 Proficiency test outcome is: Satisfactory

Evaluation Procedure:

First Iteration: For each level, the qualified results reported by participating analysts and reference labs are pooled, the mean, standard deviation and acceptable range are calculated using truncation, and results outside the acceptable range are excluded from the second iteration.

Second iteration: The mean, standard deviation and acceptable range are recalculated using truncation, every analyst's qualified results are compared to the recalculated acceptable range, and every analyst is assigned an outcome for the proficiency cycle. All analysts with Results Outside Acceptable Range receive retest samples. The retest results are compared to the acceptable range established by the initial test and the retested analyst's outcome for the proficiency cycle is assigned based on the second comparison.

Test Type	Vial Level	Vial Number	Results #1 Reported	#1 Z Score	Results #2 Reported	#2 Z Score
I	D	1405	0.203	0.000	0.202	-0.333
I	E	1504	0.074	0.000	0.074	0.000

Proficiency Cycle Statistics

Level	Lower Limit	Upper Limit	Mean (Avg)	Std Dev	N	Number Out Of Range	
						1st Iteration	2nd Iteration
A	0.227	0.245	0.236	0.003	86	1	1
B	0.140	0.152	0.146	0.002	88	1	0
C	0.039	0.045	0.042	0.001	86	1	0
D	0.194	0.212	0.203	0.003	86	1	0
E	0.068	0.080	0.074	0.002	86	0	0

Notes: Z Score is your reported analytical result compared to the mean in terms of the standard deviation, calculated as (Result-Mean)/StddDev. The Parameter n is the number of results reported which are used to calculate the second iteration mean and standard deviation.

Florida Department of Law Enforcement

Alcohol Testing Program

BLOOD ALCOHOL PROFICIENCY INITIAL TEST OUTCOME REPORT

Proficiency Cycle: 25C1

Receive Results By: 04/23/2025

Method: GC

Analyst Name: Chin, Jenna

Your 25C1 Proficiency test outcome is: Satisfactory

Evaluation Procedure:

First Iteration: For each level, the qualified results reported by participating analysts and reference labs are pooled, the mean, standard deviation and acceptable range are calculated using truncation, and results outside the acceptable range are excluded from the second iteration.

Second iteration: The mean, standard deviation and acceptable range are recalculated using truncation, every analyst's qualified results are compared to the recalculated acceptable range, and every analyst is assigned an outcome for the proficiency cycle. All analysts with Results Outside Acceptable Range receive retest samples. The retest results are compared to the acceptable range established by the initial test and the retested analyst's outcome for the proficiency cycle is assigned based on the second comparison.

Test Type	Vial Level	Vial Number	Results #1 Reported	#1 Z Score	Results #2 Reported	#2 Z Score
I	A	1106	0.239	1.000	0.239	1.000
I	B	1205	0.147	0.500	0.147	0.500

Proficiency Cycle Statistics

Level	Lower Limit	Upper Limit	Mean (Avg)	Std Dev	N	Number Out Of Range	
						1st Iteration	2nd Iteration
A	0.227	0.245	0.236	0.003	86	1	1
B	0.140	0.152	0.146	0.002	88	1	0
C	0.039	0.045	0.042	0.001	86	1	0
D	0.194	0.212	0.203	0.003	86	1	0
E	0.068	0.080	0.074	0.002	86	0	0

Notes: Z Score is your reported analytical result compared to the mean in terms of the standard deviation, calculated as (Result-Mean)/StddDev. The Parameter n is the number of results reported which are used to calculate the second iteration mean and standard deviation.

Florida Department of Law Enforcement

Alcohol Testing Program

BLOOD ALCOHOL PROFICIENCY INITIAL TEST OUTCOME REPORT

Proficiency Cycle: 25C1

Receive Results By: 04/25/2025

Method: GC

Analyst Name: Digman, Zachary

Your 25C1 Proficiency test outcome is: Satisfactory

Evaluation Procedure:

First Iteration: For each level, the qualified results reported by participating analysts and reference labs are pooled, the mean, standard deviation and acceptable range are calculated using truncation, and results outside the acceptable range are excluded from the second iteration.

Second iteration: The mean, standard deviation and acceptable range are recalculated using truncation, every analyst's qualified results are compared to the recalculated acceptable range, and every analyst is assigned an outcome for the proficiency cycle. All analysts with Results Outside Acceptable Range receive retest samples. The retest results are compared to the acceptable range established by the initial test and the retested analyst's outcome for the proficiency cycle is assigned based on the second comparison.

Test Type	Vial Level	Vial Number	Results #1 Reported	#1 Z Score	Results #2 Reported	#2 Z Score
I	C	1307	0.042	0.000	0.042	0.000
I	D	1403	0.200	-1.000	0.203	0.000

Proficiency Cycle Statistics

Level	Lower Limit	Upper Limit	Mean (Avg)	Std Dev	N	Number Out Of Range	
						1st Iteration	2nd Iteration
A	0.227	0.245	0.236	0.003	86	1	1
B	0.140	0.152	0.146	0.002	88	1	0
C	0.039	0.045	0.042	0.001	86	1	0
D	0.194	0.212	0.203	0.003	86	1	0
E	0.068	0.080	0.074	0.002	86	0	0

Notes: Z Score is your reported analytical result compared to the mean in terms of the standard deviation, calculated as (Result-Mean)/StddDev. The Parameter n is the number of results reported which are used to calculate the second iteration mean and standard deviation.

Florida Department of Law Enforcement

Alcohol Testing Program

BLOOD ALCOHOL PROFICIENCY INITIAL TEST OUTCOME REPORT

Proficiency Cycle: 25C1

Receive Results By: 04/22/2025

Method: GC

Analyst Name: Finkelstein, Marissa

Your 25C1 Proficiency test outcome is: Satisfactory

Evaluation Procedure:

First Iteration: For each level, the qualified results reported by participating analysts and reference labs are pooled, the mean, standard deviation and acceptable range are calculated using truncation, and results outside the acceptable range are excluded from the second iteration.

Second iteration: The mean, standard deviation and acceptable range are recalculated using truncation, every analyst's qualified results are compared to the recalculated acceptable range, and every analyst is assigned an outcome for the proficiency cycle. All analysts with Results Outside Acceptable Range receive retest samples. The retest results are compared to the acceptable range established by the initial test and the retested analyst's outcome for the proficiency cycle is assigned based on the second comparison.

Test Type	Vial Level	Vial Number	Results #1 Reported	#1 Z Score	Results #2 Reported	#2 Z Score
I	B	1206	0.144	-1.000	0.146	0.000
I	C	1306	0.044	2.000	0.043	1.000

Proficiency Cycle Statistics

Level	Lower Limit	Upper Limit	Mean (Avg)	Std Dev	N	Number Out Of Range	
						1st Iteration	2nd Iteration
A	0.227	0.245	0.236	0.003	86	1	1
B	0.140	0.152	0.146	0.002	88	1	0
C	0.039	0.045	0.042	0.001	86	1	0
D	0.194	0.212	0.203	0.003	86	1	0
E	0.068	0.080	0.074	0.002	86	0	0

Notes: Z Score is your reported analytical result compared to the mean in terms of the standard deviation, calculated as (Result-Mean)/StddDev. The Parameter n is the number of results reported which are used to calculate the second iteration mean and standard deviation.

Florida Department of Law Enforcement

Alcohol Testing Program

BLOOD ALCOHOL PROFICIENCY INITIAL TEST OUTCOME REPORT

Proficiency Cycle: 25C1

Receive Results By: 04/25/2025

Method: GC

Analyst Name: Ford, Timaria

Your 25C1 Proficiency test outcome is: Satisfactory

Evaluation Procedure:

First Iteration: For each level, the qualified results reported by participating analysts and reference labs are pooled, the mean, standard deviation and acceptable range are calculated using truncation, and results outside the acceptable range are excluded from the second iteration.

Second iteration: The mean, standard deviation and acceptable range are recalculated using truncation, every analyst's qualified results are compared to the recalculated acceptable range, and every analyst is assigned an outcome for the proficiency cycle. All analysts with Results Outside Acceptable Range receive retest samples. The retest results are compared to the acceptable range established by the initial test and the retested analyst's outcome for the proficiency cycle is assigned based on the second comparison.

Test Type	Vial Level	Vial Number	Results #1 Reported	#1 Z Score	Results #2 Reported	#2 Z Score
I	A	1134	0.238	0.667	0.238	0.667
I	B	1234	0.147	0.500	0.147	0.500
I	C	1333	0.044	2.000	0.044	2.000
I	D	1433	0.205	0.667	0.206	1.000
I	E	1533	0.076	1.000	0.075	0.500

Proficiency Cycle Statistics

Level	Lower Limit	Upper Limit	Mean (Avg)	Std Dev	N	Number Out Of Range	
						1st Iteration	2nd Iteration
A	0.227	0.245	0.236	0.003	86	1	1
B	0.140	0.152	0.146	0.002	88	1	0
C	0.039	0.045	0.042	0.001	86	1	0
D	0.194	0.212	0.203	0.003	86	1	0
E	0.068	0.080	0.074	0.002	86	0	0

Notes: Z Score is your reported analytical result compared to the mean in terms of the standard deviation, calculated as (Result-Mean)/StddDev. The Parameter n is the number of results reported which are used to calculate the second iteration mean and standard deviation.

Florida Department of Law Enforcement

Alcohol Testing Program

BLOOD ALCOHOL PROFICIENCY INITIAL TEST OUTCOME REPORT

Proficiency Cycle: 25C1

Receive Results By: 04/23/2025

Method: GC

Analyst Name: Ford, Timaria

Your 25C1 Proficiency test outcome is: Satisfactory

Evaluation Procedure:

First Iteration: For each level, the qualified results reported by participating analysts and reference labs are pooled, the mean, standard deviation and acceptable range are calculated using truncation, and results outside the acceptable range are excluded from the second iteration.

Second iteration: The mean, standard deviation and acceptable range are recalculated using truncation, every analyst's qualified results are compared to the recalculated acceptable range, and every analyst is assigned an outcome for the proficiency cycle. All analysts with Results Outside Acceptable Range receive retest samples. The retest results are compared to the acceptable range established by the initial test and the retested analyst's outcome for the proficiency cycle is assigned based on the second comparison.

Test Type	Vial Level	Vial Number	Results #1 Reported	#1 Z Score	Results #2 Reported	#2 Z Score
I	A	1135	0.239	1.000	0.234	-0.667
I	B	1235	0.146	0.000	0.147	0.500
I	C	1334	0.043	1.000	0.043	1.000
I	D	1434	0.205	0.667	0.202	-0.333
I	E	1534	0.075	0.500	0.075	0.500

Proficiency Cycle Statistics

Level	Lower Limit	Upper Limit	Mean (Avg)	Std Dev	N	Number Out Of Range	
						1st Iteration	2nd Iteration
A	0.227	0.245	0.236	0.003	86	1	1
B	0.140	0.152	0.146	0.002	88	1	0
C	0.039	0.045	0.042	0.001	86	1	0
D	0.194	0.212	0.203	0.003	86	1	0
E	0.068	0.080	0.074	0.002	86	0	0

Notes: Z Score is your reported analytical result compared to the mean in terms of the standard deviation, calculated as (Result-Mean)/StddDev. The Parameter n is the number of results reported which are used to calculate the second iteration mean and standard deviation.

Florida Department of Law Enforcement

Alcohol Testing Program

BLOOD ALCOHOL PROFICIENCY INITIAL TEST OUTCOME REPORT

Proficiency Cycle: 25C1

Receive Results By: 04/22/2025

Method: GC

Analyst Name: Garcia, Jose

Your 25C1 Proficiency test outcome is: Satisfactory

Evaluation Procedure:

First Iteration: For each level, the qualified results reported by participating analysts and reference labs are pooled, the mean, standard deviation and acceptable range are calculated using truncation, and results outside the acceptable range are excluded from the second iteration.

Second iteration: The mean, standard deviation and acceptable range are recalculated using truncation, every analyst's qualified results are compared to the recalculated acceptable range, and every analyst is assigned an outcome for the proficiency cycle. All analysts with Results Outside Acceptable Range receive retest samples. The retest results are compared to the acceptable range established by the initial test and the retested analyst's outcome for the proficiency cycle is assigned based on the second comparison.

Test Type	Vial Level	Vial Number	Results #1 Reported	#1 Z Score	Results #2 Reported	#2 Z Score
I	D	1404	0.202	-0.333	0.202	-0.333
I	E	1506	0.074	0.000	0.074	0.000

Proficiency Cycle Statistics

Level	Lower Limit	Upper Limit	Mean (Avg)	Std Dev	N	Number Out Of Range	
						1st Iteration	2nd Iteration
A	0.227	0.245	0.236	0.003	86	1	1
B	0.140	0.152	0.146	0.002	88	1	0
C	0.039	0.045	0.042	0.001	86	1	0
D	0.194	0.212	0.203	0.003	86	1	0
E	0.068	0.080	0.074	0.002	86	0	0

Notes: Z Score is your reported analytical result compared to the mean in terms of the standard deviation, calculated as (Result-Mean)/StddDev. The Parameter n is the number of results reported which are used to calculate the second iteration mean and standard deviation.

Florida Department of Law Enforcement

Alcohol Testing Program

BLOOD ALCOHOL PROFICIENCY INITIAL TEST OUTCOME REPORT

Proficiency Cycle: 25C1

Receive Results By: 04/22/2025

Method: GC

Analyst Name: Giachetti, Alexander

Your 25C1 Proficiency test outcome is: Satisfactory

Evaluation Procedure:

First Iteration: For each level, the qualified results reported by participating analysts and reference labs are pooled, the mean, standard deviation and acceptable range are calculated using truncation, and results outside the acceptable range are excluded from the second iteration.

Second iteration: The mean, standard deviation and acceptable range are recalculated using truncation, every analyst's qualified results are compared to the recalculated acceptable range, and every analyst is assigned an outcome for the proficiency cycle. All analysts with Results Outside Acceptable Range receive retest samples. The retest results are compared to the acceptable range established by the initial test and the retested analyst's outcome for the proficiency cycle is assigned based on the second comparison.

Test Type	Vial Level	Vial Number	Results #1 Reported	#1 Z Score	Results #2 Reported	#2 Z Score
I	A	1104	0.234	-0.667	0.236	0.000
I	B	1207	0.144	-1.000	0.145	-0.500

Proficiency Cycle Statistics

Level	Lower Limit	Upper Limit	Mean (Avg)	Std Dev	N	Number Out Of Range	
						1st Iteration	2nd Iteration
A	0.227	0.245	0.236	0.003	86	1	1
B	0.140	0.152	0.146	0.002	88	1	0
C	0.039	0.045	0.042	0.001	86	1	0
D	0.194	0.212	0.203	0.003	86	1	0
E	0.068	0.080	0.074	0.002	86	0	0

Notes: Z Score is your reported analytical result compared to the mean in terms of the standard deviation, calculated as (Result-Mean)/StddDev. The Parameter n is the number of results reported which are used to calculate the second iteration mean and standard deviation.

Florida Department of Law Enforcement

Alcohol Testing Program

BLOOD ALCOHOL PROFICIENCY INITIAL TEST OUTCOME REPORT

Proficiency Cycle: 25C1

Receive Results By: 04/22/2025

Method: GC

Analyst Name: Gonyea, Jennifer

Your 25C1 Proficiency test outcome is: Satisfactory

Evaluation Procedure:

First Iteration: For each level, the qualified results reported by participating analysts and reference labs are pooled, the mean, standard deviation and acceptable range are calculated using truncation, and results outside the acceptable range are excluded from the second iteration.

Second iteration: The mean, standard deviation and acceptable range are recalculated using truncation, every analyst's qualified results are compared to the recalculated acceptable range, and every analyst is assigned an outcome for the proficiency cycle. All analysts with Results Outside Acceptable Range receive retest samples. The retest results are compared to the acceptable range established by the initial test and the retested analyst's outcome for the proficiency cycle is assigned based on the second comparison.

Test Type	Vial Level	Vial Number	Results #1 Reported	#1 Z Score	Results #2 Reported	#2 Z Score
I	C	1305	0.044	2.000	0.043	1.000
I	D	1406	0.201	-0.667	0.204	0.333

Proficiency Cycle Statistics

Level	Lower Limit	Upper Limit	Mean (Avg)	Std Dev	N	Number Out Of Range	
						1st Iteration	2nd Iteration
A	0.227	0.245	0.236	0.003	86	1	1
B	0.140	0.152	0.146	0.002	88	1	0
C	0.039	0.045	0.042	0.001	86	1	0
D	0.194	0.212	0.203	0.003	86	1	0
E	0.068	0.080	0.074	0.002	86	0	0

Notes: Z Score is your reported analytical result compared to the mean in terms of the standard deviation, calculated as (Result-Mean)/StddDev. The Parameter n is the number of results reported which are used to calculate the second iteration mean and standard deviation.

Florida Department of Law Enforcement

Alcohol Testing Program

BLOOD ALCOHOL PROFICIENCY INITIAL TEST OUTCOME REPORT

Proficiency Cycle: 25C1

Receive Results By: 04/21/2025

Method: GC

Analyst Name: Gottal, Josephine

Your 25C1 Proficiency test outcome is: Satisfactory

Evaluation Procedure:

First Iteration: For each level, the qualified results reported by participating analysts and reference labs are pooled, the mean, standard deviation and acceptable range are calculated using truncation, and results outside the acceptable range are excluded from the second iteration.

Second iteration: The mean, standard deviation and acceptable range are recalculated using truncation, every analyst's qualified results are compared to the recalculated acceptable range, and every analyst is assigned an outcome for the proficiency cycle. All analysts with Results Outside Acceptable Range receive retest samples. The retest results are compared to the acceptable range established by the initial test and the retested analyst's outcome for the proficiency cycle is assigned based on the second comparison.

Test Type	Vial Level	Vial Number	Results #1 Reported	#1 Z Score	Results #2 Reported	#2 Z Score
I	A	1103	0.237	0.333	0.237	0.333
I	E	1507	0.074	0.000	0.074	0.000

Proficiency Cycle Statistics

Level	Lower Limit	Upper Limit	Mean (Avg)	Std Dev	N	Number Out Of Range	
						1st Iteration	2nd Iteration
A	0.227	0.245	0.236	0.003	86	1	1
B	0.140	0.152	0.146	0.002	88	1	0
C	0.039	0.045	0.042	0.001	86	1	0
D	0.194	0.212	0.203	0.003	86	1	0
E	0.068	0.080	0.074	0.002	86	0	0

Notes: Z Score is your reported analytical result compared to the mean in terms of the standard deviation, calculated as (Result-Mean)/StddDev. The Parameter n is the number of results reported which are used to calculate the second iteration mean and standard deviation.

Florida Department of Law Enforcement

Alcohol Testing Program

BLOOD ALCOHOL PROFICIENCY INITIAL TEST OUTCOME REPORT

Proficiency Cycle: 25C1

Receive Results By: 05/01/2025

Method: GC

Analyst Name: Graham, Thomas

Your 25C1 Proficiency test outcome is: Satisfactory

Evaluation Procedure:

First Iteration: For each level, the qualified results reported by participating analysts and reference labs are pooled, the mean, standard deviation and acceptable range are calculated using truncation, and results outside the acceptable range are excluded from the second iteration.

Second iteration: The mean, standard deviation and acceptable range are recalculated using truncation, every analyst's qualified results are compared to the recalculated acceptable range, and every analyst is assigned an outcome for the proficiency cycle. All analysts with Results Outside Acceptable Range receive retest samples. The retest results are compared to the acceptable range established by the initial test and the retested analyst's outcome for the proficiency cycle is assigned based on the second comparison.

Test Type	Vial Level	Vial Number	Results #1 Reported	#1 Z Score	Results #2 Reported	#2 Z Score
I	B	1208	0.147	0.500	0.147	0.500
I	C	1304	0.043	1.000	0.043	1.000

Proficiency Cycle Statistics

Level	Lower Limit	Upper Limit	Mean (Avg)	Std Dev	N	Number Out Of Range	
						1st Iteration	2nd Iteration
A	0.227	0.245	0.236	0.003	86	1	1
B	0.140	0.152	0.146	0.002	88	1	0
C	0.039	0.045	0.042	0.001	86	1	0
D	0.194	0.212	0.203	0.003	86	1	0
E	0.068	0.080	0.074	0.002	86	0	0

Notes: Z Score is your reported analytical result compared to the mean in terms of the standard deviation, calculated as (Result-Mean)/StddDev. The Parameter n is the number of results reported which are used to calculate the second iteration mean and standard deviation.

Florida Department of Law Enforcement

Alcohol Testing Program

BLOOD ALCOHOL PROFICIENCY INITIAL TEST OUTCOME REPORT

Proficiency Cycle: 25C1

Receive Results By: 05/01/2025

Method: GC

Analyst Name: Graham, Thomas

Your 25C1 Proficiency test outcome is: Satisfactory

Evaluation Procedure:

First Iteration: For each level, the qualified results reported by participating analysts and reference labs are pooled, the mean, standard deviation and acceptable range are calculated using truncation, and results outside the acceptable range are excluded from the second iteration.

Second iteration: The mean, standard deviation and acceptable range are recalculated using truncation, every analyst's qualified results are compared to the recalculated acceptable range, and every analyst is assigned an outcome for the proficiency cycle. All analysts with Results Outside Acceptable Range receive retest samples. The retest results are compared to the acceptable range established by the initial test and the retested analyst's outcome for the proficiency cycle is assigned based on the second comparison.

Test Type	Vial Level	Vial Number	Results #1 Reported	#1 Z Score	Results #2 Reported	#2 Z Score
I	D	1407	0.201	-0.667	0.203	0.000
I	E	1508	0.073	-0.500	0.074	0.000

Proficiency Cycle Statistics

Level	Lower Limit	Upper Limit	Mean (Avg)	Std Dev	N	Number Out Of Range	
						1st Iteration	2nd Iteration
A	0.227	0.245	0.236	0.003	86	1	1
B	0.140	0.152	0.146	0.002	88	1	0
C	0.039	0.045	0.042	0.001	86	1	0
D	0.194	0.212	0.203	0.003	86	1	0
E	0.068	0.080	0.074	0.002	86	0	0

Notes: Z Score is your reported analytical result compared to the mean in terms of the standard deviation, calculated as (Result-Mean)/StddDev. The Parameter n is the number of results reported which are used to calculate the second iteration mean and standard deviation.

Florida Department of Law Enforcement

Alcohol Testing Program

BLOOD ALCOHOL PROFICIENCY INITIAL TEST OUTCOME REPORT

Proficiency Cycle: 25C1

Receive Results By: 04/30/2025

Method: GC

Analyst Name: Grossmann, Hannah

Your 25C1 Proficiency test outcome is: Satisfactory

Evaluation Procedure:

First Iteration: For each level, the qualified results reported by participating analysts and reference labs are pooled, the mean, standard deviation and acceptable range are calculated using truncation, and results outside the acceptable range are excluded from the second iteration.

Second iteration: The mean, standard deviation and acceptable range are recalculated using truncation, every analyst's qualified results are compared to the recalculated acceptable range, and every analyst is assigned an outcome for the proficiency cycle. All analysts with Results Outside Acceptable Range receive retest samples. The retest results are compared to the acceptable range established by the initial test and the retested analyst's outcome for the proficiency cycle is assigned based on the second comparison.

Test Type	Vial Level	Vial Number	Results #1 Reported	#1 Z Score	Results #2 Reported	#2 Z Score
I	A	1102	0.235	-0.333	0.236	0.000
I	B	1209	0.145	-0.500	0.146	0.000

Proficiency Cycle Statistics

Level	Lower Limit	Upper Limit	Mean (Avg)	Std Dev	N	Number Out Of Range	
						1st Iteration	2nd Iteration
A	0.227	0.245	0.236	0.003	86	1	1
B	0.140	0.152	0.146	0.002	88	1	0
C	0.039	0.045	0.042	0.001	86	1	0
D	0.194	0.212	0.203	0.003	86	1	0
E	0.068	0.080	0.074	0.002	86	0	0

Notes: Z Score is your reported analytical result compared to the mean in terms of the standard deviation, calculated as (Result-Mean)/StddDev. The Parameter n is the number of results reported which are used to calculate the second iteration mean and standard deviation.

Florida Department of Law Enforcement

Alcohol Testing Program

BLOOD ALCOHOL PROFICIENCY INITIAL TEST OUTCOME REPORT

Proficiency Cycle: 25C1

Receive Results By: 04/18/2025

Method: GC

Analyst Name: Haggard, Jamie

Your 25C1 Proficiency test outcome is: Satisfactory

Evaluation Procedure:

First Iteration: For each level, the qualified results reported by participating analysts and reference labs are pooled, the mean, standard deviation and acceptable range are calculated using truncation, and results outside the acceptable range are excluded from the second iteration.

Second iteration: The mean, standard deviation and acceptable range are recalculated using truncation, every analyst's qualified results are compared to the recalculated acceptable range, and every analyst is assigned an outcome for the proficiency cycle. All analysts with Results Outside Acceptable Range receive retest samples. The retest results are compared to the acceptable range established by the initial test and the retested analyst's outcome for the proficiency cycle is assigned based on the second comparison.

Test Type	Vial Level	Vial Number	Results #1 Reported	#1 Z Score	Results #2 Reported	#2 Z Score
I	C	1303	0.043	1.000	0.043	1.000
I	D	1408	0.202	-0.333	0.207	1.333

Proficiency Cycle Statistics

Level	Lower Limit	Upper Limit	Mean (Avg)	Std Dev	N	Number Out Of Range	
						1st Iteration	2nd Iteration
A	0.227	0.245	0.236	0.003	86	1	1
B	0.140	0.152	0.146	0.002	88	1	0
C	0.039	0.045	0.042	0.001	86	1	0
D	0.194	0.212	0.203	0.003	86	1	0
E	0.068	0.080	0.074	0.002	86	0	0

Notes: Z Score is your reported analytical result compared to the mean in terms of the standard deviation, calculated as (Result-Mean)/StddDev. The Parameter n is the number of results reported which are used to calculate the second iteration mean and standard deviation.

Florida Department of Law Enforcement

Alcohol Testing Program

BLOOD ALCOHOL PROFICIENCY INITIAL TEST OUTCOME REPORT

Proficiency Cycle: 25C1

Receive Results By: 04/17/2025

Method: GC

Analyst Name: Hinds, Kelly

Your 25C1 Proficiency test outcome is: Satisfactory

Evaluation Procedure:

First Iteration: For each level, the qualified results reported by participating analysts and reference labs are pooled, the mean, standard deviation and acceptable range are calculated using truncation, and results outside the acceptable range are excluded from the second iteration.

Second iteration: The mean, standard deviation and acceptable range are recalculated using truncation, every analyst's qualified results are compared to the recalculated acceptable range, and every analyst is assigned an outcome for the proficiency cycle. All analysts with Results Outside Acceptable Range receive retest samples. The retest results are compared to the acceptable range established by the initial test and the retested analyst's outcome for the proficiency cycle is assigned based on the second comparison.

Test Type	Vial Level	Vial Number	Results #1 Reported	#1 Z Score	Results #2 Reported	#2 Z Score
I	A	1101	0.234	-0.667	0.237	0.333
I	E	1509	0.078	2.000	0.076	1.000

Proficiency Cycle Statistics

Level	Lower Limit	Upper Limit	Mean (Avg)	Std Dev	N	Number Out Of Range	
						1st Iteration	2nd Iteration
A	0.227	0.245	0.236	0.003	86	1	1
B	0.140	0.152	0.146	0.002	88	1	0
C	0.039	0.045	0.042	0.001	86	1	0
D	0.194	0.212	0.203	0.003	86	1	0
E	0.068	0.080	0.074	0.002	86	0	0

Notes: Z Score is your reported analytical result compared to the mean in terms of the standard deviation, calculated as (Result-Mean)/StddDev. The Parameter n is the number of results reported which are used to calculate the second iteration mean and standard deviation.

Florida Department of Law Enforcement

Alcohol Testing Program

BLOOD ALCOHOL PROFICIENCY INITIAL TEST OUTCOME REPORT

Proficiency Cycle: 25C1

Receive Results By: 05/05/2025

Method: GC

Analyst Name: Huene, Lauren

Your 25C1 Proficiency test outcome is: Satisfactory

Evaluation Procedure:

First Iteration: For each level, the qualified results reported by participating analysts and reference labs are pooled, the mean, standard deviation and acceptable range are calculated using truncation, and results outside the acceptable range are excluded from the second iteration.

Second iteration: The mean, standard deviation and acceptable range are recalculated using truncation, every analyst's qualified results are compared to the recalculated acceptable range, and every analyst is assigned an outcome for the proficiency cycle. All analysts with Results Outside Acceptable Range receive retest samples. The retest results are compared to the acceptable range established by the initial test and the retested analyst's outcome for the proficiency cycle is assigned based on the second comparison.

Test Type	Vial Level	Vial Number	Results #1 Reported	#1 Z Score	Results #2 Reported	#2 Z Score
I	B	1210	0.146	0.000	0.145	-0.500
I	C	1302	0.043	1.000	0.043	1.000

Proficiency Cycle Statistics

Level	Lower Limit	Upper Limit	Mean (Avg)	Std Dev	N	Number Out Of Range	
						1st Iteration	2nd Iteration
A	0.227	0.245	0.236	0.003	86	1	1
B	0.140	0.152	0.146	0.002	88	1	0
C	0.039	0.045	0.042	0.001	86	1	0
D	0.194	0.212	0.203	0.003	86	1	0
E	0.068	0.080	0.074	0.002	86	0	0

Notes: Z Score is your reported analytical result compared to the mean in terms of the standard deviation, calculated as (Result-Mean)/StddDev. The Parameter n is the number of results reported which are used to calculate the second iteration mean and standard deviation.

Florida Department of Law Enforcement

Alcohol Testing Program

BLOOD ALCOHOL PROFICIENCY INITIAL TEST OUTCOME REPORT

Proficiency Cycle: 25C1

Receive Results By: 05/05/2025

Method: GC

Analyst Name: Huene, Lauren

Your 25C1 Proficiency test outcome is: Satisfactory

Evaluation Procedure:

First Iteration: For each level, the qualified results reported by participating analysts and reference labs are pooled, the mean, standard deviation and acceptable range are calculated using truncation, and results outside the acceptable range are excluded from the second iteration.

Second iteration: The mean, standard deviation and acceptable range are recalculated using truncation, every analyst's qualified results are compared to the recalculated acceptable range, and every analyst is assigned an outcome for the proficiency cycle. All analysts with Results Outside Acceptable Range receive retest samples. The retest results are compared to the acceptable range established by the initial test and the retested analyst's outcome for the proficiency cycle is assigned based on the second comparison.

Test Type	Vial Level	Vial Number	Results #1 Reported	#1 Z Score	Results #2 Reported	#2 Z Score
I	D	1409	0.206	1.000	0.205	0.667
I	E	1510	0.075	0.500	0.074	0.000

Proficiency Cycle Statistics

Level	Lower Limit	Upper Limit	Mean (Avg)	Std Dev	N	Number Out Of Range	
						1st Iteration	2nd Iteration
A	0.227	0.245	0.236	0.003	86	1	1
B	0.140	0.152	0.146	0.002	88	1	0
C	0.039	0.045	0.042	0.001	86	1	0
D	0.194	0.212	0.203	0.003	86	1	0
E	0.068	0.080	0.074	0.002	86	0	0

Notes: Z Score is your reported analytical result compared to the mean in terms of the standard deviation, calculated as (Result-Mean)/StddDev. The Parameter n is the number of results reported which are used to calculate the second iteration mean and standard deviation.

Florida Department of Law Enforcement

Alcohol Testing Program

BLOOD ALCOHOL PROFICIENCY INITIAL TEST OUTCOME REPORT

Proficiency Cycle: 25C1

Receive Results By: 04/22/2025

Method: GC

Analyst Name: Humphrey, Susan

Your 25C1 Proficiency test outcome is: Satisfactory

Evaluation Procedure:

First Iteration: For each level, the qualified results reported by participating analysts and reference labs are pooled, the mean, standard deviation and acceptable range are calculated using truncation, and results outside the acceptable range are excluded from the second iteration.

Second iteration: The mean, standard deviation and acceptable range are recalculated using truncation, every analyst's qualified results are compared to the recalculated acceptable range, and every analyst is assigned an outcome for the proficiency cycle. All analysts with Results Outside Acceptable Range receive retest samples. The retest results are compared to the acceptable range established by the initial test and the retested analyst's outcome for the proficiency cycle is assigned based on the second comparison.

Test Type	Vial Level	Vial Number	Results #1 Reported	#1 Z Score	Results #2 Reported	#2 Z Score
I	A	1111	0.234	-0.667	0.236	0.000
I	B	1211	0.145	-0.500	0.145	-0.500

Proficiency Cycle Statistics

Level	Lower Limit	Upper Limit	Mean (Avg)	Std Dev	N	Number Out Of Range	
						1st Iteration	2nd Iteration
A	0.227	0.245	0.236	0.003	86	1	1
B	0.140	0.152	0.146	0.002	88	1	0
C	0.039	0.045	0.042	0.001	86	1	0
D	0.194	0.212	0.203	0.003	86	1	0
E	0.068	0.080	0.074	0.002	86	0	0

Notes: Z Score is your reported analytical result compared to the mean in terms of the standard deviation, calculated as (Result-Mean)/StddDev. The Parameter n is the number of results reported which are used to calculate the second iteration mean and standard deviation.

Florida Department of Law Enforcement

Alcohol Testing Program

BLOOD ALCOHOL PROFICIENCY INITIAL TEST OUTCOME REPORT

Proficiency Cycle: 25C1

Receive Results By: 04/23/2025

Method: GC

Analyst Name: Jean, Kenson

Your 25C1 Proficiency test outcome is: Satisfactory

Evaluation Procedure:

First Iteration: For each level, the qualified results reported by participating analysts and reference labs are pooled, the mean, standard deviation and acceptable range are calculated using truncation, and results outside the acceptable range are excluded from the second iteration.

Second iteration: The mean, standard deviation and acceptable range are recalculated using truncation, every analyst's qualified results are compared to the recalculated acceptable range, and every analyst is assigned an outcome for the proficiency cycle. All analysts with Results Outside Acceptable Range receive retest samples. The retest results are compared to the acceptable range established by the initial test and the retested analyst's outcome for the proficiency cycle is assigned based on the second comparison.

Test Type	Vial Level	Vial Number	Results #1 Reported	#1 Z Score	Results #2 Reported	#2 Z Score
I	C	1301	0.042	0.000	0.042	0.000
I	D	1411	0.203	0.000	0.203	0.000

Proficiency Cycle Statistics

Level	Lower Limit	Upper Limit	Mean (Avg)	Std Dev	N	Number Out Of Range	
						1st Iteration	2nd Iteration
A	0.227	0.245	0.236	0.003	86	1	1
B	0.140	0.152	0.146	0.002	88	1	0
C	0.039	0.045	0.042	0.001	86	1	0
D	0.194	0.212	0.203	0.003	86	1	0
E	0.068	0.080	0.074	0.002	86	0	0

Notes: Z Score is your reported analytical result compared to the mean in terms of the standard deviation, calculated as (Result-Mean)/StddDev. The Parameter n is the number of results reported which are used to calculate the second iteration mean and standard deviation.

Florida Department of Law Enforcement

Alcohol Testing Program

BLOOD ALCOHOL PROFICIENCY INITIAL TEST OUTCOME REPORT

Proficiency Cycle: 25C1

Receive Results By: 04/23/2025

Method: GC

Analyst Name: Jean, Kenson

Your 25C1 Proficiency test outcome is: Satisfactory

Evaluation Procedure:

First Iteration: For each level, the qualified results reported by participating analysts and reference labs are pooled, the mean, standard deviation and acceptable range are calculated using truncation, and results outside the acceptable range are excluded from the second iteration.

Second iteration: The mean, standard deviation and acceptable range are recalculated using truncation, every analyst's qualified results are compared to the recalculated acceptable range, and every analyst is assigned an outcome for the proficiency cycle. All analysts with Results Outside Acceptable Range receive retest samples. The retest results are compared to the acceptable range established by the initial test and the retested analyst's outcome for the proficiency cycle is assigned based on the second comparison.

Test Type	Vial Level	Vial Number	Results #1 Reported	#1 Z Score	Results #2 Reported	#2 Z Score
I	A	1112	0.237	0.333	0.234	-0.667
I	E	1511	0.074	0.000	0.074	0.000

Proficiency Cycle Statistics

Level	Lower Limit	Upper Limit	Mean (Avg)	Std Dev	N	Number Out Of Range	
						1st Iteration	2nd Iteration
A	0.227	0.245	0.236	0.003	86	1	1
B	0.140	0.152	0.146	0.002	88	1	0
C	0.039	0.045	0.042	0.001	86	1	0
D	0.194	0.212	0.203	0.003	86	1	0
E	0.068	0.080	0.074	0.002	86	0	0

Notes: Z Score is your reported analytical result compared to the mean in terms of the standard deviation, calculated as (Result-Mean)/StddDev. The Parameter n is the number of results reported which are used to calculate the second iteration mean and standard deviation.

Florida Department of Law Enforcement

Alcohol Testing Program

BLOOD ALCOHOL PROFICIENCY INITIAL TEST OUTCOME REPORT

Proficiency Cycle: 25C1

Receive Results By: 04/22/2025

Method: GC

Analyst Name: Kahl, Joseph

Your 25C1 Proficiency test outcome is: Satisfactory

Evaluation Procedure:

First Iteration: For each level, the qualified results reported by participating analysts and reference labs are pooled, the mean, standard deviation and acceptable range are calculated using truncation, and results outside the acceptable range are excluded from the second iteration.

Second iteration: The mean, standard deviation and acceptable range are recalculated using truncation, every analyst's qualified results are compared to the recalculated acceptable range, and every analyst is assigned an outcome for the proficiency cycle. All analysts with Results Outside Acceptable Range receive retest samples. The retest results are compared to the acceptable range established by the initial test and the retested analyst's outcome for the proficiency cycle is assigned based on the second comparison.

Test Type	Vial Level	Vial Number	Results #1 Reported	#1 Z Score	Results #2 Reported	#2 Z Score
I	B	1212	0.147	0.500	0.149	1.500
I	C	1311	0.044	2.000	0.044	2.000

Proficiency Cycle Statistics

Level	Lower Limit	Upper Limit	Mean (Avg)	Std Dev	N	Number Out Of Range	
						1st Iteration	2nd Iteration
A	0.227	0.245	0.236	0.003	86	1	1
B	0.140	0.152	0.146	0.002	88	1	0
C	0.039	0.045	0.042	0.001	86	1	0
D	0.194	0.212	0.203	0.003	86	1	0
E	0.068	0.080	0.074	0.002	86	0	0

Notes: Z Score is your reported analytical result compared to the mean in terms of the standard deviation, calculated as (Result-Mean)/StddDev. The Parameter n is the number of results reported which are used to calculate the second iteration mean and standard deviation.

Florida Department of Law Enforcement

Alcohol Testing Program

BLOOD ALCOHOL PROFICIENCY INITIAL TEST OUTCOME REPORT

Proficiency Cycle: 25C1

Receive Results By: 05/13/2025

Method: GC

Analyst Name: Kahl, Kristin

Your 25C1 Proficiency test outcome is: Satisfactory

Evaluation Procedure:

First Iteration: For each level, the qualified results reported by participating analysts and reference labs are pooled, the mean, standard deviation and acceptable range are calculated using truncation, and results outside the acceptable range are excluded from the second iteration.

Second iteration: The mean, standard deviation and acceptable range are recalculated using truncation, every analyst's qualified results are compared to the recalculated acceptable range, and every analyst is assigned an outcome for the proficiency cycle. All analysts with Results Outside Acceptable Range receive retest samples. The retest results are compared to the acceptable range established by the initial test and the retested analyst's outcome for the proficiency cycle is assigned based on the second comparison.

Test Type	Vial Level	Vial Number	Results #1 Reported	#1 Z Score	Results #2 Reported	#2 Z Score
I	D	1412	0.200	-1.000	0.199	-1.333
I	E	1512	0.072	-1.000	0.071	-1.500

Proficiency Cycle Statistics

Level	Lower Limit	Upper Limit	Mean (Avg)	Std Dev	N	Number Out Of Range	
						1st Iteration	2nd Iteration
A	0.227	0.245	0.236	0.003	86	1	1
B	0.140	0.152	0.146	0.002	88	1	0
C	0.039	0.045	0.042	0.001	86	1	0
D	0.194	0.212	0.203	0.003	86	1	0
E	0.068	0.080	0.074	0.002	86	0	0

Notes: Z Score is your reported analytical result compared to the mean in terms of the standard deviation, calculated as (Result-Mean)/StddDev. The Parameter n is the number of results reported which are used to calculate the second iteration mean and standard deviation.

Florida Department of Law Enforcement

Alcohol Testing Program

BLOOD ALCOHOL PROFICIENCY INITIAL TEST OUTCOME REPORT

Proficiency Cycle: 25C1

Receive Results By: 05/13/2025

Method: GC

Analyst Name: Kahl, Kristin

Your 25C1 Proficiency test outcome is: Satisfactory

Evaluation Procedure:

First Iteration: For each level, the qualified results reported by participating analysts and reference labs are pooled, the mean, standard deviation and acceptable range are calculated using truncation, and results outside the acceptable range are excluded from the second iteration.

Second iteration: The mean, standard deviation and acceptable range are recalculated using truncation, every analyst's qualified results are compared to the recalculated acceptable range, and every analyst is assigned an outcome for the proficiency cycle. All analysts with Results Outside Acceptable Range receive retest samples. The retest results are compared to the acceptable range established by the initial test and the retested analyst's outcome for the proficiency cycle is assigned based on the second comparison.

Test Type	Vial Level	Vial Number	Results #1 Reported	#1 Z Score	Results #2 Reported	#2 Z Score
I	A	1113	0.232	-1.333	0.233	-1.000
I	B	1213	0.143	-1.500	0.142	-2.000

Proficiency Cycle Statistics

Level	Lower Limit	Upper Limit	Mean (Avg)	Std Dev	N	Number Out Of Range	
						1st Iteration	2nd Iteration
A	0.227	0.245	0.236	0.003	86	1	1
B	0.140	0.152	0.146	0.002	88	1	0
C	0.039	0.045	0.042	0.001	86	1	0
D	0.194	0.212	0.203	0.003	86	1	0
E	0.068	0.080	0.074	0.002	86	0	0

Notes: Z Score is your reported analytical result compared to the mean in terms of the standard deviation, calculated as (Result-Mean)/StddDev. The Parameter n is the number of results reported which are used to calculate the second iteration mean and standard deviation.

Florida Department of Law Enforcement

Alcohol Testing Program

BLOOD ALCOHOL PROFICIENCY INITIAL TEST OUTCOME REPORT

Proficiency Cycle: 25C1

Receive Results By: 05/05/2025

Method: GC

Analyst Name: Kamandulis, Linet

Your 25C1 Proficiency test outcome is: Satisfactory

Evaluation Procedure:

First Iteration: For each level, the qualified results reported by participating analysts and reference labs are pooled, the mean, standard deviation and acceptable range are calculated using truncation, and results outside the acceptable range are excluded from the second iteration.

Second iteration: The mean, standard deviation and acceptable range are recalculated using truncation, every analyst's qualified results are compared to the recalculated acceptable range, and every analyst is assigned an outcome for the proficiency cycle. All analysts with Results Outside Acceptable Range receive retest samples. The retest results are compared to the acceptable range established by the initial test and the retested analyst's outcome for the proficiency cycle is assigned based on the second comparison.

Test Type	Vial Level	Vial Number	Results #1 Reported	#1 Z Score	Results #2 Reported	#2 Z Score
I	C	1312	0.041	-1.000	0.041	-1.000
I	D	1413	0.201	-0.667	0.202	-0.333

Proficiency Cycle Statistics

Level	Lower Limit	Upper Limit	Mean (Avg)	Std Dev	N	Number Out Of Range	
						1st Iteration	2nd Iteration
A	0.227	0.245	0.236	0.003	86	1	1
B	0.140	0.152	0.146	0.002	88	1	0
C	0.039	0.045	0.042	0.001	86	1	0
D	0.194	0.212	0.203	0.003	86	1	0
E	0.068	0.080	0.074	0.002	86	0	0

Notes: Z Score is your reported analytical result compared to the mean in terms of the standard deviation, calculated as (Result-Mean)/StddDev. The Parameter n is the number of results reported which are used to calculate the second iteration mean and standard deviation.

Florida Department of Law Enforcement

Alcohol Testing Program

BLOOD ALCOHOL PROFICIENCY INITIAL TEST OUTCOME REPORT

Proficiency Cycle: 25C1

Receive Results By: 05/05/2025

Method: GC

Analyst Name: Kamandulis, Linet

Your 25C1 Proficiency test outcome is: Satisfactory

Evaluation Procedure:

First Iteration: For each level, the qualified results reported by participating analysts and reference labs are pooled, the mean, standard deviation and acceptable range are calculated using truncation, and results outside the acceptable range are excluded from the second iteration.

Second iteration: The mean, standard deviation and acceptable range are recalculated using truncation, every analyst's qualified results are compared to the recalculated acceptable range, and every analyst is assigned an outcome for the proficiency cycle. All analysts with Results Outside Acceptable Range receive retest samples. The retest results are compared to the acceptable range established by the initial test and the retested analyst's outcome for the proficiency cycle is assigned based on the second comparison.

Test Type	Vial Level	Vial Number	Results #1 Reported	#1 Z Score	Results #2 Reported	#2 Z Score
I	A	1114	0.235	-0.333	0.235	-0.333
I	E	1513	0.073	-0.500	0.073	-0.500

Proficiency Cycle Statistics

Level	Lower Limit	Upper Limit	Mean (Avg)	Std Dev	N	Number Out Of Range	
						1st Iteration	2nd Iteration
A	0.227	0.245	0.236	0.003	86	1	1
B	0.140	0.152	0.146	0.002	88	1	0
C	0.039	0.045	0.042	0.001	86	1	0
D	0.194	0.212	0.203	0.003	86	1	0
E	0.068	0.080	0.074	0.002	86	0	0

Notes: Z Score is your reported analytical result compared to the mean in terms of the standard deviation, calculated as (Result-Mean)/StddDev. The Parameter n is the number of results reported which are used to calculate the second iteration mean and standard deviation.

Florida Department of Law Enforcement

Alcohol Testing Program

BLOOD ALCOHOL PROFICIENCY INITIAL TEST OUTCOME REPORT

Proficiency Cycle: 25C1

Receive Results By: 04/23/2025

Method: GC

Analyst Name: Kunsman, Gary

Your 25C1 Proficiency test outcome is: Satisfactory

Evaluation Procedure:

First Iteration: For each level, the qualified results reported by participating analysts and reference labs are pooled, the mean, standard deviation and acceptable range are calculated using truncation, and results outside the acceptable range are excluded from the second iteration.

Second iteration: The mean, standard deviation and acceptable range are recalculated using truncation, every analyst's qualified results are compared to the recalculated acceptable range, and every analyst is assigned an outcome for the proficiency cycle. All analysts with Results Outside Acceptable Range receive retest samples. The retest results are compared to the acceptable range established by the initial test and the retested analyst's outcome for the proficiency cycle is assigned based on the second comparison.

Test Type	Vial Level	Vial Number	Results #1 Reported	#1 Z Score	Results #2 Reported	#2 Z Score
I	B	1214	0.147	0.500	0.146	0.000
I	C	1313	0.044	2.000	0.043	1.000

Proficiency Cycle Statistics

Level	Lower Limit	Upper Limit	Mean (Avg)	Std Dev	N	Number Out Of Range	
						1st Iteration	2nd Iteration
A	0.227	0.245	0.236	0.003	86	1	1
B	0.140	0.152	0.146	0.002	88	1	0
C	0.039	0.045	0.042	0.001	86	1	0
D	0.194	0.212	0.203	0.003	86	1	0
E	0.068	0.080	0.074	0.002	86	0	0

Notes: Z Score is your reported analytical result compared to the mean in terms of the standard deviation, calculated as (Result-Mean)/StddDev. The Parameter n is the number of results reported which are used to calculate the second iteration mean and standard deviation.

Florida Department of Law Enforcement

Alcohol Testing Program

BLOOD ALCOHOL PROFICIENCY INITIAL TEST OUTCOME REPORT

Proficiency Cycle: 25C1

Receive Results By: 04/21/2025

Method: GC

Analyst Name: Leifheit, Nicole

Your 25C1 Proficiency test outcome is: Satisfactory

Evaluation Procedure:

First Iteration: For each level, the qualified results reported by participating analysts and reference labs are pooled, the mean, standard deviation and acceptable range are calculated using truncation, and results outside the acceptable range are excluded from the second iteration.

Second iteration: The mean, standard deviation and acceptable range are recalculated using truncation, every analyst's qualified results are compared to the recalculated acceptable range, and every analyst is assigned an outcome for the proficiency cycle. All analysts with Results Outside Acceptable Range receive retest samples. The retest results are compared to the acceptable range established by the initial test and the retested analyst's outcome for the proficiency cycle is assigned based on the second comparison.

Test Type	Vial Level	Vial Number	Results #1 Reported	#1 Z Score	Results #2 Reported	#2 Z Score
I	D	1414	0.206	1.000	0.205	0.667
I	E	1514	0.076	1.000	0.076	1.000

Proficiency Cycle Statistics

Level	Lower Limit	Upper Limit	Mean (Avg)	Std Dev	N	Number Out Of Range	
						1st Iteration	2nd Iteration
A	0.227	0.245	0.236	0.003	86	1	1
B	0.140	0.152	0.146	0.002	88	1	0
C	0.039	0.045	0.042	0.001	86	1	0
D	0.194	0.212	0.203	0.003	86	1	0
E	0.068	0.080	0.074	0.002	86	0	0

Notes: Z Score is your reported analytical result compared to the mean in terms of the standard deviation, calculated as (Result-Mean)/StddDev. The Parameter n is the number of results reported which are used to calculate the second iteration mean and standard deviation.

Florida Department of Law Enforcement

Alcohol Testing Program

BLOOD ALCOHOL PROFICIENCY INITIAL TEST OUTCOME REPORT

Proficiency Cycle: 25C1

Receive Results By: 04/21/2025

Method: GC

Analyst Name: Leifheit, Nicole

Your 25C1 Proficiency test outcome is: Satisfactory

Evaluation Procedure:

First Iteration: For each level, the qualified results reported by participating analysts and reference labs are pooled, the mean, standard deviation and acceptable range are calculated using truncation, and results outside the acceptable range are excluded from the second iteration.

Second iteration: The mean, standard deviation and acceptable range are recalculated using truncation, every analyst's qualified results are compared to the recalculated acceptable range, and every analyst is assigned an outcome for the proficiency cycle. All analysts with Results Outside Acceptable Range receive retest samples. The retest results are compared to the acceptable range established by the initial test and the retested analyst's outcome for the proficiency cycle is assigned based on the second comparison.

Test Type	Vial Level	Vial Number	Results #1 Reported	#1 Z Score	Results #2 Reported	#2 Z Score
I	A	1115	0.233	-1.000	0.235	-0.333
I	B	1215	0.146	0.000	0.144	-1.000

Proficiency Cycle Statistics

Level	Lower Limit	Upper Limit	Mean (Avg)	Std Dev	N	Number Out Of Range	
						1st Iteration	2nd Iteration
A	0.227	0.245	0.236	0.003	86	1	1
B	0.140	0.152	0.146	0.002	88	1	0
C	0.039	0.045	0.042	0.001	86	1	0
D	0.194	0.212	0.203	0.003	86	1	0
E	0.068	0.080	0.074	0.002	86	0	0

Notes: Z Score is your reported analytical result compared to the mean in terms of the standard deviation, calculated as (Result-Mean)/StddDev. The Parameter n is the number of results reported which are used to calculate the second iteration mean and standard deviation.

Florida Department of Law Enforcement

Alcohol Testing Program

BLOOD ALCOHOL PROFICIENCY INITIAL TEST OUTCOME REPORT

Proficiency Cycle: 25C1

Receive Results By: 04/29/2025

Method: GC

Analyst Name: Lewis, Jennifer

Your 25C1 Proficiency test outcome is: Satisfactory

Evaluation Procedure:

First Iteration: For each level, the qualified results reported by participating analysts and reference labs are pooled, the mean, standard deviation and acceptable range are calculated using truncation, and results outside the acceptable range are excluded from the second iteration.

Second iteration: The mean, standard deviation and acceptable range are recalculated using truncation, every analyst's qualified results are compared to the recalculated acceptable range, and every analyst is assigned an outcome for the proficiency cycle. All analysts with Results Outside Acceptable Range receive retest samples. The retest results are compared to the acceptable range established by the initial test and the retested analyst's outcome for the proficiency cycle is assigned based on the second comparison.

Test Type	Vial Level	Vial Number	Results #1 Reported	#1 Z Score	Results #2 Reported	#2 Z Score
I	C	1314	0.042	0.000	0.042	0.000
I	D	1415	0.202	-0.333	0.203	0.000

Proficiency Cycle Statistics

Level	Lower Limit	Upper Limit	Mean (Avg)	Std Dev	N	Number Out Of Range	
						1st Iteration	2nd Iteration
A	0.227	0.245	0.236	0.003	86	1	1
B	0.140	0.152	0.146	0.002	88	1	0
C	0.039	0.045	0.042	0.001	86	1	0
D	0.194	0.212	0.203	0.003	86	1	0
E	0.068	0.080	0.074	0.002	86	0	0

Notes: Z Score is your reported analytical result compared to the mean in terms of the standard deviation, calculated as (Result-Mean)/StddDev. The Parameter n is the number of results reported which are used to calculate the second iteration mean and standard deviation.

Florida Department of Law Enforcement

Alcohol Testing Program

BLOOD ALCOHOL PROFICIENCY INITIAL TEST OUTCOME REPORT

Proficiency Cycle: 25C1

Receive Results By: 04/29/2025

Method: GC

Analyst Name: Lewis, Jennifer

Your 25C1 Proficiency test outcome is: Satisfactory

Evaluation Procedure:

First Iteration: For each level, the qualified results reported by participating analysts and reference labs are pooled, the mean, standard deviation and acceptable range are calculated using truncation, and results outside the acceptable range are excluded from the second iteration.

Second iteration: The mean, standard deviation and acceptable range are recalculated using truncation, every analyst's qualified results are compared to the recalculated acceptable range, and every analyst is assigned an outcome for the proficiency cycle. All analysts with Results Outside Acceptable Range receive retest samples. The retest results are compared to the acceptable range established by the initial test and the retested analyst's outcome for the proficiency cycle is assigned based on the second comparison.

Test Type	Vial Level	Vial Number	Results #1 Reported	#1 Z Score	Results #2 Reported	#2 Z Score
I	A	1116	0.235	-0.333	0.236	0.000
I	E	1515	0.073	-0.500	0.073	-0.500

Proficiency Cycle Statistics

Level	Lower Limit	Upper Limit	Mean (Avg)	Std Dev	N	Number Out Of Range	
						1st Iteration	2nd Iteration
A	0.227	0.245	0.236	0.003	86	1	1
B	0.140	0.152	0.146	0.002	88	1	0
C	0.039	0.045	0.042	0.001	86	1	0
D	0.194	0.212	0.203	0.003	86	1	0
E	0.068	0.080	0.074	0.002	86	0	0

Notes: Z Score is your reported analytical result compared to the mean in terms of the standard deviation, calculated as (Result-Mean)/StddDev. The Parameter n is the number of results reported which are used to calculate the second iteration mean and standard deviation.

Florida Department of Law Enforcement

Alcohol Testing Program

BLOOD ALCOHOL PROFICIENCY INITIAL TEST OUTCOME REPORT

Proficiency Cycle: 25C1

Receive Results By: 04/18/2025

Method: GC

Analyst Name: Lopez, Olivia

Your 25C1 Proficiency test outcome is: Satisfactory

Evaluation Procedure:

First Iteration: For each level, the qualified results reported by participating analysts and reference labs are pooled, the mean, standard deviation and acceptable range are calculated using truncation, and results outside the acceptable range are excluded from the second iteration.

Second iteration: The mean, standard deviation and acceptable range are recalculated using truncation, every analyst's qualified results are compared to the recalculated acceptable range, and every analyst is assigned an outcome for the proficiency cycle. All analysts with Results Outside Acceptable Range receive retest samples. The retest results are compared to the acceptable range established by the initial test and the retested analyst's outcome for the proficiency cycle is assigned based on the second comparison.

Test Type	Vial Level	Vial Number	Results #1 Reported	#1 Z Score	Results #2 Reported	#2 Z Score
I	B	1216	0.144	-1.000	0.144	-1.000
I	C	1315	0.042	0.000	0.041	-1.000

Proficiency Cycle Statistics

Level	Lower Limit	Upper Limit	Mean (Avg)	Std Dev	N	Number Out Of Range	
						1st Iteration	2nd Iteration
A	0.227	0.245	0.236	0.003	86	1	1
B	0.140	0.152	0.146	0.002	88	1	0
C	0.039	0.045	0.042	0.001	86	1	0
D	0.194	0.212	0.203	0.003	86	1	0
E	0.068	0.080	0.074	0.002	86	0	0

Notes: Z Score is your reported analytical result compared to the mean in terms of the standard deviation, calculated as (Result-Mean)/StddDev. The Parameter n is the number of results reported which are used to calculate the second iteration mean and standard deviation.

Florida Department of Law Enforcement

Alcohol Testing Program

BLOOD ALCOHOL PROFICIENCY INITIAL TEST OUTCOME REPORT

Proficiency Cycle: 25C1

Receive Results By: 04/19/2025

Method: GC

Analyst Name: Mauser, Jessica

Your 25C1 Proficiency test outcome is: Satisfactory

Evaluation Procedure:

First Iteration: For each level, the qualified results reported by participating analysts and reference labs are pooled, the mean, standard deviation and acceptable range are calculated using truncation, and results outside the acceptable range are excluded from the second iteration.

Second iteration: The mean, standard deviation and acceptable range are recalculated using truncation, every analyst's qualified results are compared to the recalculated acceptable range, and every analyst is assigned an outcome for the proficiency cycle. All analysts with Results Outside Acceptable Range receive retest samples. The retest results are compared to the acceptable range established by the initial test and the retested analyst's outcome for the proficiency cycle is assigned based on the second comparison.

Test Type	Vial Level	Vial Number	Results #1 Reported	#1 Z Score	Results #2 Reported	#2 Z Score
I	D	1416	0.203	0.000	0.203	0.000
I	E	1516	0.073	-0.500	0.074	0.000

Proficiency Cycle Statistics

Level	Lower Limit	Upper Limit	Mean (Avg)	Std Dev	N	Number Out Of Range	
						1st Iteration	2nd Iteration
A	0.227	0.245	0.236	0.003	86	1	1
B	0.140	0.152	0.146	0.002	88	1	0
C	0.039	0.045	0.042	0.001	86	1	0
D	0.194	0.212	0.203	0.003	86	1	0
E	0.068	0.080	0.074	0.002	86	0	0

Notes: Z Score is your reported analytical result compared to the mean in terms of the standard deviation, calculated as (Result-Mean)/StddDev. The Parameter n is the number of results reported which are used to calculate the second iteration mean and standard deviation.

Florida Department of Law Enforcement

Alcohol Testing Program

BLOOD ALCOHOL PROFICIENCY INITIAL TEST OUTCOME REPORT

Proficiency Cycle: 25C1

Receive Results By: 04/28/2025

Method: GC

Analyst Name: McCool, Lauren

Your 25C1 Proficiency test outcome is: Satisfactory

Evaluation Procedure:

First Iteration: For each level, the qualified results reported by participating analysts and reference labs are pooled, the mean, standard deviation and acceptable range are calculated using truncation, and results outside the acceptable range are excluded from the second iteration.

Second iteration: The mean, standard deviation and acceptable range are recalculated using truncation, every analyst's qualified results are compared to the recalculated acceptable range, and every analyst is assigned an outcome for the proficiency cycle. All analysts with Results Outside Acceptable Range receive retest samples. The retest results are compared to the acceptable range established by the initial test and the retested analyst's outcome for the proficiency cycle is assigned based on the second comparison.

Test Type	Vial Level	Vial Number	Results #1 Reported	#1 Z Score	Results #2 Reported	#2 Z Score
I	A	1117	0.236	0.000	0.237	0.333
I	B	1217	0.145	-0.500	0.145	-0.500

Proficiency Cycle Statistics

Level	Lower Limit	Upper Limit	Mean (Avg)	Std Dev	N	Number Out Of Range	
						1st Iteration	2nd Iteration
A	0.227	0.245	0.236	0.003	86	1	1
B	0.140	0.152	0.146	0.002	88	1	0
C	0.039	0.045	0.042	0.001	86	1	0
D	0.194	0.212	0.203	0.003	86	1	0
E	0.068	0.080	0.074	0.002	86	0	0

Notes: Z Score is your reported analytical result compared to the mean in terms of the standard deviation, calculated as (Result-Mean)/StddDev. The Parameter n is the number of results reported which are used to calculate the second iteration mean and standard deviation.

Florida Department of Law Enforcement

Alcohol Testing Program

BLOOD ALCOHOL PROFICIENCY INITIAL TEST OUTCOME REPORT

Proficiency Cycle: 25C1

Receive Results By: 04/28/2025

Method: GC

Analyst Name: McCool, Lauren

Your 25C1 Proficiency test outcome is: Satisfactory

Evaluation Procedure:

First Iteration: For each level, the qualified results reported by participating analysts and reference labs are pooled, the mean, standard deviation and acceptable range are calculated using truncation, and results outside the acceptable range are excluded from the second iteration.

Second iteration: The mean, standard deviation and acceptable range are recalculated using truncation, every analyst's qualified results are compared to the recalculated acceptable range, and every analyst is assigned an outcome for the proficiency cycle. All analysts with Results Outside Acceptable Range receive retest samples. The retest results are compared to the acceptable range established by the initial test and the retested analyst's outcome for the proficiency cycle is assigned based on the second comparison.

Test Type	Vial Level	Vial Number	Results #1 Reported	#1 Z Score	Results #2 Reported	#2 Z Score
I	C	1316	0.042	0.000	0.042	0.000
I	D	1417	0.203	0.000	0.202	-0.333

Proficiency Cycle Statistics

Level	Lower Limit	Upper Limit	Mean (Avg)	Std Dev	N	Number Out Of Range	
						1st Iteration	2nd Iteration
A	0.227	0.245	0.236	0.003	86	1	1
B	0.140	0.152	0.146	0.002	88	1	0
C	0.039	0.045	0.042	0.001	86	1	0
D	0.194	0.212	0.203	0.003	86	1	0
E	0.068	0.080	0.074	0.002	86	0	0

Notes: Z Score is your reported analytical result compared to the mean in terms of the standard deviation, calculated as (Result-Mean)/StddDev. The Parameter n is the number of results reported which are used to calculate the second iteration mean and standard deviation.

Florida Department of Law Enforcement

Alcohol Testing Program

BLOOD ALCOHOL PROFICIENCY INITIAL TEST OUTCOME REPORT

Proficiency Cycle: 25C1

Receive Results By: 04/28/2025

Method: GC

Analyst Name: McEachern, Christine

Your 25C1 Proficiency test outcome is: Satisfactory

Evaluation Procedure:

First Iteration: For each level, the qualified results reported by participating analysts and reference labs are pooled, the mean, standard deviation and acceptable range are calculated using truncation, and results outside the acceptable range are excluded from the second iteration.

Second iteration: The mean, standard deviation and acceptable range are recalculated using truncation, every analyst's qualified results are compared to the recalculated acceptable range, and every analyst is assigned an outcome for the proficiency cycle. All analysts with Results Outside Acceptable Range receive retest samples. The retest results are compared to the acceptable range established by the initial test and the retested analyst's outcome for the proficiency cycle is assigned based on the second comparison.

Test Type	Vial Level	Vial Number	Results #1 Reported	#1 Z Score	Results #2 Reported	#2 Z Score
I	A	1142	0.239	1.000	0.238	0.667
I	B	1242	0.145	-0.500	0.146	0.000
I	C	1342	0.042	0.000	0.042	0.000
I	D	1441	0.204	0.333	0.203	0.000
I	E	1541	0.074	0.000	0.073	-0.500

Proficiency Cycle Statistics

Level	Lower Limit	Upper Limit	Mean (Avg)	Std Dev	N	Number Out Of Range	
						1st Iteration	2nd Iteration
A	0.227	0.245	0.236	0.003	86	1	1
B	0.140	0.152	0.146	0.002	88	1	0
C	0.039	0.045	0.042	0.001	86	1	0
D	0.194	0.212	0.203	0.003	86	1	0
E	0.068	0.080	0.074	0.002	86	0	0

Notes: Z Score is your reported analytical result compared to the mean in terms of the standard deviation, calculated as (Result-Mean)/StddDev. The Parameter n is the number of results reported which are used to calculate the second iteration mean and standard deviation.

Florida Department of Law Enforcement

Alcohol Testing Program

BLOOD ALCOHOL PROFICIENCY INITIAL TEST OUTCOME REPORT

Proficiency Cycle: 25C1

Receive Results By: 04/24/2025

Method: GC

Analyst Name: McKee, Stacy

Your 25C1 Proficiency test outcome is: Satisfactory

Evaluation Procedure:

First Iteration: For each level, the qualified results reported by participating analysts and reference labs are pooled, the mean, standard deviation and acceptable range are calculated using truncation, and results outside the acceptable range are excluded from the second iteration.

Second iteration: The mean, standard deviation and acceptable range are recalculated using truncation, every analyst's qualified results are compared to the recalculated acceptable range, and every analyst is assigned an outcome for the proficiency cycle. All analysts with Results Outside Acceptable Range receive retest samples. The retest results are compared to the acceptable range established by the initial test and the retested analyst's outcome for the proficiency cycle is assigned based on the second comparison.

Test Type	Vial Level	Vial Number	Results #1 Reported	#1 Z Score	Results #2 Reported	#2 Z Score
I	A	1118	0.232	-1.333	0.237	0.333
I	E	1517	0.078	2.000	0.076	1.000

Proficiency Cycle Statistics

Level	Lower Limit	Upper Limit	Mean (Avg)	Std Dev	N	Number Out Of Range	
						1st Iteration	2nd Iteration
A	0.227	0.245	0.236	0.003	86	1	1
B	0.140	0.152	0.146	0.002	88	1	0
C	0.039	0.045	0.042	0.001	86	1	0
D	0.194	0.212	0.203	0.003	86	1	0
E	0.068	0.080	0.074	0.002	86	0	0

Notes: Z Score is your reported analytical result compared to the mean in terms of the standard deviation, calculated as (Result-Mean)/StddDev. The Parameter n is the number of results reported which are used to calculate the second iteration mean and standard deviation.

Florida Department of Law Enforcement

Alcohol Testing Program

BLOOD ALCOHOL PROFICIENCY INITIAL TEST OUTCOME REPORT

Proficiency Cycle: 25C1

Receive Results By: 04/25/2025

Method: GC

Analyst Name: Mendenhall, Savanna

Your 25C1 Proficiency test outcome is: Satisfactory

Evaluation Procedure:

First Iteration: For each level, the qualified results reported by participating analysts and reference labs are pooled, the mean, standard deviation and acceptable range are calculated using truncation, and results outside the acceptable range are excluded from the second iteration.

Second iteration: The mean, standard deviation and acceptable range are recalculated using truncation, every analyst's qualified results are compared to the recalculated acceptable range, and every analyst is assigned an outcome for the proficiency cycle. All analysts with Results Outside Acceptable Range receive retest samples. The retest results are compared to the acceptable range established by the initial test and the retested analyst's outcome for the proficiency cycle is assigned based on the second comparison.

Test Type	Vial Level	Vial Number	Results #1 Reported	#1 Z Score	Results #2 Reported	#2 Z Score
I	B	1218	0.148	1.000	0.148	1.000
I	C	1317	0.043	1.000	0.043	1.000

Proficiency Cycle Statistics

Level	Lower Limit	Upper Limit	Mean (Avg)	Std Dev	N	Number Out Of Range	
						1st Iteration	2nd Iteration
A	0.227	0.245	0.236	0.003	86	1	1
B	0.140	0.152	0.146	0.002	88	1	0
C	0.039	0.045	0.042	0.001	86	1	0
D	0.194	0.212	0.203	0.003	86	1	0
E	0.068	0.080	0.074	0.002	86	0	0

Notes: Z Score is your reported analytical result compared to the mean in terms of the standard deviation, calculated as (Result-Mean)/StddDev. The Parameter n is the number of results reported which are used to calculate the second iteration mean and standard deviation.

Florida Department of Law Enforcement

Alcohol Testing Program

BLOOD ALCOHOL PROFICIENCY INITIAL TEST OUTCOME REPORT

Proficiency Cycle: 25C1

Receive Results By: 04/25/2025

Method: GC

Analyst Name: Morato, Alan

Your 25C1 Proficiency test outcome is: Satisfactory

Evaluation Procedure:

First Iteration: For each level, the qualified results reported by participating analysts and reference labs are pooled, the mean, standard deviation and acceptable range are calculated using truncation, and results outside the acceptable range are excluded from the second iteration.

Second iteration: The mean, standard deviation and acceptable range are recalculated using truncation, every analyst's qualified results are compared to the recalculated acceptable range, and every analyst is assigned an outcome for the proficiency cycle. All analysts with Results Outside Acceptable Range receive retest samples. The retest results are compared to the acceptable range established by the initial test and the retested analyst's outcome for the proficiency cycle is assigned based on the second comparison.

Test Type	Vial Level	Vial Number	Results #1 Reported	#1 Z Score	Results #2 Reported	#2 Z Score
I	A	1136	0.239	1.000	0.239	1.000
I	B	1236	0.147	0.500	0.147	0.500
I	C	1335	0.044	2.000	0.044	2.000
I	D	1435	0.205	0.667	0.205	0.667
I	E	1535	0.076	1.000	0.075	0.500

Proficiency Cycle Statistics

Level	Lower Limit	Upper Limit	Mean (Avg)	Std Dev	N	Number Out Of Range	
						1st Iteration	2nd Iteration
A	0.227	0.245	0.236	0.003	86	1	1
B	0.140	0.152	0.146	0.002	88	1	0
C	0.039	0.045	0.042	0.001	86	1	0
D	0.194	0.212	0.203	0.003	86	1	0
E	0.068	0.080	0.074	0.002	86	0	0

Notes: Z Score is your reported analytical result compared to the mean in terms of the standard deviation, calculated as $(\text{Result} - \text{Mean}) / \text{StdDev}$. The Parameter n is the number of results reported which are used to calculate the second iteration mean and standard deviation.

Florida Department of Law Enforcement

Alcohol Testing Program

BLOOD ALCOHOL PROFICIENCY INITIAL TEST OUTCOME REPORT

Proficiency Cycle: 25C1

Receive Results By: 04/23/2025

Method: GC

Analyst Name: Morato, Alan

Your 25C1 Proficiency test outcome is: Satisfactory

Evaluation Procedure:

First Iteration: For each level, the qualified results reported by participating analysts and reference labs are pooled, the mean, standard deviation and acceptable range are calculated using truncation, and results outside the acceptable range are excluded from the second iteration.

Second iteration: The mean, standard deviation and acceptable range are recalculated using truncation, every analyst's qualified results are compared to the recalculated acceptable range, and every analyst is assigned an outcome for the proficiency cycle. All analysts with Results Outside Acceptable Range receive retest samples. The retest results are compared to the acceptable range established by the initial test and the retested analyst's outcome for the proficiency cycle is assigned based on the second comparison.

Test Type	Vial Level	Vial Number	Results #1 Reported	#1 Z Score	Results #2 Reported	#2 Z Score
I	A	1137	0.239	1.000	0.235	-0.333
I	B	1237	0.147	0.500	0.147	0.500
I	C	1336	0.043	1.000	0.044	2.000
I	D	1436	0.205	0.667	0.202	-0.333
I	E	1536	0.075	0.500	0.075	0.500

Proficiency Cycle Statistics

Level	Lower Limit	Upper Limit	Mean (Avg)	Std Dev	N	Number Out Of Range	
						1st Iteration	2nd Iteration
A	0.227	0.245	0.236	0.003	86	1	1
B	0.140	0.152	0.146	0.002	88	1	0
C	0.039	0.045	0.042	0.001	86	1	0
D	0.194	0.212	0.203	0.003	86	1	0
E	0.068	0.080	0.074	0.002	86	0	0

Notes: Z Score is your reported analytical result compared to the mean in terms of the standard deviation, calculated as (Result-Mean)/StddDev. The Parameter n is the number of results reported which are used to calculate the second iteration mean and standard deviation.

Florida Department of Law Enforcement

Alcohol Testing Program

BLOOD ALCOHOL PROFICIENCY INITIAL TEST OUTCOME REPORT

Proficiency Cycle: 25C1

Receive Results By: 05/05/2025

Method: GC

Analyst Name: Mulcahy, Casey

Your 25C1 Proficiency test outcome is: Satisfactory

Evaluation Procedure:

First Iteration: For each level, the qualified results reported by participating analysts and reference labs are pooled, the mean, standard deviation and acceptable range are calculated using truncation, and results outside the acceptable range are excluded from the second iteration.

Second iteration: The mean, standard deviation and acceptable range are recalculated using truncation, every analyst's qualified results are compared to the recalculated acceptable range, and every analyst is assigned an outcome for the proficiency cycle. All analysts with Results Outside Acceptable Range receive retest samples. The retest results are compared to the acceptable range established by the initial test and the retested analyst's outcome for the proficiency cycle is assigned based on the second comparison.

Test Type	Vial Level	Vial Number	Results #1 Reported	#1 Z Score	Results #2 Reported	#2 Z Score
I	D	1418	0.201	-0.667	0.203	0.000
I	E	1518	0.073	-0.500	0.074	0.000

Proficiency Cycle Statistics

Level	Lower Limit	Upper Limit	Mean (Avg)	Std Dev	N	Number Out Of Range	
						1st Iteration	2nd Iteration
A	0.227	0.245	0.236	0.003	86	1	1
B	0.140	0.152	0.146	0.002	88	1	0
C	0.039	0.045	0.042	0.001	86	1	0
D	0.194	0.212	0.203	0.003	86	1	0
E	0.068	0.080	0.074	0.002	86	0	0

Notes: Z Score is your reported analytical result compared to the mean in terms of the standard deviation, calculated as (Result-Mean)/StddDev. The Parameter n is the number of results reported which are used to calculate the second iteration mean and standard deviation.

Florida Department of Law Enforcement

Alcohol Testing Program

BLOOD ALCOHOL PROFICIENCY INITIAL TEST OUTCOME REPORT

Proficiency Cycle: 25C1

Receive Results By: 04/17/2025

Method: GC

Analyst Name: Nguyen, Bryan

Your 25C1 Proficiency test outcome is: Satisfactory

Evaluation Procedure:

First Iteration: For each level, the qualified results reported by participating analysts and reference labs are pooled, the mean, standard deviation and acceptable range are calculated using truncation, and results outside the acceptable range are excluded from the second iteration.

Second iteration: The mean, standard deviation and acceptable range are recalculated using truncation, every analyst's qualified results are compared to the recalculated acceptable range, and every analyst is assigned an outcome for the proficiency cycle. All analysts with Results Outside Acceptable Range receive retest samples. The retest results are compared to the acceptable range established by the initial test and the retested analyst's outcome for the proficiency cycle is assigned based on the second comparison.

Test Type	Vial Level	Vial Number	Results #1 Reported	#1 Z Score	Results #2 Reported	#2 Z Score
I	A	1119	0.242	2.000	0.242	2.000
I	B	1219	0.149	1.500	0.150	2.000

Proficiency Cycle Statistics

Level	Lower Limit	Upper Limit	Mean (Avg)	Std Dev	N	Number Out Of Range	
						1st Iteration	2nd Iteration
A	0.227	0.245	0.236	0.003	86	1	1
B	0.140	0.152	0.146	0.002	88	1	0
C	0.039	0.045	0.042	0.001	86	1	0
D	0.194	0.212	0.203	0.003	86	1	0
E	0.068	0.080	0.074	0.002	86	0	0

Notes: Z Score is your reported analytical result compared to the mean in terms of the standard deviation, calculated as (Result-Mean)/StddDev. The Parameter n is the number of results reported which are used to calculate the second iteration mean and standard deviation.

Florida Department of Law Enforcement

Alcohol Testing Program

BLOOD ALCOHOL PROFICIENCY INITIAL TEST OUTCOME REPORT

Proficiency Cycle: 25C1

Receive Results By: 04/25/2025

Method: GC

Analyst Name: Nolasco, Ever

Your 25C1 Proficiency test outcome is: Satisfactory

Evaluation Procedure:

First Iteration: For each level, the qualified results reported by participating analysts and reference labs are pooled, the mean, standard deviation and acceptable range are calculated using truncation, and results outside the acceptable range are excluded from the second iteration.

Second iteration: The mean, standard deviation and acceptable range are recalculated using truncation, every analyst's qualified results are compared to the recalculated acceptable range, and every analyst is assigned an outcome for the proficiency cycle. All analysts with Results Outside Acceptable Range receive retest samples. The retest results are compared to the acceptable range established by the initial test and the retested analyst's outcome for the proficiency cycle is assigned based on the second comparison.

Test Type	Vial Level	Vial Number	Results #1 Reported	#1 Z Score	Results #2 Reported	#2 Z Score
I	C	1318	0.042	0.000	0.043	1.000
I	D	1419	0.203	0.000	0.204	0.333

Proficiency Cycle Statistics

Level	Lower Limit	Upper Limit	Mean (Avg)	Std Dev	N	Number Out Of Range	
						1st Iteration	2nd Iteration
A	0.227	0.245	0.236	0.003	86	1	1
B	0.140	0.152	0.146	0.002	88	1	0
C	0.039	0.045	0.042	0.001	86	1	0
D	0.194	0.212	0.203	0.003	86	1	0
E	0.068	0.080	0.074	0.002	86	0	0

Notes: Z Score is your reported analytical result compared to the mean in terms of the standard deviation, calculated as (Result-Mean)/StddDev. The Parameter n is the number of results reported which are used to calculate the second iteration mean and standard deviation.

Florida Department of Law Enforcement

Alcohol Testing Program

BLOOD ALCOHOL PROFICIENCY INITIAL TEST OUTCOME REPORT

Proficiency Cycle: 25C1

Receive Results By: 04/25/2025

Method: GC

Analyst Name: Nolasco, Ever

Your 25C1 Proficiency test outcome is: Satisfactory

Evaluation Procedure:

First Iteration: For each level, the qualified results reported by participating analysts and reference labs are pooled, the mean, standard deviation and acceptable range are calculated using truncation, and results outside the acceptable range are excluded from the second iteration.

Second iteration: The mean, standard deviation and acceptable range are recalculated using truncation, every analyst's qualified results are compared to the recalculated acceptable range, and every analyst is assigned an outcome for the proficiency cycle. All analysts with Results Outside Acceptable Range receive retest samples. The retest results are compared to the acceptable range established by the initial test and the retested analyst's outcome for the proficiency cycle is assigned based on the second comparison.

Test Type	Vial Level	Vial Number	Results #1 Reported	#1 Z Score	Results #2 Reported	#2 Z Score
I	A	1120	0.232	-1.333	0.232	-1.333
I	E	1519	0.074	0.000	0.073	-0.500

Proficiency Cycle Statistics

Level	Lower Limit	Upper Limit	Mean (Avg)	Std Dev	N	Number Out Of Range	
						1st Iteration	2nd Iteration
A	0.227	0.245	0.236	0.003	86	1	1
B	0.140	0.152	0.146	0.002	88	1	0
C	0.039	0.045	0.042	0.001	86	1	0
D	0.194	0.212	0.203	0.003	86	1	0
E	0.068	0.080	0.074	0.002	86	0	0

Notes: Z Score is your reported analytical result compared to the mean in terms of the standard deviation, calculated as (Result-Mean)/StddDev. The Parameter n is the number of results reported which are used to calculate the second iteration mean and standard deviation.

Florida Department of Law Enforcement

Alcohol Testing Program

BLOOD ALCOHOL PROFICIENCY INITIAL TEST OUTCOME REPORT

Proficiency Cycle: 25C1

Receive Results By: 05/01/2025

Method: GC

Analyst Name: Office of the Attorney General, North Dakota

Your 25C1 Proficiency test outcome is: Satisfactory

Evaluation Procedure:

First Iteration: For each level, the qualified results reported by participating analysts and reference labs are pooled, the mean, standard deviation and acceptable range are calculated using truncation, and results outside the acceptable range are excluded from the second iteration.

Second iteration: The mean, standard deviation and acceptable range are recalculated using truncation, every analyst's qualified results are compared to the recalculated acceptable range, and every analyst is assigned an outcome for the proficiency cycle. All analysts with Results Outside Acceptable Range receive retest samples. The retest results are compared to the acceptable range established by the initial test and the retested analyst's outcome for the proficiency cycle is assigned based on the second comparison.

Test Type	Vial Level	Vial Number	Results #1 Reported	#1 Z Score	Results #2 Reported	#2 Z Score
I	A	1143	0.235	-0.333	0.233	-1.000
I	B	1243	0.141	-2.500	0.142	-2.000
I	C	1340	0.040	-2.000	0.040	-2.000
I	D	1442	0.199	-1.333	0.200	-1.000
I	E	1542	0.073	-0.500	0.073	-0.500

Proficiency Cycle Statistics

Level	Lower Limit	Upper Limit	Mean (Avg)	Std Dev	N	Number Out Of Range	
						1st Iteration	2nd Iteration
A	0.227	0.245	0.236	0.003	86	1	1
B	0.140	0.152	0.146	0.002	88	1	0
C	0.039	0.045	0.042	0.001	86	1	0
D	0.194	0.212	0.203	0.003	86	1	0
E	0.068	0.080	0.074	0.002	86	0	0

Notes: Z Score is your reported analytical result compared to the mean in terms of the standard deviation, calculated as (Result-Mean)/StddDev. The Parameter n is the number of results reported which are used to calculate the second iteration mean and standard deviation.

Florida Department of Law Enforcement

Alcohol Testing Program

BLOOD ALCOHOL PROFICIENCY INITIAL TEST OUTCOME REPORT

Proficiency Cycle: 25C1

Receive Results By: 04/29/2025

Method: GC

Analyst Name: Ogden, Katelyn

Your 25C1 Proficiency test outcome is: Satisfactory

Evaluation Procedure:

First Iteration: For each level, the qualified results reported by participating analysts and reference labs are pooled, the mean, standard deviation and acceptable range are calculated using truncation, and results outside the acceptable range are excluded from the second iteration.

Second iteration: The mean, standard deviation and acceptable range are recalculated using truncation, every analyst's qualified results are compared to the recalculated acceptable range, and every analyst is assigned an outcome for the proficiency cycle. All analysts with Results Outside Acceptable Range receive retest samples. The retest results are compared to the acceptable range established by the initial test and the retested analyst's outcome for the proficiency cycle is assigned based on the second comparison.

Test Type	Vial Level	Vial Number	Results #1 Reported	#1 Z Score	Results #2 Reported	#2 Z Score
I	B	1220	0.145	-0.500	0.146	0.000
I	C	1319	0.042	0.000	0.042	0.000

Proficiency Cycle Statistics

Level	Lower Limit	Upper Limit	Mean (Avg)	Std Dev	N	Number Out Of Range	
						1st Iteration	2nd Iteration
A	0.227	0.245	0.236	0.003	86	1	1
B	0.140	0.152	0.146	0.002	88	1	0
C	0.039	0.045	0.042	0.001	86	1	0
D	0.194	0.212	0.203	0.003	86	1	0
E	0.068	0.080	0.074	0.002	86	0	0

Notes: Z Score is your reported analytical result compared to the mean in terms of the standard deviation, calculated as (Result-Mean)/StddDev. The Parameter n is the number of results reported which are used to calculate the second iteration mean and standard deviation.

Florida Department of Law Enforcement

Alcohol Testing Program

BLOOD ALCOHOL PROFICIENCY INITIAL TEST OUTCOME REPORT

Proficiency Cycle: 25C1

Receive Results By: 04/29/2025

Method: GC

Analyst Name: Ogden, Katelyn

Your 25C1 Proficiency test outcome is: Satisfactory

Evaluation Procedure:

First Iteration: For each level, the qualified results reported by participating analysts and reference labs are pooled, the mean, standard deviation and acceptable range are calculated using truncation, and results outside the acceptable range are excluded from the second iteration.

Second iteration: The mean, standard deviation and acceptable range are recalculated using truncation, every analyst's qualified results are compared to the recalculated acceptable range, and every analyst is assigned an outcome for the proficiency cycle. All analysts with Results Outside Acceptable Range receive retest samples. The retest results are compared to the acceptable range established by the initial test and the retested analyst's outcome for the proficiency cycle is assigned based on the second comparison.

Test Type	Vial Level	Vial Number	Results #1 Reported	#1 Z Score	Results #2 Reported	#2 Z Score
I	D	1420	0.201	-0.667	0.202	-0.333
I	E	1520	0.073	-0.500	0.074	0.000

Proficiency Cycle Statistics

Level	Lower Limit	Upper Limit	Mean (Avg)	Std Dev	N	Number Out Of Range	
						1st Iteration	2nd Iteration
A	0.227	0.245	0.236	0.003	86	1	1
B	0.140	0.152	0.146	0.002	88	1	0
C	0.039	0.045	0.042	0.001	86	1	0
D	0.194	0.212	0.203	0.003	86	1	0
E	0.068	0.080	0.074	0.002	86	0	0

Notes: Z Score is your reported analytical result compared to the mean in terms of the standard deviation, calculated as (Result-Mean)/StddDev. The Parameter n is the number of results reported which are used to calculate the second iteration mean and standard deviation.

Florida Department of Law Enforcement

Alcohol Testing Program

BLOOD ALCOHOL PROFICIENCY INITIAL TEST OUTCOME REPORT

Proficiency Cycle: 25C1

Receive Results By: 04/23/2025

Method: GC

Analyst Name: Ouellette, Nancy

Your 25C1 Proficiency test outcome is: Satisfactory

Evaluation Procedure:

First Iteration: For each level, the qualified results reported by participating analysts and reference labs are pooled, the mean, standard deviation and acceptable range are calculated using truncation, and results outside the acceptable range are excluded from the second iteration.

Second iteration: The mean, standard deviation and acceptable range are recalculated using truncation, every analyst's qualified results are compared to the recalculated acceptable range, and every analyst is assigned an outcome for the proficiency cycle. All analysts with Results Outside Acceptable Range receive retest samples. The retest results are compared to the acceptable range established by the initial test and the retested analyst's outcome for the proficiency cycle is assigned based on the second comparison.

Test Type	Vial Level	Vial Number	Results #1 Reported	#1 Z Score	Results #2 Reported	#2 Z Score
I	A	1144	0.243	2.333	0.244	2.667
I	B	1244	0.148	1.000	0.149	1.500
I	C	1343	0.042	0.000	0.042	0.000
I	D	1443	0.209	2.000	0.211	2.667
I	E	1543	0.074	0.000	0.074	0.000

Proficiency Cycle Statistics

Level	Lower Limit	Upper Limit	Mean (Avg)	Std Dev	N	Number Out Of Range	
						1st Iteration	2nd Iteration
A	0.227	0.245	0.236	0.003	86	1	1
B	0.140	0.152	0.146	0.002	88	1	0
C	0.039	0.045	0.042	0.001	86	1	0
D	0.194	0.212	0.203	0.003	86	1	0
E	0.068	0.080	0.074	0.002	86	0	0

Notes: Z Score is your reported analytical result compared to the mean in terms of the standard deviation, calculated as (Result-Mean)/StddDev. The Parameter n is the number of results reported which are used to calculate the second iteration mean and standard deviation.

Florida Department of Law Enforcement

Alcohol Testing Program

BLOOD ALCOHOL PROFICIENCY INITIAL TEST OUTCOME REPORT

Proficiency Cycle: 25C1

Receive Results By: 04/30/2025

Method: GC

Analyst Name: Pacheco, Jamie

Your 25C1 Proficiency test outcome is: Satisfactory

Evaluation Procedure:

First Iteration: For each level, the qualified results reported by participating analysts and reference labs are pooled, the mean, standard deviation and acceptable range are calculated using truncation, and results outside the acceptable range are excluded from the second iteration.

Second iteration: The mean, standard deviation and acceptable range are recalculated using truncation, every analyst's qualified results are compared to the recalculated acceptable range, and every analyst is assigned an outcome for the proficiency cycle. All analysts with Results Outside Acceptable Range receive retest samples. The retest results are compared to the acceptable range established by the initial test and the retested analyst's outcome for the proficiency cycle is assigned based on the second comparison.

Test Type	Vial Level	Vial Number	Results #1 Reported	#1 Z Score	Results #2 Reported	#2 Z Score
I	A	1121	0.237	0.333	0.238	0.667
I	B	1221	0.146	0.000	0.145	-0.500

Proficiency Cycle Statistics

Level	Lower Limit	Upper Limit	Mean (Avg)	Std Dev	N	Number Out Of Range	
						1st Iteration	2nd Iteration
A	0.227	0.245	0.236	0.003	86	1	1
B	0.140	0.152	0.146	0.002	88	1	0
C	0.039	0.045	0.042	0.001	86	1	0
D	0.194	0.212	0.203	0.003	86	1	0
E	0.068	0.080	0.074	0.002	86	0	0

Notes: Z Score is your reported analytical result compared to the mean in terms of the standard deviation, calculated as (Result-Mean)/StddDev. The Parameter n is the number of results reported which are used to calculate the second iteration mean and standard deviation.

Florida Department of Law Enforcement

Alcohol Testing Program

BLOOD ALCOHOL PROFICIENCY INITIAL TEST OUTCOME REPORT

Proficiency Cycle: 25C1

Receive Results By: 04/30/2025

Method: GC

Analyst Name: Pacheco, Jamie

Your 25C1 Proficiency test outcome is: Satisfactory

Evaluation Procedure:

First Iteration: For each level, the qualified results reported by participating analysts and reference labs are pooled, the mean, standard deviation and acceptable range are calculated using truncation, and results outside the acceptable range are excluded from the second iteration.

Second iteration: The mean, standard deviation and acceptable range are recalculated using truncation, every analyst's qualified results are compared to the recalculated acceptable range, and every analyst is assigned an outcome for the proficiency cycle. All analysts with Results Outside Acceptable Range receive retest samples. The retest results are compared to the acceptable range established by the initial test and the retested analyst's outcome for the proficiency cycle is assigned based on the second comparison.

Test Type	Vial Level	Vial Number	Results #1 Reported	#1 Z Score	Results #2 Reported	#2 Z Score
I	C	1321	0.042	0.000	0.042	0.000
I	D	1421	0.203	0.000	0.202	-0.333

Proficiency Cycle Statistics

Level	Lower Limit	Upper Limit	Mean (Avg)	Std Dev	N	Number Out Of Range	
						1st Iteration	2nd Iteration
A	0.227	0.245	0.236	0.003	86	1	1
B	0.140	0.152	0.146	0.002	88	1	0
C	0.039	0.045	0.042	0.001	86	1	0
D	0.194	0.212	0.203	0.003	86	1	0
E	0.068	0.080	0.074	0.002	86	0	0

Notes: Z Score is your reported analytical result compared to the mean in terms of the standard deviation, calculated as (Result-Mean)/StddDev. The Parameter n is the number of results reported which are used to calculate the second iteration mean and standard deviation.

Florida Department of Law Enforcement

Alcohol Testing Program

BLOOD ALCOHOL PROFICIENCY INITIAL TEST OUTCOME REPORT

Proficiency Cycle: 25C1

Receive Results By: 05/06/2025

Method: GC

Analyst Name: Patel, Minakshi

Your 25C1 Proficiency test outcome is: Satisfactory

Evaluation Procedure:

First Iteration: For each level, the qualified results reported by participating analysts and reference labs are pooled, the mean, standard deviation and acceptable range are calculated using truncation, and results outside the acceptable range are excluded from the second iteration.

Second iteration: The mean, standard deviation and acceptable range are recalculated using truncation, every analyst's qualified results are compared to the recalculated acceptable range, and every analyst is assigned an outcome for the proficiency cycle. All analysts with Results Outside Acceptable Range receive retest samples. The retest results are compared to the acceptable range established by the initial test and the retested analyst's outcome for the proficiency cycle is assigned based on the second comparison.

Test Type	Vial Level	Vial Number	Results #1 Reported	#1 Z Score	Results #2 Reported	#2 Z Score
I	A	1122	0.232	-1.333	0.234	-0.667
I	E	1521	0.072	-1.000	0.072	-1.000

Proficiency Cycle Statistics

Level	Lower Limit	Upper Limit	Mean (Avg)	Std Dev	N	Number Out Of Range	
						1st Iteration	2nd Iteration
A	0.227	0.245	0.236	0.003	86	1	1
B	0.140	0.152	0.146	0.002	88	1	0
C	0.039	0.045	0.042	0.001	86	1	0
D	0.194	0.212	0.203	0.003	86	1	0
E	0.068	0.080	0.074	0.002	86	0	0

Notes: Z Score is your reported analytical result compared to the mean in terms of the standard deviation, calculated as (Result-Mean)/StddDev. The Parameter n is the number of results reported which are used to calculate the second iteration mean and standard deviation.

Florida Department of Law Enforcement

Alcohol Testing Program

BLOOD ALCOHOL PROFICIENCY INITIAL TEST OUTCOME REPORT

Proficiency Cycle: 25C1

Receive Results By: 05/12/2025

Method: GC

Analyst Name: Pilacik, Faith

Your 25C1 Proficiency test outcome is: Satisfactory

Evaluation Procedure:

First Iteration: For each level, the qualified results reported by participating analysts and reference labs are pooled, the mean, standard deviation and acceptable range are calculated using truncation, and results outside the acceptable range are excluded from the second iteration.

Second iteration: The mean, standard deviation and acceptable range are recalculated using truncation, every analyst's qualified results are compared to the recalculated acceptable range, and every analyst is assigned an outcome for the proficiency cycle. All analysts with Results Outside Acceptable Range receive retest samples. The retest results are compared to the acceptable range established by the initial test and the retested analyst's outcome for the proficiency cycle is assigned based on the second comparison.

Test Type	Vial Level	Vial Number	Results #1 Reported	#1 Z Score	Results #2 Reported	#2 Z Score
I	A	1139	0.235	-0.333	0.235	-0.333
I	B	1239	0.143	-1.500	0.144	-1.000
I	C	1338	0.040	-2.000	0.041	-1.000
I	D	1438	0.204	0.333	0.203	0.000
I	E	1538	0.072	-1.000	0.073	-0.500

Proficiency Cycle Statistics

Level	Lower Limit	Upper Limit	Mean (Avg)	Std Dev	N	Number Out Of Range	
						1st Iteration	2nd Iteration
A	0.227	0.245	0.236	0.003	86	1	1
B	0.140	0.152	0.146	0.002	88	1	0
C	0.039	0.045	0.042	0.001	86	1	0
D	0.194	0.212	0.203	0.003	86	1	0
E	0.068	0.080	0.074	0.002	86	0	0

Notes: Z Score is your reported analytical result compared to the mean in terms of the standard deviation, calculated as (Result-Mean)/StddDev. The Parameter n is the number of results reported which are used to calculate the second iteration mean and standard deviation.

Florida Department of Law Enforcement

Alcohol Testing Program

BLOOD ALCOHOL PROFICIENCY INITIAL TEST OUTCOME REPORT

Proficiency Cycle: 25C1

Receive Results By: 05/12/2025

Method: GC

Analyst Name: Pilacik, Faith

Your 25C1 Proficiency test outcome is: Satisfactory

Evaluation Procedure:

First Iteration: For each level, the qualified results reported by participating analysts and reference labs are pooled, the mean, standard deviation and acceptable range are calculated using truncation, and results outside the acceptable range are excluded from the second iteration.

Second iteration: The mean, standard deviation and acceptable range are recalculated using truncation, every analyst's qualified results are compared to the recalculated acceptable range, and every analyst is assigned an outcome for the proficiency cycle. All analysts with Results Outside Acceptable Range receive retest samples. The retest results are compared to the acceptable range established by the initial test and the retested analyst's outcome for the proficiency cycle is assigned based on the second comparison.

Test Type	Vial Level	Vial Number	Results #1 Reported	#1 Z Score	Results #2 Reported	#2 Z Score
I	A	1138	0.238	0.667	0.234	-0.667
I	B	1238	0.144	-1.000	0.145	-0.500
I	C	1337	0.041	-1.000	0.041	-1.000
I	D	1437	0.203	0.000	0.203	0.000
I	E	1537	0.072	-1.000	0.072	-1.000

Proficiency Cycle Statistics

Level	Lower Limit	Upper Limit	Mean (Avg)	Std Dev	N	Number Out Of Range	
						1st Iteration	2nd Iteration
A	0.227	0.245	0.236	0.003	86	1	1
B	0.140	0.152	0.146	0.002	88	1	0
C	0.039	0.045	0.042	0.001	86	1	0
D	0.194	0.212	0.203	0.003	86	1	0
E	0.068	0.080	0.074	0.002	86	0	0

Notes: Z Score is your reported analytical result compared to the mean in terms of the standard deviation, calculated as (Result-Mean)/StddDev. The Parameter n is the number of results reported which are used to calculate the second iteration mean and standard deviation.

Florida Department of Law Enforcement

Alcohol Testing Program

BLOOD ALCOHOL PROFICIENCY INITIAL TEST OUTCOME REPORT

Proficiency Cycle: 25C1

Receive Results By: 04/28/2025

Method: GC

Analyst Name: Placencia, Leonela

Your 25C1 Proficiency test outcome is: Satisfactory

Evaluation Procedure:

First Iteration: For each level, the qualified results reported by participating analysts and reference labs are pooled, the mean, standard deviation and acceptable range are calculated using truncation, and results outside the acceptable range are excluded from the second iteration.

Second iteration: The mean, standard deviation and acceptable range are recalculated using truncation, every analyst's qualified results are compared to the recalculated acceptable range, and every analyst is assigned an outcome for the proficiency cycle. All analysts with Results Outside Acceptable Range receive retest samples. The retest results are compared to the acceptable range established by the initial test and the retested analyst's outcome for the proficiency cycle is assigned based on the second comparison.

Test Type	Vial Level	Vial Number	Results #1 Reported	#1 Z Score	Results #2 Reported	#2 Z Score
I	B	1222	0.145	-0.500	0.145	-0.500
I	C	1322	0.043	1.000	0.043	1.000

Proficiency Cycle Statistics

Level	Lower Limit	Upper Limit	Mean (Avg)	Std Dev	N	Number Out Of Range	
						1st Iteration	2nd Iteration
A	0.227	0.245	0.236	0.003	86	1	1
B	0.140	0.152	0.146	0.002	88	1	0
C	0.039	0.045	0.042	0.001	86	1	0
D	0.194	0.212	0.203	0.003	86	1	0
E	0.068	0.080	0.074	0.002	86	0	0

Notes: Z Score is your reported analytical result compared to the mean in terms of the standard deviation, calculated as (Result-Mean)/StddDev. The Parameter n is the number of results reported which are used to calculate the second iteration mean and standard deviation.

Florida Department of Law Enforcement

Alcohol Testing Program

BLOOD ALCOHOL PROFICIENCY INITIAL TEST OUTCOME REPORT

Proficiency Cycle: 25C1

Receive Results By: 04/22/2025

Method: GC

Analyst Name: Potoukian, Rocio

Your 25C1 Proficiency test outcome is: Satisfactory

Evaluation Procedure:

First Iteration: For each level, the qualified results reported by participating analysts and reference labs are pooled, the mean, standard deviation and acceptable range are calculated using truncation, and results outside the acceptable range are excluded from the second iteration.

Second iteration: The mean, standard deviation and acceptable range are recalculated using truncation, every analyst's qualified results are compared to the recalculated acceptable range, and every analyst is assigned an outcome for the proficiency cycle. All analysts with Results Outside Acceptable Range receive retest samples. The retest results are compared to the acceptable range established by the initial test and the retested analyst's outcome for the proficiency cycle is assigned based on the second comparison.

Test Type	Vial Level	Vial Number	Results #1 Reported	#1 Z Score	Results #2 Reported	#2 Z Score
I	D	1422	0.199	-1.333	0.201	-0.667
I	E	1522	0.075	0.500	0.074	0.000

Proficiency Cycle Statistics

Level	Lower Limit	Upper Limit	Mean (Avg)	Std Dev	N	Number Out Of Range	
						1st Iteration	2nd Iteration
A	0.227	0.245	0.236	0.003	86	1	1
B	0.140	0.152	0.146	0.002	88	1	0
C	0.039	0.045	0.042	0.001	86	1	0
D	0.194	0.212	0.203	0.003	86	1	0
E	0.068	0.080	0.074	0.002	86	0	0

Notes: Z Score is your reported analytical result compared to the mean in terms of the standard deviation, calculated as (Result-Mean)/StddDev. The Parameter n is the number of results reported which are used to calculate the second iteration mean and standard deviation.

Florida Department of Law Enforcement

Alcohol Testing Program

BLOOD ALCOHOL PROFICIENCY INITIAL TEST OUTCOME REPORT

Proficiency Cycle: 25C1

Receive Results By: 04/24/2025

Method: GC

Analyst Name: Quinney, Elden

Your 25C1 Proficiency test outcome is: Satisfactory

Evaluation Procedure:

First Iteration: For each level, the qualified results reported by participating analysts and reference labs are pooled, the mean, standard deviation and acceptable range are calculated using truncation, and results outside the acceptable range are excluded from the second iteration.

Second iteration: The mean, standard deviation and acceptable range are recalculated using truncation, every analyst's qualified results are compared to the recalculated acceptable range, and every analyst is assigned an outcome for the proficiency cycle. All analysts with Results Outside Acceptable Range receive retest samples. The retest results are compared to the acceptable range established by the initial test and the retested analyst's outcome for the proficiency cycle is assigned based on the second comparison.

Test Type	Vial Level	Vial Number	Results #1 Reported	#1 Z Score	Results #2 Reported	#2 Z Score
I	A	1123	0.240	1.333	0.241	1.667
I	B	1223	0.144	-1.000	0.145	-0.500

Proficiency Cycle Statistics

Level	Lower Limit	Upper Limit	Mean (Avg)	Std Dev	N	Number Out Of Range	
						1st Iteration	2nd Iteration
A	0.227	0.245	0.236	0.003	86	1	1
B	0.140	0.152	0.146	0.002	88	1	0
C	0.039	0.045	0.042	0.001	86	1	0
D	0.194	0.212	0.203	0.003	86	1	0
E	0.068	0.080	0.074	0.002	86	0	0

Notes: Z Score is your reported analytical result compared to the mean in terms of the standard deviation, calculated as (Result-Mean)/StddDev. The Parameter n is the number of results reported which are used to calculate the second iteration mean and standard deviation.

Florida Department of Law Enforcement

Alcohol Testing Program

BLOOD ALCOHOL PROFICIENCY INITIAL TEST OUTCOME REPORT

Proficiency Cycle: 25C1

Receive Results By: 05/02/2025

Method: GC

Analyst Name: Raymonvil, Wilsa

Your 25C1 Proficiency test outcome is: Satisfactory

Evaluation Procedure:

First Iteration: For each level, the qualified results reported by participating analysts and reference labs are pooled, the mean, standard deviation and acceptable range are calculated using truncation, and results outside the acceptable range are excluded from the second iteration.

Second iteration: The mean, standard deviation and acceptable range are recalculated using truncation, every analyst's qualified results are compared to the recalculated acceptable range, and every analyst is assigned an outcome for the proficiency cycle. All analysts with Results Outside Acceptable Range receive retest samples. The retest results are compared to the acceptable range established by the initial test and the retested analyst's outcome for the proficiency cycle is assigned based on the second comparison.

Test Type	Vial Level	Vial Number	Results #1 Reported	#1 Z Score	Results #2 Reported	#2 Z Score
I	C	1323	0.042	0.000	0.042	0.000
I	D	1423	0.202	-0.333	0.203	0.000

Proficiency Cycle Statistics

Level	Lower Limit	Upper Limit	Mean (Avg)	Std Dev	N	Number Out Of Range	
						1st Iteration	2nd Iteration
A	0.227	0.245	0.236	0.003	86	1	1
B	0.140	0.152	0.146	0.002	88	1	0
C	0.039	0.045	0.042	0.001	86	1	0
D	0.194	0.212	0.203	0.003	86	1	0
E	0.068	0.080	0.074	0.002	86	0	0

Notes: Z Score is your reported analytical result compared to the mean in terms of the standard deviation, calculated as (Result-Mean)/StddDev. The Parameter n is the number of results reported which are used to calculate the second iteration mean and standard deviation.

Florida Department of Law Enforcement

Alcohol Testing Program

BLOOD ALCOHOL PROFICIENCY INITIAL TEST OUTCOME REPORT

Proficiency Cycle: 25C1

Receive Results By: 05/09/2025

Method: GC

Analyst Name: Reidy, Lisa

Your 25C1 Proficiency test outcome is: Satisfactory

Evaluation Procedure:

First Iteration: For each level, the qualified results reported by participating analysts and reference labs are pooled, the mean, standard deviation and acceptable range are calculated using truncation, and results outside the acceptable range are excluded from the second iteration.

Second iteration: The mean, standard deviation and acceptable range are recalculated using truncation, every analyst's qualified results are compared to the recalculated acceptable range, and every analyst is assigned an outcome for the proficiency cycle. All analysts with Results Outside Acceptable Range receive retest samples. The retest results are compared to the acceptable range established by the initial test and the retested analyst's outcome for the proficiency cycle is assigned based on the second comparison.

Test Type	Vial Level	Vial Number	Results #1 Reported	#1 Z Score	Results #2 Reported	#2 Z Score
I	A	1124	0.234	-0.667	0.234	-0.667
I	E	1523	0.072	-1.000	0.072	-1.000

Proficiency Cycle Statistics

Level	Lower Limit	Upper Limit	Mean (Avg)	Std Dev	N	Number Out Of Range	
						1st Iteration	2nd Iteration
A	0.227	0.245	0.236	0.003	86	1	1
B	0.140	0.152	0.146	0.002	88	1	0
C	0.039	0.045	0.042	0.001	86	1	0
D	0.194	0.212	0.203	0.003	86	1	0
E	0.068	0.080	0.074	0.002	86	0	0

Notes: Z Score is your reported analytical result compared to the mean in terms of the standard deviation, calculated as (Result-Mean)/StddDev. The Parameter n is the number of results reported which are used to calculate the second iteration mean and standard deviation.

Florida Department of Law Enforcement

Alcohol Testing Program

BLOOD ALCOHOL PROFICIENCY INITIAL TEST OUTCOME REPORT

Proficiency Cycle: 25C1

Receive Results By: 05/08/2025

Method: GC

Analyst Name: Reidy, Lisa

Your 25C1 Proficiency test outcome is: Satisfactory

Evaluation Procedure:

First Iteration: For each level, the qualified results reported by participating analysts and reference labs are pooled, the mean, standard deviation and acceptable range are calculated using truncation, and results outside the acceptable range are excluded from the second iteration.

Second iteration: The mean, standard deviation and acceptable range are recalculated using truncation, every analyst's qualified results are compared to the recalculated acceptable range, and every analyst is assigned an outcome for the proficiency cycle. All analysts with Results Outside Acceptable Range receive retest samples. The retest results are compared to the acceptable range established by the initial test and the retested analyst's outcome for the proficiency cycle is assigned based on the second comparison.

Test Type	Vial Level	Vial Number	Results #1 Reported	#1 Z Score	Results #2 Reported	#2 Z Score
I	B	1224	0.142	-2.000	0.144	-1.000
I	C	1324	0.040	-2.000	0.040	-2.000

Proficiency Cycle Statistics

Level	Lower Limit	Upper Limit	Mean (Avg)	Std Dev	N	Number Out Of Range	
						1st Iteration	2nd Iteration
A	0.227	0.245	0.236	0.003	86	1	1
B	0.140	0.152	0.146	0.002	88	1	0
C	0.039	0.045	0.042	0.001	86	1	0
D	0.194	0.212	0.203	0.003	86	1	0
E	0.068	0.080	0.074	0.002	86	0	0

Notes: Z Score is your reported analytical result compared to the mean in terms of the standard deviation, calculated as (Result-Mean)/StddDev. The Parameter n is the number of results reported which are used to calculate the second iteration mean and standard deviation.

Florida Department of Law Enforcement

Alcohol Testing Program

BLOOD ALCOHOL PROFICIENCY INITIAL TEST OUTCOME REPORT

Proficiency Cycle: 25C1

Receive Results By: 05/05/2025

Method: GC

Analyst Name: Rohe, Lisa

Your 25C1 Proficiency test outcome is: Satisfactory

Evaluation Procedure:

First Iteration: For each level, the qualified results reported by participating analysts and reference labs are pooled, the mean, standard deviation and acceptable range are calculated using truncation, and results outside the acceptable range are excluded from the second iteration.

Second iteration: The mean, standard deviation and acceptable range are recalculated using truncation, every analyst's qualified results are compared to the recalculated acceptable range, and every analyst is assigned an outcome for the proficiency cycle. All analysts with Results Outside Acceptable Range receive retest samples. The retest results are compared to the acceptable range established by the initial test and the retested analyst's outcome for the proficiency cycle is assigned based on the second comparison.

Test Type	Vial Level	Vial Number	Results #1 Reported	#1 Z Score	Results #2 Reported	#2 Z Score
I	D	1424	0.202	-0.333	0.199	-1.333
I	E	1524	0.073	-0.500	0.073	-0.500

Proficiency Cycle Statistics

Level	Lower Limit	Upper Limit	Mean (Avg)	Std Dev	N	Number Out Of Range	
						1st Iteration	2nd Iteration
A	0.227	0.245	0.236	0.003	86	1	1
B	0.140	0.152	0.146	0.002	88	1	0
C	0.039	0.045	0.042	0.001	86	1	0
D	0.194	0.212	0.203	0.003	86	1	0
E	0.068	0.080	0.074	0.002	86	0	0

Notes: Z Score is your reported analytical result compared to the mean in terms of the standard deviation, calculated as (Result-Mean)/StddDev. The Parameter n is the number of results reported which are used to calculate the second iteration mean and standard deviation.

Florida Department of Law Enforcement

Alcohol Testing Program

BLOOD ALCOHOL PROFICIENCY INITIAL TEST OUTCOME REPORT

Proficiency Cycle: 25C1

Receive Results By: 05/05/2025

Method: GC

Analyst Name: Rohe, Lisa

Your 25C1 Proficiency test outcome is: Satisfactory

Evaluation Procedure:

First Iteration: For each level, the qualified results reported by participating analysts and reference labs are pooled, the mean, standard deviation and acceptable range are calculated using truncation, and results outside the acceptable range are excluded from the second iteration.

Second iteration: The mean, standard deviation and acceptable range are recalculated using truncation, every analyst's qualified results are compared to the recalculated acceptable range, and every analyst is assigned an outcome for the proficiency cycle. All analysts with Results Outside Acceptable Range receive retest samples. The retest results are compared to the acceptable range established by the initial test and the retested analyst's outcome for the proficiency cycle is assigned based on the second comparison.

Test Type	Vial Level	Vial Number	Results #1 Reported	#1 Z Score	Results #2 Reported	#2 Z Score
I	A	1125	0.234	-0.667	0.235	-0.333
I	B	1225	0.146	0.000	0.145	-0.500

Proficiency Cycle Statistics

Level	Lower Limit	Upper Limit	Mean (Avg)	Std Dev	N	Number Out Of Range	
						1st Iteration	2nd Iteration
A	0.227	0.245	0.236	0.003	86	1	1
B	0.140	0.152	0.146	0.002	88	1	0
C	0.039	0.045	0.042	0.001	86	1	0
D	0.194	0.212	0.203	0.003	86	1	0
E	0.068	0.080	0.074	0.002	86	0	0

Notes: Z Score is your reported analytical result compared to the mean in terms of the standard deviation, calculated as (Result-Mean)/StddDev. The Parameter n is the number of results reported which are used to calculate the second iteration mean and standard deviation.

Florida Department of Law Enforcement

Alcohol Testing Program

BLOOD ALCOHOL PROFICIENCY INITIAL TEST OUTCOME REPORT

Proficiency Cycle: 25C1

Receive Results By: 04/19/2025

Method: GC

Analyst Name: Rush, Courtney

Your 25C1 Proficiency test outcome is: Satisfactory

Evaluation Procedure:

First Iteration: For each level, the qualified results reported by participating analysts and reference labs are pooled, the mean, standard deviation and acceptable range are calculated using truncation, and results outside the acceptable range are excluded from the second iteration.

Second iteration: The mean, standard deviation and acceptable range are recalculated using truncation, every analyst's qualified results are compared to the recalculated acceptable range, and every analyst is assigned an outcome for the proficiency cycle. All analysts with Results Outside Acceptable Range receive retest samples. The retest results are compared to the acceptable range established by the initial test and the retested analyst's outcome for the proficiency cycle is assigned based on the second comparison.

Test Type	Vial Level	Vial Number	Results #1 Reported	#1 Z Score	Results #2 Reported	#2 Z Score
I	C	1325	0.042	0.000	0.043	1.000
I	D	1425	0.201	-0.667	0.199	-1.333

Proficiency Cycle Statistics

Level	Lower Limit	Upper Limit	Mean (Avg)	Std Dev	N	Number Out Of Range	
						1st Iteration	2nd Iteration
A	0.227	0.245	0.236	0.003	86	1	1
B	0.140	0.152	0.146	0.002	88	1	0
C	0.039	0.045	0.042	0.001	86	1	0
D	0.194	0.212	0.203	0.003	86	1	0
E	0.068	0.080	0.074	0.002	86	0	0

Notes: Z Score is your reported analytical result compared to the mean in terms of the standard deviation, calculated as (Result-Mean)/StddDev. The Parameter n is the number of results reported which are used to calculate the second iteration mean and standard deviation.

Florida Department of Law Enforcement

Alcohol Testing Program

BLOOD ALCOHOL PROFICIENCY INITIAL TEST OUTCOME REPORT

Proficiency Cycle: 25C1

Receive Results By: 05/05/2025

Method: GC

Analyst Name: Sanders, Leeona

Your 25C1 Proficiency test outcome is: Satisfactory

Evaluation Procedure:

First Iteration: For each level, the qualified results reported by participating analysts and reference labs are pooled, the mean, standard deviation and acceptable range are calculated using truncation, and results outside the acceptable range are excluded from the second iteration.

Second iteration: The mean, standard deviation and acceptable range are recalculated using truncation, every analyst's qualified results are compared to the recalculated acceptable range, and every analyst is assigned an outcome for the proficiency cycle. All analysts with Results Outside Acceptable Range receive retest samples. The retest results are compared to the acceptable range established by the initial test and the retested analyst's outcome for the proficiency cycle is assigned based on the second comparison.

Test Type	Vial Level	Vial Number	Results #1 Reported	#1 Z Score	Results #2 Reported	#2 Z Score
I	A	1126	0.234	-0.667	0.237	0.333
I	E	1525	0.073	-0.500	0.073	-0.500

Proficiency Cycle Statistics

Level	Lower Limit	Upper Limit	Mean (Avg)	Std Dev	N	Number Out Of Range	
						1st Iteration	2nd Iteration
A	0.227	0.245	0.236	0.003	86	1	1
B	0.140	0.152	0.146	0.002	88	1	0
C	0.039	0.045	0.042	0.001	86	1	0
D	0.194	0.212	0.203	0.003	86	1	0
E	0.068	0.080	0.074	0.002	86	0	0

Notes: Z Score is your reported analytical result compared to the mean in terms of the standard deviation, calculated as (Result-Mean)/StddDev. The Parameter n is the number of results reported which are used to calculate the second iteration mean and standard deviation.

Florida Department of Law Enforcement

Alcohol Testing Program

BLOOD ALCOHOL PROFICIENCY INITIAL TEST OUTCOME REPORT

Proficiency Cycle: 25C1

Receive Results By: 05/05/2025

Method: GC

Analyst Name: Sanders, Leeona

Your 25C1 Proficiency test outcome is: Satisfactory

Evaluation Procedure:

First Iteration: For each level, the qualified results reported by participating analysts and reference labs are pooled, the mean, standard deviation and acceptable range are calculated using truncation, and results outside the acceptable range are excluded from the second iteration.

Second iteration: The mean, standard deviation and acceptable range are recalculated using truncation, every analyst's qualified results are compared to the recalculated acceptable range, and every analyst is assigned an outcome for the proficiency cycle. All analysts with Results Outside Acceptable Range receive retest samples. The retest results are compared to the acceptable range established by the initial test and the retested analyst's outcome for the proficiency cycle is assigned based on the second comparison.

Test Type	Vial Level	Vial Number	Results #1 Reported	#1 Z Score	Results #2 Reported	#2 Z Score
I	B	1226	0.144	-1.000	0.145	-0.500
I	C	1326	0.042	0.000	0.042	0.000

Proficiency Cycle Statistics

Level	Lower Limit	Upper Limit	Mean (Avg)	Std Dev	N	Number Out Of Range	
						1st Iteration	2nd Iteration
A	0.227	0.245	0.236	0.003	86	1	1
B	0.140	0.152	0.146	0.002	88	1	0
C	0.039	0.045	0.042	0.001	86	1	0
D	0.194	0.212	0.203	0.003	86	1	0
E	0.068	0.080	0.074	0.002	86	0	0

Notes: Z Score is your reported analytical result compared to the mean in terms of the standard deviation, calculated as (Result-Mean)/StddDev. The Parameter n is the number of results reported which are used to calculate the second iteration mean and standard deviation.

Florida Department of Law Enforcement

Alcohol Testing Program

BLOOD ALCOHOL PROFICIENCY INITIAL TEST OUTCOME REPORT

Proficiency Cycle: 25C1

Receive Results By: 05/02/2025

Method: GC

Analyst Name: Seagle, Carol

Your 25C1 Proficiency test outcome is: Satisfactory

Evaluation Procedure:

First Iteration: For each level, the qualified results reported by participating analysts and reference labs are pooled, the mean, standard deviation and acceptable range are calculated using truncation, and results outside the acceptable range are excluded from the second iteration.

Second iteration: The mean, standard deviation and acceptable range are recalculated using truncation, every analyst's qualified results are compared to the recalculated acceptable range, and every analyst is assigned an outcome for the proficiency cycle. All analysts with Results Outside Acceptable Range receive retest samples. The retest results are compared to the acceptable range established by the initial test and the retested analyst's outcome for the proficiency cycle is assigned based on the second comparison.

Test Type	Vial Level	Vial Number	Results #1 Reported	#1 Z Score	Results #2 Reported	#2 Z Score
I	D	1426	0.205	0.667	0.206	1.000
I	E	1526	0.075	0.500	0.075	0.500

Proficiency Cycle Statistics

Level	Lower Limit	Upper Limit	Mean (Avg)	Std Dev	N	Number Out Of Range	
						1st Iteration	2nd Iteration
A	0.227	0.245	0.236	0.003	86	1	1
B	0.140	0.152	0.146	0.002	88	1	0
C	0.039	0.045	0.042	0.001	86	1	0
D	0.194	0.212	0.203	0.003	86	1	0
E	0.068	0.080	0.074	0.002	86	0	0

Notes: Z Score is your reported analytical result compared to the mean in terms of the standard deviation, calculated as (Result-Mean)/StddDev. The Parameter n is the number of results reported which are used to calculate the second iteration mean and standard deviation.

Florida Department of Law Enforcement

Alcohol Testing Program

BLOOD ALCOHOL PROFICIENCY INITIAL TEST OUTCOME REPORT

Proficiency Cycle: 25C1

Receive Results By: 04/16/2025

Method: GC

Analyst Name: Seagle, Carol

Your 25C1 Proficiency test outcome is: Satisfactory

Evaluation Procedure:

First Iteration: For each level, the qualified results reported by participating analysts and reference labs are pooled, the mean, standard deviation and acceptable range are calculated using truncation, and results outside the acceptable range are excluded from the second iteration.

Second iteration: The mean, standard deviation and acceptable range are recalculated using truncation, every analyst's qualified results are compared to the recalculated acceptable range, and every analyst is assigned an outcome for the proficiency cycle. All analysts with Results Outside Acceptable Range receive retest samples. The retest results are compared to the acceptable range established by the initial test and the retested analyst's outcome for the proficiency cycle is assigned based on the second comparison.

Test Type	Vial Level	Vial Number	Results #1 Reported	#1 Z Score	Results #2 Reported	#2 Z Score
I	A	1127	0.238	0.667	0.236	0.000
I	B	1227	0.147	0.500	0.147	0.500

Proficiency Cycle Statistics

Level	Lower Limit	Upper Limit	Mean (Avg)	Std Dev	N	Number Out Of Range	
						1st Iteration	2nd Iteration
A	0.227	0.245	0.236	0.003	86	1	1
B	0.140	0.152	0.146	0.002	88	1	0
C	0.039	0.045	0.042	0.001	86	1	0
D	0.194	0.212	0.203	0.003	86	1	0
E	0.068	0.080	0.074	0.002	86	0	0

Notes: Z Score is your reported analytical result compared to the mean in terms of the standard deviation, calculated as (Result-Mean)/StddDev. The Parameter n is the number of results reported which are used to calculate the second iteration mean and standard deviation.

Florida Department of Law Enforcement

Alcohol Testing Program

BLOOD ALCOHOL PROFICIENCY INITIAL TEST OUTCOME REPORT

Proficiency Cycle: 25C1

Receive Results By: 05/12/2025

Method: GC

Analyst Name: Shanks, Christopher

Your 25C1 Proficiency test outcome is: Satisfactory

Evaluation Procedure:

First Iteration: For each level, the qualified results reported by participating analysts and reference labs are pooled, the mean, standard deviation and acceptable range are calculated using truncation, and results outside the acceptable range are excluded from the second iteration.

Second iteration: The mean, standard deviation and acceptable range are recalculated using truncation, every analyst's qualified results are compared to the recalculated acceptable range, and every analyst is assigned an outcome for the proficiency cycle. All analysts with Results Outside Acceptable Range receive retest samples. The retest results are compared to the acceptable range established by the initial test and the retested analyst's outcome for the proficiency cycle is assigned based on the second comparison.

Test Type	Vial Level	Vial Number	Results #1 Reported	#1 Z Score	Results #2 Reported	#2 Z Score
I	C	1327	0.040	-2.000	0.040	-2.000
I	D	1427	0.202	-0.333	0.204	0.333

Proficiency Cycle Statistics

Level	Lower Limit	Upper Limit	Mean (Avg)	Std Dev	N	Number Out Of Range	
						1st Iteration	2nd Iteration
A	0.227	0.245	0.236	0.003	86	1	1
B	0.140	0.152	0.146	0.002	88	1	0
C	0.039	0.045	0.042	0.001	86	1	0
D	0.194	0.212	0.203	0.003	86	1	0
E	0.068	0.080	0.074	0.002	86	0	0

Notes: Z Score is your reported analytical result compared to the mean in terms of the standard deviation, calculated as (Result-Mean)/StddDev. The Parameter n is the number of results reported which are used to calculate the second iteration mean and standard deviation.

Florida Department of Law Enforcement

Alcohol Testing Program

BLOOD ALCOHOL PROFICIENCY INITIAL TEST OUTCOME REPORT

Proficiency Cycle: 25C1

Receive Results By: 05/12/2025

Method: GC

Analyst Name: Shanks, Christopher

Your 25C1 Proficiency test outcome is: Satisfactory

Evaluation Procedure:

First Iteration: For each level, the qualified results reported by participating analysts and reference labs are pooled, the mean, standard deviation and acceptable range are calculated using truncation, and results outside the acceptable range are excluded from the second iteration.

Second iteration: The mean, standard deviation and acceptable range are recalculated using truncation, every analyst's qualified results are compared to the recalculated acceptable range, and every analyst is assigned an outcome for the proficiency cycle. All analysts with Results Outside Acceptable Range receive retest samples. The retest results are compared to the acceptable range established by the initial test and the retested analyst's outcome for the proficiency cycle is assigned based on the second comparison.

Test Type	Vial Level	Vial Number	Results #1 Reported	#1 Z Score	Results #2 Reported	#2 Z Score
I	A	1128	0.237	0.333	0.234	-0.667
I	E	1527	0.072	-1.000	0.073	-0.500

Proficiency Cycle Statistics

Level	Lower Limit	Upper Limit	Mean (Avg)	Std Dev	N	Number Out Of Range	
						1st Iteration	2nd Iteration
A	0.227	0.245	0.236	0.003	86	1	1
B	0.140	0.152	0.146	0.002	88	1	0
C	0.039	0.045	0.042	0.001	86	1	0
D	0.194	0.212	0.203	0.003	86	1	0
E	0.068	0.080	0.074	0.002	86	0	0

Notes: Z Score is your reported analytical result compared to the mean in terms of the standard deviation, calculated as (Result-Mean)/StddDev. The Parameter n is the number of results reported which are used to calculate the second iteration mean and standard deviation.

Florida Department of Law Enforcement

Alcohol Testing Program

BLOOD ALCOHOL PROFICIENCY INITIAL TEST OUTCOME REPORT

Proficiency Cycle: 25C1

Receive Results By: 04/24/2025

Method: GC

Analyst Name: Shaw, Kristie

Your 25C1 Proficiency test outcome is: Satisfactory

Evaluation Procedure:

First Iteration: For each level, the qualified results reported by participating analysts and reference labs are pooled, the mean, standard deviation and acceptable range are calculated using truncation, and results outside the acceptable range are excluded from the second iteration.

Second iteration: The mean, standard deviation and acceptable range are recalculated using truncation, every analyst's qualified results are compared to the recalculated acceptable range, and every analyst is assigned an outcome for the proficiency cycle. All analysts with Results Outside Acceptable Range receive retest samples. The retest results are compared to the acceptable range established by the initial test and the retested analyst's outcome for the proficiency cycle is assigned based on the second comparison.

Test Type	Vial Level	Vial Number	Results #1 Reported	#1 Z Score	Results #2 Reported	#2 Z Score
I	B	1228	0.145	-0.500	0.145	-0.500
I	C	1328	0.043	1.000	0.043	1.000

Proficiency Cycle Statistics

Level	Lower Limit	Upper Limit	Mean (Avg)	Std Dev	N	Number Out Of Range	
						1st Iteration	2nd Iteration
A	0.227	0.245	0.236	0.003	86	1	1
B	0.140	0.152	0.146	0.002	88	1	0
C	0.039	0.045	0.042	0.001	86	1	0
D	0.194	0.212	0.203	0.003	86	1	0
E	0.068	0.080	0.074	0.002	86	0	0

Notes: Z Score is your reported analytical result compared to the mean in terms of the standard deviation, calculated as (Result-Mean)/StddDev. The Parameter n is the number of results reported which are used to calculate the second iteration mean and standard deviation.

Florida Department of Law Enforcement

Alcohol Testing Program

BLOOD ALCOHOL PROFICIENCY INITIAL TEST OUTCOME REPORT

Proficiency Cycle: 25C1

Receive Results By: 04/24/2025

Method: GC

Analyst Name: Shaw, Kristie

Your 25C1 Proficiency test outcome is: Satisfactory

Evaluation Procedure:

First Iteration: For each level, the qualified results reported by participating analysts and reference labs are pooled, the mean, standard deviation and acceptable range are calculated using truncation, and results outside the acceptable range are excluded from the second iteration.

Second iteration: The mean, standard deviation and acceptable range are recalculated using truncation, every analyst's qualified results are compared to the recalculated acceptable range, and every analyst is assigned an outcome for the proficiency cycle. All analysts with Results Outside Acceptable Range receive retest samples. The retest results are compared to the acceptable range established by the initial test and the retested analyst's outcome for the proficiency cycle is assigned based on the second comparison.

Test Type	Vial Level	Vial Number	Results #1 Reported	#1 Z Score	Results #2 Reported	#2 Z Score
I	D	1428	0.201	-0.667	0.203	0.000
I	E	1528	0.074	0.000	0.074	0.000

Proficiency Cycle Statistics

Level	Lower Limit	Upper Limit	Mean (Avg)	Std Dev	N	Number Out Of Range	
						1st Iteration	2nd Iteration
A	0.227	0.245	0.236	0.003	86	1	1
B	0.140	0.152	0.146	0.002	88	1	0
C	0.039	0.045	0.042	0.001	86	1	0
D	0.194	0.212	0.203	0.003	86	1	0
E	0.068	0.080	0.074	0.002	86	0	0

Notes: Z Score is your reported analytical result compared to the mean in terms of the standard deviation, calculated as (Result-Mean)/StddDev. The Parameter n is the number of results reported which are used to calculate the second iteration mean and standard deviation.

Florida Department of Law Enforcement

Alcohol Testing Program

BLOOD ALCOHOL PROFICIENCY INITIAL TEST OUTCOME REPORT

Proficiency Cycle: 25C1

Receive Results By: 04/22/2025

Method: GC

Analyst Name: Shoff, Elisa

Your 25C1 Proficiency test outcome is: Satisfactory

Evaluation Procedure:

First Iteration: For each level, the qualified results reported by participating analysts and reference labs are pooled, the mean, standard deviation and acceptable range are calculated using truncation, and results outside the acceptable range are excluded from the second iteration.

Second iteration: The mean, standard deviation and acceptable range are recalculated using truncation, every analyst's qualified results are compared to the recalculated acceptable range, and every analyst is assigned an outcome for the proficiency cycle. All analysts with Results Outside Acceptable Range receive retest samples. The retest results are compared to the acceptable range established by the initial test and the retested analyst's outcome for the proficiency cycle is assigned based on the second comparison.

Test Type	Vial Level	Vial Number	Results #1 Reported	#1 Z Score	Results #2 Reported	#2 Z Score
I	A	1129	0.236	0.000	0.237	0.333
I	B	1229	0.145	-0.500	0.148	1.000

Proficiency Cycle Statistics

Level	Lower Limit	Upper Limit	Mean (Avg)	Std Dev	N	Number Out Of Range	
						1st Iteration	2nd Iteration
A	0.227	0.245	0.236	0.003	86	1	1
B	0.140	0.152	0.146	0.002	88	1	0
C	0.039	0.045	0.042	0.001	86	1	0
D	0.194	0.212	0.203	0.003	86	1	0
E	0.068	0.080	0.074	0.002	86	0	0

Notes: Z Score is your reported analytical result compared to the mean in terms of the standard deviation, calculated as (Result-Mean)/StddDev. The Parameter n is the number of results reported which are used to calculate the second iteration mean and standard deviation.

Florida Department of Law Enforcement

Alcohol Testing Program

BLOOD ALCOHOL PROFICIENCY INITIAL TEST OUTCOME REPORT

Proficiency Cycle: 25C1

Receive Results By: 04/24/2025

Method: GC

Analyst Name: Singh, Gurjodh

Your 25C1 Proficiency test outcome is: Satisfactory

Evaluation Procedure:

First Iteration: For each level, the qualified results reported by participating analysts and reference labs are pooled, the mean, standard deviation and acceptable range are calculated using truncation, and results outside the acceptable range are excluded from the second iteration.

Second iteration: The mean, standard deviation and acceptable range are recalculated using truncation, every analyst's qualified results are compared to the recalculated acceptable range, and every analyst is assigned an outcome for the proficiency cycle. All analysts with Results Outside Acceptable Range receive retest samples. The retest results are compared to the acceptable range established by the initial test and the retested analyst's outcome for the proficiency cycle is assigned based on the second comparison.

Test Type	Vial Level	Vial Number	Results #1 Reported	#1 Z Score	Results #2 Reported	#2 Z Score
I	A	1145	0.242	2.000	0.243	2.333
I	B	1245	0.149	1.500	0.147	0.500
I	C	1344	0.042	0.000	0.042	0.000
I	D	1444	0.207	1.333	0.207	1.333
I	E	1544	0.074	0.000	0.075	0.500

Proficiency Cycle Statistics

Level	Lower Limit	Upper Limit	Mean (Avg)	Std Dev	N	Number Out Of Range	
						1st Iteration	2nd Iteration
A	0.227	0.245	0.236	0.003	86	1	1
B	0.140	0.152	0.146	0.002	88	1	0
C	0.039	0.045	0.042	0.001	86	1	0
D	0.194	0.212	0.203	0.003	86	1	0
E	0.068	0.080	0.074	0.002	86	0	0

Notes: Z Score is your reported analytical result compared to the mean in terms of the standard deviation, calculated as (Result-Mean)/StddDev. The Parameter n is the number of results reported which are used to calculate the second iteration mean and standard deviation.

Florida Department of Law Enforcement

Alcohol Testing Program

BLOOD ALCOHOL PROFICIENCY INITIAL TEST OUTCOME REPORT

Proficiency Cycle: 25C1

Receive Results By: 04/30/2025

Method: GC

Analyst Name: Slone, Caitlin

Your 25C1 Proficiency test outcome is: Satisfactory

Evaluation Procedure:

First Iteration: For each level, the qualified results reported by participating analysts and reference labs are pooled, the mean, standard deviation and acceptable range are calculated using truncation, and results outside the acceptable range are excluded from the second iteration.

Second iteration: The mean, standard deviation and acceptable range are recalculated using truncation, every analyst's qualified results are compared to the recalculated acceptable range, and every analyst is assigned an outcome for the proficiency cycle. All analysts with Results Outside Acceptable Range receive retest samples. The retest results are compared to the acceptable range established by the initial test and the retested analyst's outcome for the proficiency cycle is assigned based on the second comparison.

Test Type	Vial Level	Vial Number	Results #1 Reported	#1 Z Score	Results #2 Reported	#2 Z Score
I	C	1329	0.043	1.000	0.043	1.000
I	D	1429	0.205	0.667	0.204	0.333

Proficiency Cycle Statistics

Level	Lower Limit	Upper Limit	Mean (Avg)	Std Dev	N	Number Out Of Range	
						1st Iteration	2nd Iteration
A	0.227	0.245	0.236	0.003	86	1	1
B	0.140	0.152	0.146	0.002	88	1	0
C	0.039	0.045	0.042	0.001	86	1	0
D	0.194	0.212	0.203	0.003	86	1	0
E	0.068	0.080	0.074	0.002	86	0	0

Notes: Z Score is your reported analytical result compared to the mean in terms of the standard deviation, calculated as (Result-Mean)/StddDev. The Parameter n is the number of results reported which are used to calculate the second iteration mean and standard deviation.

Florida Department of Law Enforcement

Alcohol Testing Program

BLOOD ALCOHOL PROFICIENCY INITIAL TEST OUTCOME REPORT

Proficiency Cycle: 25C1

Receive Results By: 04/30/2025

Method: GC

Analyst Name: Slone, Caitlin

Your 25C1 Proficiency test outcome is: Satisfactory

Evaluation Procedure:

First Iteration: For each level, the qualified results reported by participating analysts and reference labs are pooled, the mean, standard deviation and acceptable range are calculated using truncation, and results outside the acceptable range are excluded from the second iteration.

Second iteration: The mean, standard deviation and acceptable range are recalculated using truncation, every analyst's qualified results are compared to the recalculated acceptable range, and every analyst is assigned an outcome for the proficiency cycle. All analysts with Results Outside Acceptable Range receive retest samples. The retest results are compared to the acceptable range established by the initial test and the retested analyst's outcome for the proficiency cycle is assigned based on the second comparison.

Test Type	Vial Level	Vial Number	Results #1 Reported	#1 Z Score	Results #2 Reported	#2 Z Score
I	A	1130	0.236	0.000	0.234	-0.667
I	E	1529	0.074	0.000	0.074	0.000

Proficiency Cycle Statistics

Level	Lower Limit	Upper Limit	Mean (Avg)	Std Dev	N	Number Out Of Range	
						1st Iteration	2nd Iteration
A	0.227	0.245	0.236	0.003	86	1	1
B	0.140	0.152	0.146	0.002	88	1	0
C	0.039	0.045	0.042	0.001	86	1	0
D	0.194	0.212	0.203	0.003	86	1	0
E	0.068	0.080	0.074	0.002	86	0	0

Notes: Z Score is your reported analytical result compared to the mean in terms of the standard deviation, calculated as (Result-Mean)/StddDev. The Parameter n is the number of results reported which are used to calculate the second iteration mean and standard deviation.

Florida Department of Law Enforcement

Alcohol Testing Program

BLOOD ALCOHOL PROFICIENCY INITIAL TEST OUTCOME REPORT

Proficiency Cycle: 25C1

Receive Results By: 04/24/2025

Method: GC

Analyst Name: Tiscione, Nicholas

Your 25C1 Proficiency test outcome is: Satisfactory

Evaluation Procedure:

First Iteration: For each level, the qualified results reported by participating analysts and reference labs are pooled, the mean, standard deviation and acceptable range are calculated using truncation, and results outside the acceptable range are excluded from the second iteration.

Second iteration: The mean, standard deviation and acceptable range are recalculated using truncation, every analyst's qualified results are compared to the recalculated acceptable range, and every analyst is assigned an outcome for the proficiency cycle. All analysts with Results Outside Acceptable Range receive retest samples. The retest results are compared to the acceptable range established by the initial test and the retested analyst's outcome for the proficiency cycle is assigned based on the second comparison.

Test Type	Vial Level	Vial Number	Results #1 Reported	#1 Z Score	Results #2 Reported	#2 Z Score
I	B	1230	0.145	-0.500	0.144	-1.000
I	C	1330	0.043	1.000	0.042	0.000

Proficiency Cycle Statistics

Level	Lower Limit	Upper Limit	Mean (Avg)	Std Dev	N	Number Out Of Range	
						1st Iteration	2nd Iteration
A	0.227	0.245	0.236	0.003	86	1	1
B	0.140	0.152	0.146	0.002	88	1	0
C	0.039	0.045	0.042	0.001	86	1	0
D	0.194	0.212	0.203	0.003	86	1	0
E	0.068	0.080	0.074	0.002	86	0	0

Notes: Z Score is your reported analytical result compared to the mean in terms of the standard deviation, calculated as (Result-Mean)/StddDev. The Parameter n is the number of results reported which are used to calculate the second iteration mean and standard deviation.

Florida Department of Law Enforcement

Alcohol Testing Program

BLOOD ALCOHOL PROFICIENCY INITIAL TEST OUTCOME REPORT

Proficiency Cycle: 25C1

Receive Results By: 04/23/2025

Method: GC

Analyst Name: Toth, Mary Lou

Your 25C1 Proficiency test outcome is: Satisfactory

Evaluation Procedure:

First Iteration: For each level, the qualified results reported by participating analysts and reference labs are pooled, the mean, standard deviation and acceptable range are calculated using truncation, and results outside the acceptable range are excluded from the second iteration.

Second iteration: The mean, standard deviation and acceptable range are recalculated using truncation, every analyst's qualified results are compared to the recalculated acceptable range, and every analyst is assigned an outcome for the proficiency cycle. All analysts with Results Outside Acceptable Range receive retest samples. The retest results are compared to the acceptable range established by the initial test and the retested analyst's outcome for the proficiency cycle is assigned based on the second comparison.

Test Type	Vial Level	Vial Number	Results #1 Reported	#1 Z Score	Results #2 Reported	#2 Z Score
I	D	1430	0.204	0.333	0.204	0.333
I	E	1530	0.078	2.000	0.076	1.000

Proficiency Cycle Statistics

Level	Lower Limit	Upper Limit	Mean (Avg)	Std Dev	N	Number Out Of Range	
						1st Iteration	2nd Iteration
A	0.227	0.245	0.236	0.003	86	1	1
B	0.140	0.152	0.146	0.002	88	1	0
C	0.039	0.045	0.042	0.001	86	1	0
D	0.194	0.212	0.203	0.003	86	1	0
E	0.068	0.080	0.074	0.002	86	0	0

Notes: Z Score is your reported analytical result compared to the mean in terms of the standard deviation, calculated as (Result-Mean)/StddDev. The Parameter n is the number of results reported which are used to calculate the second iteration mean and standard deviation.

Florida Department of Law Enforcement

Alcohol Testing Program

BLOOD ALCOHOL PROFICIENCY INITIAL TEST OUTCOME REPORT

Proficiency Cycle: 25C1

Receive Results By: 04/23/2025

Method: GC

Analyst Name: Tran-Cook, Thu

Your 25C1 Proficiency test outcome is: Unsatisfactory

Evaluation Procedure:

First Iteration: For each level, the qualified results reported by participating analysts and reference labs are pooled, the mean, standard deviation and acceptable range are calculated using truncation, and results outside the acceptable range are excluded from the second iteration.

Second iteration: The mean, standard deviation and acceptable range are recalculated using truncation, every analyst's qualified results are compared to the recalculated acceptable range, and every analyst is assigned an outcome for the proficiency cycle. All analysts with Results Outside Acceptable Range receive retest samples. The retest results are compared to the acceptable range established by the initial test and the retested analyst's outcome for the proficiency cycle is assigned based on the second comparison.

Test Type	Vial Level	Vial Number	Results #1 Reported	#1 Z Score	Results #2 Reported	#2 Z Score
I	A	1131	0.243	2.333	0.247	3.667
I	B	1231	0.148	1.000	0.149	1.500

Proficiency Cycle Statistics

Level	Lower Limit	Upper Limit	Mean (Avg)	Std Dev	N	Number Out Of Range	
						1st Iteration	2nd Iteration
A	0.227	0.245	0.236	0.003	86	1	1
B	0.140	0.152	0.146	0.002	88	1	0
C	0.039	0.045	0.042	0.001	86	1	0
D	0.194	0.212	0.203	0.003	86	1	0
E	0.068	0.080	0.074	0.002	86	0	0

Notes: Z Score is your reported analytical result compared to the mean in terms of the standard deviation, calculated as (Result-Mean)/StddDev. The Parameter n is the number of results reported which are used to calculate the second iteration mean and standard deviation.

Florida Department of Law Enforcement

Alcohol Testing Program

BLOOD ALCOHOL PROFICIENCY INITIAL TEST OUTCOME REPORT

Proficiency Cycle: 25C1

Receive Results By: 04/23/2025

Method: GC

Analyst Name: Troescher, Lisa

Your 25C1 Proficiency test outcome is: Satisfactory

Evaluation Procedure:

First Iteration: For each level, the qualified results reported by participating analysts and reference labs are pooled, the mean, standard deviation and acceptable range are calculated using truncation, and results outside the acceptable range are excluded from the second iteration.

Second iteration: The mean, standard deviation and acceptable range are recalculated using truncation, every analyst's qualified results are compared to the recalculated acceptable range, and every analyst is assigned an outcome for the proficiency cycle. All analysts with Results Outside Acceptable Range receive retest samples. The retest results are compared to the acceptable range established by the initial test and the retested analyst's outcome for the proficiency cycle is assigned based on the second comparison.

Test Type	Vial Level	Vial Number	Results #1 Reported	#1 Z Score	Results #2 Reported	#2 Z Score
I	C	1331	0.043	1.000	0.043	1.000
I	D	1431	0.207	1.333	0.211	2.667

Proficiency Cycle Statistics

Level	Lower Limit	Upper Limit	Mean (Avg)	Std Dev	N	Number Out Of Range	
						1st Iteration	2nd Iteration
A	0.227	0.245	0.236	0.003	86	1	1
B	0.140	0.152	0.146	0.002	88	1	0
C	0.039	0.045	0.042	0.001	86	1	0
D	0.194	0.212	0.203	0.003	86	1	0
E	0.068	0.080	0.074	0.002	86	0	0

Notes: Z Score is your reported analytical result compared to the mean in terms of the standard deviation, calculated as (Result-Mean)/StddDev. The Parameter n is the number of results reported which are used to calculate the second iteration mean and standard deviation.

Florida Department of Law Enforcement

Alcohol Testing Program

BLOOD ALCOHOL PROFICIENCY INITIAL TEST OUTCOME REPORT

Proficiency Cycle: 25C1

Receive Results By: 04/21/2025

Method: GC

Analyst Name: Venarchick, Jaclyn

Your 25C1 Proficiency test outcome is: Satisfactory

Evaluation Procedure:

First Iteration: For each level, the qualified results reported by participating analysts and reference labs are pooled, the mean, standard deviation and acceptable range are calculated using truncation, and results outside the acceptable range are excluded from the second iteration.

Second iteration: The mean, standard deviation and acceptable range are recalculated using truncation, every analyst's qualified results are compared to the recalculated acceptable range, and every analyst is assigned an outcome for the proficiency cycle. All analysts with Results Outside Acceptable Range receive retest samples. The retest results are compared to the acceptable range established by the initial test and the retested analyst's outcome for the proficiency cycle is assigned based on the second comparison.

Test Type	Vial Level	Vial Number	Results #1 Reported	#1 Z Score	Results #2 Reported	#2 Z Score
I	A	1132	0.234	-0.667	0.235	-0.333
I	E	1531	0.075	0.500	0.075	0.500

Proficiency Cycle Statistics

Level	Lower Limit	Upper Limit	Mean (Avg)	Std Dev	N	Number Out Of Range	
						1st Iteration	2nd Iteration
A	0.227	0.245	0.236	0.003	86	1	1
B	0.140	0.152	0.146	0.002	88	1	0
C	0.039	0.045	0.042	0.001	86	1	0
D	0.194	0.212	0.203	0.003	86	1	0
E	0.068	0.080	0.074	0.002	86	0	0

Notes: Z Score is your reported analytical result compared to the mean in terms of the standard deviation, calculated as (Result-Mean)/StddDev. The Parameter n is the number of results reported which are used to calculate the second iteration mean and standard deviation.

Florida Department of Law Enforcement

Alcohol Testing Program

BLOOD ALCOHOL PROFICIENCY INITIAL TEST OUTCOME REPORT

Proficiency Cycle: 25C1

Receive Results By: 05/01/2025

Method: GC

Analyst Name: Wong, Anita

Your 25C1 Proficiency test outcome is: Unsatisfactory

Evaluation Procedure:

First Iteration: For each level, the qualified results reported by participating analysts and reference labs are pooled, the mean, standard deviation and acceptable range are calculated using truncation, and results outside the acceptable range are excluded from the second iteration.

Second iteration: The mean, standard deviation and acceptable range are recalculated using truncation, every analyst's qualified results are compared to the recalculated acceptable range, and every analyst is assigned an outcome for the proficiency cycle. All analysts with Results Outside Acceptable Range receive retest samples. The retest results are compared to the acceptable range established by the initial test and the retested analyst's outcome for the proficiency cycle is assigned based on the second comparison.

Test Type	Vial Level	Vial Number	Results #1 Reported	#1 Z Score	Results #2 Reported	#2 Z Score
I	A	1146	0.255	4.500	0.257	5.000
I	B	1246	0.151	2.500	0.149	1.500
I	C	1345	0.043	1.000	0.045	3.000
I	D	1445	0.214	3.667	0.213	3.333
I	E	1545	0.077	1.500	0.078	2.000

Proficiency Cycle Statistics

Level	Lower Limit	Upper Limit	Mean (Avg)	Std Dev	N	Number Out Of Range	
						1st Iteration	2nd Iteration
A	0.227	0.245	0.236	0.003	86	1	1
B	0.140	0.152	0.146	0.002	88	1	0
C	0.039	0.045	0.042	0.001	86	1	0
D	0.194	0.212	0.203	0.003	86	1	0
E	0.068	0.080	0.074	0.002	86	0	0

Notes: Z Score is your reported analytical result compared to the mean in terms of the standard deviation, calculated as (Result-Mean)/StddDev. The Parameter n is the number of results reported which are used to calculate the second iteration mean and standard deviation.

Florida Department of Law Enforcement

Alcohol Testing Program

BLOOD ALCOHOL PROFICIENCY INITIAL TEST OUTCOME REPORT

Proficiency Cycle: 25C1

Receive Results By: 04/22/2025

Method: GC

Analyst Name: Zaney, Mary Elizabeth

Your 25C1 Proficiency test outcome is: Satisfactory

Evaluation Procedure:

First Iteration: For each level, the qualified results reported by participating analysts and reference labs are pooled, the mean, standard deviation and acceptable range are calculated using truncation, and results outside the acceptable range are excluded from the second iteration.

Second iteration: The mean, standard deviation and acceptable range are recalculated using truncation, every analyst's qualified results are compared to the recalculated acceptable range, and every analyst is assigned an outcome for the proficiency cycle. All analysts with Results Outside Acceptable Range receive retest samples. The retest results are compared to the acceptable range established by the initial test and the retested analyst's outcome for the proficiency cycle is assigned based on the second comparison.

Test Type	Vial Level	Vial Number	Results #1 Reported	#1 Z Score	Results #2 Reported	#2 Z Score
I	B	1232	0.147	0.500	0.147	0.500
I	C	1332	0.043	1.000	0.044	2.000

Proficiency Cycle Statistics

Level	Lower Limit	Upper Limit	Mean (Avg)	Std Dev	N	Number Out Of Range	
						1st Iteration	2nd Iteration
A	0.227	0.245	0.236	0.003	86	1	1
B	0.140	0.152	0.146	0.002	88	1	0
C	0.039	0.045	0.042	0.001	86	1	0
D	0.194	0.212	0.203	0.003	86	1	0
E	0.068	0.080	0.074	0.002	86	0	0

Notes: Z Score is your reported analytical result compared to the mean in terms of the standard deviation, calculated as (Result-Mean)/StddDev. The Parameter n is the number of results reported which are used to calculate the second iteration mean and standard deviation.

Florida Department of Law Enforcement

Alcohol Testing Program

BLOOD ALCOHOL PROFICIENCY INITIAL TEST OUTCOME REPORT

Proficiency Cycle: 25C1

Receive Results By: 04/22/2025

Method: GC

Analyst Name: Zhou, Calaya

Your 25C1 Proficiency test outcome is: Satisfactory

Evaluation Procedure:

First Iteration: For each level, the qualified results reported by participating analysts and reference labs are pooled, the mean, standard deviation and acceptable range are calculated using truncation, and results outside the acceptable range are excluded from the second iteration.

Second iteration: The mean, standard deviation and acceptable range are recalculated using truncation, every analyst's qualified results are compared to the recalculated acceptable range, and every analyst is assigned an outcome for the proficiency cycle. All analysts with Results Outside Acceptable Range receive retest samples. The retest results are compared to the acceptable range established by the initial test and the retested analyst's outcome for the proficiency cycle is assigned based on the second comparison.

Test Type	Vial Level	Vial Number	Results #1 Reported	#1 Z Score	Results #2 Reported	#2 Z Score
I	D	1432	0.203	0.000	0.195	-2.667
I	E	1532	0.073	-0.500	0.071	-1.500

Proficiency Cycle Statistics

Level	Lower Limit	Upper Limit	Mean (Avg)	Std Dev	N	Number Out Of Range	
						1st Iteration	2nd Iteration
A	0.227	0.245	0.236	0.003	86	1	1
B	0.140	0.152	0.146	0.002	88	1	0
C	0.039	0.045	0.042	0.001	86	1	0
D	0.194	0.212	0.203	0.003	86	1	0
E	0.068	0.080	0.074	0.002	86	0	0

Notes: Z Score is your reported analytical result compared to the mean in terms of the standard deviation, calculated as (Result-Mean)/StddDev. The Parameter n is the number of results reported which are used to calculate the second iteration mean and standard deviation.

Florida Department of Law Enforcement

Alcohol Testing Program

BLOOD ALCOHOL PROFICIENCY INITIAL TEST OUTCOME REPORT

Proficiency Cycle: 25C1

Receive Results By: 05/07/2025

Method: GC

Analyst Name: Zumaeta, Edward

Your 25C1 Proficiency test outcome is: Satisfactory

Evaluation Procedure:

First Iteration: For each level, the qualified results reported by participating analysts and reference labs are pooled, the mean, standard deviation and acceptable range are calculated using truncation, and results outside the acceptable range are excluded from the second iteration.

Second iteration: The mean, standard deviation and acceptable range are recalculated using truncation, every analyst's qualified results are compared to the recalculated acceptable range, and every analyst is assigned an outcome for the proficiency cycle. All analysts with Results Outside Acceptable Range receive retest samples. The retest results are compared to the acceptable range established by the initial test and the retested analyst's outcome for the proficiency cycle is assigned based on the second comparison.

Test Type	Vial Level	Vial Number	Results #1 Reported	#1 Z Score	Results #2 Reported	#2 Z Score
I	A	1133	0.229	-2.333	0.229	-2.333
I	B	1233	0.141	-2.500	0.141	-2.500

Proficiency Cycle Statistics

Level	Lower Limit	Upper Limit	Mean (Avg)	Std Dev	N	Number Out Of Range	
						1st Iteration	2nd Iteration
A	0.227	0.245	0.236	0.003	86	1	1
B	0.140	0.152	0.146	0.002	88	1	0
C	0.039	0.045	0.042	0.001	86	1	0
D	0.194	0.212	0.203	0.003	86	1	0
E	0.068	0.080	0.074	0.002	86	0	0

Notes: Z Score is your reported analytical result compared to the mean in terms of the standard deviation, calculated as (Result-Mean)/StddDev. The Parameter n is the number of results reported which are used to calculate the second iteration mean and standard deviation.

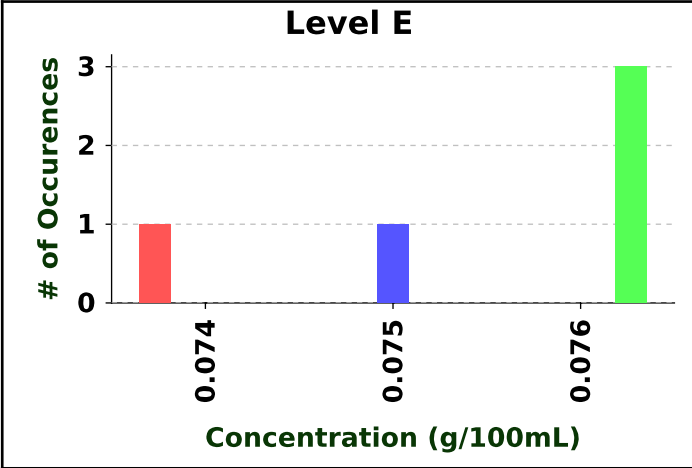
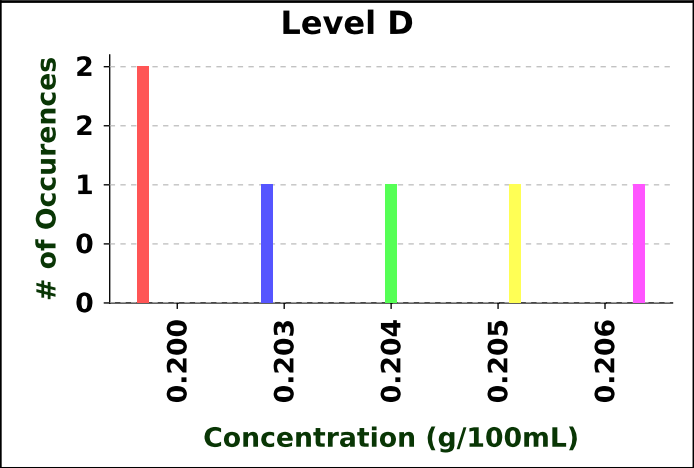
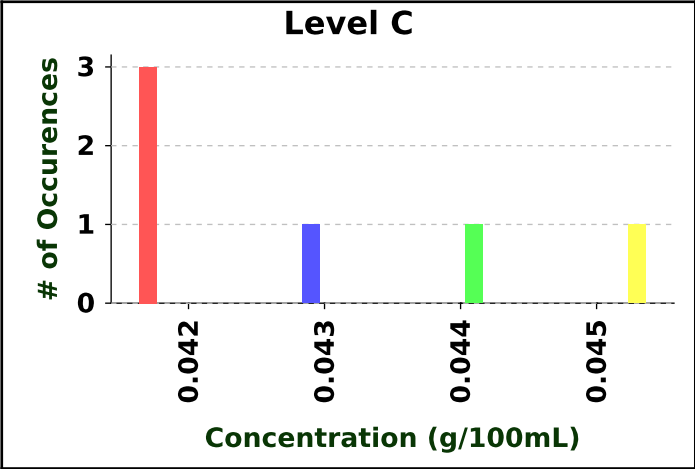
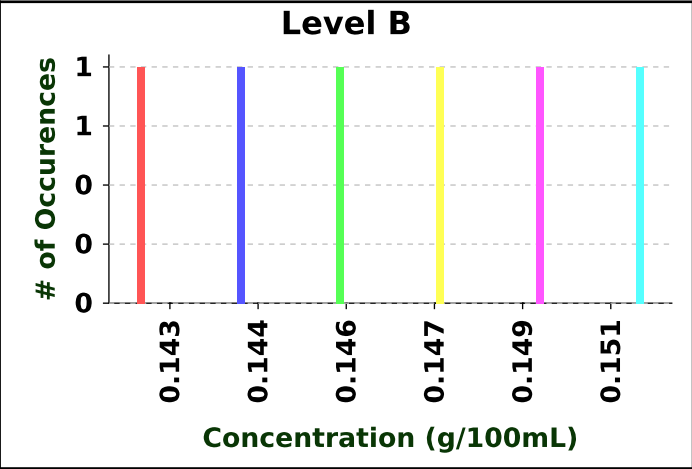
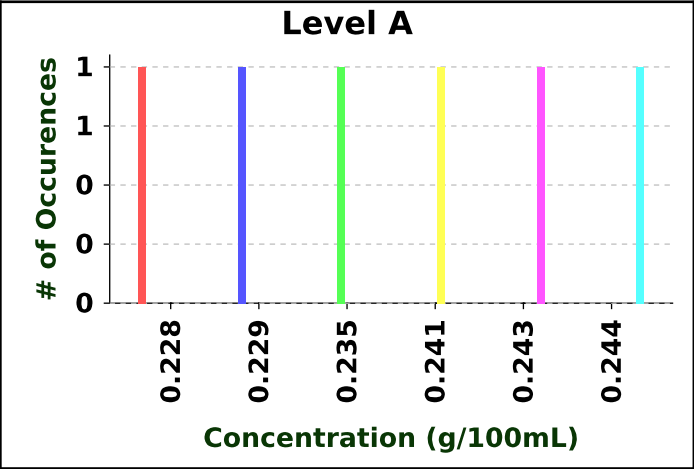
2025 Cycle 1 Blood Proficiency Test Results Summary

Statistics - First Iteration

Level	N	Mean	Std Dev (SD)	Mean - 3 (SD)	Mean + 3 (SD)
A	88	0.237	0.004	0.225	0.249
B	90	0.146	0.002	0.140	0.152
C	88	0.042	0.001	0.039	0.045
D	88	0.203	0.003	0.194	0.212
E	86	0.074	0.002	0.068	0.080

Statistics - Second Iteration

Level	N	Mean	Std Dev (SD)	Mean - 3 (SD)	Mean + 3 (SD)
A	86	0.236	0.003	0.227	0.245
B	88	0.146	0.002	0.140	0.152
C	86	0.042	0.001	0.039	0.045
D	86	0.203	0.003	0.194	0.212
E	86	0.074	0.002	0.068	0.080



Florida Department of Law Enforcement

Alcohol Testing Program

BLOOD ALCOHOL PROFICIENCY RE-TEST TEST OUTCOME REPORT

Proficiency Cycle: 25C1

Receive Results By: 05/20/2025

Method: GC

Analyst Name: Anderson, Carla

Your 25C1 Proficiency test outcome is: Satisfactory

Evaluation Procedure:

First Iteration: For each level, the qualified results reported by participating analysts and reference labs are pooled, the mean, standard deviation and acceptable range are calculated using truncation, and results outside the acceptable range are excluded from the second iteration.

Second iteration: The mean, standard deviation and acceptable range are recalculated using truncation, every analyst's qualified results are compared to the recalculated acceptable range, and every analyst is assigned an outcome for the proficiency cycle. All analysts with Results Outside Acceptable Range receive retest samples. The retest results are compared to the acceptable range established by the initial test and the retested analyst's outcome for the proficiency cycle is assigned based on the second comparison.

Test Type	Vial Level	Vial Number	Results #1 Reported	#1 Z Score	Results #2 Reported	#2 Z Score
R	A	1151	0.228	-2.667	0.229	-2.333
R	B	1251	0.144	-1.000	0.143	-1.500
R	C	1351	0.044	2.000	0.042	0.000
R	D	1451	0.200	-1.000	0.203	0.000
R	E	1546	0.076	1.000	0.074	0.000

Proficiency Cycle Statistics

Level	Lower Limit	Upper Limit	Mean (Avg)	Std Dev	N	Number Out Of Range	
						1st Iteration	2nd Iteration
A	0.227	0.245	0.236	0.003	86	1	1
B	0.140	0.152	0.146	0.002	88	1	0
C	0.039	0.045	0.042	0.001	86	1	0
D	0.194	0.212	0.203	0.003	86	1	0
E	0.068	0.080	0.074	0.002	86	0	0

Notes: Z Score is your reported analytical result compared to the mean in terms of the standard deviation, calculated as (Result-Mean)/StddDev. The Parameter n is the number of results reported which are used to calculate the second iteration mean and standard deviation.

Florida Department of Law Enforcement

Alcohol Testing Program

BLOOD ALCOHOL PROFICIENCY RE-TEST TEST OUTCOME REPORT

Proficiency Cycle: 25C1

Receive Results By: 05/22/2025

Method: GC

Analyst Name: Barbe, Stephanie

Your 25C1 Proficiency test outcome is: Satisfactory

Evaluation Procedure:

First Iteration: For each level, the qualified results reported by participating analysts and reference labs are pooled, the mean, standard deviation and acceptable range are calculated using truncation, and results outside the acceptable range are excluded from the second iteration.

Second iteration: The mean, standard deviation and acceptable range are recalculated using truncation, every analyst's qualified results are compared to the recalculated acceptable range, and every analyst is assigned an outcome for the proficiency cycle. All analysts with Results Outside Acceptable Range receive retest samples. The retest results are compared to the acceptable range established by the initial test and the retested analyst's outcome for the proficiency cycle is assigned based on the second comparison.

Test Type	Vial Level	Vial Number	Results #1 Reported	#1 Z Score	Results #2 Reported	#2 Z Score
R	A	1152	0.235	-0.333	0.241	1.667
R	B	1252	0.149	1.500	0.151	2.500
R	C	1352	0.045	3.000	0.043	1.000
R	D	1452	0.200	-1.000	0.205	0.667
R	E	1551	0.076	1.000	0.076	1.000

Proficiency Cycle Statistics

Level	Lower Limit	Upper Limit	Mean (Avg)	Std Dev	N	Number Out Of Range	
						1st Iteration	2nd Iteration
A	0.227	0.245	0.236	0.003	86	1	1
B	0.140	0.152	0.146	0.002	88	1	0
C	0.039	0.045	0.042	0.001	86	1	0
D	0.194	0.212	0.203	0.003	86	1	0
E	0.068	0.080	0.074	0.002	86	0	0

Notes: Z Score is your reported analytical result compared to the mean in terms of the standard deviation, calculated as (Result-Mean)/StddDev. The Parameter n is the number of results reported which are used to calculate the second iteration mean and standard deviation.

Florida Department of Law Enforcement

Alcohol Testing Program

BLOOD ALCOHOL PROFICIENCY RE-TEST TEST OUTCOME REPORT

Proficiency Cycle: 25C1

Receive Results By: 05/20/2025

Method: GC

Analyst Name: Tran-Cook, Thu

Your 25C1 Proficiency test outcome is: Satisfactory

Evaluation Procedure:

First Iteration: For each level, the qualified results reported by participating analysts and reference labs are pooled, the mean, standard deviation and acceptable range are calculated using truncation, and results outside the acceptable range are excluded from the second iteration.

Second iteration: The mean, standard deviation and acceptable range are recalculated using truncation, every analyst's qualified results are compared to the recalculated acceptable range, and every analyst is assigned an outcome for the proficiency cycle. All analysts with Results Outside Acceptable Range receive retest samples. The retest results are compared to the acceptable range established by the initial test and the retested analyst's outcome for the proficiency cycle is assigned based on the second comparison.

Test Type	Vial Level	Vial Number	Results #1 Reported	#1 Z Score	Results #2 Reported	#2 Z Score
R	A	1153	0.243	2.333	0.244	2.667
R	B	1253	0.146	0.000	0.147	0.500
R	C	1353	0.042	0.000	0.042	0.000
R	D	1453	0.204	0.333	0.206	1.000
R	E	1552	0.074	0.000	0.075	0.500

Proficiency Cycle Statistics

Level	Lower Limit	Upper Limit	Mean (Avg)	Std Dev	N	Number Out Of Range	
						1st Iteration	2nd Iteration
A	0.227	0.245	0.236	0.003	86	1	1
B	0.140	0.152	0.146	0.002	88	1	0
C	0.039	0.045	0.042	0.001	86	1	0
D	0.194	0.212	0.203	0.003	86	1	0
E	0.068	0.080	0.074	0.002	86	0	0

Notes: Z Score is your reported analytical result compared to the mean in terms of the standard deviation, calculated as $(\text{Result} - \text{Mean}) / \text{StdDev}$. The Parameter n is the number of results reported which are used to calculate the second iteration mean and standard deviation.