

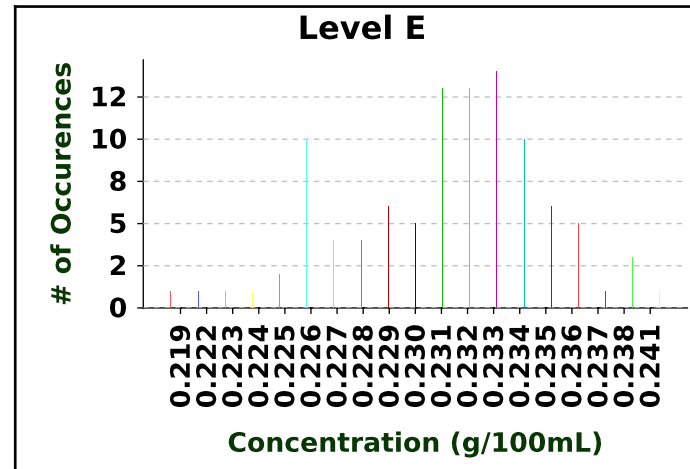
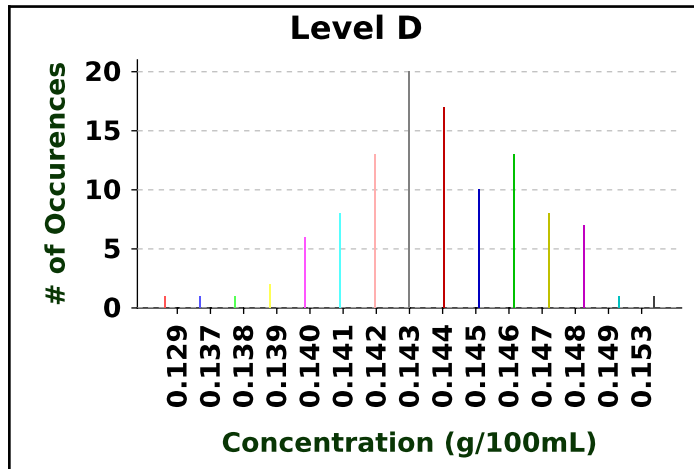
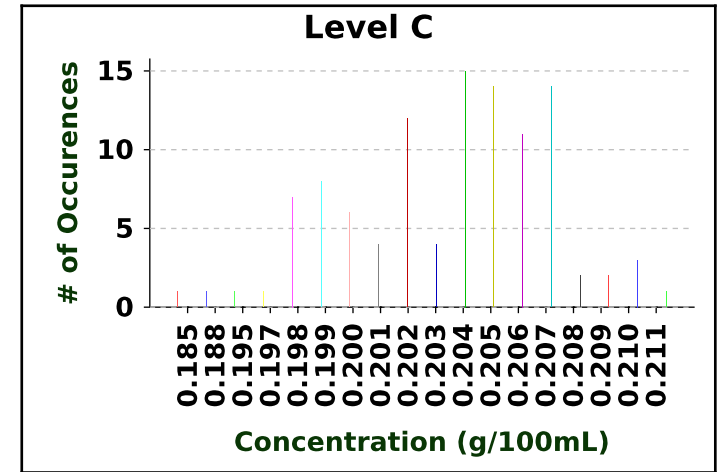
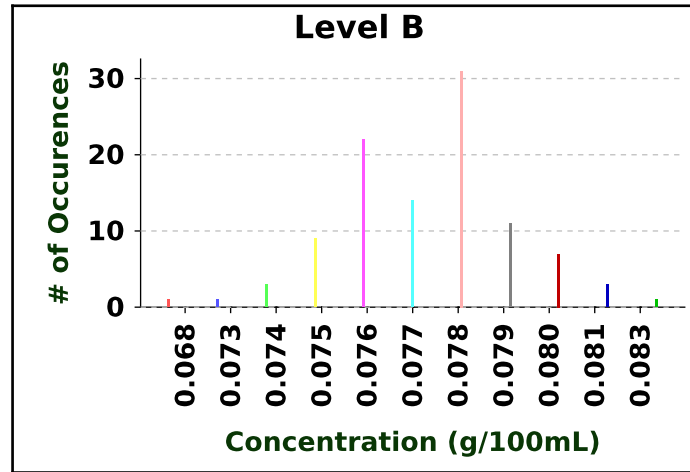
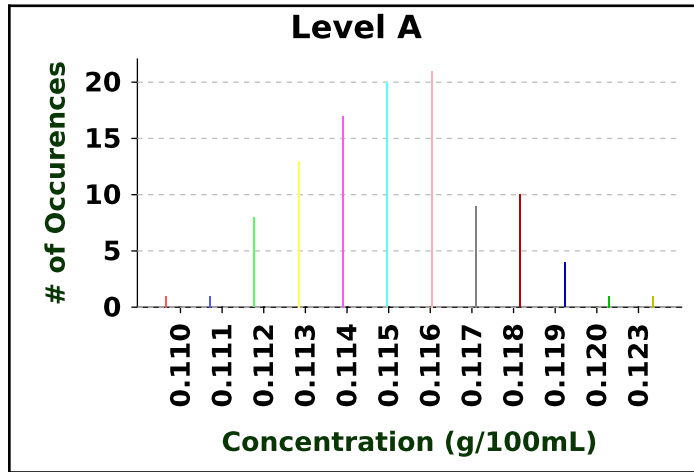
2022 Cycle 2 Blood Proficiency Test Results Summary

Statistics - First Iteration

Level	N	Mean	Std Dev (SD)	Mean - 3 (SD)	Mean + 3 (SD)
A	120	0.115	0.002	0.109	0.121
B	118	0.077	0.002	0.071	0.083
C	118	0.203	0.004	0.191	0.215
D	120	0.144	0.003	0.135	0.153
E	120	0.231	0.004	0.219	0.243

Statistics - Second Iteration

Level	N	Mean	Std Dev (SD)	Mean - 3 (SD)	Mean + 3 (SD)
A	118	0.115	0.002	0.109	0.121
B	116	0.077	0.002	0.071	0.083
C	114	0.204	0.003	0.195	0.213
D	118	0.144	0.003	0.135	0.153
E	120	0.231	0.004	0.219	0.243



Florida Department of Law Enforcement Alcohol Testing Program

BLOOD ALCOHOL PROFICIENCY INITIAL TEST OUTCOME REPORT

Proficiency Cycle: 22C2

Receive Results By: 10/20/2022

Method: GC

Analyst Name: Abraham, Dhanya

Your 22C2 Proficiency test outcome is: Satisfactory

Evaluation Procedure:

First Iteration: For each level, the qualified results reported by participating analysts and reference labs are pooled, the mean, standard deviation and acceptable range are calculated using truncation, and results outside the acceptable range are excluded from the second iteration.

Second iteration: The mean, standard deviation and acceptable range are recalculated using truncation, every analyst's qualified results are compared to the recalculated acceptable range, and every analyst is assigned an outcome for the proficiency cycle. All analysts with Results Outside Acceptable Range receive retest samples. The retest results are compared to the acceptable range established by the initial test and the retested analyst's outcome for the proficiency cycle is assigned based on the second comparison.

Test Type	Vial Level	Vial Number	Results #1 Reported	#1 Z Score	Results #2 Reported	#2 Z Score
I	A	2101	0.114	-0.500	0.115	0.000
I	B	2201	0.079	1.000	0.080	1.500

Proficiency Cycle Statistics

Level	Lower Limit	Upper Limit	Mean (Avg)	Std Dev	N	Number Out Of Range	
						1st Iteration	2nd Iteration
A	0.109	0.121	0.115	0.002	118	1	0
B	0.071	0.083	0.077	0.002	116	1	0
C	0.195	0.213	0.204	0.003	114	2	0
D	0.135	0.153	0.144	0.003	118	1	0
E	0.219	0.243	0.231	0.004	120	0	0

Notes: Z Score is your reported analytical result compared to the mean in terms of the standard deviation, calculated as $(\text{Result}-\text{Mean})/\text{StdDev}$. The Parameter n is the number of results reported which are used to calculate the second iteration mean and standard deviation.

Florida Department of Law Enforcement Alcohol Testing Program

BLOOD ALCOHOL PROFICIENCY INITIAL TEST OUTCOME REPORT

Proficiency Cycle: 22C2

Receive Results By: 10/26/2022

Method: GC

Analyst Name: Adams, Jazmine

Your 22C2 Proficiency test outcome is: Satisfactory

Evaluation Procedure:

First Iteration: For each level, the qualified results reported by participating analysts and reference labs are pooled, the mean, standard deviation and acceptable range are calculated using truncation, and results outside the acceptable range are excluded from the second iteration.

Second iteration: The mean, standard deviation and acceptable range are recalculated using truncation, every analyst's qualified results are compared to the recalculated acceptable range, and every analyst is assigned an outcome for the proficiency cycle. All analysts with Results Outside Acceptable Range receive retest samples. The retest results are compared to the acceptable range established by the initial test and the retested analyst's outcome for the proficiency cycle is assigned based on the second comparison.

Test Type	Vial Level	Vial Number	Results #1 Reported	#1 Z Score	Results #2 Reported	#2 Z Score
I	A	2143	0.116	0.500	0.115	0.000
I	B	2255	0.078	0.500	0.077	0.000
I	C	2343	0.200	-1.333	0.204	0.000
I	D	2455	0.144	0.000	0.145	0.333
I	E	2566	0.230	-0.250	0.237	1.500

Proficiency Cycle Statistics

Level	Lower Limit	Upper Limit	Mean (Avg)	Std Dev	N	Number Out Of Range	
						1st Iteration	2nd Iteration
A	0.109	0.121	0.115	0.002	118	1	0
B	0.071	0.083	0.077	0.002	116	1	0
C	0.195	0.213	0.204	0.003	114	2	0
D	0.135	0.153	0.144	0.003	118	1	0
E	0.219	0.243	0.231	0.004	120	0	0

Notes: Z Score is your reported analytical result compared to the mean in terms of the standard deviation, calculated as (Result-Mean)/StddDev. The Parameter n is the number of results reported which are used to calculate the second iteration mean and standard deviation.

Florida Department of Law Enforcement Alcohol Testing Program

BLOOD ALCOHOL PROFICIENCY INITIAL TEST OUTCOME REPORT

Proficiency Cycle: 22C2

Receive Results By: 10/26/2022

Method: GC

Analyst Name: Adams, Jazmine

Your 22C2 Proficiency test outcome is: Satisfactory

Evaluation Procedure:

First Iteration: For each level, the qualified results reported by participating analysts and reference labs are pooled, the mean, standard deviation and acceptable range are calculated using truncation, and results outside the acceptable range are excluded from the second iteration.

Second iteration: The mean, standard deviation and acceptable range are recalculated using truncation, every analyst's qualified results are compared to the recalculated acceptable range, and every analyst is assigned an outcome for the proficiency cycle. All analysts with Results Outside Acceptable Range receive retest samples. The retest results are compared to the acceptable range established by the initial test and the retested analyst's outcome for the proficiency cycle is assigned based on the second comparison.

Test Type	Vial Level	Vial Number	Results #1 Reported	#1 Z Score	Results #2 Reported	#2 Z Score
I	A	2142	0.116	0.500	0.115	0.000
I	B	2251	0.077	0.000	0.077	0.000
I	C	2342	0.206	0.667	0.206	0.667
I	D	2464	0.145	0.333	0.146	0.667
I	E	2565	0.234	0.750	0.235	1.000

Proficiency Cycle Statistics

Level	Lower Limit	Upper Limit	Mean (Avg)	Std Dev	N	Number Out Of Range	
						1st Iteration	2nd Iteration
A	0.109	0.121	0.115	0.002	118	1	0
B	0.071	0.083	0.077	0.002	116	1	0
C	0.195	0.213	0.204	0.003	114	2	0
D	0.135	0.153	0.144	0.003	118	1	0
E	0.219	0.243	0.231	0.004	120	0	0

Notes: Z Score is your reported analytical result compared to the mean in terms of the standard deviation, calculated as (Result-Mean)/StddDev. The Parameter n is the number of results reported which are used to calculate the second iteration mean and standard deviation.

Florida Department of Law Enforcement Alcohol Testing Program

BLOOD ALCOHOL PROFICIENCY INITIAL TEST OUTCOME REPORT

Proficiency Cycle: 22C2

Receive Results By: 10/27/2022

Method: GC

Analyst Name: Anderson, Carla

Your 22C2 Proficiency test outcome is: Satisfactory

Evaluation Procedure:

First Iteration: For each level, the qualified results reported by participating analysts and reference labs are pooled, the mean, standard deviation and acceptable range are calculated using truncation, and results outside the acceptable range are excluded from the second iteration.

Second iteration: The mean, standard deviation and acceptable range are recalculated using truncation, every analyst's qualified results are compared to the recalculated acceptable range, and every analyst is assigned an outcome for the proficiency cycle. All analysts with Results Outside Acceptable Range receive retest samples. The retest results are compared to the acceptable range established by the initial test and the retested analyst's outcome for the proficiency cycle is assigned based on the second comparison.

Test Type	Vial Level	Vial Number	Results #1 Reported	#1 Z Score	Results #2 Reported	#2 Z Score
I	C	2301	0.199	-1.667	0.198	-2.000
I	D	2401	0.140	-1.333	0.140	-1.333

Proficiency Cycle Statistics

Level	Lower Limit	Upper Limit	Mean (Avg)	Std Dev	N	Number Out Of Range	
						1st Iteration	2nd Iteration
A	0.109	0.121	0.115	0.002	118	1	0
B	0.071	0.083	0.077	0.002	116	1	0
C	0.195	0.213	0.204	0.003	114	2	0
D	0.135	0.153	0.144	0.003	118	1	0
E	0.219	0.243	0.231	0.004	120	0	0

Notes: Z Score is your reported analytical result compared to the mean in terms of the standard deviation, calculated as (Result-Mean)/Stdev. The Parameter n is the number of results reported which are used to calculate the second iteration mean and standard deviation.

Florida Department of Law Enforcement Alcohol Testing Program

BLOOD ALCOHOL PROFICIENCY INITIAL TEST OUTCOME REPORT

Proficiency Cycle: 22C2

Receive Results By: 10/19/2022

Method: GC

Analyst Name: Baldwin, Jacquelyn

Your 22C2 Proficiency test outcome is: Satisfactory

Evaluation Procedure:

First Iteration: For each level, the qualified results reported by participating analysts and reference labs are pooled, the mean, standard deviation and acceptable range are calculated using truncation, and results outside the acceptable range are excluded from the second iteration.

Second iteration: The mean, standard deviation and acceptable range are recalculated using truncation, every analyst's qualified results are compared to the recalculated acceptable range, and every analyst is assigned an outcome for the proficiency cycle. All analysts with Results Outside Acceptable Range receive retest samples. The retest results are compared to the acceptable range established by the initial test and the retested analyst's outcome for the proficiency cycle is assigned based on the second comparison.

Test Type	Vial Level	Vial Number	Results #1 Reported	#1 Z Score	Results #2 Reported	#2 Z Score
I	A	2102	0.119	2.000	0.118	1.500
I	E	2501	0.235	1.000	0.234	0.750

Proficiency Cycle Statistics

Level	Lower Limit	Upper Limit	Mean (Avg)	Std Dev	N	Number Out Of Range	
						1st Iteration	2nd Iteration
A	0.109	0.121	0.115	0.002	118	1	0
B	0.071	0.083	0.077	0.002	116	1	0
C	0.195	0.213	0.204	0.003	114	2	0
D	0.135	0.153	0.144	0.003	118	1	0
E	0.219	0.243	0.231	0.004	120	0	0

Notes: Z Score is your reported analytical result compared to the mean in terms of the standard deviation, calculated as (Result-Mean)/Stdev. The Parameter n is the number of results reported which are used to calculate the second iteration mean and standard deviation.

Florida Department of Law Enforcement Alcohol Testing Program

BLOOD ALCOHOL PROFICIENCY INITIAL TEST OUTCOME REPORT

Proficiency Cycle: 22C2

Receive Results By: 10/20/2022

Method: GC

Analyst Name: Barbe, Stephanie

Your 22C2 Proficiency test outcome is: Satisfactory

Evaluation Procedure:

First Iteration: For each level, the qualified results reported by participating analysts and reference labs are pooled, the mean, standard deviation and acceptable range are calculated using truncation, and results outside the acceptable range are excluded from the second iteration.

Second iteration: The mean, standard deviation and acceptable range are recalculated using truncation, every analyst's qualified results are compared to the recalculated acceptable range, and every analyst is assigned an outcome for the proficiency cycle. All analysts with Results Outside Acceptable Range receive retest samples. The retest results are compared to the acceptable range established by the initial test and the retested analyst's outcome for the proficiency cycle is assigned based on the second comparison.

Test Type	Vial Level	Vial Number	Results #1 Reported	#1 Z Score	Results #2 Reported	#2 Z Score
I	B	2202	0.078	0.500	0.077	0.000
I	C	2302	0.205	0.333	0.203	-0.333

Proficiency Cycle Statistics

Level	Lower Limit	Upper Limit	Mean (Avg)	Std Dev	N	Number Out Of Range	
						1st Iteration	2nd Iteration
A	0.109	0.121	0.115	0.002	118	1	0
B	0.071	0.083	0.077	0.002	116	1	0
C	0.195	0.213	0.204	0.003	114	2	0
D	0.135	0.153	0.144	0.003	118	1	0
E	0.219	0.243	0.231	0.004	120	0	0

Notes: Z Score is your reported analytical result compared to the mean in terms of the standard deviation, calculated as (Result-Mean)/StddDev. The Parameter n is the number of results reported which are used to calculate the second iteration mean and standard deviation.

Florida Department of Law Enforcement Alcohol Testing Program

BLOOD ALCOHOL PROFICIENCY INITIAL TEST OUTCOME REPORT

Proficiency Cycle: 22C2

Receive Results By: 10/25/2022

Method: GC

Analyst Name: Boland, Diane

Your 22C2 Proficiency test outcome is: Satisfactory

Evaluation Procedure:

First Iteration: For each level, the qualified results reported by participating analysts and reference labs are pooled, the mean, standard deviation and acceptable range are calculated using truncation, and results outside the acceptable range are excluded from the second iteration.

Second iteration: The mean, standard deviation and acceptable range are recalculated using truncation, every analyst's qualified results are compared to the recalculated acceptable range, and every analyst is assigned an outcome for the proficiency cycle. All analysts with Results Outside Acceptable Range receive retest samples. The retest results are compared to the acceptable range established by the initial test and the retested analyst's outcome for the proficiency cycle is assigned based on the second comparison.

Test Type	Vial Level	Vial Number	Results #1 Reported	#1 Z Score	Results #2 Reported	#2 Z Score
I	D	2402	0.142	-0.667	0.145	0.333
I	E	2502	0.229	-0.500	0.228	-0.750

Proficiency Cycle Statistics

Level	Lower Limit	Upper Limit	Mean (Avg)	Std Dev	N	Number Out Of Range	
						1st Iteration	2nd Iteration
A	0.109	0.121	0.115	0.002	118	1	0
B	0.071	0.083	0.077	0.002	116	1	0
C	0.195	0.213	0.204	0.003	114	2	0
D	0.135	0.153	0.144	0.003	118	1	0
E	0.219	0.243	0.231	0.004	120	0	0

Notes: Z Score is your reported analytical result compared to the mean in terms of the standard deviation, calculated as (Result-Mean)/StddDev. The Parameter n is the number of results reported which are used to calculate the second iteration mean and standard deviation.

Florida Department of Law Enforcement Alcohol Testing Program

BLOOD ALCOHOL PROFICIENCY INITIAL TEST OUTCOME REPORT

Proficiency Cycle: 22C2

Receive Results By: 10/31/2022

Method: GC

Analyst Name: Bridges, Anneli

Your 22C2 Proficiency test outcome is: Satisfactory

Evaluation Procedure:

First Iteration: For each level, the qualified results reported by participating analysts and reference labs are pooled, the mean, standard deviation and acceptable range are calculated using truncation, and results outside the acceptable range are excluded from the second iteration.

Second iteration: The mean, standard deviation and acceptable range are recalculated using truncation, every analyst's qualified results are compared to the recalculated acceptable range, and every analyst is assigned an outcome for the proficiency cycle. All analysts with Results Outside Acceptable Range receive retest samples. The retest results are compared to the acceptable range established by the initial test and the retested analyst's outcome for the proficiency cycle is assigned based on the second comparison.

Test Type	Vial Level	Vial Number	Results #1 Reported	#1 Z Score	Results #2 Reported	#2 Z Score
I	A	2135	0.116	0.500	0.115	0.000
I	B	2235	0.077	0.000	0.076	-0.500
I	C	2334	0.205	0.333	0.202	-0.667
I	D	2435	0.145	0.333	0.144	0.000
I	E	2537	0.233	0.500	0.232	0.250

Proficiency Cycle Statistics

Level	Lower Limit	Upper Limit	Mean (Avg)	Std Dev	N	Number Out Of Range	
						1st Iteration	2nd Iteration
A	0.109	0.121	0.115	0.002	118	1	0
B	0.071	0.083	0.077	0.002	116	1	0
C	0.195	0.213	0.204	0.003	114	2	0
D	0.135	0.153	0.144	0.003	118	1	0
E	0.219	0.243	0.231	0.004	120	0	0

Notes: Z Score is your reported analytical result compared to the mean in terms of the standard deviation, calculated as (Result-Mean)/StddDev. The Parameter n is the number of results reported which are used to calculate the second iteration mean and standard deviation.

Florida Department of Law Enforcement Alcohol Testing Program

BLOOD ALCOHOL PROFICIENCY INITIAL TEST OUTCOME REPORT

Proficiency Cycle: 22C2

Receive Results By: 10/18/2022

Method: GC

Analyst Name: Bugden, Kelly

Your 22C2 Proficiency test outcome is: Satisfactory

Evaluation Procedure:

First Iteration: For each level, the qualified results reported by participating analysts and reference labs are pooled, the mean, standard deviation and acceptable range are calculated using truncation, and results outside the acceptable range are excluded from the second iteration.

Second iteration: The mean, standard deviation and acceptable range are recalculated using truncation, every analyst's qualified results are compared to the recalculated acceptable range, and every analyst is assigned an outcome for the proficiency cycle. All analysts with Results Outside Acceptable Range receive retest samples. The retest results are compared to the acceptable range established by the initial test and the retested analyst's outcome for the proficiency cycle is assigned based on the second comparison.

Test Type	Vial Level	Vial Number	Results #1 Reported	#1 Z Score	Results #2 Reported	#2 Z Score
I	A	2103	0.116	0.500	0.116	0.500
I	B	2203	0.078	0.500	0.078	0.500

Proficiency Cycle Statistics

Level	Lower Limit	Upper Limit	Mean (Avg)	Std Dev	N	Number Out Of Range	
						1st Iteration	2nd Iteration
A	0.109	0.121	0.115	0.002	118	1	0
B	0.071	0.083	0.077	0.002	116	1	0
C	0.195	0.213	0.204	0.003	114	2	0
D	0.135	0.153	0.144	0.003	118	1	0
E	0.219	0.243	0.231	0.004	120	0	0

Notes: Z Score is your reported analytical result compared to the mean in terms of the standard deviation, calculated as (Result-Mean)/StddDev. The Parameter n is the number of results reported which are used to calculate the second iteration mean and standard deviation.

Florida Department of Law Enforcement Alcohol Testing Program

BLOOD ALCOHOL PROFICIENCY INITIAL TEST OUTCOME REPORT

Proficiency Cycle: 22C2

Receive Results By: 10/18/2022

Method: GC

Analyst Name: Bugden, Kelly

Your 22C2 Proficiency test outcome is: Satisfactory

Evaluation Procedure:

First Iteration: For each level, the qualified results reported by participating analysts and reference labs are pooled, the mean, standard deviation and acceptable range are calculated using truncation, and results outside the acceptable range are excluded from the second iteration.

Second iteration: The mean, standard deviation and acceptable range are recalculated using truncation, every analyst's qualified results are compared to the recalculated acceptable range, and every analyst is assigned an outcome for the proficiency cycle. All analysts with Results Outside Acceptable Range receive retest samples. The retest results are compared to the acceptable range established by the initial test and the retested analyst's outcome for the proficiency cycle is assigned based on the second comparison.

Test Type	Vial Level	Vial Number	Results #1 Reported	#1 Z Score	Results #2 Reported	#2 Z Score
I	C	2303	0.204	0.000	0.204	0.000
I	D	2403	0.145	0.333	0.146	0.667

Proficiency Cycle Statistics

Level	Lower Limit	Upper Limit	Mean (Avg)	Std Dev	N	Number Out Of Range	
						1st Iteration	2nd Iteration
A	0.109	0.121	0.115	0.002	118	1	0
B	0.071	0.083	0.077	0.002	116	1	0
C	0.195	0.213	0.204	0.003	114	2	0
D	0.135	0.153	0.144	0.003	118	1	0
E	0.219	0.243	0.231	0.004	120	0	0

Notes: Z Score is your reported analytical result compared to the mean in terms of the standard deviation, calculated as (Result-Mean)/Stdev. The Parameter n is the number of results reported which are used to calculate the second iteration mean and standard deviation.

Florida Department of Law Enforcement Alcohol Testing Program

BLOOD ALCOHOL PROFICIENCY INITIAL TEST OUTCOME REPORT

Proficiency Cycle: 22C2

Receive Results By: 10/31/2022

Method: GC

Analyst Name: Carey, Regina

Your 22C2 Proficiency test outcome is: Satisfactory

Evaluation Procedure:

First Iteration: For each level, the qualified results reported by participating analysts and reference labs are pooled, the mean, standard deviation and acceptable range are calculated using truncation, and results outside the acceptable range are excluded from the second iteration.

Second iteration: The mean, standard deviation and acceptable range are recalculated using truncation, every analyst's qualified results are compared to the recalculated acceptable range, and every analyst is assigned an outcome for the proficiency cycle. All analysts with Results Outside Acceptable Range receive retest samples. The retest results are compared to the acceptable range established by the initial test and the retested analyst's outcome for the proficiency cycle is assigned based on the second comparison.

Test Type	Vial Level	Vial Number	Results #1 Reported	#1 Z Score	Results #2 Reported	#2 Z Score
I	A	2104	0.117	1.000	0.119	2.000
I	E	2503	0.233	0.500	0.233	0.500

Proficiency Cycle Statistics

Level	Lower Limit	Upper Limit	Mean (Avg)	Std Dev	N	Number Out Of Range	
						1st Iteration	2nd Iteration
A	0.109	0.121	0.115	0.002	118	1	0
B	0.071	0.083	0.077	0.002	116	1	0
C	0.195	0.213	0.204	0.003	114	2	0
D	0.135	0.153	0.144	0.003	118	1	0
E	0.219	0.243	0.231	0.004	120	0	0

Notes: Z Score is your reported analytical result compared to the mean in terms of the standard deviation, calculated as (Result-Mean)/StddDev. The Parameter n is the number of results reported which are used to calculate the second iteration mean and standard deviation.

Florida Department of Law Enforcement Alcohol Testing Program

BLOOD ALCOHOL PROFICIENCY INITIAL TEST OUTCOME REPORT

Proficiency Cycle: 22C2

Receive Results By: 10/24/2022

Method: GC

Analyst Name: Carswell, Katheryn

Your 22C2 Proficiency test outcome is: Satisfactory

Evaluation Procedure:

First Iteration: For each level, the qualified results reported by participating analysts and reference labs are pooled, the mean, standard deviation and acceptable range are calculated using truncation, and results outside the acceptable range are excluded from the second iteration.

Second iteration: The mean, standard deviation and acceptable range are recalculated using truncation, every analyst's qualified results are compared to the recalculated acceptable range, and every analyst is assigned an outcome for the proficiency cycle. All analysts with Results Outside Acceptable Range receive retest samples. The retest results are compared to the acceptable range established by the initial test and the retested analyst's outcome for the proficiency cycle is assigned based on the second comparison.

Test Type	Vial Level	Vial Number	Results #1 Reported	#1 Z Score	Results #2 Reported	#2 Z Score
I	B	2204	0.078	0.500	0.077	0.000
I	C	2304	0.206	0.667	0.205	0.333

Proficiency Cycle Statistics

Level	Lower Limit	Upper Limit	Mean (Avg)	Std Dev	N	Number Out Of Range	
						1st Iteration	2nd Iteration
A	0.109	0.121	0.115	0.002	118	1	0
B	0.071	0.083	0.077	0.002	116	1	0
C	0.195	0.213	0.204	0.003	114	2	0
D	0.135	0.153	0.144	0.003	118	1	0
E	0.219	0.243	0.231	0.004	120	0	0

Notes: Z Score is your reported analytical result compared to the mean in terms of the standard deviation, calculated as (Result-Mean)/StddDev. The Parameter n is the number of results reported which are used to calculate the second iteration mean and standard deviation.

Florida Department of Law Enforcement Alcohol Testing Program

BLOOD ALCOHOL PROFICIENCY INITIAL TEST OUTCOME REPORT

Proficiency Cycle: 22C2

Receive Results By: 10/27/2022

Method: GC

Analyst Name: Catlin, Tara

Your 22C2 Proficiency test outcome is: Satisfactory

Evaluation Procedure:

First Iteration: For each level, the qualified results reported by participating analysts and reference labs are pooled, the mean, standard deviation and acceptable range are calculated using truncation, and results outside the acceptable range are excluded from the second iteration.

Second iteration: The mean, standard deviation and acceptable range are recalculated using truncation, every analyst's qualified results are compared to the recalculated acceptable range, and every analyst is assigned an outcome for the proficiency cycle. All analysts with Results Outside Acceptable Range receive retest samples. The retest results are compared to the acceptable range established by the initial test and the retested analyst's outcome for the proficiency cycle is assigned based on the second comparison.

Test Type	Vial Level	Vial Number	Results #1 Reported	#1 Z Score	Results #2 Reported	#2 Z Score
I	D	2404	0.147	1.000	0.144	0.000
I	E	2504	0.231	0.000	0.232	0.250

Proficiency Cycle Statistics

Level	Lower Limit	Upper Limit	Mean (Avg)	Std Dev	N	Number Out Of Range	
						1st Iteration	2nd Iteration
A	0.109	0.121	0.115	0.002	118	1	0
B	0.071	0.083	0.077	0.002	116	1	0
C	0.195	0.213	0.204	0.003	114	2	0
D	0.135	0.153	0.144	0.003	118	1	0
E	0.219	0.243	0.231	0.004	120	0	0

Notes: Z Score is your reported analytical result compared to the mean in terms of the standard deviation, calculated as (Result-Mean)/StddDev. The Parameter n is the number of results reported which are used to calculate the second iteration mean and standard deviation.

Florida Department of Law Enforcement Alcohol Testing Program

BLOOD ALCOHOL PROFICIENCY INITIAL TEST OUTCOME REPORT

Proficiency Cycle: 22C2

Receive Results By: 10/18/2022

Method: GC

Analyst Name: Chin, Jenna

Your 22C2 Proficiency test outcome is: Satisfactory

Evaluation Procedure:

First Iteration: For each level, the qualified results reported by participating analysts and reference labs are pooled, the mean, standard deviation and acceptable range are calculated using truncation, and results outside the acceptable range are excluded from the second iteration.

Second iteration: The mean, standard deviation and acceptable range are recalculated using truncation, every analyst's qualified results are compared to the recalculated acceptable range, and every analyst is assigned an outcome for the proficiency cycle. All analysts with Results Outside Acceptable Range receive retest samples. The retest results are compared to the acceptable range established by the initial test and the retested analyst's outcome for the proficiency cycle is assigned based on the second comparison.

Test Type	Vial Level	Vial Number	Results #1 Reported	#1 Z Score	Results #2 Reported	#2 Z Score
I	C	2305	0.204	0.000	0.204	0.000
I	D	2405	0.144	0.000	0.145	0.333

Proficiency Cycle Statistics

Level	Lower Limit	Upper Limit	Mean (Avg)	Std Dev	N	Number Out Of Range	
						1st Iteration	2nd Iteration
A	0.109	0.121	0.115	0.002	118	1	0
B	0.071	0.083	0.077	0.002	116	1	0
C	0.195	0.213	0.204	0.003	114	2	0
D	0.135	0.153	0.144	0.003	118	1	0
E	0.219	0.243	0.231	0.004	120	0	0

Notes: Z Score is your reported analytical result compared to the mean in terms of the standard deviation, calculated as (Result-Mean)/StddDev. The Parameter n is the number of results reported which are used to calculate the second iteration mean and standard deviation.

Florida Department of Law Enforcement Alcohol Testing Program

BLOOD ALCOHOL PROFICIENCY INITIAL TEST OUTCOME REPORT

Proficiency Cycle: 22C2

Receive Results By: 10/21/2022

Method: GC

Analyst Name: D'Elia, Paige

Your 22C2 Proficiency test outcome is: Satisfactory

Evaluation Procedure:

First Iteration: For each level, the qualified results reported by participating analysts and reference labs are pooled, the mean, standard deviation and acceptable range are calculated using truncation, and results outside the acceptable range are excluded from the second iteration.

Second iteration: The mean, standard deviation and acceptable range are recalculated using truncation, every analyst's qualified results are compared to the recalculated acceptable range, and every analyst is assigned an outcome for the proficiency cycle. All analysts with Results Outside Acceptable Range receive retest samples. The retest results are compared to the acceptable range established by the initial test and the retested analyst's outcome for the proficiency cycle is assigned based on the second comparison.

Test Type	Vial Level	Vial Number	Results #1 Reported	#1 Z Score	Results #2 Reported	#2 Z Score
I	A	2134	0.113	-1.000	0.113	-1.000
I	B	2234	0.076	-0.500	0.075	-1.000
I	C	2333	0.200	-1.333	0.199	-1.667
I	D	2432	0.141	-1.000	0.141	-1.000
I	E	2536	0.228	-0.750	0.228	-0.750

Proficiency Cycle Statistics

Level	Lower Limit	Upper Limit	Mean (Avg)	Std Dev	N	Number Out Of Range	
						1st Iteration	2nd Iteration
A	0.109	0.121	0.115	0.002	118	1	0
B	0.071	0.083	0.077	0.002	116	1	0
C	0.195	0.213	0.204	0.003	114	2	0
D	0.135	0.153	0.144	0.003	118	1	0
E	0.219	0.243	0.231	0.004	120	0	0

Notes: Z Score is your reported analytical result compared to the mean in terms of the standard deviation, calculated as (Result-Mean)/StddDev. The Parameter n is the number of results reported which are used to calculate the second iteration mean and standard deviation.

Florida Department of Law Enforcement Alcohol Testing Program

BLOOD ALCOHOL PROFICIENCY INITIAL TEST OUTCOME REPORT

Proficiency Cycle: 22C2

Receive Results By: 10/15/2022

Method: GC

Analyst Name: Digman, Zachary

Your 22C2 Proficiency test outcome is: Satisfactory

Evaluation Procedure:

First Iteration: For each level, the qualified results reported by participating analysts and reference labs are pooled, the mean, standard deviation and acceptable range are calculated using truncation, and results outside the acceptable range are excluded from the second iteration.

Second iteration: The mean, standard deviation and acceptable range are recalculated using truncation, every analyst's qualified results are compared to the recalculated acceptable range, and every analyst is assigned an outcome for the proficiency cycle. All analysts with Results Outside Acceptable Range receive retest samples. The retest results are compared to the acceptable range established by the initial test and the retested analyst's outcome for the proficiency cycle is assigned based on the second comparison.

Test Type	Vial Level	Vial Number	Results #1 Reported	#1 Z Score	Results #2 Reported	#2 Z Score
I	A	2133	0.113	-1.000	0.110	-2.500
I	B	2232	0.076	-0.500	0.073	-2.000
I	C	2332	0.201	-1.000	0.195	-3.000
I	D	2434	0.140	-1.333	0.137	-2.333
I	E	2534	0.227	-1.000	0.223	-2.000

Proficiency Cycle Statistics

Level	Lower Limit	Upper Limit	Mean (Avg)	Std Dev	N	Number Out Of Range	
						1st Iteration	2nd Iteration
A	0.109	0.121	0.115	0.002	118	1	0
B	0.071	0.083	0.077	0.002	116	1	0
C	0.195	0.213	0.204	0.003	114	2	0
D	0.135	0.153	0.144	0.003	118	1	0
E	0.219	0.243	0.231	0.004	120	0	0

Notes: Z Score is your reported analytical result compared to the mean in terms of the standard deviation, calculated as (Result-Mean)/StddDev. The Parameter n is the number of results reported which are used to calculate the second iteration mean and standard deviation.

Florida Department of Law Enforcement Alcohol Testing Program

BLOOD ALCOHOL PROFICIENCY INITIAL TEST OUTCOME REPORT

Proficiency Cycle: 22C2

Receive Results By: 10/21/2022

Method: GC

Analyst Name: Drake, Justine

Your 22C2 Proficiency test outcome is: Satisfactory

Evaluation Procedure:

First Iteration: For each level, the qualified results reported by participating analysts and reference labs are pooled, the mean, standard deviation and acceptable range are calculated using truncation, and results outside the acceptable range are excluded from the second iteration.

Second iteration: The mean, standard deviation and acceptable range are recalculated using truncation, every analyst's qualified results are compared to the recalculated acceptable range, and every analyst is assigned an outcome for the proficiency cycle. All analysts with Results Outside Acceptable Range receive retest samples. The retest results are compared to the acceptable range established by the initial test and the retested analyst's outcome for the proficiency cycle is assigned based on the second comparison.

Test Type	Vial Level	Vial Number	Results #1 Reported	#1 Z Score	Results #2 Reported	#2 Z Score
I	A	2105	0.113	-1.000	0.112	-1.500
I	E	2505	0.226	-1.250	0.222	-2.250

Proficiency Cycle Statistics

Level	Lower Limit	Upper Limit	Mean (Avg)	Std Dev	N	Number Out Of Range	
						1st Iteration	2nd Iteration
A	0.109	0.121	0.115	0.002	118	1	0
B	0.071	0.083	0.077	0.002	116	1	0
C	0.195	0.213	0.204	0.003	114	2	0
D	0.135	0.153	0.144	0.003	118	1	0
E	0.219	0.243	0.231	0.004	120	0	0

Notes: Z Score is your reported analytical result compared to the mean in terms of the standard deviation, calculated as (Result-Mean)/StddDev. The Parameter n is the number of results reported which are used to calculate the second iteration mean and standard deviation.

Florida Department of Law Enforcement Alcohol Testing Program

BLOOD ALCOHOL PROFICIENCY INITIAL TEST OUTCOME REPORT

Proficiency Cycle: 22C2

Receive Results By: 10/27/2022

Method: GC

Analyst Name: Drayton, Brittney

Your 22C2 Proficiency test outcome is: Satisfactory

Evaluation Procedure:

First Iteration: For each level, the qualified results reported by participating analysts and reference labs are pooled, the mean, standard deviation and acceptable range are calculated using truncation, and results outside the acceptable range are excluded from the second iteration.

Second iteration: The mean, standard deviation and acceptable range are recalculated using truncation, every analyst's qualified results are compared to the recalculated acceptable range, and every analyst is assigned an outcome for the proficiency cycle. All analysts with Results Outside Acceptable Range receive retest samples. The retest results are compared to the acceptable range established by the initial test and the retested analyst's outcome for the proficiency cycle is assigned based on the second comparison.

Test Type	Vial Level	Vial Number	Results #1 Reported	#1 Z Score	Results #2 Reported	#2 Z Score
I	B	2205	0.079	1.000	0.079	1.000
I	C	2306	0.206	0.667	0.207	1.000

Proficiency Cycle Statistics

Level	Lower Limit	Upper Limit	Mean (Avg)	Std Dev	N	Number Out Of Range	
						1st Iteration	2nd Iteration
A	0.109	0.121	0.115	0.002	118	1	0
B	0.071	0.083	0.077	0.002	116	1	0
C	0.195	0.213	0.204	0.003	114	2	0
D	0.135	0.153	0.144	0.003	118	1	0
E	0.219	0.243	0.231	0.004	120	0	0

Notes: Z Score is your reported analytical result compared to the mean in terms of the standard deviation, calculated as (Result-Mean)/StddDev. The Parameter n is the number of results reported which are used to calculate the second iteration mean and standard deviation.

Florida Department of Law Enforcement Alcohol Testing Program

BLOOD ALCOHOL PROFICIENCY INITIAL TEST OUTCOME REPORT

Proficiency Cycle: 22C2

Receive Results By: 10/27/2022

Method: GC

Analyst Name: Drayton, Brittney

Your 22C2 Proficiency test outcome is: Satisfactory

Evaluation Procedure:

First Iteration: For each level, the qualified results reported by participating analysts and reference labs are pooled, the mean, standard deviation and acceptable range are calculated using truncation, and results outside the acceptable range are excluded from the second iteration.

Second iteration: The mean, standard deviation and acceptable range are recalculated using truncation, every analyst's qualified results are compared to the recalculated acceptable range, and every analyst is assigned an outcome for the proficiency cycle. All analysts with Results Outside Acceptable Range receive retest samples. The retest results are compared to the acceptable range established by the initial test and the retested analyst's outcome for the proficiency cycle is assigned based on the second comparison.

Test Type	Vial Level	Vial Number	Results #1 Reported	#1 Z Score	Results #2 Reported	#2 Z Score
I	D	2406	0.143	-0.333	0.142	-0.667
I	E	2506	0.230	-0.250	0.232	0.250

Proficiency Cycle Statistics

Level	Lower Limit	Upper Limit	Mean (Avg)	Std Dev	N	Number Out Of Range	
						1st Iteration	2nd Iteration
A	0.109	0.121	0.115	0.002	118	1	0
B	0.071	0.083	0.077	0.002	116	1	0
C	0.195	0.213	0.204	0.003	114	2	0
D	0.135	0.153	0.144	0.003	118	1	0
E	0.219	0.243	0.231	0.004	120	0	0

Notes: Z Score is your reported analytical result compared to the mean in terms of the standard deviation, calculated as (Result-Mean)/StddDev. The Parameter n is the number of results reported which are used to calculate the second iteration mean and standard deviation.

Florida Department of Law Enforcement Alcohol Testing Program

BLOOD ALCOHOL PROFICIENCY INITIAL TEST OUTCOME REPORT

Proficiency Cycle: 22C2

Receive Results By: 10/27/2022

Method: GC

Analyst Name: Drayton, Brittney

Your 22C2 Proficiency test outcome is: Satisfactory

Evaluation Procedure:

First Iteration: For each level, the qualified results reported by participating analysts and reference labs are pooled, the mean, standard deviation and acceptable range are calculated using truncation, and results outside the acceptable range are excluded from the second iteration.

Second iteration: The mean, standard deviation and acceptable range are recalculated using truncation, every analyst's qualified results are compared to the recalculated acceptable range, and every analyst is assigned an outcome for the proficiency cycle. All analysts with Results Outside Acceptable Range receive retest samples. The retest results are compared to the acceptable range established by the initial test and the retested analyst's outcome for the proficiency cycle is assigned based on the second comparison.

Test Type	Vial Level	Vial Number	Results #1 Reported	#1 Z Score	Results #2 Reported	#2 Z Score
I	A	2106	0.119	2.000	0.119	2.000
I	B	2206	0.078	0.500	0.078	0.500

Proficiency Cycle Statistics

Level	Lower Limit	Upper Limit	Mean (Avg)	Std Dev	N	Number Out Of Range	
						1st Iteration	2nd Iteration
A	0.109	0.121	0.115	0.002	118	1	0
B	0.071	0.083	0.077	0.002	116	1	0
C	0.195	0.213	0.204	0.003	114	2	0
D	0.135	0.153	0.144	0.003	118	1	0
E	0.219	0.243	0.231	0.004	120	0	0

Notes: Z Score is your reported analytical result compared to the mean in terms of the standard deviation, calculated as (Result-Mean)/StddDev. The Parameter n is the number of results reported which are used to calculate the second iteration mean and standard deviation.

Florida Department of Law Enforcement Alcohol Testing Program

BLOOD ALCOHOL PROFICIENCY INITIAL TEST OUTCOME REPORT

Proficiency Cycle: 22C2

Receive Results By: 10/19/2022

Method: GC

Analyst Name: Farber, Brittany

Your 22C2 Proficiency test outcome is: Satisfactory

Evaluation Procedure:

First Iteration: For each level, the qualified results reported by participating analysts and reference labs are pooled, the mean, standard deviation and acceptable range are calculated using truncation, and results outside the acceptable range are excluded from the second iteration.

Second iteration: The mean, standard deviation and acceptable range are recalculated using truncation, every analyst's qualified results are compared to the recalculated acceptable range, and every analyst is assigned an outcome for the proficiency cycle. All analysts with Results Outside Acceptable Range receive retest samples. The retest results are compared to the acceptable range established by the initial test and the retested analyst's outcome for the proficiency cycle is assigned based on the second comparison.

Test Type	Vial Level	Vial Number	Results #1 Reported	#1 Z Score	Results #2 Reported	#2 Z Score
I	A	2150	0.113	-1.000	0.112	-1.500
I	B	2250	0.075	-1.000	0.075	-1.000
I	C	2338	0.199	-1.667	0.197	-2.333
I	D	2450	0.143	-0.333	0.142	-0.667
I	E	2549	0.225	-1.500	0.225	-1.500

Proficiency Cycle Statistics

Level	Lower Limit	Upper Limit	Mean (Avg)	Std Dev	N	Number Out Of Range	
						1st Iteration	2nd Iteration
A	0.109	0.121	0.115	0.002	118	1	0
B	0.071	0.083	0.077	0.002	116	1	0
C	0.195	0.213	0.204	0.003	114	2	0
D	0.135	0.153	0.144	0.003	118	1	0
E	0.219	0.243	0.231	0.004	120	0	0

Notes: Z Score is your reported analytical result compared to the mean in terms of the standard deviation, calculated as (Result-Mean)/StddDev. The Parameter n is the number of results reported which are used to calculate the second iteration mean and standard deviation.

Florida Department of Law Enforcement Alcohol Testing Program

BLOOD ALCOHOL PROFICIENCY INITIAL TEST OUTCOME REPORT

Proficiency Cycle: 22C2

Receive Results By: 10/18/2022

Method: GC

Analyst Name: Fenton, Emily

Your 22C2 Proficiency test outcome is: Satisfactory

Evaluation Procedure:

First Iteration: For each level, the qualified results reported by participating analysts and reference labs are pooled, the mean, standard deviation and acceptable range are calculated using truncation, and results outside the acceptable range are excluded from the second iteration.

Second iteration: The mean, standard deviation and acceptable range are recalculated using truncation, every analyst's qualified results are compared to the recalculated acceptable range, and every analyst is assigned an outcome for the proficiency cycle. All analysts with Results Outside Acceptable Range receive retest samples. The retest results are compared to the acceptable range established by the initial test and the retested analyst's outcome for the proficiency cycle is assigned based on the second comparison.

Test Type	Vial Level	Vial Number	Results #1 Reported	#1 Z Score	Results #2 Reported	#2 Z Score
I	C	2307	0.198	-2.000	0.200	-1.333
I	D	2407	0.141	-1.000	0.142	-0.667

Proficiency Cycle Statistics

Level	Lower Limit	Upper Limit	Mean (Avg)	Std Dev	N	Number Out Of Range	
						1st Iteration	2nd Iteration
A	0.109	0.121	0.115	0.002	118	1	0
B	0.071	0.083	0.077	0.002	116	1	0
C	0.195	0.213	0.204	0.003	114	2	0
D	0.135	0.153	0.144	0.003	118	1	0
E	0.219	0.243	0.231	0.004	120	0	0

Notes: Z Score is your reported analytical result compared to the mean in terms of the standard deviation, calculated as (Result-Mean)/StddDev. The Parameter n is the number of results reported which are used to calculate the second iteration mean and standard deviation.

Florida Department of Law Enforcement Alcohol Testing Program

BLOOD ALCOHOL PROFICIENCY INITIAL TEST OUTCOME REPORT

Proficiency Cycle: 22C2

Receive Results By: 10/17/2022

Method: GC

Analyst Name: Finkelstein, Marissa

Your 22C2 Proficiency test outcome is: Satisfactory

Evaluation Procedure:

First Iteration: For each level, the qualified results reported by participating analysts and reference labs are pooled, the mean, standard deviation and acceptable range are calculated using truncation, and results outside the acceptable range are excluded from the second iteration.

Second iteration: The mean, standard deviation and acceptable range are recalculated using truncation, every analyst's qualified results are compared to the recalculated acceptable range, and every analyst is assigned an outcome for the proficiency cycle. All analysts with Results Outside Acceptable Range receive retest samples. The retest results are compared to the acceptable range established by the initial test and the retested analyst's outcome for the proficiency cycle is assigned based on the second comparison.

Test Type	Vial Level	Vial Number	Results #1 Reported	#1 Z Score	Results #2 Reported	#2 Z Score
I	A	2107	0.117	1.000	0.118	1.500
I	E	2507	0.229	-0.500	0.231	0.000

Proficiency Cycle Statistics

Level	Lower Limit	Upper Limit	Mean (Avg)	Std Dev	N	Number Out Of Range	
						1st Iteration	2nd Iteration
A	0.109	0.121	0.115	0.002	118	1	0
B	0.071	0.083	0.077	0.002	116	1	0
C	0.195	0.213	0.204	0.003	114	2	0
D	0.135	0.153	0.144	0.003	118	1	0
E	0.219	0.243	0.231	0.004	120	0	0

Notes: Z Score is your reported analytical result compared to the mean in terms of the standard deviation, calculated as (Result-Mean)/StddDev. The Parameter n is the number of results reported which are used to calculate the second iteration mean and standard deviation.

Florida Department of Law Enforcement Alcohol Testing Program

BLOOD ALCOHOL PROFICIENCY INITIAL TEST OUTCOME REPORT

Proficiency Cycle: 22C2

Receive Results By: 10/25/2022

Method: GC

Analyst Name: Fox, William

Your 22C2 Proficiency test outcome is: Satisfactory

Evaluation Procedure:

First Iteration: For each level, the qualified results reported by participating analysts and reference labs are pooled, the mean, standard deviation and acceptable range are calculated using truncation, and results outside the acceptable range are excluded from the second iteration.

Second iteration: The mean, standard deviation and acceptable range are recalculated using truncation, every analyst's qualified results are compared to the recalculated acceptable range, and every analyst is assigned an outcome for the proficiency cycle. All analysts with Results Outside Acceptable Range receive retest samples. The retest results are compared to the acceptable range established by the initial test and the retested analyst's outcome for the proficiency cycle is assigned based on the second comparison.

Test Type	Vial Level	Vial Number	Results #1 Reported	#1 Z Score	Results #2 Reported	#2 Z Score
I	B	2207	0.075	-1.000	0.076	-0.500
I	C	2308	0.198	-2.000	0.199	-1.667

Proficiency Cycle Statistics

Level	Lower Limit	Upper Limit	Mean (Avg)	Std Dev	N	Number Out Of Range	
						1st Iteration	2nd Iteration
A	0.109	0.121	0.115	0.002	118	1	0
B	0.071	0.083	0.077	0.002	116	1	0
C	0.195	0.213	0.204	0.003	114	2	0
D	0.135	0.153	0.144	0.003	118	1	0
E	0.219	0.243	0.231	0.004	120	0	0

Notes: Z Score is your reported analytical result compared to the mean in terms of the standard deviation, calculated as (Result-Mean)/StddDev. The Parameter n is the number of results reported which are used to calculate the second iteration mean and standard deviation.

Florida Department of Law Enforcement Alcohol Testing Program

BLOOD ALCOHOL PROFICIENCY INITIAL TEST OUTCOME REPORT

Proficiency Cycle: 22C2

Receive Results By: 10/19/2022

Method: GC

Analyst Name: Garcia, Jose

Your 22C2 Proficiency test outcome is: Satisfactory

Evaluation Procedure:

First Iteration: For each level, the qualified results reported by participating analysts and reference labs are pooled, the mean, standard deviation and acceptable range are calculated using truncation, and results outside the acceptable range are excluded from the second iteration.

Second iteration: The mean, standard deviation and acceptable range are recalculated using truncation, every analyst's qualified results are compared to the recalculated acceptable range, and every analyst is assigned an outcome for the proficiency cycle. All analysts with Results Outside Acceptable Range receive retest samples. The retest results are compared to the acceptable range established by the initial test and the retested analyst's outcome for the proficiency cycle is assigned based on the second comparison.

Test Type	Vial Level	Vial Number	Results #1 Reported	#1 Z Score	Results #2 Reported	#2 Z Score
I	A	2131	0.115	0.000	0.115	0.000
I	B	2233	0.077	0.000	0.077	0.000
I	C	2350	0.202	-0.667	0.201	-1.000
I	D	2433	0.143	-0.333	0.142	-0.667
I	E	2533	0.230	-0.250	0.230	-0.250

Proficiency Cycle Statistics

Level	Lower Limit	Upper Limit	Mean (Avg)	Std Dev	N	Number Out Of Range	
						1st Iteration	2nd Iteration
A	0.109	0.121	0.115	0.002	118	1	0
B	0.071	0.083	0.077	0.002	116	1	0
C	0.195	0.213	0.204	0.003	114	2	0
D	0.135	0.153	0.144	0.003	118	1	0
E	0.219	0.243	0.231	0.004	120	0	0

Notes: Z Score is your reported analytical result compared to the mean in terms of the standard deviation, calculated as (Result-Mean)/StddDev. The Parameter n is the number of results reported which are used to calculate the second iteration mean and standard deviation.

Florida Department of Law Enforcement Alcohol Testing Program

BLOOD ALCOHOL PROFICIENCY INITIAL TEST OUTCOME REPORT

Proficiency Cycle: 22C2

Receive Results By: 10/17/2022

Method: GC

Analyst Name: Giachetti, Alexander

Your 22C2 Proficiency test outcome is: Satisfactory

Evaluation Procedure:

First Iteration: For each level, the qualified results reported by participating analysts and reference labs are pooled, the mean, standard deviation and acceptable range are calculated using truncation, and results outside the acceptable range are excluded from the second iteration.

Second iteration: The mean, standard deviation and acceptable range are recalculated using truncation, every analyst's qualified results are compared to the recalculated acceptable range, and every analyst is assigned an outcome for the proficiency cycle. All analysts with Results Outside Acceptable Range receive retest samples. The retest results are compared to the acceptable range established by the initial test and the retested analyst's outcome for the proficiency cycle is assigned based on the second comparison.

Test Type	Vial Level	Vial Number	Results #1 Reported	#1 Z Score	Results #2 Reported	#2 Z Score
I	D	2408	0.143	-0.333	0.142	-0.667
I	E	2508	0.230	-0.250	0.229	-0.500

Proficiency Cycle Statistics

Level	Lower Limit	Upper Limit	Mean (Avg)	Std Dev	N	Number Out Of Range	
						1st Iteration	2nd Iteration
A	0.109	0.121	0.115	0.002	118	1	0
B	0.071	0.083	0.077	0.002	116	1	0
C	0.195	0.213	0.204	0.003	114	2	0
D	0.135	0.153	0.144	0.003	118	1	0
E	0.219	0.243	0.231	0.004	120	0	0

Notes: Z Score is your reported analytical result compared to the mean in terms of the standard deviation, calculated as (Result-Mean)/StddDev. The Parameter n is the number of results reported which are used to calculate the second iteration mean and standard deviation.

Florida Department of Law Enforcement Alcohol Testing Program

BLOOD ALCOHOL PROFICIENCY INITIAL TEST OUTCOME REPORT

Proficiency Cycle: 22C2

Receive Results By: 10/17/2022

Method: GC

Analyst Name: Gonyea, Jennifer

Your 22C2 Proficiency test outcome is: Satisfactory

Evaluation Procedure:

First Iteration: For each level, the qualified results reported by participating analysts and reference labs are pooled, the mean, standard deviation and acceptable range are calculated using truncation, and results outside the acceptable range are excluded from the second iteration.

Second iteration: The mean, standard deviation and acceptable range are recalculated using truncation, every analyst's qualified results are compared to the recalculated acceptable range, and every analyst is assigned an outcome for the proficiency cycle. All analysts with Results Outside Acceptable Range receive retest samples. The retest results are compared to the acceptable range established by the initial test and the retested analyst's outcome for the proficiency cycle is assigned based on the second comparison.

Test Type	Vial Level	Vial Number	Results #1 Reported	#1 Z Score	Results #2 Reported	#2 Z Score
I	A	2108	0.116	0.500	0.116	0.500
I	B	2208	0.077	0.000	0.078	0.500

Proficiency Cycle Statistics

Level	Lower Limit	Upper Limit	Mean (Avg)	Std Dev	N	Number Out Of Range	
						1st Iteration	2nd Iteration
A	0.109	0.121	0.115	0.002	118	1	0
B	0.071	0.083	0.077	0.002	116	1	0
C	0.195	0.213	0.204	0.003	114	2	0
D	0.135	0.153	0.144	0.003	118	1	0
E	0.219	0.243	0.231	0.004	120	0	0

Notes: Z Score is your reported analytical result compared to the mean in terms of the standard deviation, calculated as (Result-Mean)/StddDev. The Parameter n is the number of results reported which are used to calculate the second iteration mean and standard deviation.

Florida Department of Law Enforcement Alcohol Testing Program

BLOOD ALCOHOL PROFICIENCY INITIAL TEST OUTCOME REPORT

Proficiency Cycle: 22C2

Receive Results By: 10/31/2022

Method: GC

Analyst Name: Gottal, Josephine

Your 22C2 Proficiency test outcome is: Satisfactory

Evaluation Procedure:

First Iteration: For each level, the qualified results reported by participating analysts and reference labs are pooled, the mean, standard deviation and acceptable range are calculated using truncation, and results outside the acceptable range are excluded from the second iteration.

Second iteration: The mean, standard deviation and acceptable range are recalculated using truncation, every analyst's qualified results are compared to the recalculated acceptable range, and every analyst is assigned an outcome for the proficiency cycle. All analysts with Results Outside Acceptable Range receive retest samples. The retest results are compared to the acceptable range established by the initial test and the retested analyst's outcome for the proficiency cycle is assigned based on the second comparison.

Test Type	Vial Level	Vial Number	Results #1 Reported	#1 Z Score	Results #2 Reported	#2 Z Score
I	C	2309	0.201	-1.000	0.202	-0.667
I	D	2409	0.143	-0.333	0.142	-0.667

Proficiency Cycle Statistics

Level	Lower Limit	Upper Limit	Mean (Avg)	Std Dev	N	Number Out Of Range	
						1st Iteration	2nd Iteration
A	0.109	0.121	0.115	0.002	118	1	0
B	0.071	0.083	0.077	0.002	116	1	0
C	0.195	0.213	0.204	0.003	114	2	0
D	0.135	0.153	0.144	0.003	118	1	0
E	0.219	0.243	0.231	0.004	120	0	0

Notes: Z Score is your reported analytical result compared to the mean in terms of the standard deviation, calculated as (Result-Mean)/Stdev. The Parameter n is the number of results reported which are used to calculate the second iteration mean and standard deviation.

Florida Department of Law Enforcement Alcohol Testing Program

BLOOD ALCOHOL PROFICIENCY INITIAL TEST OUTCOME REPORT

Proficiency Cycle: 22C2

Receive Results By: 10/19/2022

Method: GC

Analyst Name: Gramling, Gary

Your 22C2 Proficiency test outcome is: Unsatisfactory

Evaluation Procedure:

First Iteration: For each level, the qualified results reported by participating analysts and reference labs are pooled, the mean, standard deviation and acceptable range are calculated using truncation, and results outside the acceptable range are excluded from the second iteration.

Second iteration: The mean, standard deviation and acceptable range are recalculated using truncation, every analyst's qualified results are compared to the recalculated acceptable range, and every analyst is assigned an outcome for the proficiency cycle. All analysts with Results Outside Acceptable Range receive retest samples. The retest results are compared to the acceptable range established by the initial test and the retested analyst's outcome for the proficiency cycle is assigned based on the second comparison.

Test Type	Vial Level	Vial Number	Results #1 Reported	#1 Z Score	Results #2 Reported	#2 Z Score
I	A	2149	0.113	-1.000	0.112	-1.500
I	B	2248	0.076	-0.500	0.074	-1.500
I	C	2348	0.198	-1.250	0.188	-3.750
I	D	2449	0.141	-1.000	0.129	-5.000
I	E	2560	0.227	-1.000	0.224	-1.750

Proficiency Cycle Statistics

Level	Lower Limit	Upper Limit	Mean (Avg)	Std Dev	N	Number Out Of Range	
						1st Iteration	2nd Iteration
A	0.109	0.121	0.115	0.002	118	1	0
B	0.071	0.083	0.077	0.002	116	1	0
C	0.195	0.213	0.204	0.003	114	2	0
D	0.135	0.153	0.144	0.003	118	1	0
E	0.219	0.243	0.231	0.004	120	0	0

Notes: Z Score is your reported analytical result compared to the mean in terms of the standard deviation, calculated as (Result-Mean)/StddDev. The Parameter n is the number of results reported which are used to calculate the second iteration mean and standard deviation.

Florida Department of Law Enforcement Alcohol Testing Program

BLOOD ALCOHOL PROFICIENCY INITIAL TEST OUTCOME REPORT

Proficiency Cycle: 22C2

Receive Results By: 10/24/2022

Method: GC

Analyst Name: Grossmann, Hannah

Your 22C2 Proficiency test outcome is: Satisfactory

Evaluation Procedure:

First Iteration: For each level, the qualified results reported by participating analysts and reference labs are pooled, the mean, standard deviation and acceptable range are calculated using truncation, and results outside the acceptable range are excluded from the second iteration.

Second iteration: The mean, standard deviation and acceptable range are recalculated using truncation, every analyst's qualified results are compared to the recalculated acceptable range, and every analyst is assigned an outcome for the proficiency cycle. All analysts with Results Outside Acceptable Range receive retest samples. The retest results are compared to the acceptable range established by the initial test and the retested analyst's outcome for the proficiency cycle is assigned based on the second comparison.

Test Type	Vial Level	Vial Number	Results #1 Reported	#1 Z Score	Results #2 Reported	#2 Z Score
I	A	2109	0.112	-1.500	0.111	-2.000
I	E	2509	0.224	-1.750	0.226	-1.250

Proficiency Cycle Statistics

Level	Lower Limit	Upper Limit	Mean (Avg)	Std Dev	N	Number Out Of Range	
						1st Iteration	2nd Iteration
A	0.109	0.121	0.115	0.002	118	1	0
B	0.071	0.083	0.077	0.002	116	1	0
C	0.195	0.213	0.204	0.003	114	2	0
D	0.135	0.153	0.144	0.003	118	1	0
E	0.219	0.243	0.231	0.004	120	0	0

Notes: Z Score is your reported analytical result compared to the mean in terms of the standard deviation, calculated as (Result-Mean)/StddDev. The Parameter n is the number of results reported which are used to calculate the second iteration mean and standard deviation.

Florida Department of Law Enforcement Alcohol Testing Program

BLOOD ALCOHOL PROFICIENCY INITIAL TEST OUTCOME REPORT

Proficiency Cycle: 22C2

Receive Results By: 10/18/2022

Method: GC

Analyst Name: Haggard, Jamie

Your 22C2 Proficiency test outcome is: Satisfactory

Evaluation Procedure:

First Iteration: For each level, the qualified results reported by participating analysts and reference labs are pooled, the mean, standard deviation and acceptable range are calculated using truncation, and results outside the acceptable range are excluded from the second iteration.

Second iteration: The mean, standard deviation and acceptable range are recalculated using truncation, every analyst's qualified results are compared to the recalculated acceptable range, and every analyst is assigned an outcome for the proficiency cycle. All analysts with Results Outside Acceptable Range receive retest samples. The retest results are compared to the acceptable range established by the initial test and the retested analyst's outcome for the proficiency cycle is assigned based on the second comparison.

Test Type	Vial Level	Vial Number	Results #1 Reported	#1 Z Score	Results #2 Reported	#2 Z Score
I	A	2148	0.115	0.000	0.112	-1.500
I	B	2247	0.077	0.000	0.075	-1.000
I	C	2349	0.197	-2.333	0.198	-2.000
I	D	2448	0.143	-0.333	0.141	-1.000
I	E	2548	0.228	-0.750	0.226	-1.250

Proficiency Cycle Statistics

Level	Lower Limit	Upper Limit	Mean (Avg)	Std Dev	N	Number Out Of Range	
						1st Iteration	2nd Iteration
A	0.109	0.121	0.115	0.002	118	1	0
B	0.071	0.083	0.077	0.002	116	1	0
C	0.195	0.213	0.204	0.003	114	2	0
D	0.135	0.153	0.144	0.003	118	1	0
E	0.219	0.243	0.231	0.004	120	0	0

Notes: Z Score is your reported analytical result compared to the mean in terms of the standard deviation, calculated as (Result-Mean)/StddDev. The Parameter n is the number of results reported which are used to calculate the second iteration mean and standard deviation.

Florida Department of Law Enforcement Alcohol Testing Program

BLOOD ALCOHOL PROFICIENCY INITIAL TEST OUTCOME REPORT

Proficiency Cycle: 22C2

Receive Results By: 10/11/2022

Method: GC

Analyst Name: Hime, George

Your 22C2 Proficiency test outcome is: Satisfactory

Evaluation Procedure:

First Iteration: For each level, the qualified results reported by participating analysts and reference labs are pooled, the mean, standard deviation and acceptable range are calculated using truncation, and results outside the acceptable range are excluded from the second iteration.

Second iteration: The mean, standard deviation and acceptable range are recalculated using truncation, every analyst's qualified results are compared to the recalculated acceptable range, and every analyst is assigned an outcome for the proficiency cycle. All analysts with Results Outside Acceptable Range receive retest samples. The retest results are compared to the acceptable range established by the initial test and the retested analyst's outcome for the proficiency cycle is assigned based on the second comparison.

Test Type	Vial Level	Vial Number	Results #1 Reported	#1 Z Score	Results #2 Reported	#2 Z Score
I	B	2209	0.077	0.000	0.076	-0.500
I	C	2310	0.202	-0.667	0.200	-1.333

Proficiency Cycle Statistics

Level	Lower Limit	Upper Limit	Mean (Avg)	Std Dev	N	Number Out Of Range	
						1st Iteration	2nd Iteration
A	0.109	0.121	0.115	0.002	118	1	0
B	0.071	0.083	0.077	0.002	116	1	0
C	0.195	0.213	0.204	0.003	114	2	0
D	0.135	0.153	0.144	0.003	118	1	0
E	0.219	0.243	0.231	0.004	120	0	0

Notes: Z Score is your reported analytical result compared to the mean in terms of the standard deviation, calculated as (Result-Mean)/StddDev. The Parameter n is the number of results reported which are used to calculate the second iteration mean and standard deviation.

Florida Department of Law Enforcement Alcohol Testing Program

BLOOD ALCOHOL PROFICIENCY INITIAL TEST OUTCOME REPORT

Proficiency Cycle: 22C2

Receive Results By: 10/19/2022

Method: GC

Analyst Name: Hinds, Kelly

Your 22C2 Proficiency test outcome is: Satisfactory

Evaluation Procedure:

First Iteration: For each level, the qualified results reported by participating analysts and reference labs are pooled, the mean, standard deviation and acceptable range are calculated using truncation, and results outside the acceptable range are excluded from the second iteration.

Second iteration: The mean, standard deviation and acceptable range are recalculated using truncation, every analyst's qualified results are compared to the recalculated acceptable range, and every analyst is assigned an outcome for the proficiency cycle. All analysts with Results Outside Acceptable Range receive retest samples. The retest results are compared to the acceptable range established by the initial test and the retested analyst's outcome for the proficiency cycle is assigned based on the second comparison.

Test Type	Vial Level	Vial Number	Results #1 Reported	#1 Z Score	Results #2 Reported	#2 Z Score
I	D	2410	0.140	-1.333	0.139	-1.667
I	E	2510	0.230	-0.250	0.225	-1.500

Proficiency Cycle Statistics

Level	Lower Limit	Upper Limit	Mean (Avg)	Std Dev	N	Number Out Of Range	
						1st Iteration	2nd Iteration
A	0.109	0.121	0.115	0.002	118	1	0
B	0.071	0.083	0.077	0.002	116	1	0
C	0.195	0.213	0.204	0.003	114	2	0
D	0.135	0.153	0.144	0.003	118	1	0
E	0.219	0.243	0.231	0.004	120	0	0

Notes: Z Score is your reported analytical result compared to the mean in terms of the standard deviation, calculated as (Result-Mean)/StddDev. The Parameter n is the number of results reported which are used to calculate the second iteration mean and standard deviation.

Florida Department of Law Enforcement Alcohol Testing Program

BLOOD ALCOHOL PROFICIENCY INITIAL TEST OUTCOME REPORT

Proficiency Cycle: 22C2

Receive Results By: 11/07/2022

Method: GC

Analyst Name: Huene, Lauren

Your 22C2 Proficiency test outcome is: Satisfactory

Evaluation Procedure:

First Iteration: For each level, the qualified results reported by participating analysts and reference labs are pooled, the mean, standard deviation and acceptable range are calculated using truncation, and results outside the acceptable range are excluded from the second iteration.

Second iteration: The mean, standard deviation and acceptable range are recalculated using truncation, every analyst's qualified results are compared to the recalculated acceptable range, and every analyst is assigned an outcome for the proficiency cycle. All analysts with Results Outside Acceptable Range receive retest samples. The retest results are compared to the acceptable range established by the initial test and the retested analyst's outcome for the proficiency cycle is assigned based on the second comparison.

Test Type	Vial Level	Vial Number	Results #1 Reported	#1 Z Score	Results #2 Reported	#2 Z Score
I	A	2110	0.117	1.000	0.117	1.000
I	B	2210	0.077	0.000	0.078	0.500

Proficiency Cycle Statistics

Level	Lower Limit	Upper Limit	Mean (Avg)	Std Dev	N	Number Out Of Range	
						1st Iteration	2nd Iteration
A	0.109	0.121	0.115	0.002	118	1	0
B	0.071	0.083	0.077	0.002	116	1	0
C	0.195	0.213	0.204	0.003	114	2	0
D	0.135	0.153	0.144	0.003	118	1	0
E	0.219	0.243	0.231	0.004	120	0	0

Notes: Z Score is your reported analytical result compared to the mean in terms of the standard deviation, calculated as (Result-Mean)/Stdev. The Parameter n is the number of results reported which are used to calculate the second iteration mean and standard deviation.

Florida Department of Law Enforcement Alcohol Testing Program

BLOOD ALCOHOL PROFICIENCY INITIAL TEST OUTCOME REPORT

Proficiency Cycle: 22C2

Receive Results By: 11/02/2022

Method: GC

Analyst Name: Huene, Lauren

Your 22C2 Proficiency test outcome is: Satisfactory

Evaluation Procedure:

First Iteration: For each level, the qualified results reported by participating analysts and reference labs are pooled, the mean, standard deviation and acceptable range are calculated using truncation, and results outside the acceptable range are excluded from the second iteration.

Second iteration: The mean, standard deviation and acceptable range are recalculated using truncation, every analyst's qualified results are compared to the recalculated acceptable range, and every analyst is assigned an outcome for the proficiency cycle. All analysts with Results Outside Acceptable Range receive retest samples. The retest results are compared to the acceptable range established by the initial test and the retested analyst's outcome for the proficiency cycle is assigned based on the second comparison.

Test Type	Vial Level	Vial Number	Results #1 Reported	#1 Z Score	Results #2 Reported	#2 Z Score
I	C	2311	0.205	0.333	0.206	0.667
I	D	2411	0.144	0.000	0.145	0.333

Proficiency Cycle Statistics

Level	Lower Limit	Upper Limit	Mean (Avg)	Std Dev	N	Number Out Of Range	
						1st Iteration	2nd Iteration
A	0.109	0.121	0.115	0.002	118	1	0
B	0.071	0.083	0.077	0.002	116	1	0
C	0.195	0.213	0.204	0.003	114	2	0
D	0.135	0.153	0.144	0.003	118	1	0
E	0.219	0.243	0.231	0.004	120	0	0

Notes: Z Score is your reported analytical result compared to the mean in terms of the standard deviation, calculated as (Result-Mean)/StddDev. The Parameter n is the number of results reported which are used to calculate the second iteration mean and standard deviation.

Florida Department of Law Enforcement Alcohol Testing Program

BLOOD ALCOHOL PROFICIENCY INITIAL TEST OUTCOME REPORT

Proficiency Cycle: 22C2

Receive Results By: 11/02/2022

Method: GC

Analyst Name: Huene, Lauren

Your 22C2 Proficiency test outcome is: Satisfactory

Evaluation Procedure:

First Iteration: For each level, the qualified results reported by participating analysts and reference labs are pooled, the mean, standard deviation and acceptable range are calculated using truncation, and results outside the acceptable range are excluded from the second iteration.

Second iteration: The mean, standard deviation and acceptable range are recalculated using truncation, every analyst's qualified results are compared to the recalculated acceptable range, and every analyst is assigned an outcome for the proficiency cycle. All analysts with Results Outside Acceptable Range receive retest samples. The retest results are compared to the acceptable range established by the initial test and the retested analyst's outcome for the proficiency cycle is assigned based on the second comparison.

Test Type	Vial Level	Vial Number	Results #1 Reported	#1 Z Score	Results #2 Reported	#2 Z Score
I	A	2111	0.118	1.500	0.117	1.000
I	E	2511	0.237	1.500	0.235	1.000

Proficiency Cycle Statistics

Level	Lower Limit	Upper Limit	Mean (Avg)	Std Dev	N	Number Out Of Range	
						1st Iteration	2nd Iteration
A	0.109	0.121	0.115	0.002	118	1	0
B	0.071	0.083	0.077	0.002	116	1	0
C	0.195	0.213	0.204	0.003	114	2	0
D	0.135	0.153	0.144	0.003	118	1	0
E	0.219	0.243	0.231	0.004	120	0	0

Notes: Z Score is your reported analytical result compared to the mean in terms of the standard deviation, calculated as (Result-Mean)/StddDev. The Parameter n is the number of results reported which are used to calculate the second iteration mean and standard deviation.

Florida Department of Law Enforcement Alcohol Testing Program

BLOOD ALCOHOL PROFICIENCY INITIAL TEST OUTCOME REPORT

Proficiency Cycle: 22C2

Receive Results By: 10/17/2022

Method: GC

Analyst Name: Humphrey, Susan

Your 22C2 Proficiency test outcome is: Satisfactory

Evaluation Procedure:

First Iteration: For each level, the qualified results reported by participating analysts and reference labs are pooled, the mean, standard deviation and acceptable range are calculated using truncation, and results outside the acceptable range are excluded from the second iteration.

Second iteration: The mean, standard deviation and acceptable range are recalculated using truncation, every analyst's qualified results are compared to the recalculated acceptable range, and every analyst is assigned an outcome for the proficiency cycle. All analysts with Results Outside Acceptable Range receive retest samples. The retest results are compared to the acceptable range established by the initial test and the retested analyst's outcome for the proficiency cycle is assigned based on the second comparison.

Test Type	Vial Level	Vial Number	Results #1 Reported	#1 Z Score	Results #2 Reported	#2 Z Score
I	B	2211	0.076	-0.500	0.077	0.000
I	C	2312	0.203	-0.333	0.203	-0.333

Proficiency Cycle Statistics

Level	Lower Limit	Upper Limit	Mean (Avg)	Std Dev	N	Number Out Of Range	
						1st Iteration	2nd Iteration
A	0.109	0.121	0.115	0.002	118	1	0
B	0.071	0.083	0.077	0.002	116	1	0
C	0.195	0.213	0.204	0.003	114	2	0
D	0.135	0.153	0.144	0.003	118	1	0
E	0.219	0.243	0.231	0.004	120	0	0

Notes: Z Score is your reported analytical result compared to the mean in terms of the standard deviation, calculated as (Result-Mean)/StddDev. The Parameter n is the number of results reported which are used to calculate the second iteration mean and standard deviation.

Florida Department of Law Enforcement Alcohol Testing Program

BLOOD ALCOHOL PROFICIENCY INITIAL TEST OUTCOME REPORT

Proficiency Cycle: 22C2

Receive Results By: 10/25/2022

Method: GC

Analyst Name: Jean, Kenson

Your 22C2 Proficiency test outcome is: Satisfactory

Evaluation Procedure:

First Iteration: For each level, the qualified results reported by participating analysts and reference labs are pooled, the mean, standard deviation and acceptable range are calculated using truncation, and results outside the acceptable range are excluded from the second iteration.

Second iteration: The mean, standard deviation and acceptable range are recalculated using truncation, every analyst's qualified results are compared to the recalculated acceptable range, and every analyst is assigned an outcome for the proficiency cycle. All analysts with Results Outside Acceptable Range receive retest samples. The retest results are compared to the acceptable range established by the initial test and the retested analyst's outcome for the proficiency cycle is assigned based on the second comparison.

Test Type	Vial Level	Vial Number	Results #1 Reported	#1 Z Score	Results #2 Reported	#2 Z Score
I	D	2412	0.142	-0.667	0.144	0.000
I	E	2512	0.231	0.000	0.231	0.000

Proficiency Cycle Statistics

Level	Lower Limit	Upper Limit	Mean (Avg)	Std Dev	N	Number Out Of Range	
						1st Iteration	2nd Iteration
A	0.109	0.121	0.115	0.002	118	1	0
B	0.071	0.083	0.077	0.002	116	1	0
C	0.195	0.213	0.204	0.003	114	2	0
D	0.135	0.153	0.144	0.003	118	1	0
E	0.219	0.243	0.231	0.004	120	0	0

Notes: Z Score is your reported analytical result compared to the mean in terms of the standard deviation, calculated as (Result-Mean)/StddDev. The Parameter n is the number of results reported which are used to calculate the second iteration mean and standard deviation.

Florida Department of Law Enforcement Alcohol Testing Program

BLOOD ALCOHOL PROFICIENCY INITIAL TEST OUTCOME REPORT

Proficiency Cycle: 22C2

Receive Results By: 10/25/2022

Method: GC

Analyst Name: Jean, Kenson

Your 22C2 Proficiency test outcome is: Satisfactory

Evaluation Procedure:

First Iteration: For each level, the qualified results reported by participating analysts and reference labs are pooled, the mean, standard deviation and acceptable range are calculated using truncation, and results outside the acceptable range are excluded from the second iteration.

Second iteration: The mean, standard deviation and acceptable range are recalculated using truncation, every analyst's qualified results are compared to the recalculated acceptable range, and every analyst is assigned an outcome for the proficiency cycle. All analysts with Results Outside Acceptable Range receive retest samples. The retest results are compared to the acceptable range established by the initial test and the retested analyst's outcome for the proficiency cycle is assigned based on the second comparison.

Test Type	Vial Level	Vial Number	Results #1 Reported	#1 Z Score	Results #2 Reported	#2 Z Score
I	A	2120	0.114	-0.500	0.115	0.000
I	B	2220	0.075	-1.000	0.076	-0.500

Proficiency Cycle Statistics

Level	Lower Limit	Upper Limit	Mean (Avg)	Std Dev	N	Number Out Of Range	
						1st Iteration	2nd Iteration
A	0.109	0.121	0.115	0.002	118	1	0
B	0.071	0.083	0.077	0.002	116	1	0
C	0.195	0.213	0.204	0.003	114	2	0
D	0.135	0.153	0.144	0.003	118	1	0
E	0.219	0.243	0.231	0.004	120	0	0

Notes: Z Score is your reported analytical result compared to the mean in terms of the standard deviation, calculated as (Result-Mean)/StddDev. The Parameter n is the number of results reported which are used to calculate the second iteration mean and standard deviation.

Florida Department of Law Enforcement Alcohol Testing Program

BLOOD ALCOHOL PROFICIENCY INITIAL TEST OUTCOME REPORT

Proficiency Cycle: 22C2

Receive Results By: 11/10/2022

Method: GC

Analyst Name: Johnston, Jessica

Your 22C2 Proficiency test outcome is: Satisfactory

Evaluation Procedure:

First Iteration: For each level, the qualified results reported by participating analysts and reference labs are pooled, the mean, standard deviation and acceptable range are calculated using truncation, and results outside the acceptable range are excluded from the second iteration.

Second iteration: The mean, standard deviation and acceptable range are recalculated using truncation, every analyst's qualified results are compared to the recalculated acceptable range, and every analyst is assigned an outcome for the proficiency cycle. All analysts with Results Outside Acceptable Range receive retest samples. The retest results are compared to the acceptable range established by the initial test and the retested analyst's outcome for the proficiency cycle is assigned based on the second comparison.

Test Type	Vial Level	Vial Number	Results #1 Reported	#1 Z Score	Results #2 Reported	#2 Z Score
I	A	2167	0.116	0.500	0.115	0.000
I	B	2267	0.076	-0.500	0.076	-0.500
I	C	2366	0.206	0.667	0.206	0.667
I	D	2467	0.145	0.333	0.145	0.333
I	E	2556	0.234	0.750	0.234	0.750

Proficiency Cycle Statistics

Level	Lower Limit	Upper Limit	Mean (Avg)	Std Dev	N	Number Out Of Range	
						1st Iteration	2nd Iteration
A	0.109	0.121	0.115	0.002	118	1	0
B	0.071	0.083	0.077	0.002	116	1	0
C	0.195	0.213	0.204	0.003	114	2	0
D	0.135	0.153	0.144	0.003	118	1	0
E	0.219	0.243	0.231	0.004	120	0	0

Notes: Z Score is your reported analytical result compared to the mean in terms of the standard deviation, calculated as (Result-Mean)/StddDev. The Parameter n is the number of results reported which are used to calculate the second iteration mean and standard deviation.

Florida Department of Law Enforcement Alcohol Testing Program

BLOOD ALCOHOL PROFICIENCY INITIAL TEST OUTCOME REPORT

Proficiency Cycle: 22C2

Receive Results By: 10/19/2022

Method: GC

Analyst Name: Kahl, Joseph

Your 22C2 Proficiency test outcome is: Satisfactory

Evaluation Procedure:

First Iteration: For each level, the qualified results reported by participating analysts and reference labs are pooled, the mean, standard deviation and acceptable range are calculated using truncation, and results outside the acceptable range are excluded from the second iteration.

Second iteration: The mean, standard deviation and acceptable range are recalculated using truncation, every analyst's qualified results are compared to the recalculated acceptable range, and every analyst is assigned an outcome for the proficiency cycle. All analysts with Results Outside Acceptable Range receive retest samples. The retest results are compared to the acceptable range established by the initial test and the retested analyst's outcome for the proficiency cycle is assigned based on the second comparison.

Test Type	Vial Level	Vial Number	Results #1 Reported	#1 Z Score	Results #2 Reported	#2 Z Score
I	C	2313	0.202	-0.667	0.201	-1.000
I	D	2413	0.143	-0.333	0.142	-0.667

Proficiency Cycle Statistics

Level	Lower Limit	Upper Limit	Mean (Avg)	Std Dev	N	Number Out Of Range	
						1st Iteration	2nd Iteration
A	0.109	0.121	0.115	0.002	118	1	0
B	0.071	0.083	0.077	0.002	116	1	0
C	0.195	0.213	0.204	0.003	114	2	0
D	0.135	0.153	0.144	0.003	118	1	0
E	0.219	0.243	0.231	0.004	120	0	0

Notes: Z Score is your reported analytical result compared to the mean in terms of the standard deviation, calculated as (Result-Mean)/StddDev. The Parameter n is the number of results reported which are used to calculate the second iteration mean and standard deviation.

Florida Department of Law Enforcement Alcohol Testing Program

BLOOD ALCOHOL PROFICIENCY INITIAL TEST OUTCOME REPORT

Proficiency Cycle: 22C2

Receive Results By: 11/01/2022

Method: GC

Analyst Name: Kahl, Kristin

Your 22C2 Proficiency test outcome is: Satisfactory

Evaluation Procedure:

First Iteration: For each level, the qualified results reported by participating analysts and reference labs are pooled, the mean, standard deviation and acceptable range are calculated using truncation, and results outside the acceptable range are excluded from the second iteration.

Second iteration: The mean, standard deviation and acceptable range are recalculated using truncation, every analyst's qualified results are compared to the recalculated acceptable range, and every analyst is assigned an outcome for the proficiency cycle. All analysts with Results Outside Acceptable Range receive retest samples. The retest results are compared to the acceptable range established by the initial test and the retested analyst's outcome for the proficiency cycle is assigned based on the second comparison.

Test Type	Vial Level	Vial Number	Results #1 Reported	#1 Z Score	Results #2 Reported	#2 Z Score
I	A	2112	0.114	-0.500	0.114	-0.500
I	E	2513	0.231	0.000	0.230	-0.250

Proficiency Cycle Statistics

Level	Lower Limit	Upper Limit	Mean (Avg)	Std Dev	N	Number Out Of Range	
						1st Iteration	2nd Iteration
A	0.109	0.121	0.115	0.002	118	1	0
B	0.071	0.083	0.077	0.002	116	1	0
C	0.195	0.213	0.204	0.003	114	2	0
D	0.135	0.153	0.144	0.003	118	1	0
E	0.219	0.243	0.231	0.004	120	0	0

Notes: Z Score is your reported analytical result compared to the mean in terms of the standard deviation, calculated as (Result-Mean)/StddDev. The Parameter n is the number of results reported which are used to calculate the second iteration mean and standard deviation.

Florida Department of Law Enforcement Alcohol Testing Program

BLOOD ALCOHOL PROFICIENCY INITIAL TEST OUTCOME REPORT

Proficiency Cycle: 22C2

Receive Results By: 11/01/2022

Method: GC

Analyst Name: Kahl, Kristin

Your 22C2 Proficiency test outcome is: Satisfactory

Evaluation Procedure:

First Iteration: For each level, the qualified results reported by participating analysts and reference labs are pooled, the mean, standard deviation and acceptable range are calculated using truncation, and results outside the acceptable range are excluded from the second iteration.

Second iteration: The mean, standard deviation and acceptable range are recalculated using truncation, every analyst's qualified results are compared to the recalculated acceptable range, and every analyst is assigned an outcome for the proficiency cycle. All analysts with Results Outside Acceptable Range receive retest samples. The retest results are compared to the acceptable range established by the initial test and the retested analyst's outcome for the proficiency cycle is assigned based on the second comparison.

Test Type	Vial Level	Vial Number	Results #1 Reported	#1 Z Score	Results #2 Reported	#2 Z Score
I	B	2212	0.076	-0.500	0.076	-0.500
I	C	2314	0.207	1.000	0.204	0.000

Proficiency Cycle Statistics

Level	Lower Limit	Upper Limit	Mean (Avg)	Std Dev	N	Number Out Of Range	
						1st Iteration	2nd Iteration
A	0.109	0.121	0.115	0.002	118	1	0
B	0.071	0.083	0.077	0.002	116	1	0
C	0.195	0.213	0.204	0.003	114	2	0
D	0.135	0.153	0.144	0.003	118	1	0
E	0.219	0.243	0.231	0.004	120	0	0

Notes: Z Score is your reported analytical result compared to the mean in terms of the standard deviation, calculated as (Result-Mean)/StddDev. The Parameter n is the number of results reported which are used to calculate the second iteration mean and standard deviation.

Florida Department of Law Enforcement Alcohol Testing Program

BLOOD ALCOHOL PROFICIENCY INITIAL TEST OUTCOME REPORT

Proficiency Cycle: 22C2

Receive Results By: 10/17/2022

Method: GC

Analyst Name: Kamandulis, Linet

Your 22C2 Proficiency test outcome is: Satisfactory

Evaluation Procedure:

First Iteration: For each level, the qualified results reported by participating analysts and reference labs are pooled, the mean, standard deviation and acceptable range are calculated using truncation, and results outside the acceptable range are excluded from the second iteration.

Second iteration: The mean, standard deviation and acceptable range are recalculated using truncation, every analyst's qualified results are compared to the recalculated acceptable range, and every analyst is assigned an outcome for the proficiency cycle. All analysts with Results Outside Acceptable Range receive retest samples. The retest results are compared to the acceptable range established by the initial test and the retested analyst's outcome for the proficiency cycle is assigned based on the second comparison.

Test Type	Vial Level	Vial Number	Results #1 Reported	#1 Z Score	Results #2 Reported	#2 Z Score
I	D	2414	0.145	0.333	0.145	0.333
I	E	2514	0.233	0.500	0.233	0.500

Proficiency Cycle Statistics

Level	Lower Limit	Upper Limit	Mean (Avg)	Std Dev	N	Number Out Of Range	
						1st Iteration	2nd Iteration
A	0.109	0.121	0.115	0.002	118	1	0
B	0.071	0.083	0.077	0.002	116	1	0
C	0.195	0.213	0.204	0.003	114	2	0
D	0.135	0.153	0.144	0.003	118	1	0
E	0.219	0.243	0.231	0.004	120	0	0

Notes: Z Score is your reported analytical result compared to the mean in terms of the standard deviation, calculated as (Result-Mean)/StddDev. The Parameter n is the number of results reported which are used to calculate the second iteration mean and standard deviation.

Florida Department of Law Enforcement Alcohol Testing Program

BLOOD ALCOHOL PROFICIENCY INITIAL TEST OUTCOME REPORT

Proficiency Cycle: 22C2

Receive Results By: 10/17/2022

Method: GC

Analyst Name: Kamandulis, Linet

Your 22C2 Proficiency test outcome is: Satisfactory

Evaluation Procedure:

First Iteration: For each level, the qualified results reported by participating analysts and reference labs are pooled, the mean, standard deviation and acceptable range are calculated using truncation, and results outside the acceptable range are excluded from the second iteration.

Second iteration: The mean, standard deviation and acceptable range are recalculated using truncation, every analyst's qualified results are compared to the recalculated acceptable range, and every analyst is assigned an outcome for the proficiency cycle. All analysts with Results Outside Acceptable Range receive retest samples. The retest results are compared to the acceptable range established by the initial test and the retested analyst's outcome for the proficiency cycle is assigned based on the second comparison.

Test Type	Vial Level	Vial Number	Results #1 Reported	#1 Z Score	Results #2 Reported	#2 Z Score
I	A	2113	0.116	0.500	0.117	1.000
I	B	2213	0.078	0.500	0.078	0.500

Proficiency Cycle Statistics

Level	Lower Limit	Upper Limit	Mean (Avg)	Std Dev	N	Number Out Of Range	
						1st Iteration	2nd Iteration
A	0.109	0.121	0.115	0.002	118	1	0
B	0.071	0.083	0.077	0.002	116	1	0
C	0.195	0.213	0.204	0.003	114	2	0
D	0.135	0.153	0.144	0.003	118	1	0
E	0.219	0.243	0.231	0.004	120	0	0

Notes: Z Score is your reported analytical result compared to the mean in terms of the standard deviation, calculated as (Result-Mean)/StddDev. The Parameter n is the number of results reported which are used to calculate the second iteration mean and standard deviation.

Florida Department of Law Enforcement Alcohol Testing Program

BLOOD ALCOHOL PROFICIENCY INITIAL TEST OUTCOME REPORT

Proficiency Cycle: 22C2

Receive Results By: 10/14/2022

Method: GC

Analyst Name: Kloss, Julie

Your 22C2 Proficiency test outcome is: Unsatisfactory

Evaluation Procedure:

First Iteration: For each level, the qualified results reported by participating analysts and reference labs are pooled, the mean, standard deviation and acceptable range are calculated using truncation, and results outside the acceptable range are excluded from the second iteration.

Second iteration: The mean, standard deviation and acceptable range are recalculated using truncation, every analyst's qualified results are compared to the recalculated acceptable range, and every analyst is assigned an outcome for the proficiency cycle. All analysts with Results Outside Acceptable Range receive retest samples. The retest results are compared to the acceptable range established by the initial test and the retested analyst's outcome for the proficiency cycle is assigned based on the second comparison.

Test Type	Vial Level	Vial Number	Results #1 Reported	#1 Z Score	Results #2 Reported	#2 Z Score
I	A	2158	0.123	4.000	0.118	1.500
I	B	2259	0.083	3.000	0.079	1.000
I	C	2345	0.210	1.750	0.210	1.750
I	D	2442	0.153	3.000	0.148	1.333
I	E	2559	0.238	1.750	0.235	1.000

Proficiency Cycle Statistics

Level	Lower Limit	Upper Limit	Mean (Avg)	Std Dev	N	Number Out Of Range	
						1st Iteration	2nd Iteration
A	0.109	0.121	0.115	0.002	118	1	0
B	0.071	0.083	0.077	0.002	116	1	0
C	0.195	0.213	0.204	0.003	114	2	0
D	0.135	0.153	0.144	0.003	118	1	0
E	0.219	0.243	0.231	0.004	120	0	0

Notes: Z Score is your reported analytical result compared to the mean in terms of the standard deviation, calculated as (Result-Mean)/StddDev. The Parameter n is the number of results reported which are used to calculate the second iteration mean and standard deviation.

Florida Department of Law Enforcement Alcohol Testing Program

BLOOD ALCOHOL PROFICIENCY INITIAL TEST OUTCOME REPORT

Proficiency Cycle: 22C2

Receive Results By: 10/25/2022

Method: GC

Analyst Name: Kopp, Emily

Your 22C2 Proficiency test outcome is: Satisfactory

Evaluation Procedure:

First Iteration: For each level, the qualified results reported by participating analysts and reference labs are pooled, the mean, standard deviation and acceptable range are calculated using truncation, and results outside the acceptable range are excluded from the second iteration.

Second iteration: The mean, standard deviation and acceptable range are recalculated using truncation, every analyst's qualified results are compared to the recalculated acceptable range, and every analyst is assigned an outcome for the proficiency cycle. All analysts with Results Outside Acceptable Range receive retest samples. The retest results are compared to the acceptable range established by the initial test and the retested analyst's outcome for the proficiency cycle is assigned based on the second comparison.

Test Type	Vial Level	Vial Number	Results #1 Reported	#1 Z Score	Results #2 Reported	#2 Z Score
I	A	2114	0.110	-2.500	0.112	-1.500
I	E	2515	0.225	-1.500	0.226	-1.250

Proficiency Cycle Statistics

Level	Lower Limit	Upper Limit	Mean (Avg)	Std Dev	N	Number Out Of Range	
						1st Iteration	2nd Iteration
A	0.109	0.121	0.115	0.002	118	1	0
B	0.071	0.083	0.077	0.002	116	1	0
C	0.195	0.213	0.204	0.003	114	2	0
D	0.135	0.153	0.144	0.003	118	1	0
E	0.219	0.243	0.231	0.004	120	0	0

Notes: Z Score is your reported analytical result compared to the mean in terms of the standard deviation, calculated as (Result-Mean)/StddDev. The Parameter n is the number of results reported which are used to calculate the second iteration mean and standard deviation.

Florida Department of Law Enforcement Alcohol Testing Program

BLOOD ALCOHOL PROFICIENCY INITIAL TEST OUTCOME REPORT

Proficiency Cycle: 22C2

Receive Results By: 10/15/2022

Method: GC

Analyst Name: Kunsman, Gary

Your 22C2 Proficiency test outcome is: Satisfactory

Evaluation Procedure:

First Iteration: For each level, the qualified results reported by participating analysts and reference labs are pooled, the mean, standard deviation and acceptable range are calculated using truncation, and results outside the acceptable range are excluded from the second iteration.

Second iteration: The mean, standard deviation and acceptable range are recalculated using truncation, every analyst's qualified results are compared to the recalculated acceptable range, and every analyst is assigned an outcome for the proficiency cycle. All analysts with Results Outside Acceptable Range receive retest samples. The retest results are compared to the acceptable range established by the initial test and the retested analyst's outcome for the proficiency cycle is assigned based on the second comparison.

Test Type	Vial Level	Vial Number	Results #1 Reported	#1 Z Score	Results #2 Reported	#2 Z Score
I	B	2214	0.078	0.500	0.077	0.000
I	C	2316	0.201	-1.000	0.202	-0.667

Proficiency Cycle Statistics

Level	Lower Limit	Upper Limit	Mean (Avg)	Std Dev	N	Number Out Of Range	
						1st Iteration	2nd Iteration
A	0.109	0.121	0.115	0.002	118	1	0
B	0.071	0.083	0.077	0.002	116	1	0
C	0.195	0.213	0.204	0.003	114	2	0
D	0.135	0.153	0.144	0.003	118	1	0
E	0.219	0.243	0.231	0.004	120	0	0

Notes: Z Score is your reported analytical result compared to the mean in terms of the standard deviation, calculated as (Result-Mean)/StddDev. The Parameter n is the number of results reported which are used to calculate the second iteration mean and standard deviation.

Florida Department of Law Enforcement Alcohol Testing Program

BLOOD ALCOHOL PROFICIENCY INITIAL TEST OUTCOME REPORT

Proficiency Cycle: 22C2

Receive Results By: 10/19/2022

Method: GC

Analyst Name: Leifheit, Nicole

Your 22C2 Proficiency test outcome is: Satisfactory

Evaluation Procedure:

First Iteration: For each level, the qualified results reported by participating analysts and reference labs are pooled, the mean, standard deviation and acceptable range are calculated using truncation, and results outside the acceptable range are excluded from the second iteration.

Second iteration: The mean, standard deviation and acceptable range are recalculated using truncation, every analyst's qualified results are compared to the recalculated acceptable range, and every analyst is assigned an outcome for the proficiency cycle. All analysts with Results Outside Acceptable Range receive retest samples. The retest results are compared to the acceptable range established by the initial test and the retested analyst's outcome for the proficiency cycle is assigned based on the second comparison.

Test Type	Vial Level	Vial Number	Results #1 Reported	#1 Z Score	Results #2 Reported	#2 Z Score
I	D	2416	0.147	1.000	0.147	1.000
I	E	2516	0.235	1.000	0.234	0.750

Proficiency Cycle Statistics

Level	Lower Limit	Upper Limit	Mean (Avg)	Std Dev	N	Number Out Of Range	
						1st Iteration	2nd Iteration
A	0.109	0.121	0.115	0.002	118	1	0
B	0.071	0.083	0.077	0.002	116	1	0
C	0.195	0.213	0.204	0.003	114	2	0
D	0.135	0.153	0.144	0.003	118	1	0
E	0.219	0.243	0.231	0.004	120	0	0

Notes: Z Score is your reported analytical result compared to the mean in terms of the standard deviation, calculated as (Result-Mean)/StddDev. The Parameter n is the number of results reported which are used to calculate the second iteration mean and standard deviation.

Florida Department of Law Enforcement Alcohol Testing Program

BLOOD ALCOHOL PROFICIENCY INITIAL TEST OUTCOME REPORT

Proficiency Cycle: 22C2

Receive Results By: 10/28/2022

Method: GC

Analyst Name: Leifheit, Nicole

Your 22C2 Proficiency test outcome is: Satisfactory

Evaluation Procedure:

First Iteration: For each level, the qualified results reported by participating analysts and reference labs are pooled, the mean, standard deviation and acceptable range are calculated using truncation, and results outside the acceptable range are excluded from the second iteration.

Second iteration: The mean, standard deviation and acceptable range are recalculated using truncation, every analyst's qualified results are compared to the recalculated acceptable range, and every analyst is assigned an outcome for the proficiency cycle. All analysts with Results Outside Acceptable Range receive retest samples. The retest results are compared to the acceptable range established by the initial test and the retested analyst's outcome for the proficiency cycle is assigned based on the second comparison.

Test Type	Vial Level	Vial Number	Results #1 Reported	#1 Z Score	Results #2 Reported	#2 Z Score
I	A	2119	0.115	0.000	0.115	0.000
I	B	2215	0.078	0.500	0.080	1.500

Proficiency Cycle Statistics

Level	Lower Limit	Upper Limit	Mean (Avg)	Std Dev	N	Number Out Of Range	
						1st Iteration	2nd Iteration
A	0.109	0.121	0.115	0.002	118	1	0
B	0.071	0.083	0.077	0.002	116	1	0
C	0.195	0.213	0.204	0.003	114	2	0
D	0.135	0.153	0.144	0.003	118	1	0
E	0.219	0.243	0.231	0.004	120	0	0

Notes: Z Score is your reported analytical result compared to the mean in terms of the standard deviation, calculated as (Result-Mean)/Stdev. The Parameter n is the number of results reported which are used to calculate the second iteration mean and standard deviation.

Florida Department of Law Enforcement Alcohol Testing Program

BLOOD ALCOHOL PROFICIENCY INITIAL TEST OUTCOME REPORT

Proficiency Cycle: 22C2

Receive Results By: 10/19/2022

Method: GC

Analyst Name: Leifheit, Nicole

Your 22C2 Proficiency test outcome is: Satisfactory

Evaluation Procedure:

First Iteration: For each level, the qualified results reported by participating analysts and reference labs are pooled, the mean, standard deviation and acceptable range are calculated using truncation, and results outside the acceptable range are excluded from the second iteration.

Second iteration: The mean, standard deviation and acceptable range are recalculated using truncation, every analyst's qualified results are compared to the recalculated acceptable range, and every analyst is assigned an outcome for the proficiency cycle. All analysts with Results Outside Acceptable Range receive retest samples. The retest results are compared to the acceptable range established by the initial test and the retested analyst's outcome for the proficiency cycle is assigned based on the second comparison.

Test Type	Vial Level	Vial Number	Results #1 Reported	#1 Z Score	Results #2 Reported	#2 Z Score
I	C	2317	0.208	1.333	0.208	1.333
I	D	2417	0.147	1.000	0.148	1.333

Proficiency Cycle Statistics

Level	Lower Limit	Upper Limit	Mean (Avg)	Std Dev	N	Number Out Of Range	
						1st Iteration	2nd Iteration
A	0.109	0.121	0.115	0.002	118	1	0
B	0.071	0.083	0.077	0.002	116	1	0
C	0.195	0.213	0.204	0.003	114	2	0
D	0.135	0.153	0.144	0.003	118	1	0
E	0.219	0.243	0.231	0.004	120	0	0

Notes: Z Score is your reported analytical result compared to the mean in terms of the standard deviation, calculated as (Result-Mean)/StddDev. The Parameter n is the number of results reported which are used to calculate the second iteration mean and standard deviation.

Florida Department of Law Enforcement Alcohol Testing Program

BLOOD ALCOHOL PROFICIENCY INITIAL TEST OUTCOME REPORT

Proficiency Cycle: 22C2

Receive Results By: 10/19/2022

Method: GC

Analyst Name: Lewis, Jennifer

Your 22C2 Proficiency test outcome is: Satisfactory

Evaluation Procedure:

First Iteration: For each level, the qualified results reported by participating analysts and reference labs are pooled, the mean, standard deviation and acceptable range are calculated using truncation, and results outside the acceptable range are excluded from the second iteration.

Second iteration: The mean, standard deviation and acceptable range are recalculated using truncation, every analyst's qualified results are compared to the recalculated acceptable range, and every analyst is assigned an outcome for the proficiency cycle. All analysts with Results Outside Acceptable Range receive retest samples. The retest results are compared to the acceptable range established by the initial test and the retested analyst's outcome for the proficiency cycle is assigned based on the second comparison.

Test Type	Vial Level	Vial Number	Results #1 Reported	#1 Z Score	Results #2 Reported	#2 Z Score
I	A	2115	0.117	1.000	0.117	1.000
I	E	2520	0.232	0.250	0.232	0.250

Proficiency Cycle Statistics

Level	Lower Limit	Upper Limit	Mean (Avg)	Std Dev	N	Number Out Of Range	
						1st Iteration	2nd Iteration
A	0.109	0.121	0.115	0.002	118	1	0
B	0.071	0.083	0.077	0.002	116	1	0
C	0.195	0.213	0.204	0.003	114	2	0
D	0.135	0.153	0.144	0.003	118	1	0
E	0.219	0.243	0.231	0.004	120	0	0

Notes: Z Score is your reported analytical result compared to the mean in terms of the standard deviation, calculated as (Result-Mean)/StddDev. The Parameter n is the number of results reported which are used to calculate the second iteration mean and standard deviation.

Florida Department of Law Enforcement Alcohol Testing Program

BLOOD ALCOHOL PROFICIENCY INITIAL TEST OUTCOME REPORT

Proficiency Cycle: 22C2

Receive Results By: 10/19/2022

Method: GC

Analyst Name: Lewis, Jennifer

Your 22C2 Proficiency test outcome is: Satisfactory

Evaluation Procedure:

First Iteration: For each level, the qualified results reported by participating analysts and reference labs are pooled, the mean, standard deviation and acceptable range are calculated using truncation, and results outside the acceptable range are excluded from the second iteration.

Second iteration: The mean, standard deviation and acceptable range are recalculated using truncation, every analyst's qualified results are compared to the recalculated acceptable range, and every analyst is assigned an outcome for the proficiency cycle. All analysts with Results Outside Acceptable Range receive retest samples. The retest results are compared to the acceptable range established by the initial test and the retested analyst's outcome for the proficiency cycle is assigned based on the second comparison.

Test Type	Vial Level	Vial Number	Results #1 Reported	#1 Z Score	Results #2 Reported	#2 Z Score
I	B	2219	0.078	0.500	0.078	0.500
I	C	2318	0.203	-0.333	0.204	0.000

Proficiency Cycle Statistics

Level	Lower Limit	Upper Limit	Mean (Avg)	Std Dev	N	Number Out Of Range	
						1st Iteration	2nd Iteration
A	0.109	0.121	0.115	0.002	118	1	0
B	0.071	0.083	0.077	0.002	116	1	0
C	0.195	0.213	0.204	0.003	114	2	0
D	0.135	0.153	0.144	0.003	118	1	0
E	0.219	0.243	0.231	0.004	120	0	0

Notes: Z Score is your reported analytical result compared to the mean in terms of the standard deviation, calculated as (Result-Mean)/StddDev. The Parameter n is the number of results reported which are used to calculate the second iteration mean and standard deviation.

Florida Department of Law Enforcement Alcohol Testing Program

BLOOD ALCOHOL PROFICIENCY INITIAL TEST OUTCOME REPORT

Proficiency Cycle: 22C2

Receive Results By: 10/25/2022

Method: GC

Analyst Name: Maragh, Sharin

Your 22C2 Proficiency test outcome is: Satisfactory

Evaluation Procedure:

First Iteration: For each level, the qualified results reported by participating analysts and reference labs are pooled, the mean, standard deviation and acceptable range are calculated using truncation, and results outside the acceptable range are excluded from the second iteration.

Second iteration: The mean, standard deviation and acceptable range are recalculated using truncation, every analyst's qualified results are compared to the recalculated acceptable range, and every analyst is assigned an outcome for the proficiency cycle. All analysts with Results Outside Acceptable Range receive retest samples. The retest results are compared to the acceptable range established by the initial test and the retested analyst's outcome for the proficiency cycle is assigned based on the second comparison.

Test Type	Vial Level	Vial Number	Results #1 Reported	#1 Z Score	Results #2 Reported	#2 Z Score
I	D	2418	0.140	-1.333	0.140	-1.333
I	E	2517	0.232	0.250	0.232	0.250

Proficiency Cycle Statistics

Level	Lower Limit	Upper Limit	Mean (Avg)	Std Dev	N	Number Out Of Range	
						1st Iteration	2nd Iteration
A	0.109	0.121	0.115	0.002	118	1	0
B	0.071	0.083	0.077	0.002	116	1	0
C	0.195	0.213	0.204	0.003	114	2	0
D	0.135	0.153	0.144	0.003	118	1	0
E	0.219	0.243	0.231	0.004	120	0	0

Notes: Z Score is your reported analytical result compared to the mean in terms of the standard deviation, calculated as (Result-Mean)/StddDev. The Parameter n is the number of results reported which are used to calculate the second iteration mean and standard deviation.

Florida Department of Law Enforcement Alcohol Testing Program

BLOOD ALCOHOL PROFICIENCY INITIAL TEST OUTCOME REPORT

Proficiency Cycle: 22C2

Receive Results By: 10/25/2022

Method: GC

Analyst Name: Mark, Amy

Your 22C2 Proficiency test outcome is: Satisfactory

Evaluation Procedure:

First Iteration: For each level, the qualified results reported by participating analysts and reference labs are pooled, the mean, standard deviation and acceptable range are calculated using truncation, and results outside the acceptable range are excluded from the second iteration.

Second iteration: The mean, standard deviation and acceptable range are recalculated using truncation, every analyst's qualified results are compared to the recalculated acceptable range, and every analyst is assigned an outcome for the proficiency cycle. All analysts with Results Outside Acceptable Range receive retest samples. The retest results are compared to the acceptable range established by the initial test and the retested analyst's outcome for the proficiency cycle is assigned based on the second comparison.

Test Type	Vial Level	Vial Number	Results #1 Reported	#1 Z Score	Results #2 Reported	#2 Z Score
I	A	2118	0.114	-0.500	0.114	-0.500
I	B	2218	0.075	-1.000	0.076	-0.500

Proficiency Cycle Statistics

Level	Lower Limit	Upper Limit	Mean (Avg)	Std Dev	N	Number Out Of Range	
						1st Iteration	2nd Iteration
A	0.109	0.121	0.115	0.002	118	1	0
B	0.071	0.083	0.077	0.002	116	1	0
C	0.195	0.213	0.204	0.003	114	2	0
D	0.135	0.153	0.144	0.003	118	1	0
E	0.219	0.243	0.231	0.004	120	0	0

Notes: Z Score is your reported analytical result compared to the mean in terms of the standard deviation, calculated as (Result-Mean)/StddDev. The Parameter n is the number of results reported which are used to calculate the second iteration mean and standard deviation.

Florida Department of Law Enforcement Alcohol Testing Program

BLOOD ALCOHOL PROFICIENCY INITIAL TEST OUTCOME REPORT

Proficiency Cycle: 22C2

Receive Results By: 11/07/2022

Method: GC

Analyst Name: Mazek, Kathleen

Your 22C2 Proficiency test outcome is: Satisfactory

Evaluation Procedure:

First Iteration: For each level, the qualified results reported by participating analysts and reference labs are pooled, the mean, standard deviation and acceptable range are calculated using truncation, and results outside the acceptable range are excluded from the second iteration.

Second iteration: The mean, standard deviation and acceptable range are recalculated using truncation, every analyst's qualified results are compared to the recalculated acceptable range, and every analyst is assigned an outcome for the proficiency cycle. All analysts with Results Outside Acceptable Range receive retest samples. The retest results are compared to the acceptable range established by the initial test and the retested analyst's outcome for the proficiency cycle is assigned based on the second comparison.

Test Type	Vial Level	Vial Number	Results #1 Reported	#1 Z Score	Results #2 Reported	#2 Z Score
I	C	2319	0.202	-0.667	0.202	-0.667
I	D	2419	0.143	-0.333	0.144	0.000

Proficiency Cycle Statistics

Level	Lower Limit	Upper Limit	Mean (Avg)	Std Dev	N	Number Out Of Range	
						1st Iteration	2nd Iteration
A	0.109	0.121	0.115	0.002	118	1	0
B	0.071	0.083	0.077	0.002	116	1	0
C	0.195	0.213	0.204	0.003	114	2	0
D	0.135	0.153	0.144	0.003	118	1	0
E	0.219	0.243	0.231	0.004	120	0	0

Notes: Z Score is your reported analytical result compared to the mean in terms of the standard deviation, calculated as (Result-Mean)/StddDev. The Parameter n is the number of results reported which are used to calculate the second iteration mean and standard deviation.

Florida Department of Law Enforcement Alcohol Testing Program

BLOOD ALCOHOL PROFICIENCY INITIAL TEST OUTCOME REPORT

Proficiency Cycle: 22C2

Receive Results By: 11/07/2022

Method: GC

Analyst Name: Mazek, Kathleen

Your 22C2 Proficiency test outcome is: Satisfactory

Evaluation Procedure:

First Iteration: For each level, the qualified results reported by participating analysts and reference labs are pooled, the mean, standard deviation and acceptable range are calculated using truncation, and results outside the acceptable range are excluded from the second iteration.

Second iteration: The mean, standard deviation and acceptable range are recalculated using truncation, every analyst's qualified results are compared to the recalculated acceptable range, and every analyst is assigned an outcome for the proficiency cycle. All analysts with Results Outside Acceptable Range receive retest samples. The retest results are compared to the acceptable range established by the initial test and the retested analyst's outcome for the proficiency cycle is assigned based on the second comparison.

Test Type	Vial Level	Vial Number	Results #1 Reported	#1 Z Score	Results #2 Reported	#2 Z Score
I	A	2116	0.114	-0.500	0.114	-0.500
I	E	2530	0.229	-0.500	0.230	-0.250

Proficiency Cycle Statistics

Level	Lower Limit	Upper Limit	Mean (Avg)	Std Dev	N	Number Out Of Range	
						1st Iteration	2nd Iteration
A	0.109	0.121	0.115	0.002	118	1	0
B	0.071	0.083	0.077	0.002	116	1	0
C	0.195	0.213	0.204	0.003	114	2	0
D	0.135	0.153	0.144	0.003	118	1	0
E	0.219	0.243	0.231	0.004	120	0	0

Notes: Z Score is your reported analytical result compared to the mean in terms of the standard deviation, calculated as (Result-Mean)/StddDev. The Parameter n is the number of results reported which are used to calculate the second iteration mean and standard deviation.

Florida Department of Law Enforcement Alcohol Testing Program

BLOOD ALCOHOL PROFICIENCY INITIAL TEST OUTCOME REPORT

Proficiency Cycle: 22C2

Receive Results By: 10/31/2022

Method: GC

Analyst Name: McEachern, Christine

Your 22C2 Proficiency test outcome is: Satisfactory

Evaluation Procedure:

First Iteration: For each level, the qualified results reported by participating analysts and reference labs are pooled, the mean, standard deviation and acceptable range are calculated using truncation, and results outside the acceptable range are excluded from the second iteration.

Second iteration: The mean, standard deviation and acceptable range are recalculated using truncation, every analyst's qualified results are compared to the recalculated acceptable range, and every analyst is assigned an outcome for the proficiency cycle. All analysts with Results Outside Acceptable Range receive retest samples. The retest results are compared to the acceptable range established by the initial test and the retested analyst's outcome for the proficiency cycle is assigned based on the second comparison.

Test Type	Vial Level	Vial Number	Results #1 Reported	#1 Z Score	Results #2 Reported	#2 Z Score
I	A	2157	0.116	0.500	0.116	0.500
I	B	2258	0.077	0.000	0.077	0.000
I	C	2344	0.205	0.333	0.204	0.000
I	D	2459	0.146	0.667	0.146	0.667
I	E	2542	0.235	1.000	0.235	1.000

Proficiency Cycle Statistics

Level	Lower Limit	Upper Limit	Mean (Avg)	Std Dev	N	Number Out Of Range	
						1st Iteration	2nd Iteration
A	0.109	0.121	0.115	0.002	118	1	0
B	0.071	0.083	0.077	0.002	116	1	0
C	0.195	0.213	0.204	0.003	114	2	0
D	0.135	0.153	0.144	0.003	118	1	0
E	0.219	0.243	0.231	0.004	120	0	0

Notes: Z Score is your reported analytical result compared to the mean in terms of the standard deviation, calculated as (Result-Mean)/StddDev. The Parameter n is the number of results reported which are used to calculate the second iteration mean and standard deviation.

Florida Department of Law Enforcement Alcohol Testing Program

BLOOD ALCOHOL PROFICIENCY INITIAL TEST OUTCOME REPORT

Proficiency Cycle: 22C2

Receive Results By: 10/20/2022

Method: GC

Analyst Name: McKee, Stacy

Your 22C2 Proficiency test outcome is: Satisfactory

Evaluation Procedure:

First Iteration: For each level, the qualified results reported by participating analysts and reference labs are pooled, the mean, standard deviation and acceptable range are calculated using truncation, and results outside the acceptable range are excluded from the second iteration.

Second iteration: The mean, standard deviation and acceptable range are recalculated using truncation, every analyst's qualified results are compared to the recalculated acceptable range, and every analyst is assigned an outcome for the proficiency cycle. All analysts with Results Outside Acceptable Range receive retest samples. The retest results are compared to the acceptable range established by the initial test and the retested analyst's outcome for the proficiency cycle is assigned based on the second comparison.

Test Type	Vial Level	Vial Number	Results #1 Reported	#1 Z Score	Results #2 Reported	#2 Z Score
I	B	2216	0.079	1.000	0.079	1.000
I	C	2320	0.206	0.667	0.211	2.333

Proficiency Cycle Statistics

Level	Lower Limit	Upper Limit	Mean (Avg)	Std Dev	N	Number Out Of Range	
						1st Iteration	2nd Iteration
A	0.109	0.121	0.115	0.002	118	1	0
B	0.071	0.083	0.077	0.002	116	1	0
C	0.195	0.213	0.204	0.003	114	2	0
D	0.135	0.153	0.144	0.003	118	1	0
E	0.219	0.243	0.231	0.004	120	0	0

Notes: Z Score is your reported analytical result compared to the mean in terms of the standard deviation, calculated as (Result-Mean)/StddDev. The Parameter n is the number of results reported which are used to calculate the second iteration mean and standard deviation.

Florida Department of Law Enforcement Alcohol Testing Program

BLOOD ALCOHOL PROFICIENCY INITIAL TEST OUTCOME REPORT

Proficiency Cycle: 22C2

Receive Results By: 10/24/2022

Method: GC

Analyst Name: Mulder, Savanna

Your 22C2 Proficiency test outcome is: Satisfactory

Evaluation Procedure:

First Iteration: For each level, the qualified results reported by participating analysts and reference labs are pooled, the mean, standard deviation and acceptable range are calculated using truncation, and results outside the acceptable range are excluded from the second iteration.

Second iteration: The mean, standard deviation and acceptable range are recalculated using truncation, every analyst's qualified results are compared to the recalculated acceptable range, and every analyst is assigned an outcome for the proficiency cycle. All analysts with Results Outside Acceptable Range receive retest samples. The retest results are compared to the acceptable range established by the initial test and the retested analyst's outcome for the proficiency cycle is assigned based on the second comparison.

Test Type	Vial Level	Vial Number	Results #1 Reported	#1 Z Score	Results #2 Reported	#2 Z Score
I	D	2420	0.144	0.000	0.145	0.333
I	E	2519	0.234	0.750	0.234	0.750

Proficiency Cycle Statistics

Level	Lower Limit	Upper Limit	Mean (Avg)	Std Dev	N	Number Out Of Range	
						1st Iteration	2nd Iteration
A	0.109	0.121	0.115	0.002	118	1	0
B	0.071	0.083	0.077	0.002	116	1	0
C	0.195	0.213	0.204	0.003	114	2	0
D	0.135	0.153	0.144	0.003	118	1	0
E	0.219	0.243	0.231	0.004	120	0	0

Notes: Z Score is your reported analytical result compared to the mean in terms of the standard deviation, calculated as (Result-Mean)/StddDev. The Parameter n is the number of results reported which are used to calculate the second iteration mean and standard deviation.

Florida Department of Law Enforcement Alcohol Testing Program

BLOOD ALCOHOL PROFICIENCY INITIAL TEST OUTCOME REPORT

Proficiency Cycle: 22C2

Receive Results By: 10/20/2022

Method: GC

Analyst Name: Nguyen, Bryan

Your 22C2 Proficiency test outcome is: Satisfactory

Evaluation Procedure:

First Iteration: For each level, the qualified results reported by participating analysts and reference labs are pooled, the mean, standard deviation and acceptable range are calculated using truncation, and results outside the acceptable range are excluded from the second iteration.

Second iteration: The mean, standard deviation and acceptable range are recalculated using truncation, every analyst's qualified results are compared to the recalculated acceptable range, and every analyst is assigned an outcome for the proficiency cycle. All analysts with Results Outside Acceptable Range receive retest samples. The retest results are compared to the acceptable range established by the initial test and the retested analyst's outcome for the proficiency cycle is assigned based on the second comparison.

Test Type	Vial Level	Vial Number	Results #1 Reported	#1 Z Score	Results #2 Reported	#2 Z Score
I	A	2117	0.116	0.500	0.115	0.000
I	B	2217	0.077	0.000	0.077	0.000

Proficiency Cycle Statistics

Level	Lower Limit	Upper Limit	Mean (Avg)	Std Dev	N	Number Out Of Range	
						1st Iteration	2nd Iteration
A	0.109	0.121	0.115	0.002	118	1	0
B	0.071	0.083	0.077	0.002	116	1	0
C	0.195	0.213	0.204	0.003	114	2	0
D	0.135	0.153	0.144	0.003	118	1	0
E	0.219	0.243	0.231	0.004	120	0	0

Notes: Z Score is your reported analytical result compared to the mean in terms of the standard deviation, calculated as (Result-Mean)/StddDev. The Parameter n is the number of results reported which are used to calculate the second iteration mean and standard deviation.

Florida Department of Law Enforcement Alcohol Testing Program

BLOOD ALCOHOL PROFICIENCY INITIAL TEST OUTCOME REPORT

Proficiency Cycle: 22C2

Receive Results By: 10/18/2022

Method: GC

Analyst Name: Niskach, Lauren

Your 22C2 Proficiency test outcome is: Satisfactory

Evaluation Procedure:

First Iteration: For each level, the qualified results reported by participating analysts and reference labs are pooled, the mean, standard deviation and acceptable range are calculated using truncation, and results outside the acceptable range are excluded from the second iteration.

Second iteration: The mean, standard deviation and acceptable range are recalculated using truncation, every analyst's qualified results are compared to the recalculated acceptable range, and every analyst is assigned an outcome for the proficiency cycle. All analysts with Results Outside Acceptable Range receive retest samples. The retest results are compared to the acceptable range established by the initial test and the retested analyst's outcome for the proficiency cycle is assigned based on the second comparison.

Test Type	Vial Level	Vial Number	Results #1 Reported	#1 Z Score	Results #2 Reported	#2 Z Score
I	A	2156	0.113	-1.000	0.114	-0.500
I	B	2257	0.076	-0.500	0.076	-0.500
I	C	2368	0.202	-0.667	0.201	-1.000
I	D	2458	0.141	-1.000	0.143	-0.333
I	E	2541	0.226	-1.250	0.226	-1.250

Proficiency Cycle Statistics

Level	Lower Limit	Upper Limit	Mean (Avg)	Std Dev	N	Number Out Of Range	
						1st Iteration	2nd Iteration
A	0.109	0.121	0.115	0.002	118	1	0
B	0.071	0.083	0.077	0.002	116	1	0
C	0.195	0.213	0.204	0.003	114	2	0
D	0.135	0.153	0.144	0.003	118	1	0
E	0.219	0.243	0.231	0.004	120	0	0

Notes: Z Score is your reported analytical result compared to the mean in terms of the standard deviation, calculated as (Result-Mean)/StddDev. The Parameter n is the number of results reported which are used to calculate the second iteration mean and standard deviation.

Florida Department of Law Enforcement Alcohol Testing Program

BLOOD ALCOHOL PROFICIENCY INITIAL TEST OUTCOME REPORT

Proficiency Cycle: 22C2

Receive Results By: 11/04/2022

Method: GC

Analyst Name: Office of the Attorney General, North Dakota

Your 22C2 Proficiency test outcome is: Satisfactory

Evaluation Procedure:

First Iteration: For each level, the qualified results reported by participating analysts and reference labs are pooled, the mean, standard deviation and acceptable range are calculated using truncation, and results outside the acceptable range are excluded from the second iteration.

Second iteration: The mean, standard deviation and acceptable range are recalculated using truncation, every analyst's qualified results are compared to the recalculated acceptable range, and every analyst is assigned an outcome for the proficiency cycle. All analysts with Results Outside Acceptable Range receive retest samples. The retest results are compared to the acceptable range established by the initial test and the retested analyst's outcome for the proficiency cycle is assigned based on the second comparison.

Test Type	Vial Level	Vial Number	Results #1 Reported	#1 Z Score	Results #2 Reported	#2 Z Score
I	A	2155	0.117	1.000	0.116	0.500
I	B	2242	0.077	0.000	0.077	0.000
I	C	2356	0.203	-0.333	0.203	-0.333
I	D	2457	0.144	0.000	0.144	0.000
I	E	2570	0.231	0.000	0.231	0.000

Proficiency Cycle Statistics

Level	Lower Limit	Upper Limit	Mean (Avg)	Std Dev	N	Number Out Of Range	
						1st Iteration	2nd Iteration
A	0.109	0.121	0.115	0.002	118	1	0
B	0.071	0.083	0.077	0.002	116	1	0
C	0.195	0.213	0.204	0.003	114	2	0
D	0.135	0.153	0.144	0.003	118	1	0
E	0.219	0.243	0.231	0.004	120	0	0

Notes: Z Score is your reported analytical result compared to the mean in terms of the standard deviation, calculated as (Result-Mean)/StddDev. The Parameter n is the number of results reported which are used to calculate the second iteration mean and standard deviation.

Florida Department of Law Enforcement Alcohol Testing Program

BLOOD ALCOHOL PROFICIENCY INITIAL TEST OUTCOME REPORT

Proficiency Cycle: 22C2

Receive Results By: 11/02/2022

Method: GC

Analyst Name: Okraska, Jennifer

Your 22C2 Proficiency test outcome is: Satisfactory

Evaluation Procedure:

First Iteration: For each level, the qualified results reported by participating analysts and reference labs are pooled, the mean, standard deviation and acceptable range are calculated using truncation, and results outside the acceptable range are excluded from the second iteration.

Second iteration: The mean, standard deviation and acceptable range are recalculated using truncation, every analyst's qualified results are compared to the recalculated acceptable range, and every analyst is assigned an outcome for the proficiency cycle. All analysts with Results Outside Acceptable Range receive retest samples. The retest results are compared to the acceptable range established by the initial test and the retested analyst's outcome for the proficiency cycle is assigned based on the second comparison.

Test Type	Vial Level	Vial Number	Results #1 Reported	#1 Z Score	Results #2 Reported	#2 Z Score
I	A	2170	0.116	0.500	0.117	1.000
I	B	2270	0.075	-1.000	0.074	-1.500
I	C	2369	0.199	-1.667	0.200	-1.333
I	D	2470	0.142	-0.667	0.143	-0.333
I	E	2569	0.233	0.500	0.234	0.750

Proficiency Cycle Statistics

Level	Lower Limit	Upper Limit	Mean (Avg)	Std Dev	N	Number Out Of Range	
						1st Iteration	2nd Iteration
A	0.109	0.121	0.115	0.002	118	1	0
B	0.071	0.083	0.077	0.002	116	1	0
C	0.195	0.213	0.204	0.003	114	2	0
D	0.135	0.153	0.144	0.003	118	1	0
E	0.219	0.243	0.231	0.004	120	0	0

Notes: Z Score is your reported analytical result compared to the mean in terms of the standard deviation, calculated as (Result-Mean)/StddDev. The Parameter n is the number of results reported which are used to calculate the second iteration mean and standard deviation.

Florida Department of Law Enforcement Alcohol Testing Program

BLOOD ALCOHOL PROFICIENCY INITIAL TEST OUTCOME REPORT

Proficiency Cycle: 22C2

Receive Results By: 10/21/2022

Method: GC

Analyst Name: Ouellette, Nancy

Your 22C2 Proficiency test outcome is: Satisfactory

Evaluation Procedure:

First Iteration: For each level, the qualified results reported by participating analysts and reference labs are pooled, the mean, standard deviation and acceptable range are calculated using truncation, and results outside the acceptable range are excluded from the second iteration.

Second iteration: The mean, standard deviation and acceptable range are recalculated using truncation, every analyst's qualified results are compared to the recalculated acceptable range, and every analyst is assigned an outcome for the proficiency cycle. All analysts with Results Outside Acceptable Range receive retest samples. The retest results are compared to the acceptable range established by the initial test and the retested analyst's outcome for the proficiency cycle is assigned based on the second comparison.

Test Type	Vial Level	Vial Number	Results #1 Reported	#1 Z Score	Results #2 Reported	#2 Z Score
I	A	2165	0.116	0.500	0.116	0.500
I	B	2256	0.078	0.500	0.078	0.500
I	C	2355	0.207	1.000	0.208	1.333
I	D	2456	0.147	1.000	0.147	1.000
I	E	2555	0.235	1.000	0.234	0.750

Proficiency Cycle Statistics

Level	Lower Limit	Upper Limit	Mean (Avg)	Std Dev	N	Number Out Of Range	
						1st Iteration	2nd Iteration
A	0.109	0.121	0.115	0.002	118	1	0
B	0.071	0.083	0.077	0.002	116	1	0
C	0.195	0.213	0.204	0.003	114	2	0
D	0.135	0.153	0.144	0.003	118	1	0
E	0.219	0.243	0.231	0.004	120	0	0

Notes: Z Score is your reported analytical result compared to the mean in terms of the standard deviation, calculated as (Result-Mean)/StddDev. The Parameter n is the number of results reported which are used to calculate the second iteration mean and standard deviation.

Florida Department of Law Enforcement Alcohol Testing Program

BLOOD ALCOHOL PROFICIENCY INITIAL TEST OUTCOME REPORT

Proficiency Cycle: 22C2

Receive Results By: 10/25/2022

Method: GC

Analyst Name: Ouellette, Nancy

Your 22C2 Proficiency test outcome is: Satisfactory

Evaluation Procedure:

First Iteration: For each level, the qualified results reported by participating analysts and reference labs are pooled, the mean, standard deviation and acceptable range are calculated using truncation, and results outside the acceptable range are excluded from the second iteration.

Second iteration: The mean, standard deviation and acceptable range are recalculated using truncation, every analyst's qualified results are compared to the recalculated acceptable range, and every analyst is assigned an outcome for the proficiency cycle. All analysts with Results Outside Acceptable Range receive retest samples. The retest results are compared to the acceptable range established by the initial test and the retested analyst's outcome for the proficiency cycle is assigned based on the second comparison.

Test Type	Vial Level	Vial Number	Results #1 Reported	#1 Z Score	Results #2 Reported	#2 Z Score
I	A	2166	0.117	1.000	0.115	0.000
I	B	2266	0.078	0.500	0.077	0.000
I	C	2365	0.205	0.333	0.207	1.000
I	D	2466	0.145	0.333	0.145	0.333
I	E	2568	0.235	1.000	0.233	0.500

Proficiency Cycle Statistics

Level	Lower Limit	Upper Limit	Mean (Avg)	Std Dev	N	Number Out Of Range	
						1st Iteration	2nd Iteration
A	0.109	0.121	0.115	0.002	118	1	0
B	0.071	0.083	0.077	0.002	116	1	0
C	0.195	0.213	0.204	0.003	114	2	0
D	0.135	0.153	0.144	0.003	118	1	0
E	0.219	0.243	0.231	0.004	120	0	0

Notes: Z Score is your reported analytical result compared to the mean in terms of the standard deviation, calculated as (Result-Mean)/StddDev. The Parameter n is the number of results reported which are used to calculate the second iteration mean and standard deviation.

Florida Department of Law Enforcement Alcohol Testing Program

BLOOD ALCOHOL PROFICIENCY INITIAL TEST OUTCOME REPORT

Proficiency Cycle: 22C2

Receive Results By: 10/25/2022

Method: GC

Analyst Name: Ovalle, Ana

Your 22C2 Proficiency test outcome is: Satisfactory

Evaluation Procedure:

First Iteration: For each level, the qualified results reported by participating analysts and reference labs are pooled, the mean, standard deviation and acceptable range are calculated using truncation, and results outside the acceptable range are excluded from the second iteration.

Second iteration: The mean, standard deviation and acceptable range are recalculated using truncation, every analyst's qualified results are compared to the recalculated acceptable range, and every analyst is assigned an outcome for the proficiency cycle. All analysts with Results Outside Acceptable Range receive retest samples. The retest results are compared to the acceptable range established by the initial test and the retested analyst's outcome for the proficiency cycle is assigned based on the second comparison.

Test Type	Vial Level	Vial Number	Results #1 Reported	#1 Z Score	Results #2 Reported	#2 Z Score
I	A	2132	0.119	2.000	0.119	2.000
I	B	2241	0.080	1.500	0.078	0.500
I	C	2341	0.205	0.333	0.207	1.000
I	D	2441	0.137	-2.333	0.138	-2.000
I	E	2531	0.235	1.000	0.235	1.000

Proficiency Cycle Statistics

Level	Lower Limit	Upper Limit	Mean (Avg)	Std Dev	N	Number Out Of Range	
						1st Iteration	2nd Iteration
A	0.109	0.121	0.115	0.002	118	1	0
B	0.071	0.083	0.077	0.002	116	1	0
C	0.195	0.213	0.204	0.003	114	2	0
D	0.135	0.153	0.144	0.003	118	1	0
E	0.219	0.243	0.231	0.004	120	0	0

Notes: Z Score is your reported analytical result compared to the mean in terms of the standard deviation, calculated as (Result-Mean)/StddDev. The Parameter n is the number of results reported which are used to calculate the second iteration mean and standard deviation.

Florida Department of Law Enforcement Alcohol Testing Program

BLOOD ALCOHOL PROFICIENCY INITIAL TEST OUTCOME REPORT

Proficiency Cycle: 22C2

Receive Results By: 10/21/2022

Method: GC

Analyst Name: Pacheco, Jamie

Your 22C2 Proficiency test outcome is: Satisfactory

Evaluation Procedure:

First Iteration: For each level, the qualified results reported by participating analysts and reference labs are pooled, the mean, standard deviation and acceptable range are calculated using truncation, and results outside the acceptable range are excluded from the second iteration.

Second iteration: The mean, standard deviation and acceptable range are recalculated using truncation, every analyst's qualified results are compared to the recalculated acceptable range, and every analyst is assigned an outcome for the proficiency cycle. All analysts with Results Outside Acceptable Range receive retest samples. The retest results are compared to the acceptable range established by the initial test and the retested analyst's outcome for the proficiency cycle is assigned based on the second comparison.

Test Type	Vial Level	Vial Number	Results #1 Reported	#1 Z Score	Results #2 Reported	#2 Z Score
I	C	2321	0.204	0.000	0.204	0.000
I	D	2430	0.145	0.333	0.144	0.000

Proficiency Cycle Statistics

Level	Lower Limit	Upper Limit	Mean (Avg)	Std Dev	N	Number Out Of Range	
						1st Iteration	2nd Iteration
A	0.109	0.121	0.115	0.002	118	1	0
B	0.071	0.083	0.077	0.002	116	1	0
C	0.195	0.213	0.204	0.003	114	2	0
D	0.135	0.153	0.144	0.003	118	1	0
E	0.219	0.243	0.231	0.004	120	0	0

Notes: Z Score is your reported analytical result compared to the mean in terms of the standard deviation, calculated as (Result-Mean)/StddDev. The Parameter n is the number of results reported which are used to calculate the second iteration mean and standard deviation.

Florida Department of Law Enforcement Alcohol Testing Program

BLOOD ALCOHOL PROFICIENCY INITIAL TEST OUTCOME REPORT

Proficiency Cycle: 22C2

Receive Results By: 10/21/2022

Method: GC

Analyst Name: Pacheco, Jamie

Your 22C2 Proficiency test outcome is: Satisfactory

Evaluation Procedure:

First Iteration: For each level, the qualified results reported by participating analysts and reference labs are pooled, the mean, standard deviation and acceptable range are calculated using truncation, and results outside the acceptable range are excluded from the second iteration.

Second iteration: The mean, standard deviation and acceptable range are recalculated using truncation, every analyst's qualified results are compared to the recalculated acceptable range, and every analyst is assigned an outcome for the proficiency cycle. All analysts with Results Outside Acceptable Range receive retest samples. The retest results are compared to the acceptable range established by the initial test and the retested analyst's outcome for the proficiency cycle is assigned based on the second comparison.

Test Type	Vial Level	Vial Number	Results #1 Reported	#1 Z Score	Results #2 Reported	#2 Z Score
I	A	2121	0.116	0.500	0.117	1.000
I	E	2518	0.232	0.250	0.232	0.250

Proficiency Cycle Statistics

Level	Lower Limit	Upper Limit	Mean (Avg)	Std Dev	N	Number Out Of Range	
						1st Iteration	2nd Iteration
A	0.109	0.121	0.115	0.002	118	1	0
B	0.071	0.083	0.077	0.002	116	1	0
C	0.195	0.213	0.204	0.003	114	2	0
D	0.135	0.153	0.144	0.003	118	1	0
E	0.219	0.243	0.231	0.004	120	0	0

Notes: Z Score is your reported analytical result compared to the mean in terms of the standard deviation, calculated as (Result-Mean)/Stdev. The Parameter n is the number of results reported which are used to calculate the second iteration mean and standard deviation.

Florida Department of Law Enforcement Alcohol Testing Program

BLOOD ALCOHOL PROFICIENCY INITIAL TEST OUTCOME REPORT

Proficiency Cycle: 22C2

Receive Results By: 10/24/2022

Method: GC

Analyst Name: Patel, Minakshi

Your 22C2 Proficiency test outcome is: Satisfactory

Evaluation Procedure:

First Iteration: For each level, the qualified results reported by participating analysts and reference labs are pooled, the mean, standard deviation and acceptable range are calculated using truncation, and results outside the acceptable range are excluded from the second iteration.

Second iteration: The mean, standard deviation and acceptable range are recalculated using truncation, every analyst's qualified results are compared to the recalculated acceptable range, and every analyst is assigned an outcome for the proficiency cycle. All analysts with Results Outside Acceptable Range receive retest samples. The retest results are compared to the acceptable range established by the initial test and the retested analyst's outcome for the proficiency cycle is assigned based on the second comparison.

Test Type	Vial Level	Vial Number	Results #1 Reported	#1 Z Score	Results #2 Reported	#2 Z Score
I	B	2226	0.078	0.500	0.076	-0.500
I	C	2330	0.204	0.000	0.205	0.333

Proficiency Cycle Statistics

Level	Lower Limit	Upper Limit	Mean (Avg)	Std Dev	N	Number Out Of Range	
						1st Iteration	2nd Iteration
A	0.109	0.121	0.115	0.002	118	1	0
B	0.071	0.083	0.077	0.002	116	1	0
C	0.195	0.213	0.204	0.003	114	2	0
D	0.135	0.153	0.144	0.003	118	1	0
E	0.219	0.243	0.231	0.004	120	0	0

Notes: Z Score is your reported analytical result compared to the mean in terms of the standard deviation, calculated as (Result-Mean)/StddDev. The Parameter n is the number of results reported which are used to calculate the second iteration mean and standard deviation.

Florida Department of Law Enforcement Alcohol Testing Program

BLOOD ALCOHOL PROFICIENCY INITIAL TEST OUTCOME REPORT

Proficiency Cycle: 22C2

Receive Results By: 10/20/2022

Method: GC

Analyst Name: Phosouvank-Chamroeunphorn, Davy-Anna

Your 22C2 Proficiency test outcome is: Unsatisfactory

Evaluation Procedure:

First Iteration: For each level, the qualified results reported by participating analysts and reference labs are pooled, the mean, standard deviation and acceptable range are calculated using truncation, and results outside the acceptable range are excluded from the second iteration.

Second iteration: The mean, standard deviation and acceptable range are recalculated using truncation, every analyst's qualified results are compared to the recalculated acceptable range, and every analyst is assigned an outcome for the proficiency cycle. All analysts with Results Outside Acceptable Range receive retest samples. The retest results are compared to the acceptable range established by the initial test and the retested analyst's outcome for the proficiency cycle is assigned based on the second comparison.

Test Type	Vial Level	Vial Number	Results #1 Reported	#1 Z Score	Results #2 Reported	#2 Z Score
I	A	2147	0.113	-1.000	0.114	-0.500
I	B	2249	0.068	-4.500	0.068	-4.500
I	C	2347	0.199	-1.000	0.199	-1.000
I	D	2447	0.141	-1.000	0.141	-1.000
I	E	2532	0.226	-1.250	0.228	-0.750

Proficiency Cycle Statistics

Level	Lower Limit	Upper Limit	Mean (Avg)	Std Dev	N	Number Out Of Range	
						1st Iteration	2nd Iteration
A	0.109	0.121	0.115	0.002	118	1	0
B	0.071	0.083	0.077	0.002	116	1	0
C	0.195	0.213	0.204	0.003	114	2	0
D	0.135	0.153	0.144	0.003	118	1	0
E	0.219	0.243	0.231	0.004	120	0	0

Notes: Z Score is your reported analytical result compared to the mean in terms of the standard deviation, calculated as (Result-Mean)/StddDev. The Parameter n is the number of results reported which are used to calculate the second iteration mean and standard deviation.

Florida Department of Law Enforcement Alcohol Testing Program

BLOOD ALCOHOL PROFICIENCY INITIAL TEST OUTCOME REPORT

Proficiency Cycle: 22C2

Receive Results By: 10/26/2022

Method: GC

Analyst Name: Plier, Ashley

Your 22C2 Proficiency test outcome is: Satisfactory

Evaluation Procedure:

First Iteration: For each level, the qualified results reported by participating analysts and reference labs are pooled, the mean, standard deviation and acceptable range are calculated using truncation, and results outside the acceptable range are excluded from the second iteration.

Second iteration: The mean, standard deviation and acceptable range are recalculated using truncation, every analyst's qualified results are compared to the recalculated acceptable range, and every analyst is assigned an outcome for the proficiency cycle. All analysts with Results Outside Acceptable Range receive retest samples. The retest results are compared to the acceptable range established by the initial test and the retested analyst's outcome for the proficiency cycle is assigned based on the second comparison.

Test Type	Vial Level	Vial Number	Results #1 Reported	#1 Z Score	Results #2 Reported	#2 Z Score
I	D	2429	0.148	1.333	0.148	1.333
I	E	2529	0.234	0.750	0.235	1.000

Proficiency Cycle Statistics

Level	Lower Limit	Upper Limit	Mean (Avg)	Std Dev	N	Number Out Of Range	
						1st Iteration	2nd Iteration
A	0.109	0.121	0.115	0.002	118	1	0
B	0.071	0.083	0.077	0.002	116	1	0
C	0.195	0.213	0.204	0.003	114	2	0
D	0.135	0.153	0.144	0.003	118	1	0
E	0.219	0.243	0.231	0.004	120	0	0

Notes: Z Score is your reported analytical result compared to the mean in terms of the standard deviation, calculated as (Result-Mean)/StddDev. The Parameter n is the number of results reported which are used to calculate the second iteration mean and standard deviation.

Florida Department of Law Enforcement Alcohol Testing Program

BLOOD ALCOHOL PROFICIENCY INITIAL TEST OUTCOME REPORT

Proficiency Cycle: 22C2

Receive Results By: 10/27/2022

Method: GC

Analyst Name: Puer, Ashley

Your 22C2 Proficiency test outcome is: Satisfactory

Evaluation Procedure:

First Iteration: For each level, the qualified results reported by participating analysts and reference labs are pooled, the mean, standard deviation and acceptable range are calculated using truncation, and results outside the acceptable range are excluded from the second iteration.

Second iteration: The mean, standard deviation and acceptable range are recalculated using truncation, every analyst's qualified results are compared to the recalculated acceptable range, and every analyst is assigned an outcome for the proficiency cycle. All analysts with Results Outside Acceptable Range receive retest samples. The retest results are compared to the acceptable range established by the initial test and the retested analyst's outcome for the proficiency cycle is assigned based on the second comparison.

Test Type	Vial Level	Vial Number	Results #1 Reported	#1 Z Score	Results #2 Reported	#2 Z Score
I	A	2122	0.114	-0.500	0.114	-0.500
I	B	2230	0.077	0.000	0.077	0.000

Proficiency Cycle Statistics

Level	Lower Limit	Upper Limit	Mean (Avg)	Std Dev	N	Number Out Of Range	
						1st Iteration	2nd Iteration
A	0.109	0.121	0.115	0.002	118	1	0
B	0.071	0.083	0.077	0.002	116	1	0
C	0.195	0.213	0.204	0.003	114	2	0
D	0.135	0.153	0.144	0.003	118	1	0
E	0.219	0.243	0.231	0.004	120	0	0

Notes: Z Score is your reported analytical result compared to the mean in terms of the standard deviation, calculated as (Result-Mean)/StddDev. The Parameter n is the number of results reported which are used to calculate the second iteration mean and standard deviation.

Florida Department of Law Enforcement Alcohol Testing Program

BLOOD ALCOHOL PROFICIENCY INITIAL TEST OUTCOME REPORT

Proficiency Cycle: 22C2

Receive Results By: 10/26/2022

Method: GC

Analyst Name: Plier, Ashley

Your 22C2 Proficiency test outcome is: Satisfactory

Evaluation Procedure:

First Iteration: For each level, the qualified results reported by participating analysts and reference labs are pooled, the mean, standard deviation and acceptable range are calculated using truncation, and results outside the acceptable range are excluded from the second iteration.

Second iteration: The mean, standard deviation and acceptable range are recalculated using truncation, every analyst's qualified results are compared to the recalculated acceptable range, and every analyst is assigned an outcome for the proficiency cycle. All analysts with Results Outside Acceptable Range receive retest samples. The retest results are compared to the acceptable range established by the initial test and the retested analyst's outcome for the proficiency cycle is assigned based on the second comparison.

Test Type	Vial Level	Vial Number	Results #1 Reported	#1 Z Score	Results #2 Reported	#2 Z Score
I	C	2329	0.208	1.333	0.207	1.000
I	D	2428	0.147	1.000	0.146	0.667

Proficiency Cycle Statistics

Level	Lower Limit	Upper Limit	Mean (Avg)	Std Dev	N	Number Out Of Range	
						1st Iteration	2nd Iteration
A	0.109	0.121	0.115	0.002	118	1	0
B	0.071	0.083	0.077	0.002	116	1	0
C	0.195	0.213	0.204	0.003	114	2	0
D	0.135	0.153	0.144	0.003	118	1	0
E	0.219	0.243	0.231	0.004	120	0	0

Notes: Z Score is your reported analytical result compared to the mean in terms of the standard deviation, calculated as (Result-Mean)/StddDev. The Parameter n is the number of results reported which are used to calculate the second iteration mean and standard deviation.

Florida Department of Law Enforcement Alcohol Testing Program

BLOOD ALCOHOL PROFICIENCY INITIAL TEST OUTCOME REPORT

Proficiency Cycle: 22C2

Receive Results By: 10/17/2022

Method: GC

Analyst Name: Potoukian, Rocio

Your 22C2 Proficiency test outcome is: Satisfactory

Evaluation Procedure:

First Iteration: For each level, the qualified results reported by participating analysts and reference labs are pooled, the mean, standard deviation and acceptable range are calculated using truncation, and results outside the acceptable range are excluded from the second iteration.

Second iteration: The mean, standard deviation and acceptable range are recalculated using truncation, every analyst's qualified results are compared to the recalculated acceptable range, and every analyst is assigned an outcome for the proficiency cycle. All analysts with Results Outside Acceptable Range receive retest samples. The retest results are compared to the acceptable range established by the initial test and the retested analyst's outcome for the proficiency cycle is assigned based on the second comparison.

Test Type	Vial Level	Vial Number	Results #1 Reported	#1 Z Score	Results #2 Reported	#2 Z Score
I	A	2154	0.114	-0.500	0.115	0.000
I	B	2265	0.078	0.500	0.078	0.500
I	C	2364	0.203	-0.333	0.201	-1.000
I	D	2465	0.143	-0.333	0.139	-1.667
I	E	2564	0.231	0.000	0.228	-0.750

Proficiency Cycle Statistics

Level	Lower Limit	Upper Limit	Mean (Avg)	Std Dev	N	Number Out Of Range	
						1st Iteration	2nd Iteration
A	0.109	0.121	0.115	0.002	118	1	0
B	0.071	0.083	0.077	0.002	116	1	0
C	0.195	0.213	0.204	0.003	114	2	0
D	0.135	0.153	0.144	0.003	118	1	0
E	0.219	0.243	0.231	0.004	120	0	0

Notes: Z Score is your reported analytical result compared to the mean in terms of the standard deviation, calculated as (Result-Mean)/StdDev. The Parameter n is the number of results reported which are used to calculate the second iteration mean and standard deviation.

Florida Department of Law Enforcement Alcohol Testing Program

BLOOD ALCOHOL PROFICIENCY INITIAL TEST OUTCOME REPORT

Proficiency Cycle: 22C2

Receive Results By: 10/31/2022

Method: GC

Analyst Name: Quinney, Elden

Your 22C2 Proficiency test outcome is: Satisfactory

Evaluation Procedure:

First Iteration: For each level, the qualified results reported by participating analysts and reference labs are pooled, the mean, standard deviation and acceptable range are calculated using truncation, and results outside the acceptable range are excluded from the second iteration.

Second iteration: The mean, standard deviation and acceptable range are recalculated using truncation, every analyst's qualified results are compared to the recalculated acceptable range, and every analyst is assigned an outcome for the proficiency cycle. All analysts with Results Outside Acceptable Range receive retest samples. The retest results are compared to the acceptable range established by the initial test and the retested analyst's outcome for the proficiency cycle is assigned based on the second comparison.

Test Type	Vial Level	Vial Number	Results #1 Reported	#1 Z Score	Results #2 Reported	#2 Z Score
I	A	2141	0.118	1.500	0.115	0.000
I	B	2252	0.079	1.000	0.079	1.000
I	C	2351	0.205	0.333	0.207	1.000
I	D	2451	0.146	0.667	0.146	0.667
I	E	2567	0.236	1.250	0.233	0.500

Proficiency Cycle Statistics

Level	Lower Limit	Upper Limit	Mean (Avg)	Std Dev	N	Number Out Of Range	
						1st Iteration	2nd Iteration
A	0.109	0.121	0.115	0.002	118	1	0
B	0.071	0.083	0.077	0.002	116	1	0
C	0.195	0.213	0.204	0.003	114	2	0
D	0.135	0.153	0.144	0.003	118	1	0
E	0.219	0.243	0.231	0.004	120	0	0

Notes: Z Score is your reported analytical result compared to the mean in terms of the standard deviation, calculated as (Result-Mean)/StddDev. The Parameter n is the number of results reported which are used to calculate the second iteration mean and standard deviation.

Florida Department of Law Enforcement Alcohol Testing Program

BLOOD ALCOHOL PROFICIENCY INITIAL TEST OUTCOME REPORT

Proficiency Cycle: 22C2

Receive Results By: 10/18/2022

Method: GC

Analyst Name: Rato, Francesca

Your 22C2 Proficiency test outcome is: Satisfactory

Evaluation Procedure:

First Iteration: For each level, the qualified results reported by participating analysts and reference labs are pooled, the mean, standard deviation and acceptable range are calculated using truncation, and results outside the acceptable range are excluded from the second iteration.

Second iteration: The mean, standard deviation and acceptable range are recalculated using truncation, every analyst's qualified results are compared to the recalculated acceptable range, and every analyst is assigned an outcome for the proficiency cycle. All analysts with Results Outside Acceptable Range receive retest samples. The retest results are compared to the acceptable range established by the initial test and the retested analyst's outcome for the proficiency cycle is assigned based on the second comparison.

Test Type	Vial Level	Vial Number	Results #1 Reported	#1 Z Score	Results #2 Reported	#2 Z Score
I	A	2130	0.113	-1.000	0.112	-1.500
I	E	2550	0.228	-0.750	0.227	-1.000

Proficiency Cycle Statistics

Level	Lower Limit	Upper Limit	Mean (Avg)	Std Dev	N	Number Out Of Range	
						1st Iteration	2nd Iteration
A	0.109	0.121	0.115	0.002	118	1	0
B	0.071	0.083	0.077	0.002	116	1	0
C	0.195	0.213	0.204	0.003	114	2	0
D	0.135	0.153	0.144	0.003	118	1	0
E	0.219	0.243	0.231	0.004	120	0	0

Notes: Z Score is your reported analytical result compared to the mean in terms of the standard deviation, calculated as (Result-Mean)/StddDev. The Parameter n is the number of results reported which are used to calculate the second iteration mean and standard deviation.

Florida Department of Law Enforcement Alcohol Testing Program

BLOOD ALCOHOL PROFICIENCY INITIAL TEST OUTCOME REPORT

Proficiency Cycle: 22C2

Receive Results By: 10/18/2022

Method: GC

Analyst Name: Rawski, Kathryn

Your 22C2 Proficiency test outcome is: Satisfactory

Evaluation Procedure:

First Iteration: For each level, the qualified results reported by participating analysts and reference labs are pooled, the mean, standard deviation and acceptable range are calculated using truncation, and results outside the acceptable range are excluded from the second iteration.

Second iteration: The mean, standard deviation and acceptable range are recalculated using truncation, every analyst's qualified results are compared to the recalculated acceptable range, and every analyst is assigned an outcome for the proficiency cycle. All analysts with Results Outside Acceptable Range receive retest samples. The retest results are compared to the acceptable range established by the initial test and the retested analyst's outcome for the proficiency cycle is assigned based on the second comparison.

Test Type	Vial Level	Vial Number	Results #1 Reported	#1 Z Score	Results #2 Reported	#2 Z Score
I	A	2146	0.112	-1.500	0.113	-1.000
I	B	2246	0.075	-1.000	0.076	-0.500
I	C	2360	0.199	-1.667	0.198	-2.000
I	D	2446	0.142	-0.667	0.143	-0.333
I	E	2547	0.227	-1.000	0.226	-1.250

Proficiency Cycle Statistics

Level	Lower Limit	Upper Limit	Mean (Avg)	Std Dev	N	Number Out Of Range	
						1st Iteration	2nd Iteration
A	0.109	0.121	0.115	0.002	118	1	0
B	0.071	0.083	0.077	0.002	116	1	0
C	0.195	0.213	0.204	0.003	114	2	0
D	0.135	0.153	0.144	0.003	118	1	0
E	0.219	0.243	0.231	0.004	120	0	0

Notes: Z Score is your reported analytical result compared to the mean in terms of the standard deviation, calculated as (Result-Mean)/StddDev. The Parameter n is the number of results reported which are used to calculate the second iteration mean and standard deviation.

Florida Department of Law Enforcement Alcohol Testing Program

BLOOD ALCOHOL PROFICIENCY INITIAL TEST OUTCOME REPORT

Proficiency Cycle: 22C2

Receive Results By: 10/17/2022

Method: GC

Analyst Name: Raymonvil, Wilsa

Your 22C2 Proficiency test outcome is: Satisfactory

Evaluation Procedure:

First Iteration: For each level, the qualified results reported by participating analysts and reference labs are pooled, the mean, standard deviation and acceptable range are calculated using truncation, and results outside the acceptable range are excluded from the second iteration.

Second iteration: The mean, standard deviation and acceptable range are recalculated using truncation, every analyst's qualified results are compared to the recalculated acceptable range, and every analyst is assigned an outcome for the proficiency cycle. All analysts with Results Outside Acceptable Range receive retest samples. The retest results are compared to the acceptable range established by the initial test and the retested analyst's outcome for the proficiency cycle is assigned based on the second comparison.

Test Type	Vial Level	Vial Number	Results #1 Reported	#1 Z Score	Results #2 Reported	#2 Z Score
I	B	2229	0.078	0.500	0.079	1.000
I	C	2328	0.202	-0.667	0.202	-0.667

Proficiency Cycle Statistics

Level	Lower Limit	Upper Limit	Mean (Avg)	Std Dev	N	Number Out Of Range	
						1st Iteration	2nd Iteration
A	0.109	0.121	0.115	0.002	118	1	0
B	0.071	0.083	0.077	0.002	116	1	0
C	0.195	0.213	0.204	0.003	114	2	0
D	0.135	0.153	0.144	0.003	118	1	0
E	0.219	0.243	0.231	0.004	120	0	0

Notes: Z Score is your reported analytical result compared to the mean in terms of the standard deviation, calculated as (Result-Mean)/StddDev. The Parameter n is the number of results reported which are used to calculate the second iteration mean and standard deviation.

Florida Department of Law Enforcement Alcohol Testing Program

BLOOD ALCOHOL PROFICIENCY INITIAL TEST OUTCOME REPORT

Proficiency Cycle: 22C2

Receive Results By: 10/27/2022

Method: GC

Analyst Name: Reidy, Lisa

Your 22C2 Proficiency test outcome is: Satisfactory

Evaluation Procedure:

First Iteration: For each level, the qualified results reported by participating analysts and reference labs are pooled, the mean, standard deviation and acceptable range are calculated using truncation, and results outside the acceptable range are excluded from the second iteration.

Second iteration: The mean, standard deviation and acceptable range are recalculated using truncation, every analyst's qualified results are compared to the recalculated acceptable range, and every analyst is assigned an outcome for the proficiency cycle. All analysts with Results Outside Acceptable Range receive retest samples. The retest results are compared to the acceptable range established by the initial test and the retested analyst's outcome for the proficiency cycle is assigned based on the second comparison.

Test Type	Vial Level	Vial Number	Results #1 Reported	#1 Z Score	Results #2 Reported	#2 Z Score
I	D	2427	0.145	0.333	0.143	-0.333
I	E	2528	0.236	1.250	0.236	1.250

Proficiency Cycle Statistics

Level	Lower Limit	Upper Limit	Mean (Avg)	Std Dev	N	Number Out Of Range	
						1st Iteration	2nd Iteration
A	0.109	0.121	0.115	0.002	118	1	0
B	0.071	0.083	0.077	0.002	116	1	0
C	0.195	0.213	0.204	0.003	114	2	0
D	0.135	0.153	0.144	0.003	118	1	0
E	0.219	0.243	0.231	0.004	120	0	0

Notes: Z Score is your reported analytical result compared to the mean in terms of the standard deviation, calculated as (Result-Mean)/StddDev. The Parameter n is the number of results reported which are used to calculate the second iteration mean and standard deviation.

Florida Department of Law Enforcement Alcohol Testing Program

BLOOD ALCOHOL PROFICIENCY INITIAL TEST OUTCOME REPORT

Proficiency Cycle: 22C2

Receive Results By: 10/27/2022

Method: GC

Analyst Name: Reidy, Lisa

Your 22C2 Proficiency test outcome is: Satisfactory

Evaluation Procedure:

First Iteration: For each level, the qualified results reported by participating analysts and reference labs are pooled, the mean, standard deviation and acceptable range are calculated using truncation, and results outside the acceptable range are excluded from the second iteration.

Second iteration: The mean, standard deviation and acceptable range are recalculated using truncation, every analyst's qualified results are compared to the recalculated acceptable range, and every analyst is assigned an outcome for the proficiency cycle. All analysts with Results Outside Acceptable Range receive retest samples. The retest results are compared to the acceptable range established by the initial test and the retested analyst's outcome for the proficiency cycle is assigned based on the second comparison.

Test Type	Vial Level	Vial Number	Results #1 Reported	#1 Z Score	Results #2 Reported	#2 Z Score
I	A	2129	0.114	-0.500	0.114	-0.500
I	B	2228	0.076	-0.500	0.076	-0.500

Proficiency Cycle Statistics

Level	Lower Limit	Upper Limit	Mean (Avg)	Std Dev	N	Number Out Of Range	
						1st Iteration	2nd Iteration
A	0.109	0.121	0.115	0.002	118	1	0
B	0.071	0.083	0.077	0.002	116	1	0
C	0.195	0.213	0.204	0.003	114	2	0
D	0.135	0.153	0.144	0.003	118	1	0
E	0.219	0.243	0.231	0.004	120	0	0

Notes: Z Score is your reported analytical result compared to the mean in terms of the standard deviation, calculated as (Result-Mean)/Stdev. The Parameter n is the number of results reported which are used to calculate the second iteration mean and standard deviation.

Florida Department of Law Enforcement Alcohol Testing Program

BLOOD ALCOHOL PROFICIENCY INITIAL TEST OUTCOME REPORT

Proficiency Cycle: 22C2

Receive Results By: 11/02/2022

Method: GC

Analyst Name: Rohe, Lisa

Your 22C2 Proficiency test outcome is: Satisfactory

Evaluation Procedure:

First Iteration: For each level, the qualified results reported by participating analysts and reference labs are pooled, the mean, standard deviation and acceptable range are calculated using truncation, and results outside the acceptable range are excluded from the second iteration.

Second iteration: The mean, standard deviation and acceptable range are recalculated using truncation, every analyst's qualified results are compared to the recalculated acceptable range, and every analyst is assigned an outcome for the proficiency cycle. All analysts with Results Outside Acceptable Range receive retest samples. The retest results are compared to the acceptable range established by the initial test and the retested analyst's outcome for the proficiency cycle is assigned based on the second comparison.

Test Type	Vial Level	Vial Number	Results #1 Reported	#1 Z Score	Results #2 Reported	#2 Z Score
I	C	2327	0.204	0.000	0.207	1.000
I	D	2426	0.146	0.667	0.145	0.333

Proficiency Cycle Statistics

Level	Lower Limit	Upper Limit	Mean (Avg)	Std Dev	N	Number Out Of Range	
						1st Iteration	2nd Iteration
A	0.109	0.121	0.115	0.002	118	1	0
B	0.071	0.083	0.077	0.002	116	1	0
C	0.195	0.213	0.204	0.003	114	2	0
D	0.135	0.153	0.144	0.003	118	1	0
E	0.219	0.243	0.231	0.004	120	0	0

Notes: Z Score is your reported analytical result compared to the mean in terms of the standard deviation, calculated as (Result-Mean)/Stdev. The Parameter n is the number of results reported which are used to calculate the second iteration mean and standard deviation.

Florida Department of Law Enforcement Alcohol Testing Program

BLOOD ALCOHOL PROFICIENCY INITIAL TEST OUTCOME REPORT

Proficiency Cycle: 22C2

Receive Results By: 11/07/2022

Method: GC

Analyst Name: Rohe, Lisa

Your 22C2 Proficiency test outcome is: Satisfactory

Evaluation Procedure:

First Iteration: For each level, the qualified results reported by participating analysts and reference labs are pooled, the mean, standard deviation and acceptable range are calculated using truncation, and results outside the acceptable range are excluded from the second iteration.

Second iteration: The mean, standard deviation and acceptable range are recalculated using truncation, every analyst's qualified results are compared to the recalculated acceptable range, and every analyst is assigned an outcome for the proficiency cycle. All analysts with Results Outside Acceptable Range receive retest samples. The retest results are compared to the acceptable range established by the initial test and the retested analyst's outcome for the proficiency cycle is assigned based on the second comparison.

Test Type	Vial Level	Vial Number	Results #1 Reported	#1 Z Score	Results #2 Reported	#2 Z Score
I	A	2128	0.117	1.000	0.117	1.000
I	E	2540	0.232	0.250	0.241	2.500

Proficiency Cycle Statistics

Level	Lower Limit	Upper Limit	Mean (Avg)	Std Dev	N	Number Out Of Range	
						1st Iteration	2nd Iteration
A	0.109	0.121	0.115	0.002	118	1	0
B	0.071	0.083	0.077	0.002	116	1	0
C	0.195	0.213	0.204	0.003	114	2	0
D	0.135	0.153	0.144	0.003	118	1	0
E	0.219	0.243	0.231	0.004	120	0	0

Notes: Z Score is your reported analytical result compared to the mean in terms of the standard deviation, calculated as (Result-Mean)/StddDev. The Parameter n is the number of results reported which are used to calculate the second iteration mean and standard deviation.

Florida Department of Law Enforcement Alcohol Testing Program

BLOOD ALCOHOL PROFICIENCY INITIAL TEST OUTCOME REPORT

Proficiency Cycle: 22C2

Receive Results By: 10/15/2022

Method: GC

Analyst Name: Rohe, Lisa

Your 22C2 Proficiency test outcome is: Satisfactory

Evaluation Procedure:

First Iteration: For each level, the qualified results reported by participating analysts and reference labs are pooled, the mean, standard deviation and acceptable range are calculated using truncation, and results outside the acceptable range are excluded from the second iteration.

Second iteration: The mean, standard deviation and acceptable range are recalculated using truncation, every analyst's qualified results are compared to the recalculated acceptable range, and every analyst is assigned an outcome for the proficiency cycle. All analysts with Results Outside Acceptable Range receive retest samples. The retest results are compared to the acceptable range established by the initial test and the retested analyst's outcome for the proficiency cycle is assigned based on the second comparison.

Test Type	Vial Level	Vial Number	Results #1 Reported	#1 Z Score	Results #2 Reported	#2 Z Score
I	B	2227	0.080	1.500	0.081	2.000
I	C	2326	0.210	2.000	0.207	1.000

Proficiency Cycle Statistics

Level	Lower Limit	Upper Limit	Mean (Avg)	Std Dev	N	Number Out Of Range	
						1st Iteration	2nd Iteration
A	0.109	0.121	0.115	0.002	118	1	0
B	0.071	0.083	0.077	0.002	116	1	0
C	0.195	0.213	0.204	0.003	114	2	0
D	0.135	0.153	0.144	0.003	118	1	0
E	0.219	0.243	0.231	0.004	120	0	0

Notes: Z Score is your reported analytical result compared to the mean in terms of the standard deviation, calculated as (Result-Mean)/StddDev. The Parameter n is the number of results reported which are used to calculate the second iteration mean and standard deviation.

Florida Department of Law Enforcement Alcohol Testing Program

BLOOD ALCOHOL PROFICIENCY INITIAL TEST OUTCOME REPORT

Proficiency Cycle: 22C2

Receive Results By: 10/20/2022

Method: GC

Analyst Name: Russo, Joseph

Your 22C2 Proficiency test outcome is: Satisfactory

Evaluation Procedure:

First Iteration: For each level, the qualified results reported by participating analysts and reference labs are pooled, the mean, standard deviation and acceptable range are calculated using truncation, and results outside the acceptable range are excluded from the second iteration.

Second iteration: The mean, standard deviation and acceptable range are recalculated using truncation, every analyst's qualified results are compared to the recalculated acceptable range, and every analyst is assigned an outcome for the proficiency cycle. All analysts with Results Outside Acceptable Range receive retest samples. The retest results are compared to the acceptable range established by the initial test and the retested analyst's outcome for the proficiency cycle is assigned based on the second comparison.

Test Type	Vial Level	Vial Number	Results #1 Reported	#1 Z Score	Results #2 Reported	#2 Z Score
I	D	2425	0.142	-0.667	0.142	-0.667
I	E	2527	0.219	-3.000	0.226	-1.250

Proficiency Cycle Statistics

Level	Lower Limit	Upper Limit	Mean (Avg)	Std Dev	N	Number Out Of Range	
						1st Iteration	2nd Iteration
A	0.109	0.121	0.115	0.002	118	1	0
B	0.071	0.083	0.077	0.002	116	1	0
C	0.195	0.213	0.204	0.003	114	2	0
D	0.135	0.153	0.144	0.003	118	1	0
E	0.219	0.243	0.231	0.004	120	0	0

Notes: Z Score is your reported analytical result compared to the mean in terms of the standard deviation, calculated as (Result-Mean)/StddDev. The Parameter n is the number of results reported which are used to calculate the second iteration mean and standard deviation.

Florida Department of Law Enforcement Alcohol Testing Program

BLOOD ALCOHOL PROFICIENCY INITIAL TEST OUTCOME REPORT

Proficiency Cycle: 22C2

Receive Results By: 10/24/2022

Method: GC

Analyst Name: Sanders, Leeona

Your 22C2 Proficiency test outcome is: Satisfactory

Evaluation Procedure:

First Iteration: For each level, the qualified results reported by participating analysts and reference labs are pooled, the mean, standard deviation and acceptable range are calculated using truncation, and results outside the acceptable range are excluded from the second iteration.

Second iteration: The mean, standard deviation and acceptable range are recalculated using truncation, every analyst's qualified results are compared to the recalculated acceptable range, and every analyst is assigned an outcome for the proficiency cycle. All analysts with Results Outside Acceptable Range receive retest samples. The retest results are compared to the acceptable range established by the initial test and the retested analyst's outcome for the proficiency cycle is assigned based on the second comparison.

Test Type	Vial Level	Vial Number	Results #1 Reported	#1 Z Score	Results #2 Reported	#2 Z Score
I	C	2325	0.204	0.000	0.205	0.333
I	D	2424	0.146	0.667	0.145	0.333

Proficiency Cycle Statistics

Level	Lower Limit	Upper Limit	Mean (Avg)	Std Dev	N	Number Out Of Range	
						1st Iteration	2nd Iteration
A	0.109	0.121	0.115	0.002	118	1	0
B	0.071	0.083	0.077	0.002	116	1	0
C	0.195	0.213	0.204	0.003	114	2	0
D	0.135	0.153	0.144	0.003	118	1	0
E	0.219	0.243	0.231	0.004	120	0	0

Notes: Z Score is your reported analytical result compared to the mean in terms of the standard deviation, calculated as (Result-Mean)/StddDev. The Parameter n is the number of results reported which are used to calculate the second iteration mean and standard deviation.

Florida Department of Law Enforcement Alcohol Testing Program

BLOOD ALCOHOL PROFICIENCY INITIAL TEST OUTCOME REPORT

Proficiency Cycle: 22C2

Receive Results By: 10/24/2022

Method: GC

Analyst Name: Sanders, Leeona

Your 22C2 Proficiency test outcome is: Satisfactory

Evaluation Procedure:

First Iteration: For each level, the qualified results reported by participating analysts and reference labs are pooled, the mean, standard deviation and acceptable range are calculated using truncation, and results outside the acceptable range are excluded from the second iteration.

Second iteration: The mean, standard deviation and acceptable range are recalculated using truncation, every analyst's qualified results are compared to the recalculated acceptable range, and every analyst is assigned an outcome for the proficiency cycle. All analysts with Results Outside Acceptable Range receive retest samples. The retest results are compared to the acceptable range established by the initial test and the retested analyst's outcome for the proficiency cycle is assigned based on the second comparison.

Test Type	Vial Level	Vial Number	Results #1 Reported	#1 Z Score	Results #2 Reported	#2 Z Score
I	A	2126	0.117	1.000	0.116	0.500
I	E	2526	0.233	0.500	0.233	0.500

Proficiency Cycle Statistics

Level	Lower Limit	Upper Limit	Mean (Avg)	Std Dev	N	Number Out Of Range	
						1st Iteration	2nd Iteration
A	0.109	0.121	0.115	0.002	118	1	0
B	0.071	0.083	0.077	0.002	116	1	0
C	0.195	0.213	0.204	0.003	114	2	0
D	0.135	0.153	0.144	0.003	118	1	0
E	0.219	0.243	0.231	0.004	120	0	0

Notes: Z Score is your reported analytical result compared to the mean in terms of the standard deviation, calculated as (Result-Mean)/StddDev. The Parameter n is the number of results reported which are used to calculate the second iteration mean and standard deviation.

Florida Department of Law Enforcement Alcohol Testing Program

BLOOD ALCOHOL PROFICIENCY INITIAL TEST OUTCOME REPORT

Proficiency Cycle: 22C2

Receive Results By: 11/02/2022

Method: GC

Analyst Name: Shan, Xiaoqin

Your 22C2 Proficiency test outcome is: Satisfactory

Evaluation Procedure:

First Iteration: For each level, the qualified results reported by participating analysts and reference labs are pooled, the mean, standard deviation and acceptable range are calculated using truncation, and results outside the acceptable range are excluded from the second iteration.

Second iteration: The mean, standard deviation and acceptable range are recalculated using truncation, every analyst's qualified results are compared to the recalculated acceptable range, and every analyst is assigned an outcome for the proficiency cycle. All analysts with Results Outside Acceptable Range receive retest samples. The retest results are compared to the acceptable range established by the initial test and the retested analyst's outcome for the proficiency cycle is assigned based on the second comparison.

Test Type	Vial Level	Vial Number	Results #1 Reported	#1 Z Score	Results #2 Reported	#2 Z Score
I	D	2423	0.143	-0.333	0.143	-0.333
I	E	2525	0.229	-0.500	0.230	-0.250

Proficiency Cycle Statistics

Level	Lower Limit	Upper Limit	Mean (Avg)	Std Dev	N	Number Out Of Range	
						1st Iteration	2nd Iteration
A	0.109	0.121	0.115	0.002	118	1	0
B	0.071	0.083	0.077	0.002	116	1	0
C	0.195	0.213	0.204	0.003	114	2	0
D	0.135	0.153	0.144	0.003	118	1	0
E	0.219	0.243	0.231	0.004	120	0	0

Notes: Z Score is your reported analytical result compared to the mean in terms of the standard deviation, calculated as (Result-Mean)/StddDev. The Parameter n is the number of results reported which are used to calculate the second iteration mean and standard deviation.

Florida Department of Law Enforcement Alcohol Testing Program

BLOOD ALCOHOL PROFICIENCY INITIAL TEST OUTCOME REPORT

Proficiency Cycle: 22C2

Receive Results By: 10/24/2022

Method: GC

Analyst Name: Shanks, Christopher

Your 22C2 Proficiency test outcome is: Satisfactory

Evaluation Procedure:

First Iteration: For each level, the qualified results reported by participating analysts and reference labs are pooled, the mean, standard deviation and acceptable range are calculated using truncation, and results outside the acceptable range are excluded from the second iteration.

Second iteration: The mean, standard deviation and acceptable range are recalculated using truncation, every analyst's qualified results are compared to the recalculated acceptable range, and every analyst is assigned an outcome for the proficiency cycle. All analysts with Results Outside Acceptable Range receive retest samples. The retest results are compared to the acceptable range established by the initial test and the retested analyst's outcome for the proficiency cycle is assigned based on the second comparison.

Test Type	Vial Level	Vial Number	Results #1 Reported	#1 Z Score	Results #2 Reported	#2 Z Score
I	A	2125	0.116	0.500	0.118	1.500
I	B	2223	0.078	0.500	0.080	1.500

Proficiency Cycle Statistics

Level	Lower Limit	Upper Limit	Mean (Avg)	Std Dev	N	Number Out Of Range	
						1st Iteration	2nd Iteration
A	0.109	0.121	0.115	0.002	118	1	0
B	0.071	0.083	0.077	0.002	116	1	0
C	0.195	0.213	0.204	0.003	114	2	0
D	0.135	0.153	0.144	0.003	118	1	0
E	0.219	0.243	0.231	0.004	120	0	0

Notes: Z Score is your reported analytical result compared to the mean in terms of the standard deviation, calculated as (Result-Mean)/Stdev. The Parameter n is the number of results reported which are used to calculate the second iteration mean and standard deviation.

Florida Department of Law Enforcement Alcohol Testing Program

BLOOD ALCOHOL PROFICIENCY INITIAL TEST OUTCOME REPORT

Proficiency Cycle: 22C2

Receive Results By: 10/24/2022

Method: GC

Analyst Name: Shanks, Christopher

Your 22C2 Proficiency test outcome is: Satisfactory

Evaluation Procedure:

First Iteration: For each level, the qualified results reported by participating analysts and reference labs are pooled, the mean, standard deviation and acceptable range are calculated using truncation, and results outside the acceptable range are excluded from the second iteration.

Second iteration: The mean, standard deviation and acceptable range are recalculated using truncation, every analyst's qualified results are compared to the recalculated acceptable range, and every analyst is assigned an outcome for the proficiency cycle. All analysts with Results Outside Acceptable Range receive retest samples. The retest results are compared to the acceptable range established by the initial test and the retested analyst's outcome for the proficiency cycle is assigned based on the second comparison.

Test Type	Vial Level	Vial Number	Results #1 Reported	#1 Z Score	Results #2 Reported	#2 Z Score
I	C	2323	0.202	-0.667	0.204	0.000
I	D	2422	0.148	1.333	0.144	0.000

Proficiency Cycle Statistics

Level	Lower Limit	Upper Limit	Mean (Avg)	Std Dev	N	Number Out Of Range	
						1st Iteration	2nd Iteration
A	0.109	0.121	0.115	0.002	118	1	0
B	0.071	0.083	0.077	0.002	116	1	0
C	0.195	0.213	0.204	0.003	114	2	0
D	0.135	0.153	0.144	0.003	118	1	0
E	0.219	0.243	0.231	0.004	120	0	0

Notes: Z Score is your reported analytical result compared to the mean in terms of the standard deviation, calculated as (Result-Mean)/StddDev. The Parameter n is the number of results reported which are used to calculate the second iteration mean and standard deviation.

Florida Department of Law Enforcement Alcohol Testing Program

BLOOD ALCOHOL PROFICIENCY INITIAL TEST OUTCOME REPORT

Proficiency Cycle: 22C2

Receive Results By: 10/20/2022

Method: GC

Analyst Name: Shaw, Kristie

Your 22C2 Proficiency test outcome is: Satisfactory

Evaluation Procedure:

First Iteration: For each level, the qualified results reported by participating analysts and reference labs are pooled, the mean, standard deviation and acceptable range are calculated using truncation, and results outside the acceptable range are excluded from the second iteration.

Second iteration: The mean, standard deviation and acceptable range are recalculated using truncation, every analyst's qualified results are compared to the recalculated acceptable range, and every analyst is assigned an outcome for the proficiency cycle. All analysts with Results Outside Acceptable Range receive retest samples. The retest results are compared to the acceptable range established by the initial test and the retested analyst's outcome for the proficiency cycle is assigned based on the second comparison.

Test Type	Vial Level	Vial Number	Results #1 Reported	#1 Z Score	Results #2 Reported	#2 Z Score
I	A	2123	0.115	0.000	0.115	0.000
I	E	2524	0.231	0.000	0.231	0.000

Proficiency Cycle Statistics

Level	Lower Limit	Upper Limit	Mean (Avg)	Std Dev	N	Number Out Of Range	
						1st Iteration	2nd Iteration
A	0.109	0.121	0.115	0.002	118	1	0
B	0.071	0.083	0.077	0.002	116	1	0
C	0.195	0.213	0.204	0.003	114	2	0
D	0.135	0.153	0.144	0.003	118	1	0
E	0.219	0.243	0.231	0.004	120	0	0

Notes: Z Score is your reported analytical result compared to the mean in terms of the standard deviation, calculated as (Result-Mean)/Stdev. The Parameter n is the number of results reported which are used to calculate the second iteration mean and standard deviation.

Florida Department of Law Enforcement Alcohol Testing Program

BLOOD ALCOHOL PROFICIENCY INITIAL TEST OUTCOME REPORT

Proficiency Cycle: 22C2

Receive Results By: 10/20/2022

Method: GC

Analyst Name: Shaw, Kristie

Your 22C2 Proficiency test outcome is: Satisfactory

Evaluation Procedure:

First Iteration: For each level, the qualified results reported by participating analysts and reference labs are pooled, the mean, standard deviation and acceptable range are calculated using truncation, and results outside the acceptable range are excluded from the second iteration.

Second iteration: The mean, standard deviation and acceptable range are recalculated using truncation, every analyst's qualified results are compared to the recalculated acceptable range, and every analyst is assigned an outcome for the proficiency cycle. All analysts with Results Outside Acceptable Range receive retest samples. The retest results are compared to the acceptable range established by the initial test and the retested analyst's outcome for the proficiency cycle is assigned based on the second comparison.

Test Type	Vial Level	Vial Number	Results #1 Reported	#1 Z Score	Results #2 Reported	#2 Z Score
I	B	2222	0.078	0.500	0.078	0.500
I	C	2322	0.205	0.333	0.205	0.333

Proficiency Cycle Statistics

Level	Lower Limit	Upper Limit	Mean (Avg)	Std Dev	N	Number Out Of Range	
						1st Iteration	2nd Iteration
A	0.109	0.121	0.115	0.002	118	1	0
B	0.071	0.083	0.077	0.002	116	1	0
C	0.195	0.213	0.204	0.003	114	2	0
D	0.135	0.153	0.144	0.003	118	1	0
E	0.219	0.243	0.231	0.004	120	0	0

Notes: Z Score is your reported analytical result compared to the mean in terms of the standard deviation, calculated as (Result-Mean)/StddDev. The Parameter n is the number of results reported which are used to calculate the second iteration mean and standard deviation.

Florida Department of Law Enforcement Alcohol Testing Program

BLOOD ALCOHOL PROFICIENCY INITIAL TEST OUTCOME REPORT

Proficiency Cycle: 22C2

Receive Results By: 10/17/2022

Method: GC

Analyst Name: Shoff, Elisa

Your 22C2 Proficiency test outcome is: Satisfactory

Evaluation Procedure:

First Iteration: For each level, the qualified results reported by participating analysts and reference labs are pooled, the mean, standard deviation and acceptable range are calculated using truncation, and results outside the acceptable range are excluded from the second iteration.

Second iteration: The mean, standard deviation and acceptable range are recalculated using truncation, every analyst's qualified results are compared to the recalculated acceptable range, and every analyst is assigned an outcome for the proficiency cycle. All analysts with Results Outside Acceptable Range receive retest samples. The retest results are compared to the acceptable range established by the initial test and the retested analyst's outcome for the proficiency cycle is assigned based on the second comparison.

Test Type	Vial Level	Vial Number	Results #1 Reported	#1 Z Score	Results #2 Reported	#2 Z Score
I	D	2421	0.145	0.333	0.144	0.000
I	E	2523	0.229	-0.500	0.226	-1.250

Proficiency Cycle Statistics

Level	Lower Limit	Upper Limit	Mean (Avg)	Std Dev	N	Number Out Of Range	
						1st Iteration	2nd Iteration
A	0.109	0.121	0.115	0.002	118	1	0
B	0.071	0.083	0.077	0.002	116	1	0
C	0.195	0.213	0.204	0.003	114	2	0
D	0.135	0.153	0.144	0.003	118	1	0
E	0.219	0.243	0.231	0.004	120	0	0

Notes: Z Score is your reported analytical result compared to the mean in terms of the standard deviation, calculated as (Result-Mean)/StddDev. The Parameter n is the number of results reported which are used to calculate the second iteration mean and standard deviation.

Florida Department of Law Enforcement Alcohol Testing Program

BLOOD ALCOHOL PROFICIENCY INITIAL TEST OUTCOME REPORT

Proficiency Cycle: 22C2

Receive Results By: 10/17/2022

Method: GC

Analyst Name: Slone, Caitlin

Your 22C2 Proficiency test outcome is: Satisfactory

Evaluation Procedure:

First Iteration: For each level, the qualified results reported by participating analysts and reference labs are pooled, the mean, standard deviation and acceptable range are calculated using truncation, and results outside the acceptable range are excluded from the second iteration.

Second iteration: The mean, standard deviation and acceptable range are recalculated using truncation, every analyst's qualified results are compared to the recalculated acceptable range, and every analyst is assigned an outcome for the proficiency cycle. All analysts with Results Outside Acceptable Range receive retest samples. The retest results are compared to the acceptable range established by the initial test and the retested analyst's outcome for the proficiency cycle is assigned based on the second comparison.

Test Type	Vial Level	Vial Number	Results #1 Reported	#1 Z Score	Results #2 Reported	#2 Z Score
I	A	2145	0.119	2.000	0.120	2.500
I	B	2245	0.081	2.000	0.081	2.000
I	C	2346	0.207	1.000	0.209	1.667
I	D	2460	0.147	1.000	0.149	1.667
I	E	2546	0.236	1.250	0.238	1.750

Proficiency Cycle Statistics

Level	Lower Limit	Upper Limit	Mean (Avg)	Std Dev	N	Number Out Of Range	
						1st Iteration	2nd Iteration
A	0.109	0.121	0.115	0.002	118	1	0
B	0.071	0.083	0.077	0.002	116	1	0
C	0.195	0.213	0.204	0.003	114	2	0
D	0.135	0.153	0.144	0.003	118	1	0
E	0.219	0.243	0.231	0.004	120	0	0

Notes: Z Score is your reported analytical result compared to the mean in terms of the standard deviation, calculated as (Result-Mean)/StddDev. The Parameter n is the number of results reported which are used to calculate the second iteration mean and standard deviation.

Florida Department of Law Enforcement Alcohol Testing Program

BLOOD ALCOHOL PROFICIENCY INITIAL TEST OUTCOME REPORT

Proficiency Cycle: 22C2

Receive Results By: 11/01/2022

Method: GC

Analyst Name: Slone, Caitlin

Your 22C2 Proficiency test outcome is: Satisfactory

Evaluation Procedure:

First Iteration: For each level, the qualified results reported by participating analysts and reference labs are pooled, the mean, standard deviation and acceptable range are calculated using truncation, and results outside the acceptable range are excluded from the second iteration.

Second iteration: The mean, standard deviation and acceptable range are recalculated using truncation, every analyst's qualified results are compared to the recalculated acceptable range, and every analyst is assigned an outcome for the proficiency cycle. All analysts with Results Outside Acceptable Range receive retest samples. The retest results are compared to the acceptable range established by the initial test and the retested analyst's outcome for the proficiency cycle is assigned based on the second comparison.

Test Type	Vial Level	Vial Number	Results #1 Reported	#1 Z Score	Results #2 Reported	#2 Z Score
I	A	2144	0.113	-1.000	0.117	1.000
I	B	2260	0.079	1.000	0.078	0.500
I	C	2359	0.204	0.000	0.205	0.333
I	D	2445	0.144	0.000	0.144	0.000
I	E	2545	0.232	0.250	0.232	0.250

Proficiency Cycle Statistics

Level	Lower Limit	Upper Limit	Mean (Avg)	Std Dev	N	Number Out Of Range	
						1st Iteration	2nd Iteration
A	0.109	0.121	0.115	0.002	118	1	0
B	0.071	0.083	0.077	0.002	116	1	0
C	0.195	0.213	0.204	0.003	114	2	0
D	0.135	0.153	0.144	0.003	118	1	0
E	0.219	0.243	0.231	0.004	120	0	0

Notes: Z Score is your reported analytical result compared to the mean in terms of the standard deviation, calculated as (Result-Mean)/StddDev. The Parameter n is the number of results reported which are used to calculate the second iteration mean and standard deviation.

Florida Department of Law Enforcement Alcohol Testing Program

BLOOD ALCOHOL PROFICIENCY INITIAL TEST OUTCOME REPORT

Proficiency Cycle: 22C2

Receive Results By: 10/18/2022

Method: GC

Analyst Name: Slone, Caitlin

Your 22C2 Proficiency test outcome is: Satisfactory

Evaluation Procedure:

First Iteration: For each level, the qualified results reported by participating analysts and reference labs are pooled, the mean, standard deviation and acceptable range are calculated using truncation, and results outside the acceptable range are excluded from the second iteration.

Second iteration: The mean, standard deviation and acceptable range are recalculated using truncation, every analyst's qualified results are compared to the recalculated acceptable range, and every analyst is assigned an outcome for the proficiency cycle. All analysts with Results Outside Acceptable Range receive retest samples. The retest results are compared to the acceptable range established by the initial test and the retested analyst's outcome for the proficiency cycle is assigned based on the second comparison.

Test Type	Vial Level	Vial Number	Results #1 Reported	#1 Z Score	Results #2 Reported	#2 Z Score
I	A	2160	0.118	1.500	0.119	2.000
I	B	2244	0.080	1.500	0.080	1.500
I	C	2358	0.207	1.000	0.209	1.667
I	D	2444	0.148	1.333	0.148	1.333
I	E	2544	0.236	1.250	0.238	1.750

Proficiency Cycle Statistics

Level	Lower Limit	Upper Limit	Mean (Avg)	Std Dev	N	Number Out Of Range	
						1st Iteration	2nd Iteration
A	0.109	0.121	0.115	0.002	118	1	0
B	0.071	0.083	0.077	0.002	116	1	0
C	0.195	0.213	0.204	0.003	114	2	0
D	0.135	0.153	0.144	0.003	118	1	0
E	0.219	0.243	0.231	0.004	120	0	0

Notes: Z Score is your reported analytical result compared to the mean in terms of the standard deviation, calculated as (Result-Mean)/StddDev. The Parameter n is the number of results reported which are used to calculate the second iteration mean and standard deviation.

Florida Department of Law Enforcement Alcohol Testing Program

BLOOD ALCOHOL PROFICIENCY INITIAL TEST OUTCOME REPORT

Proficiency Cycle: 22C2

Receive Results By: 10/31/2022

Method: GC

Analyst Name: Soare, Cornelia

Your 22C2 Proficiency test outcome is: Satisfactory

Evaluation Procedure:

First Iteration: For each level, the qualified results reported by participating analysts and reference labs are pooled, the mean, standard deviation and acceptable range are calculated using truncation, and results outside the acceptable range are excluded from the second iteration.

Second iteration: The mean, standard deviation and acceptable range are recalculated using truncation, every analyst's qualified results are compared to the recalculated acceptable range, and every analyst is assigned an outcome for the proficiency cycle. All analysts with Results Outside Acceptable Range receive retest samples. The retest results are compared to the acceptable range established by the initial test and the retested analyst's outcome for the proficiency cycle is assigned based on the second comparison.

Test Type	Vial Level	Vial Number	Results #1 Reported	#1 Z Score	Results #2 Reported	#2 Z Score
I	A	2159	0.115	0.000	0.117	1.000
I	B	2243	0.077	0.000	0.077	0.000
I	C	2357	0.206	0.667	0.206	0.667
I	D	2443	0.146	0.667	0.146	0.667
I	E	2543	0.233	0.500	0.233	0.500

Proficiency Cycle Statistics

Level	Lower Limit	Upper Limit	Mean (Avg)	Std Dev	N	Number Out Of Range	
						1st Iteration	2nd Iteration
A	0.109	0.121	0.115	0.002	118	1	0
B	0.071	0.083	0.077	0.002	116	1	0
C	0.195	0.213	0.204	0.003	114	2	0
D	0.135	0.153	0.144	0.003	118	1	0
E	0.219	0.243	0.231	0.004	120	0	0

Notes: Z Score is your reported analytical result compared to the mean in terms of the standard deviation, calculated as (Result-Mean)/StddDev. The Parameter n is the number of results reported which are used to calculate the second iteration mean and standard deviation.

Florida Department of Law Enforcement Alcohol Testing Program

BLOOD ALCOHOL PROFICIENCY INITIAL TEST OUTCOME REPORT

Proficiency Cycle: 22C2

Receive Results By: 10/20/2022

Method: GC

Analyst Name: Stewart, Victoria

Your 22C2 Proficiency test outcome is: Satisfactory

Evaluation Procedure:

First Iteration: For each level, the qualified results reported by participating analysts and reference labs are pooled, the mean, standard deviation and acceptable range are calculated using truncation, and results outside the acceptable range are excluded from the second iteration.

Second iteration: The mean, standard deviation and acceptable range are recalculated using truncation, every analyst's qualified results are compared to the recalculated acceptable range, and every analyst is assigned an outcome for the proficiency cycle. All analysts with Results Outside Acceptable Range receive retest samples. The retest results are compared to the acceptable range established by the initial test and the retested analyst's outcome for the proficiency cycle is assigned based on the second comparison.

Test Type	Vial Level	Vial Number	Results #1 Reported	#1 Z Score	Results #2 Reported	#2 Z Score
I	A	2124	0.113	-1.000	0.113	-1.000
I	B	2221	0.076	-0.500	0.076	-0.500

Proficiency Cycle Statistics

Level	Lower Limit	Upper Limit	Mean (Avg)	Std Dev	N	Number Out Of Range	
						1st Iteration	2nd Iteration
A	0.109	0.121	0.115	0.002	118	1	0
B	0.071	0.083	0.077	0.002	116	1	0
C	0.195	0.213	0.204	0.003	114	2	0
D	0.135	0.153	0.144	0.003	118	1	0
E	0.219	0.243	0.231	0.004	120	0	0

Notes: Z Score is your reported analytical result compared to the mean in terms of the standard deviation, calculated as (Result-Mean)/StddDev. The Parameter n is the number of results reported which are used to calculate the second iteration mean and standard deviation.

Florida Department of Law Enforcement Alcohol Testing Program

BLOOD ALCOHOL PROFICIENCY INITIAL TEST OUTCOME REPORT

Proficiency Cycle: 22C2

Receive Results By: 10/21/2022

Method: GC

Analyst Name: Taunt, Sylvia

Your 22C2 Proficiency test outcome is: Satisfactory

Evaluation Procedure:

First Iteration: For each level, the qualified results reported by participating analysts and reference labs are pooled, the mean, standard deviation and acceptable range are calculated using truncation, and results outside the acceptable range are excluded from the second iteration.

Second iteration: The mean, standard deviation and acceptable range are recalculated using truncation, every analyst's qualified results are compared to the recalculated acceptable range, and every analyst is assigned an outcome for the proficiency cycle. All analysts with Results Outside Acceptable Range receive retest samples. The retest results are compared to the acceptable range established by the initial test and the retested analyst's outcome for the proficiency cycle is assigned based on the second comparison.

Test Type	Vial Level	Vial Number	Results #1 Reported	#1 Z Score	Results #2 Reported	#2 Z Score
I	C	2335	0.206	0.667	0.207	1.000
I	D	2440	0.146	0.667	0.146	0.667

Proficiency Cycle Statistics

Level	Lower Limit	Upper Limit	Mean (Avg)	Std Dev	N	Number Out Of Range	
						1st Iteration	2nd Iteration
A	0.109	0.121	0.115	0.002	118	1	0
B	0.071	0.083	0.077	0.002	116	1	0
C	0.195	0.213	0.204	0.003	114	2	0
D	0.135	0.153	0.144	0.003	118	1	0
E	0.219	0.243	0.231	0.004	120	0	0

Notes: Z Score is your reported analytical result compared to the mean in terms of the standard deviation, calculated as (Result-Mean)/StddDev. The Parameter n is the number of results reported which are used to calculate the second iteration mean and standard deviation.

Florida Department of Law Enforcement Alcohol Testing Program

BLOOD ALCOHOL PROFICIENCY INITIAL TEST OUTCOME REPORT

Proficiency Cycle: 22C2

Receive Results By: 10/28/2022

Method: GC

Analyst Name: Taunt, Sylvia

Your 22C2 Proficiency test outcome is: Satisfactory

Evaluation Procedure:

First Iteration: For each level, the qualified results reported by participating analysts and reference labs are pooled, the mean, standard deviation and acceptable range are calculated using truncation, and results outside the acceptable range are excluded from the second iteration.

Second iteration: The mean, standard deviation and acceptable range are recalculated using truncation, every analyst's qualified results are compared to the recalculated acceptable range, and every analyst is assigned an outcome for the proficiency cycle. All analysts with Results Outside Acceptable Range receive retest samples. The retest results are compared to the acceptable range established by the initial test and the retested analyst's outcome for the proficiency cycle is assigned based on the second comparison.

Test Type	Vial Level	Vial Number	Results #1 Reported	#1 Z Score	Results #2 Reported	#2 Z Score
I	A	2140	0.116	0.500	0.116	0.500
I	E	2535	0.232	0.250	0.233	0.500

Proficiency Cycle Statistics

Level	Lower Limit	Upper Limit	Mean (Avg)	Std Dev	N	Number Out Of Range	
						1st Iteration	2nd Iteration
A	0.109	0.121	0.115	0.002	118	1	0
B	0.071	0.083	0.077	0.002	116	1	0
C	0.195	0.213	0.204	0.003	114	2	0
D	0.135	0.153	0.144	0.003	118	1	0
E	0.219	0.243	0.231	0.004	120	0	0

Notes: Z Score is your reported analytical result compared to the mean in terms of the standard deviation, calculated as (Result-Mean)/Stdev. The Parameter n is the number of results reported which are used to calculate the second iteration mean and standard deviation.

Florida Department of Law Enforcement Alcohol Testing Program

BLOOD ALCOHOL PROFICIENCY INITIAL TEST OUTCOME REPORT

Proficiency Cycle: 22C2

Receive Results By: 10/24/2022

Method: GC

Analyst Name: Taunt, Sylvia

Your 22C2 Proficiency test outcome is: Satisfactory

Evaluation Procedure:

First Iteration: For each level, the qualified results reported by participating analysts and reference labs are pooled, the mean, standard deviation and acceptable range are calculated using truncation, and results outside the acceptable range are excluded from the second iteration.

Second iteration: The mean, standard deviation and acceptable range are recalculated using truncation, every analyst's qualified results are compared to the recalculated acceptable range, and every analyst is assigned an outcome for the proficiency cycle. All analysts with Results Outside Acceptable Range receive retest samples. The retest results are compared to the acceptable range established by the initial test and the retested analyst's outcome for the proficiency cycle is assigned based on the second comparison.

Test Type	Vial Level	Vial Number	Results #1 Reported	#1 Z Score	Results #2 Reported	#2 Z Score
I	B	2240	0.078	0.500	0.078	0.500
I	C	2331	0.207	1.000	0.207	1.000

Proficiency Cycle Statistics

Level	Lower Limit	Upper Limit	Mean (Avg)	Std Dev	N	Number Out Of Range	
						1st Iteration	2nd Iteration
A	0.109	0.121	0.115	0.002	118	1	0
B	0.071	0.083	0.077	0.002	116	1	0
C	0.195	0.213	0.204	0.003	114	2	0
D	0.135	0.153	0.144	0.003	118	1	0
E	0.219	0.243	0.231	0.004	120	0	0

Notes: Z Score is your reported analytical result compared to the mean in terms of the standard deviation, calculated as (Result-Mean)/StddDev. The Parameter n is the number of results reported which are used to calculate the second iteration mean and standard deviation.

Florida Department of Law Enforcement Alcohol Testing Program

BLOOD ALCOHOL PROFICIENCY INITIAL TEST OUTCOME REPORT

Proficiency Cycle: 22C2

Receive Results By: 10/17/2022

Method: GC

Analyst Name: Tiscione, Nicholas

Your 22C2 Proficiency test outcome is: Satisfactory

Evaluation Procedure:

First Iteration: For each level, the qualified results reported by participating analysts and reference labs are pooled, the mean, standard deviation and acceptable range are calculated using truncation, and results outside the acceptable range are excluded from the second iteration.

Second iteration: The mean, standard deviation and acceptable range are recalculated using truncation, every analyst's qualified results are compared to the recalculated acceptable range, and every analyst is assigned an outcome for the proficiency cycle. All analysts with Results Outside Acceptable Range receive retest samples. The retest results are compared to the acceptable range established by the initial test and the retested analyst's outcome for the proficiency cycle is assigned based on the second comparison.

Test Type	Vial Level	Vial Number	Results #1 Reported	#1 Z Score	Results #2 Reported	#2 Z Score
I	D	2439	0.144	0.000	0.144	0.000
I	E	2522	0.231	0.000	0.231	0.000

Proficiency Cycle Statistics

Level	Lower Limit	Upper Limit	Mean (Avg)	Std Dev	N	Number Out Of Range	
						1st Iteration	2nd Iteration
A	0.109	0.121	0.115	0.002	118	1	0
B	0.071	0.083	0.077	0.002	116	1	0
C	0.195	0.213	0.204	0.003	114	2	0
D	0.135	0.153	0.144	0.003	118	1	0
E	0.219	0.243	0.231	0.004	120	0	0

Notes: Z Score is your reported analytical result compared to the mean in terms of the standard deviation, calculated as (Result-Mean)/StddDev. The Parameter n is the number of results reported which are used to calculate the second iteration mean and standard deviation.

Florida Department of Law Enforcement Alcohol Testing Program

BLOOD ALCOHOL PROFICIENCY INITIAL TEST OUTCOME REPORT

Proficiency Cycle: 22C2

Receive Results By: 10/19/2022

Method: GC

Analyst Name: Toth, Mary Lou

Your 22C2 Proficiency test outcome is: Satisfactory

Evaluation Procedure:

First Iteration: For each level, the qualified results reported by participating analysts and reference labs are pooled, the mean, standard deviation and acceptable range are calculated using truncation, and results outside the acceptable range are excluded from the second iteration.

Second iteration: The mean, standard deviation and acceptable range are recalculated using truncation, every analyst's qualified results are compared to the recalculated acceptable range, and every analyst is assigned an outcome for the proficiency cycle. All analysts with Results Outside Acceptable Range receive retest samples. The retest results are compared to the acceptable range established by the initial test and the retested analyst's outcome for the proficiency cycle is assigned based on the second comparison.

Test Type	Vial Level	Vial Number	Results #1 Reported	#1 Z Score	Results #2 Reported	#2 Z Score
I	A	2139	0.117	1.000	0.118	1.500
I	B	2231	0.077	0.000	0.078	0.500

Proficiency Cycle Statistics

Level	Lower Limit	Upper Limit	Mean (Avg)	Std Dev	N	Number Out Of Range	
						1st Iteration	2nd Iteration
A	0.109	0.121	0.115	0.002	118	1	0
B	0.071	0.083	0.077	0.002	116	1	0
C	0.195	0.213	0.204	0.003	114	2	0
D	0.135	0.153	0.144	0.003	118	1	0
E	0.219	0.243	0.231	0.004	120	0	0

Notes: Z Score is your reported analytical result compared to the mean in terms of the standard deviation, calculated as (Result-Mean)/StddDev. The Parameter n is the number of results reported which are used to calculate the second iteration mean and standard deviation.

Florida Department of Law Enforcement Alcohol Testing Program

BLOOD ALCOHOL PROFICIENCY INITIAL TEST OUTCOME REPORT

Proficiency Cycle: 22C2

Receive Results By: 10/24/2022

Method: GC

Analyst Name: Tran-Cook, Thu

Your 22C2 Proficiency test outcome is: Satisfactory

Evaluation Procedure:

First Iteration: For each level, the qualified results reported by participating analysts and reference labs are pooled, the mean, standard deviation and acceptable range are calculated using truncation, and results outside the acceptable range are excluded from the second iteration.

Second iteration: The mean, standard deviation and acceptable range are recalculated using truncation, every analyst's qualified results are compared to the recalculated acceptable range, and every analyst is assigned an outcome for the proficiency cycle. All analysts with Results Outside Acceptable Range receive retest samples. The retest results are compared to the acceptable range established by the initial test and the retested analyst's outcome for the proficiency cycle is assigned based on the second comparison.

Test Type	Vial Level	Vial Number	Results #1 Reported	#1 Z Score	Results #2 Reported	#2 Z Score
I	C	2336	0.205	0.333	0.203	-0.333
I	D	2438	0.143	-0.333	0.143	-0.333

Proficiency Cycle Statistics

Level	Lower Limit	Upper Limit	Mean (Avg)	Std Dev	N	Number Out Of Range	
						1st Iteration	2nd Iteration
A	0.109	0.121	0.115	0.002	118	1	0
B	0.071	0.083	0.077	0.002	116	1	0
C	0.195	0.213	0.204	0.003	114	2	0
D	0.135	0.153	0.144	0.003	118	1	0
E	0.219	0.243	0.231	0.004	120	0	0

Notes: Z Score is your reported analytical result compared to the mean in terms of the standard deviation, calculated as (Result-Mean)/StddDev. The Parameter n is the number of results reported which are used to calculate the second iteration mean and standard deviation.

Florida Department of Law Enforcement Alcohol Testing Program

BLOOD ALCOHOL PROFICIENCY INITIAL TEST OUTCOME REPORT

Proficiency Cycle: 22C2

Receive Results By: 10/25/2022

Method: GC

Analyst Name: Troescher, Lisa

Your 22C2 Proficiency test outcome is: Satisfactory

Evaluation Procedure:

First Iteration: For each level, the qualified results reported by participating analysts and reference labs are pooled, the mean, standard deviation and acceptable range are calculated using truncation, and results outside the acceptable range are excluded from the second iteration.

Second iteration: The mean, standard deviation and acceptable range are recalculated using truncation, every analyst's qualified results are compared to the recalculated acceptable range, and every analyst is assigned an outcome for the proficiency cycle. All analysts with Results Outside Acceptable Range receive retest samples. The retest results are compared to the acceptable range established by the initial test and the retested analyst's outcome for the proficiency cycle is assigned based on the second comparison.

Test Type	Vial Level	Vial Number	Results #1 Reported	#1 Z Score	Results #2 Reported	#2 Z Score
I	A	2138	0.114	-0.500	0.115	0.000
I	E	2539	0.228	-0.750	0.233	0.500

Proficiency Cycle Statistics

Level	Lower Limit	Upper Limit	Mean (Avg)	Std Dev	N	Number Out Of Range	
						1st Iteration	2nd Iteration
A	0.109	0.121	0.115	0.002	118	1	0
B	0.071	0.083	0.077	0.002	116	1	0
C	0.195	0.213	0.204	0.003	114	2	0
D	0.135	0.153	0.144	0.003	118	1	0
E	0.219	0.243	0.231	0.004	120	0	0

Notes: Z Score is your reported analytical result compared to the mean in terms of the standard deviation, calculated as (Result-Mean)/StddDev. The Parameter n is the number of results reported which are used to calculate the second iteration mean and standard deviation.

Florida Department of Law Enforcement Alcohol Testing Program

BLOOD ALCOHOL PROFICIENCY INITIAL TEST OUTCOME REPORT

Proficiency Cycle: 22C2

Receive Results By: 10/24/2022

Method: GC

Analyst Name: Watts, Hannah

Your 22C2 Proficiency test outcome is: Satisfactory

Evaluation Procedure:

First Iteration: For each level, the qualified results reported by participating analysts and reference labs are pooled, the mean, standard deviation and acceptable range are calculated using truncation, and results outside the acceptable range are excluded from the second iteration.

Second iteration: The mean, standard deviation and acceptable range are recalculated using truncation, every analyst's qualified results are compared to the recalculated acceptable range, and every analyst is assigned an outcome for the proficiency cycle. All analysts with Results Outside Acceptable Range receive retest samples. The retest results are compared to the acceptable range established by the initial test and the retested analyst's outcome for the proficiency cycle is assigned based on the second comparison.

Test Type	Vial Level	Vial Number	Results #1 Reported	#1 Z Score	Results #2 Reported	#2 Z Score
I	A	2137	0.118	1.500	0.118	1.500
I	B	2238	0.079	1.000	0.078	0.500

Proficiency Cycle Statistics

Level	Lower Limit	Upper Limit	Mean (Avg)	Std Dev	N	Number Out Of Range	
						1st Iteration	2nd Iteration
A	0.109	0.121	0.115	0.002	118	1	0
B	0.071	0.083	0.077	0.002	116	1	0
C	0.195	0.213	0.204	0.003	114	2	0
D	0.135	0.153	0.144	0.003	118	1	0
E	0.219	0.243	0.231	0.004	120	0	0

Notes: Z Score is your reported analytical result compared to the mean in terms of the standard deviation, calculated as (Result-Mean)/StddDev. The Parameter n is the number of results reported which are used to calculate the second iteration mean and standard deviation.

Florida Department of Law Enforcement Alcohol Testing Program

BLOOD ALCOHOL PROFICIENCY INITIAL TEST OUTCOME REPORT

Proficiency Cycle: 22C2

Receive Results By: 10/16/2022

Method: GC

Analyst Name: West, Jessica

Your 22C2 Proficiency test outcome is: Unsatisfactory

Evaluation Procedure:

First Iteration: For each level, the qualified results reported by participating analysts and reference labs are pooled, the mean, standard deviation and acceptable range are calculated using truncation, and results outside the acceptable range are excluded from the second iteration.

Second iteration: The mean, standard deviation and acceptable range are recalculated using truncation, every analyst's qualified results are compared to the recalculated acceptable range, and every analyst is assigned an outcome for the proficiency cycle. All analysts with Results Outside Acceptable Range receive retest samples. The retest results are compared to the acceptable range established by the initial test and the retested analyst's outcome for the proficiency cycle is assigned based on the second comparison.

Test Type	Vial Level	Vial Number	Results #1 Reported	#1 Z Score	Results #2 Reported	#2 Z Score
I	C	2337	0.201	-0.500	0.185	-4.500
I	D	2437	0.143	-0.333	0.143	-0.333

Proficiency Cycle Statistics

Level	Lower Limit	Upper Limit	Mean (Avg)	Std Dev	N	Number Out Of Range	
						1st Iteration	2nd Iteration
A	0.109	0.121	0.115	0.002	118	1	0
B	0.071	0.083	0.077	0.002	116	1	0
C	0.195	0.213	0.204	0.003	114	2	0
D	0.135	0.153	0.144	0.003	118	1	0
E	0.219	0.243	0.231	0.004	120	0	0

Notes: Z Score is your reported analytical result compared to the mean in terms of the standard deviation, calculated as (Result-Mean)/StddDev. The Parameter n is the number of results reported which are used to calculate the second iteration mean and standard deviation.

Florida Department of Law Enforcement Alcohol Testing Program

BLOOD ALCOHOL PROFICIENCY INITIAL TEST OUTCOME REPORT

Proficiency Cycle: 22C2

Receive Results By: 10/24/2022

Method: GC

Analyst Name: You, Victor

Your 22C2 Proficiency test outcome is: Satisfactory

Evaluation Procedure:

First Iteration: For each level, the qualified results reported by participating analysts and reference labs are pooled, the mean, standard deviation and acceptable range are calculated using truncation, and results outside the acceptable range are excluded from the second iteration.

Second iteration: The mean, standard deviation and acceptable range are recalculated using truncation, every analyst's qualified results are compared to the recalculated acceptable range, and every analyst is assigned an outcome for the proficiency cycle. All analysts with Results Outside Acceptable Range receive retest samples. The retest results are compared to the acceptable range established by the initial test and the retested analyst's outcome for the proficiency cycle is assigned based on the second comparison.

Test Type	Vial Level	Vial Number	Results #1 Reported	#1 Z Score	Results #2 Reported	#2 Z Score
I	B	2237	0.074	-1.500	0.076	-0.500
I	C	2339	0.198	-2.000	0.200	-1.333

Proficiency Cycle Statistics

Level	Lower Limit	Upper Limit	Mean (Avg)	Std Dev	N	Number Out Of Range	
						1st Iteration	2nd Iteration
A	0.109	0.121	0.115	0.002	118	1	0
B	0.071	0.083	0.077	0.002	116	1	0
C	0.195	0.213	0.204	0.003	114	2	0
D	0.135	0.153	0.144	0.003	118	1	0
E	0.219	0.243	0.231	0.004	120	0	0

Notes: Z Score is your reported analytical result compared to the mean in terms of the standard deviation, calculated as (Result-Mean)/Stdev. The Parameter n is the number of results reported which are used to calculate the second iteration mean and standard deviation.

Florida Department of Law Enforcement Alcohol Testing Program

BLOOD ALCOHOL PROFICIENCY INITIAL TEST OUTCOME REPORT

Proficiency Cycle: 22C2

Receive Results By: 10/17/2022

Method: GC

Analyst Name: Zaney, Mary Elizabeth

Your 22C2 Proficiency test outcome is: Satisfactory

Evaluation Procedure:

First Iteration: For each level, the qualified results reported by participating analysts and reference labs are pooled, the mean, standard deviation and acceptable range are calculated using truncation, and results outside the acceptable range are excluded from the second iteration.

Second iteration: The mean, standard deviation and acceptable range are recalculated using truncation, every analyst's qualified results are compared to the recalculated acceptable range, and every analyst is assigned an outcome for the proficiency cycle. All analysts with Results Outside Acceptable Range receive retest samples. The retest results are compared to the acceptable range established by the initial test and the retested analyst's outcome for the proficiency cycle is assigned based on the second comparison.

Test Type	Vial Level	Vial Number	Results #1 Reported	#1 Z Score	Results #2 Reported	#2 Z Score
I	D	2436	0.145	0.333	0.143	-0.333
I	E	2538	0.231	0.000	0.230	-0.250

Proficiency Cycle Statistics

Level	Lower Limit	Upper Limit	Mean (Avg)	Std Dev	N	Number Out Of Range	
						1st Iteration	2nd Iteration
A	0.109	0.121	0.115	0.002	118	1	0
B	0.071	0.083	0.077	0.002	116	1	0
C	0.195	0.213	0.204	0.003	114	2	0
D	0.135	0.153	0.144	0.003	118	1	0
E	0.219	0.243	0.231	0.004	120	0	0

Notes: Z Score is your reported analytical result compared to the mean in terms of the standard deviation, calculated as (Result-Mean)/StddDev. The Parameter n is the number of results reported which are used to calculate the second iteration mean and standard deviation.

Florida Department of Law Enforcement Alcohol Testing Program

BLOOD ALCOHOL PROFICIENCY INITIAL TEST OUTCOME REPORT

Proficiency Cycle: 22C2

Receive Results By: 10/26/2022

Method: GC

Analyst Name: Zumaeta, Edward

Your 22C2 Proficiency test outcome is: Satisfactory

Evaluation Procedure:

First Iteration: For each level, the qualified results reported by participating analysts and reference labs are pooled, the mean, standard deviation and acceptable range are calculated using truncation, and results outside the acceptable range are excluded from the second iteration.

Second iteration: The mean, standard deviation and acceptable range are recalculated using truncation, every analyst's qualified results are compared to the recalculated acceptable range, and every analyst is assigned an outcome for the proficiency cycle. All analysts with Results Outside Acceptable Range receive retest samples. The retest results are compared to the acceptable range established by the initial test and the retested analyst's outcome for the proficiency cycle is assigned based on the second comparison.

Test Type	Vial Level	Vial Number	Results #1 Reported	#1 Z Score	Results #2 Reported	#2 Z Score
I	A	2136	0.115	0.000	0.114	-0.500
I	B	2236	0.077	0.000	0.077	0.000

Proficiency Cycle Statistics

Level	Lower Limit	Upper Limit	Mean (Avg)	Std Dev	N	Number Out Of Range	
						1st Iteration	2nd Iteration
A	0.109	0.121	0.115	0.002	118	1	0
B	0.071	0.083	0.077	0.002	116	1	0
C	0.195	0.213	0.204	0.003	114	2	0
D	0.135	0.153	0.144	0.003	118	1	0
E	0.219	0.243	0.231	0.004	120	0	0

Notes: Z Score is your reported analytical result compared to the mean in terms of the standard deviation, calculated as (Result-Mean)/StddDev. The Parameter n is the number of results reported which are used to calculate the second iteration mean and standard deviation.