

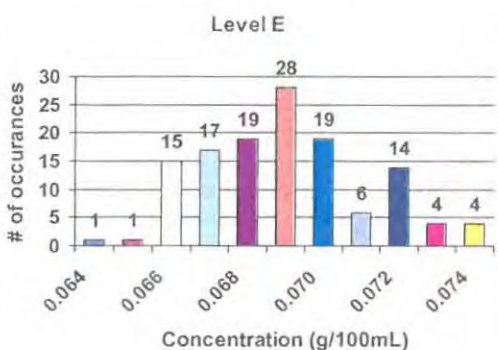
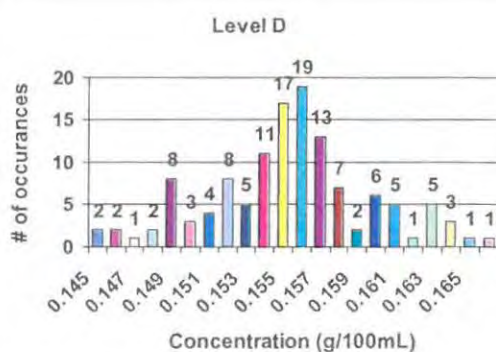
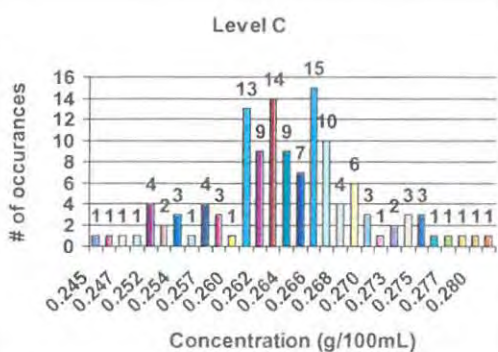
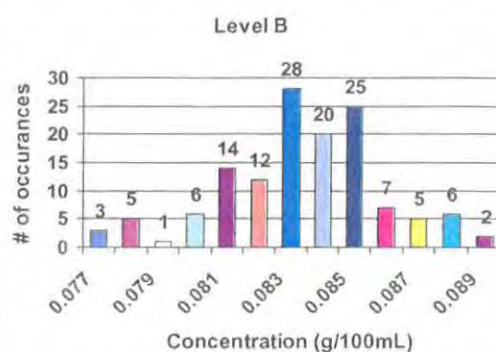
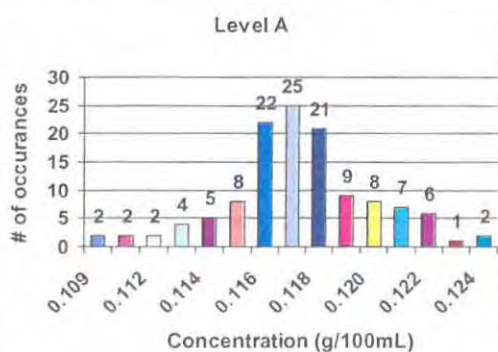
2018 Cycle 1 Blood Proficiency Test Results Summary

Statistics - First Iteration

Level	N	Mean	Std Dev (SD)	Mean - 3 (SD)	Mean + 3 (SD)
A	128	0.117	0.003	0.108	0.126
B	134	0.083	0.003	0.074	0.092
C	130	0.263	0.007	0.242	0.284
D	126	0.155	0.004	0.143	0.167
E	128	0.069	0.002	0.063	0.075

Statistics - Second Iteration

Level	N	Mean	Std Dev (SD)	Mean - 3 (SD)	Mean + 3 (SD)
A	124	0.117	0.003	0.108	0.126
B	134	0.083	0.003	0.074	0.092
C	126	0.264	0.007	0.243	0.285
D	126	0.155	0.004	0.143	0.167
E	128	0.069	0.002	0.063	0.075



Florida Department of Law Enforcement

Alcohol Testing Program

BLOOD ALCOHOL PROFICIENCY INITIAL TEST OUTCOME REPORT

Proficiency Cycle 18C1

Receive Results By: 4/27/2018

Participation Number 15218

Method GC

Analyst Name Adams, Susan

Your 18C1 proficiency test outcome is Satisfactory

Evaluation Procedure

First iteration: For each level, the qualified results reported by participating analysts and reference labs are pooled, the mean, standard deviation and acceptable range are calculated using truncation, and results outside the acceptable range are excluded from the second iteration.

Second iteration: The mean, standard deviation and acceptable range are recalculated using truncation, every analyst's qualified results are compared to the recalculated acceptable range, and every analyst is assigned an outcome for the proficiency cycle. All analysts with Results Outside Acceptable Range receive retest samples. The retest results are compared to the acceptable range established by the initial test and the retested analyst's outcome for the proficiency cycle is assigned based on the second comparison.

Type Test	Level ID	Vial Number	Results #1 Reported (g/dL)	#1 Z Score	Results #2 Reported (g/dL)	#2 Z Score
Initial	C	1301	0.261	-0.3	0.261	-0.3
Initial	D	1401	0.156	0.3	0.157	0.5

Proficiency Cycle Statistics

Level	Lower Limit	Upper Limit	Mean (Average)	Std Dev	N	Number Out of Range	
						1st Iter	2nd Iter
A	0.108	0.126	0.117	0.003	124	2	2
B	0.074	0.092	0.083	0.003	134	0	0
C	0.243	0.285	0.264	0.007	126	2	2
D	0.143	0.167	0.155	0.004	126	0	0
E	0.063	0.075	0.069	0.002	128	0	0

Notes: Z score is your reported analytical result compared to the mean in terms of the standard deviation, calculated as (Result-Mean)/StdDev.
The parameter n is the number of results reported which are used to calculate the second iteration mean and standard deviation.

Florida Department of Law Enforcement

Alcohol Testing Program

BLOOD ALCOHOL PROFICIENCY INITIAL TEST OUTCOME REPORT

Proficiency Cycle 18C1

Receive Results By: 4/27/2018

Participation Number 15261

Method GC

Analyst Name Alford, Ilene

Your 18C1 proficiency test outcome is Satisfactory

Evaluation Procedure

First iteration: For each level, the qualified results reported by participating analysts and reference labs are pooled, the mean, standard deviation and acceptable range are calculated using truncation, and results outside the acceptable range are excluded from the second iteration.

Second iteration: The mean, standard deviation and acceptable range are recalculated using truncation, every analyst's qualified results are compared to the recalculated acceptable range, and every analyst is assigned an outcome for the proficiency cycle. All analysts with Results Outside Acceptable Range receive retest samples. The retest results are compared to the acceptable range established by the initial test and the retested analyst's outcome for the proficiency cycle is assigned based on the second comparison.

Type Test	Level ID	Vial Number	Results #1 Reported (g/dL)	#1 Z Score	Results #2 Reported (g/dL)	#2 Z Score
Initial	C	1302	0.262	-0.1	0.263	0.0
Initial	D	1402	0.154	-0.3	0.154	-0.3

Proficiency Cycle Statistics

Level	Lower Limit	Upper Limit	Mean (Average)	Std Dev	N	Number Out of Range	
						1st Iter	2nd Iter
A	0.108	0.126	0.117	0.003	124	2	2
B	0.074	0.092	0.083	0.003	134	0	0
C	0.243	0.285	0.264	0.007	126	2	2
D	0.143	0.167	0.155	0.004	126	0	0
E	0.063	0.075	0.069	0.002	128	0	0

Notes: Z score is your reported analytical result compared to the mean in terms of the standard deviation, calculated as (Result-Mean)/StdDev.

The parameter n is the number of results reported which are used to calculate the second iteration mean and standard deviation.

Florida Department of Law Enforcement

Alcohol Testing Program

BLOOD ALCOHOL PROFICIENCY INITIAL TEST OUTCOME REPORT

Proficiency Cycle 18C1

Receive Results By: 4/27/2018

Participation Number 15075

Method GC

Analyst Name Allard, Roger

Your 18C1 proficiency test outcome is Satisfactory

Evaluation Procedure

First iteration: For each level, the qualified results reported by participating analysts and reference labs are pooled, the mean, standard deviation and acceptable range are calculated using truncation, and results outside the acceptable range are excluded from the second iteration.

Second iteration: The mean, standard deviation and acceptable range are recalculated using truncation, every analyst's qualified results are compared to the recalculated acceptable range, and every analyst is assigned an outcome for the proficiency cycle. All analysts with Results Outside Acceptable Range receive retest samples. The retest results are compared to the acceptable range established by the initial test and the retested analyst's outcome for the proficiency cycle is assigned based on the second comparison.

Type Test	Level ID	Vial Number	Results #1 Reported (g/dL)	#1 Z Score	Results #2 Reported (g/dL)	#2 Z Score
Initial	B	1201	0.081	-0.7	0.081	-0.7
Initial	E	1501	0.066	-1.5	0.066	-1.5

Proficiency Cycle Statistics

Level	Lower Limit	Upper Limit	Mean (Average)	Std Dev	N	Number Out of Range	
						1st Iter	2nd Iter
A	0.108	0.126	0.117	0.003	124	2	2
B	0.074	0.092	0.083	0.003	134	0	0
C	0.243	0.285	0.264	0.007	126	2	2
D	0.143	0.167	0.155	0.004	126	0	0
E	0.063	0.075	0.069	0.002	128	0	0

Notes: Z score is your reported analytical result compared to the mean in terms of the standard deviation, calculated as (Result-Mean)/StdDev.
The parameter n is the number of results reported which are used to calculate the second iteration mean and standard deviation.

Florida Department of Law Enforcement

Alcohol Testing Program

BLOOD ALCOHOL PROFICIENCY INITIAL TEST OUTCOME REPORT

Proficiency Cycle 18C1

Receive Results By: 4/27/2018

Participation Number 15097

Method GC

Analyst Name Anderson, Carla

Your 18C1 proficiency test outcome is: **Satisfactory**

Evaluation Procedure

First iteration: For each level, the qualified results reported by participating analysts and reference labs are pooled, the mean, standard deviation and acceptable range are calculated using truncation, and results outside the acceptable range are excluded from the second iteration.

Second iteration: The mean, standard deviation and acceptable range are recalculated using truncation, every analyst's qualified results are compared to the recalculated acceptable range, and every analyst is assigned an outcome for the proficiency cycle. All analysts with Results Outside Acceptable Range receive retest samples. The retest results are compared to the acceptable range established by the initial test and the retested analyst's outcome for the proficiency cycle is assigned based on the second comparison.

Type Test	Level ID	Vial Number	Results #1 Reported (g/dL)	#1 Z Score	Results #2 Reported (g/dL)	#2 Z Score
Initial	A	1133	0.111	-2.0	0.111	-2.0
Initial	B	1235	0.078	-1.7	0.078	-1.7
Initial	C	1333	0.246	-2.4	0.247	-2.3
Initial	D	1432	0.149	-1.5	0.146	-2.3
Initial	E	1532	0.070	0.5	0.070	0.5

Proficiency Cycle Statistics

Level	Lower Limit	Upper Limit	Mean (Average)	Std Dev	N	Number Out of Range	
						1st Iter	2nd Iter
A	0.108	0.126	0.117	0.003	124	2	2
B	0.074	0.092	0.083	0.003	134	0	0
C	0.243	0.285	0.264	0.007	126	2	2
D	0.143	0.167	0.155	0.004	126	0	0
E	0.063	0.075	0.069	0.002	130	0	0

Notes: Z score is your reported analytical result compared to the mean in terms of the standard deviation, calculated as (Result-Mean)/StdDev.
The parameter n is the number of results reported which are used to calculate the second iteration mean and standard deviation.

Florida Department of Law Enforcement

Alcohol Testing Program

BLOOD ALCOHOL PROFICIENCY INITIAL TEST OUTCOME REPORT

Proficiency Cycle 18C1

Receive Results By: 4/27/2018

Participation Number 15086

Method GC

Analyst Name Ashfaque, Fauzia

Your 18C1 proficiency test outcome is: **Satisfactory**

Evaluation Procedure

First iteration: For each level, the qualified results reported by participating analysts and reference labs are pooled, the mean, standard deviation and acceptable range are calculated using truncation, and results outside the acceptable range are excluded from the second iteration.

Second iteration: The mean, standard deviation and acceptable range are recalculated using truncation, every analyst's qualified results are compared to the recalculated acceptable range, and every analyst is assigned an outcome for the proficiency cycle. All analysts with Results Outside Acceptable Range receive retest samples. The retest results are compared to the acceptable range established by the initial test and the retested analyst's outcome for the proficiency cycle is assigned based on the second comparison.

Type Test	Level ID	Vial Number	Results #1 Reported (g/dL)	#1 Z Score	Results #2 Reported (g/dL)	#2 Z Score
Initial	A	1136	0.119	0.7	0.114	-1.0
Initial	B	1238	0.084	0.3	0.081	-0.7
Initial	C	1336	0.257	-0.9	0.257	-0.9
Initial	D	1435	0.156	0.3	0.161	1.5
Initial	E	1535	0.068	-0.5	0.068	-0.5

Proficiency Cycle Statistics

Level	Lower Limit	Upper Limit	Mean (Average)	Std Dev	N	Number Out of Range	
						1st Iter	2nd Iter
A	0.108	0.126	0.117	0.003	124	2	2
B	0.074	0.092	0.083	0.003	134	0	0
C	0.243	0.285	0.264	0.007	126	2	2
D	0.143	0.167	0.155	0.004	126	0	0
E	0.063	0.075	0.069	0.002	130	0	0

Notes: Z score is your reported analytical result compared to the mean in terms of the standard deviation, calculated as (Result-Mean)/StdDev.
The parameter n is the number of results reported which are used to calculate the second iteration mean and standard deviation.

Florida Department of Law Enforcement

Alcohol Testing Program

BLOOD ALCOHOL PROFICIENCY RE-TEST OUTCOME REPORT

Proficiency Cycle 18C1 Receive Results By: 5/18/2018 Participation Number 15171 Method GC
 Analyst Name Baldwin, Jacquelyn

Your 18C1 proficiency test outcome is Satisfactory - This report supercedes all other reports for this proficiency cycle

Evaluation Procedure

First iteration: For each level, the qualified results reported by participating analysts and reference labs are pooled, the mean, standard deviation and acceptable range are calculated using truncation, and results outside the acceptable range are excluded from the second iteration.

Second iteration: The mean, standard deviation and acceptable range are recalculated using truncation, every analyst's qualified results are compared to the recalculated acceptable range, and every analyst is assigned an outcome for the proficiency cycle. All analysts with Results Outside Acceptable Range receive retest samples. The retest results are compared to the acceptable range established by the initial test and the retested analyst's outcome for the proficiency cycle is assigned based on the second comparison.

Type Test	Level ID	Vial Number	Results #1 Reported (g/dL)	#1 Z Score	Results #2 Reported (g/dL)	#2 Z Score
Re-Test	A	1170	0.117	0.0	0.115	-0.7
Re-Test	B	1271	0.078	-1.7	0.079	-1.3
Re-Test	C	1370	0.245	-2.7	0.244	-2.9
Re-Test	D	1468	0.150	-1.3	0.151	-1.0
Re-Test	E	1571	0.068	-0.5	0.067	-1.0

Proficiency Cycle Statistics

Level	Lower Limit	Upper Limit	Mean (Average)	Std Dev	N	Number Out of Range	
						1st Iter	2nd Iter
A	0.108	0.126	0.117	0.003	124	2	2
B	0.074	0.092	0.083	0.003	134	0	0
C	0.243	0.285	0.264	0.007	126	2	2
D	0.143	0.167	0.155	0.004	126	0	0
E	0.063	0.075	0.069	0.002	128	0	0

Notes: Z score is your reported analytical result compared to the mean in terms of the standard deviation, calculated as (Result-Mean)/StdDev.
 The parameter n is the number of results reported which are used to calculate the second iteration mean and standard deviation.

Florida Department of Law Enforcement

Alcohol Testing Program

BLOOD ALCOHOL PROFICIENCY INITIAL TEST OUTCOME REPORT

Proficiency Cycle 18C1

Receive Results By: 4/27/2018

Participation Number 15171

Method GC

Analyst Name Baldwin, Jacquelyn

Your 18C1 proficiency test outcome is: **Unsatisfactory**

Evaluation Procedure

First iteration: For each level, the qualified results reported by participating analysts and reference labs are pooled, the mean, standard deviation and acceptable range are calculated using truncation, and results outside the acceptable range are excluded from the second iteration.

Second iteration: The mean, standard deviation and acceptable range are recalculated using truncation, every analyst's qualified results are compared to the recalculated acceptable range, and every analyst is assigned an outcome for the proficiency cycle. All analysts with Results Outside Acceptable Range receive retest samples. The retest results are compared to the acceptable range established by the initial test and the retested analyst's outcome for the proficiency cycle is assigned based on the second comparison.

Type Test	Level ID	Vial Number	Results #1 Reported (g/dL)	#1 Z Score	Results #2 Reported (g/dL)	#2 Z Score
Initial	A	1131	0.107	-3.3	0.105	-4.0
Initial	B	1233	0.077	-2.0	0.080	-1.0
Initial	C	1331	0.265	0.3	0.260	-0.4
Initial	D	1431	0.149	-1.5	0.148	-1.8
Initial	E	1530	0.074	2.5	0.070	0.5

Proficiency Cycle Statistics

Level	Lower Limit	Upper Limit	Mean (Average)	Std Dev	N	Number Out of Range	
						1st Iter	2nd Iter
A	0.108	0.126	0.117	0.003	124	2	2
B	0.074	0.092	0.083	0.003	134	0	0
C	0.243	0.285	0.264	0.007	126	2	2
D	0.143	0.167	0.155	0.004	126	0	0
E	0.063	0.075	0.069	0.002	130	0	0

Notes: Z score is your reported analytical result compared to the mean in terms of the standard deviation, calculated as (Result-Mean)/StdDev.
The parameter n is the number of results reported which are used to calculate the second iteration mean and standard deviation.

Florida Department of Law Enforcement

Alcohol Testing Program

BLOOD ALCOHOL PROFICIENCY INITIAL TEST OUTCOME REPORT

Proficiency Cycle 18C1

Receive Results By: 4/27/2018

Participation Number 15090

Method GC

Analyst Name Boland, Diane

Your 18C1 proficiency test outcome is Satisfactory

Evaluation Procedure

First iteration: For each level, the qualified results reported by participating analysts and reference labs are pooled, the mean, standard deviation and acceptable range are calculated using truncation, and results outside the acceptable range are excluded from the second iteration.

Second iteration: The mean, standard deviation and acceptable range are recalculated using truncation, every analyst's qualified results are compared to the recalculated acceptable range, and every analyst is assigned an outcome for the proficiency cycle. All analysts with Results Outside Acceptable Range receive retest samples. The retest results are compared to the acceptable range established by the initial test and the retested analyst's outcome for the proficiency cycle is assigned based on the second comparison.

Type Test	Level ID	Vial Number	Results #1 Reported (g/dL)	#1 Z Score	Results #2 Reported (g/dL)	#2 Z Score
Initial	B	1202	0.081	-0.7	0.082	-0.3
Initial	E	1502	0.066	-1.5	0.066	-1.5

Proficiency Cycle Statistics

Level	Lower Limit	Upper Limit	Mean (Average)	Std Dev	N	Number Out of Range	
						1st Iter	2nd Iter
A	0.108	0.126	0.117	0.003	124	2	2
B	0.074	0.092	0.083	0.003	134	0	0
C	0.243	0.285	0.264	0.007	126	2	2
D	0.143	0.167	0.155	0.004	126	0	0
E	0.063	0.075	0.069	0.002	128	0	0

Notes: Z score is your reported analytical result compared to the mean in terms of the standard deviation, calculated as (Result-Mean)/StdDev.
The parameter n is the number of results reported which are used to calculate the second iteration mean and standard deviation.

Florida Department of Law Enforcement

Alcohol Testing Program

BLOOD ALCOHOL PROFICIENCY INITIAL TEST OUTCOME REPORT

Proficiency Cycle 18C1

Receive Results By: 4/27/2018

Participation Number 15237

Method GC

Analyst Name Butz, Jonathan

Your 18C1 proficiency test outcome is Satisfactory

Evaluation Procedure

First iteration: For each level, the qualified results reported by participating analysts and reference labs are pooled, the mean, standard deviation and acceptable range are calculated using truncation, and results outside the acceptable range are excluded from the second iteration.

Second iteration: The mean, standard deviation and acceptable range are recalculated using truncation, every analyst's qualified results are compared to the recalculated acceptable range, and every analyst is assigned an outcome for the proficiency cycle. All analysts with Results Outside Acceptable Range receive retest samples. The retest results are compared to the acceptable range established by the initial test and the retested analyst's outcome for the proficiency cycle is assigned based on the second comparison.

Type Test	Level ID	Vial Number	Results #1 Reported (g/dL)	#1 Z Score	Results #2 Reported (g/dL)	#2 Z Score
Initial	B	1203	0.088	1.7	0.085	0.7
Initial	D	1403	0.163	2.0	0.157	0.5

Proficiency Cycle Statistics

Level	Lower Limit	Upper Limit	Mean (Average)	Std Dev	N	Number Out of Range	
						1st Iter	2nd Iter
A	0.108	0.126	0.117	0.003	124	2	2
B	0.074	0.092	0.083	0.003	134	0	0
C	0.243	0.285	0.264	0.007	126	2	2
D	0.143	0.167	0.155	0.004	126	0	0
E	0.063	0.075	0.069	0.002	128	0	0

Notes: Z score is your reported analytical result compared to the mean in terms of the standard deviation, calculated as $(\text{Result} - \text{Mean}) / \text{StdDev}$.
The parameter n is the number of results reported which are used to calculate the second iteration mean and standard deviation.

Florida Department of Law Enforcement

Alcohol Testing Program

BLOOD ALCOHOL PROFICIENCY INITIAL TEST OUTCOME REPORT

Proficiency Cycle 18C1

Receive Results By: 4/27/2018

Participation Number 15221

Method GC

Analyst Name Cangiano, Carol

Your 18C1 proficiency test outcome is Satisfactory

Evaluation Procedure

First iteration: For each level, the qualified results reported by participating analysts and reference labs are pooled, the mean, standard deviation and acceptable range are calculated using truncation, and results outside the acceptable range are excluded from the second iteration.

Second iteration: The mean, standard deviation and acceptable range are recalculated using truncation, every analyst's qualified results are compared to the recalculated acceptable range, and every analyst is assigned an outcome for the proficiency cycle. All analysts with Results Outside Acceptable Range receive retest samples. The retest results are compared to the acceptable range established by the initial test and the retested analyst's outcome for the proficiency cycle is assigned based on the second comparison.

Type Test	Level ID	Vial Number	Results #1 Reported (g/dL)	#1 Z Score	Results #2 Reported (g/dL)	#2 Z Score
Initial	A	1101	0.122	1.7	0.120	1.0
Initial	D	1404	0.163	2.0	0.159	1.0

Proficiency Cycle Statistics

Level	Lower Limit	Upper Limit	Mean (Average)	Std Dev	N	Number Out of Range	
						1st Iter	2nd Iter
A	0.108	0.126	0.117	0.003	124	2	2
B	0.074	0.092	0.083	0.003	134	0	0
C	0.243	0.285	0.264	0.007	126	2	2
D	0.143	0.167	0.155	0.004	126	0	0
E	0.063	0.075	0.069	0.002	128	0	0

Notes: Z score is your reported analytical result compared to the mean in terms of the standard deviation, calculated as (Result-Mean)/StdDev.
The parameter n is the number of results reported which are used to calculate the second iteration mean and standard deviation.

Florida Department of Law Enforcement

Alcohol Testing Program

BLOOD ALCOHOL PROFICIENCY INITIAL TEST OUTCOME REPORT

Proficiency Cycle 18C1

Receive Results By: 4/27/2018

Participation Number 15215

Method GC

Analyst Name Carey, Regina

Your 18C1 proficiency test outcome is Satisfactory

Evaluation Procedure

First iteration: For each level, the qualified results reported by participating analysts and reference labs are pooled, the mean, standard deviation and acceptable range are calculated using truncation, and results outside the acceptable range are excluded from the second iteration.

Second iteration: The mean, standard deviation and acceptable range are recalculated using truncation, every analyst's qualified results are compared to the recalculated acceptable range, and every analyst is assigned an outcome for the proficiency cycle. All analysts with Results Outside Acceptable Range receive retest samples. The retest results are compared to the acceptable range established by the initial test and the retested analyst's outcome for the proficiency cycle is assigned based on the second comparison.

Type Test	Level ID	Vial Number	Results #1 Reported (g/dL)	#1 Z Score	Results #2 Reported (g/dL)	#2 Z Score
Initial	A	1102	0.118	0.3	0.119	0.7
Initial	B	1204	0.085	0.7	0.084	0.3

Proficiency Cycle Statistics

Level	Lower Limit	Upper Limit	Mean (Average)	Std Dev	N	Number Out of Range	
						1st Iter	2nd Iter
A	0.108	0.126	0.117	0.003	124	2	2
B	0.074	0.092	0.083	0.003	134	0	0
C	0.243	0.285	0.264	0.007	126	2	2
D	0.143	0.167	0.155	0.004	126	0	0
E	0.063	0.075	0.069	0.002	128	0	0

Notes: Z score is your reported analytical result compared to the mean in terms of the standard deviation, calculated as (Result-Mean)/StdDev.
The parameter n is the number of results reported which are used to calculate the second iteration mean and standard deviation.

Florida Department of Law Enforcement

Alcohol Testing Program

BLOOD ALCOHOL PROFICIENCY INITIAL TEST OUTCOME REPORT

Proficiency Cycle 18C1

Receive Results By: 4/27/2018

Participation Number 15253

Method GC

Analyst Name Carswell, Katheryn

Your 18C1 proficiency test outcome is Satisfactory

Evaluation Procedure

First iteration: For each level, the qualified results reported by participating analysts and reference labs are pooled, the mean, standard deviation and acceptable range are calculated using truncation, and results outside the acceptable range are excluded from the second iteration.

Second iteration: The mean, standard deviation and acceptable range are recalculated using truncation, every analyst's qualified results are compared to the recalculated acceptable range, and every analyst is assigned an outcome for the proficiency cycle. All analysts with Results Outside Acceptable Range receive retest samples. The retest results are compared to the acceptable range established by the initial test and the retested analyst's outcome for the proficiency cycle is assigned based on the second comparison.

Type Test	Level ID	Vial Number	Results #1 Reported (g/dL)	#1 Z Score	Results #2 Reported (g/dL)	#2 Z Score
Initial	A	1103	0.120	1.0	0.118	0.3
Initial	C	1303	0.270	1.0	0.266	0.4

Proficiency Cycle Statistics

Level	Lower Limit	Upper Limit	Mean (Average)	Std Dev	N	Number Out of Range	
						1st Iter	2nd Iter
A	0.108	0.126	0.117	0.003	124	2	2
B	0.074	0.092	0.083	0.003	134	0	0
C	0.243	0.285	0.264	0.007	126	2	2
D	0.143	0.167	0.155	0.004	126	0	0
E	0.063	0.075	0.069	0.002	128	0	0

Notes: Z score is your reported analytical result compared to the mean in terms of the standard deviation, calculated as (Result-Mean)/StdDev.

The parameter n is the number of results reported which are used to calculate the second iteration mean and standard deviation.

Florida Department of Law Enforcement

Alcohol Testing Program

BLOOD ALCOHOL PROFICIENCY INITIAL TEST OUTCOME REPORT

Proficiency Cycle 18C1

Receive Results By: 4/27/2018

Participation Number 15117

Method GC

Analyst Name Catlin, Tara

Your 18C1 proficiency test outcome is Satisfactory

Evaluation Procedure

First iteration: For each level, the qualified results reported by participating analysts and reference labs are pooled, the mean, standard deviation and acceptable range are calculated using truncation, and results outside the acceptable range are excluded from the second iteration.

Second iteration: The mean, standard deviation and acceptable range are recalculated using truncation, every analyst's qualified results are compared to the recalculated acceptable range, and every analyst is assigned an outcome for the proficiency cycle. All analysts with Results Outside Acceptable Range receive retest samples. The retest results are compared to the acceptable range established by the initial test and the retested analyst's outcome for the proficiency cycle is assigned based on the second comparison.

Type Test	Level ID	Vial Number	Results #1 Reported (g/dL)	#1 Z Score	Results #2 Reported (g/dL)	#2 Z Score
Initial	A	1104	0.120	1.0	0.122	1.7
Initial	D	1405	0.162	1.8	0.160	1.3

Proficiency Cycle Statistics

Level	Lower Limit	Upper Limit	Mean (Average)	Std Dev	N	Number Out of Range	
						1st Iter	2nd Iter
A	0.108	0.126	0.117	0.003	124	2	2
B	0.074	0.092	0.083	0.003	134	0	0
C	0.243	0.285	0.264	0.007	126	2	2
D	0.143	0.167	0.155	0.004	126	0	0
E	0.063	0.075	0.069	0.002	128	0	0

Notes: Z score is your reported analytical result compared to the mean in terms of the standard deviation, calculated as (Result-Mean)/StdDev.
The parameter n is the number of results reported which are used to calculate the second iteration mean and standard deviation.

Florida Department of Law Enforcement

Alcohol Testing Program

BLOOD ALCOHOL PROFICIENCY INITIAL TEST OUTCOME REPORT

Proficiency Cycle 18C1

Receive Results By: 4/27/2018

Participation Number 15286

Method GC

Analyst Name Catlin, Tara

Your 18C1 proficiency test outcome is: **Satisfactory**

Evaluation Procedure

First iteration: For each level, the qualified results reported by participating analysts and reference labs are pooled, the mean, standard deviation and acceptable range are calculated using truncation, and results outside the acceptable range are excluded from the second iteration.

Second iteration: The mean, standard deviation and acceptable range are recalculated using truncation, every analyst's qualified results are compared to the recalculated acceptable range, and every analyst is assigned an outcome for the proficiency cycle. All analysts with Results Outside Acceptable Range receive retest samples. The retest results are compared to the acceptable range established by the initial test and the retested analyst's outcome for the proficiency cycle is assigned based on the second comparison.

Type Test	Level ID	Vial Number	Results #1 Reported (g/dL)	#1 Z Score	Results #2 Reported (g/dL)	#2 Z Score
Initial	A	1152	0.121	1.3	0.121	1.3
Initial	B	1254	0.085	0.7	0.086	1.0
Initial	C	1352	0.274	1.6	0.270	1.0
Initial	D	1451	0.161	1.5	0.160	1.3
Initial	E	1551	0.070	0.5	0.071	1.0

Proficiency Cycle Statistics

Level	Lower Limit	Upper Limit	Mean (Average)	Std Dev	N	Number Out of Range	
						1st Iter	2nd Iter
A	0.108	0.126	0.117	0.003	124	2	2
B	0.074	0.092	0.083	0.003	134	0	0
C	0.243	0.285	0.264	0.007	126	2	2
D	0.143	0.167	0.155	0.004	126	0	0
E	0.063	0.075	0.069	0.002	130	0	0

Notes: Z score is your reported analytical result compared to the mean in terms of the standard deviation, calculated as (Result-Mean)/StdDev.
The parameter n is the number of results reported which are used to calculate the second iteration mean and standard deviation.

Florida Department of Law Enforcement

Alcohol Testing Program

BLOOD ALCOHOL PROFICIENCY INITIAL TEST OUTCOME REPORT

Proficiency Cycle 18C1

Receive Results By: 4/27/2018

Participation Number 15014

Method GC

Analyst Name Chin, Jenna

Your 18C1 proficiency test outcome is Satisfactory

Evaluation Procedure

First iteration: For each level, the qualified results reported by participating analysts and reference labs are pooled, the mean, standard deviation and acceptable range are calculated using truncation, and results outside the acceptable range are excluded from the second iteration.

Second iteration: The mean, standard deviation and acceptable range are recalculated using truncation, every analyst's qualified results are compared to the recalculated acceptable range, and every analyst is assigned an outcome for the proficiency cycle. All analysts with Results Outside Acceptable Range receive retest samples. The retest results are compared to the acceptable range established by the initial test and the retested analyst's outcome for the proficiency cycle is assigned based on the second comparison.

Type Test	Level ID	Vial Number	Results #1 Reported (g/dL)	#1 Z Score	Results #2 Reported (g/dL)	#2 Z Score
Initial	B	1205	0.088	1.7	0.087	1.3
Initial	E	1503	0.072	1.5	0.074	2.5

Proficiency Cycle Statistics

Level	Lower Limit	Upper Limit	Mean (Average)	Std Dev	N	Number Out of Range	
						1st Iter	2nd Iter
A	0.108	0.126	0.117	0.003	124	2	2
B	0.074	0.092	0.083	0.003	134	0	0
C	0.243	0.285	0.264	0.007	126	2	2
D	0.143	0.167	0.155	0.004	126	0	0
E	0.063	0.075	0.069	0.002	128	0	0

Notes: Z score is your reported analytical result compared to the mean in terms of the standard deviation, calculated as (Result-Mean)/StdDev.
The parameter n is the number of results reported which are used to calculate the second iteration mean and standard deviation.

Florida Department of Law Enforcement

Alcohol Testing Program

BLOOD ALCOHOL PROFICIENCY INITIAL TEST OUTCOME REPORT

Proficiency Cycle 18C1

Receive Results By: 4/27/2018

Participation Number 15287

Method GC

Analyst Name Chin, Jenna

Your 18C1 proficiency test outcome is: **Satisfactory**

Evaluation Procedure

First iteration: For each level, the qualified results reported by participating analysts and reference labs are pooled, the mean, standard deviation and acceptable range are calculated using truncation, and results outside the acceptable range are excluded from the second iteration.

Second iteration: The mean, standard deviation and acceptable range are recalculated using truncation, every analyst's qualified results are compared to the recalculated acceptable range, and every analyst is assigned an outcome for the proficiency cycle. All analysts with Results Outside Acceptable Range receive retest samples. The retest results are compared to the acceptable range established by the initial test and the retested analyst's outcome for the proficiency cycle is assigned based on the second comparison.

Type Test	Level ID	Vial Number	Results #1 Reported (g/dL)	#1 Z Score	Results #2 Reported (g/dL)	#2 Z Score
Initial	A	1153	0.122	1.7	0.121	1.3
Initial	B	1255	0.088	1.7	0.087	1.3
Initial	C	1353	0.280	2.4	0.278	2.1
Initial	D	1452	0.164	2.3	0.165	2.5
Initial	E	1552	0.072	1.5	0.072	1.5

Proficiency Cycle Statistics

Level	Lower Limit	Upper Limit	Mean (Average)	Std Dev	N	Number Out of Range	
						1st Iter	2nd Iter
A	0.108	0.126	0.117	0.003	124	2	2
B	0.074	0.092	0.083	0.003	134	0	0
C	0.243	0.285	0.264	0.007	126	2	2
D	0.143	0.167	0.155	0.004	126	0	0
E	0.063	0.075	0.069	0.002	130	0	0

Notes: Z score is your reported analytical result compared to the mean in terms of the standard deviation, calculated as (Result-Mean)/StdDev.
The parameter n is the number of results reported which are used to calculate the second iteration mean and standard deviation.

Florida Department of Law Enforcement

Alcohol Testing Program

BLOOD ALCOHOL PROFICIENCY INITIAL TEST OUTCOME REPORT

Proficiency Cycle 18C1

Receive Results By: 4/27/2018

Participation Number 15276

Method GC

Analyst Name D'Orazio, Amanda

Your 18C1 proficiency test outcome is Satisfactory

Evaluation Procedure

First iteration: For each level, the qualified results reported by participating analysts and reference labs are pooled, the mean, standard deviation and acceptable range are calculated using truncation, and results outside the acceptable range are excluded from the second iteration.

Second iteration: The mean, standard deviation and acceptable range are recalculated using truncation, every analyst's qualified results are compared to the recalculated acceptable range, and every analyst is assigned an outcome for the proficiency cycle. All analysts with Results Outside Acceptable Range receive retest samples. The retest results are compared to the acceptable range established by the initial test and the retested analyst's outcome for the proficiency cycle is assigned based on the second comparison.

Type Test	Level ID	Vial Number	Results #1 Reported (g/dL)	#1 Z Score	Results #2 Reported (g/dL)	#2 Z Score
Initial	A	1105	0.117	0.0	0.115	-0.7
Initial	C	1304	0.263	0.0	0.262	-0.1

Proficiency Cycle Statistics

Level	Lower Limit	Upper Limit	Mean (Average)	Std Dev	N	Number Out of Range	
						1st Iter	2nd Iter
A	0.108	0.126	0.117	0.003	124	2	2
B	0.074	0.092	0.083	0.003	134	0	0
C	0.243	0.285	0.264	0.007	126	2	2
D	0.143	0.167	0.155	0.004	126	0	0
E	0.063	0.075	0.069	0.002	128	0	0

Notes: Z score is your reported analytical result compared to the mean in terms of the standard deviation, calculated as (Result-Mean)/StdDev.
The parameter n is the number of results reported which are used to calculate the second iteration mean and standard deviation.

Florida Department of Law Enforcement

Alcohol Testing Program

BLOOD ALCOHOL PROFICIENCY INITIAL TEST OUTCOME REPORT

Proficiency Cycle 18C1

Receive Results By: 4/27/2018

Participation Number 15239

Method GC

Analyst Name Finkelstein, Marissa

Your 18C1 proficiency test outcome is Satisfactory

Evaluation Procedure

First iteration: For each level, the qualified results reported by participating analysts and reference labs are pooled, the mean, standard deviation and acceptable range are calculated using truncation, and results outside the acceptable range are excluded from the second iteration.

Second iteration: The mean, standard deviation and acceptable range are recalculated using truncation, every analyst's qualified results are compared to the recalculated acceptable range, and every analyst is assigned an outcome for the proficiency cycle. All analysts with Results Outside Acceptable Range receive retest samples. The retest results are compared to the acceptable range established by the initial test and the retested analyst's outcome for the proficiency cycle is assigned based on the second comparison.

Type Test	Level ID	Vial Number	Results #1 Reported (g/dL)	#1 Z Score	Results #2 Reported (g/dL)	#2 Z Score
Initial	B	1206	0.081	-0.7	0.081	-0.7
Initial	D	1406	0.149	-1.5	0.149	-1.5

Proficiency Cycle Statistics

Level	Lower Limit	Upper Limit	Mean (Average)	Std Dev	N	Number Out of Range	
						1st Iter	2nd Iter
A	0.108	0.126	0.117	0.003	124	2	2
B	0.074	0.092	0.083	0.003	134	0	0
C	0.243	0.285	0.264	0.007	126	2	2
D	0.143	0.167	0.155	0.004	126	0	0
E	0.063	0.075	0.069	0.002	128	0	0

Notes: Z score is your reported analytical result compared to the mean in terms of the standard deviation, calculated as (Result-Mean)/StdDev.
The parameter n is the number of results reported which are used to calculate the second iteration mean and standard deviation.

Florida Department of Law Enforcement

Alcohol Testing Program

BLOOD ALCOHOL PROFICIENCY INITIAL TEST OUTCOME REPORT

Proficiency Cycle 18C1

Receive Results By: 4/27/2018

Participation Number 15141

Method GC

Analyst Name Gagen, Sara

Your 18C1 proficiency test outcome is Satisfactory

Evaluation Procedure

First iteration: For each level, the qualified results reported by participating analysts and reference labs are pooled, the mean, standard deviation and acceptable range are calculated using truncation, and results outside the acceptable range are excluded from the second iteration.

Second iteration: The mean, standard deviation and acceptable range are recalculated using truncation, every analyst's qualified results are compared to the recalculated acceptable range, and every analyst is assigned an outcome for the proficiency cycle. All analysts with Results Outside Acceptable Range receive retest samples. The retest results are compared to the acceptable range established by the initial test and the retested analyst's outcome for the proficiency cycle is assigned based on the second comparison.

Type Test	Level ID	Vial Number	Results #1 Reported (g/dL)	#1 Z Score	Results #2 Reported (g/dL)	#2 Z Score
Initial	A	1106	0.117	0.0	0.114	-1.0
Initial	B	1207	0.083	0.0	0.083	0.0

Proficiency Cycle Statistics

Level	Lower Limit	Upper Limit	Mean (Average)	Std Dev	N	Number Out of Range	
						1st Iter	2nd Iter
A	0.108	0.126	0.117	0.003	124	2	2
B	0.074	0.092	0.083	0.003	134	0	0
C	0.243	0.285	0.264	0.007	126	2	2
D	0.143	0.167	0.155	0.004	126	0	0
E	0.063	0.075	0.069	0.002	128	0	0

Notes: Z score is your reported analytical result compared to the mean in terms of the standard deviation, calculated as (Result-Mean)/StdDev.
The parameter n is the number of results reported which are used to calculate the second iteration mean and standard deviation.

Florida Department of Law Enforcement

Alcohol Testing Program

BLOOD ALCOHOL PROFICIENCY INITIAL TEST OUTCOME REPORT

Proficiency Cycle 18C1

Receive Results By: 4/27/2018

Participation Number 15240

Method GC

Analyst Name Giachetti, Alexander

Your 18C1 proficiency test outcome is Satisfactory

Evaluation Procedure

First iteration: For each level, the qualified results reported by participating analysts and reference labs are pooled, the mean, standard deviation and acceptable range are calculated using truncation, and results outside the acceptable range are excluded from the second iteration.

Second iteration: The mean, standard deviation and acceptable range are recalculated using truncation, every analyst's qualified results are compared to the recalculated acceptable range, and every analyst is assigned an outcome for the proficiency cycle. All analysts with Results Outside Acceptable Range receive retest samples. The retest results are compared to the acceptable range established by the initial test and the retested analyst's outcome for the proficiency cycle is assigned based on the second comparison.

Type Test	Level ID	Vial Number	Results #1 Reported (g/dL)	#1 Z Score	Results #2 Reported (g/dL)	#2 Z Score
Initial	A	1107	0.112	-1.7	0.112	-1.7
Initial	B	1208	0.080	-1.0	0.080	-1.0

Proficiency Cycle Statistics

Level	Lower Limit	Upper Limit	Mean (Average)	Std Dev	N	Number Out of Range	
						1st Iter	2nd Iter
A	0.108	0.126	0.117	0.003	124	2	2
B	0.074	0.092	0.083	0.003	134	0	0
C	0.243	0.285	0.264	0.007	126	2	2
D	0.143	0.167	0.155	0.004	126	0	0
E	0.063	0.075	0.069	0.002	128	0	0

Notes: Z score is your reported analytical result compared to the mean in terms of the standard deviation, calculated as $(\text{Result} - \text{Mean}) / \text{StdDev}$.
The parameter n is the number of results reported which are used to calculate the second iteration mean and standard deviation.

Florida Department of Law Enforcement

Alcohol Testing Program

BLOOD ALCOHOL PROFICIENCY INITIAL TEST OUTCOME REPORT

Proficiency Cycle 18C1

Receive Results By: 4/27/2018

Participation Number 15277

Method GC

Analyst Name Gilton, Kelsey

Your 18C1 proficiency test outcome is: **Satisfactory**

Evaluation Procedure

First iteration: For each level, the qualified results reported by participating analysts and reference labs are pooled, the mean, standard deviation and acceptable range are calculated using truncation, and results outside the acceptable range are excluded from the second iteration.

Second iteration: The mean, standard deviation and acceptable range are recalculated using truncation, every analyst's qualified results are compared to the recalculated acceptable range, and every analyst is assigned an outcome for the proficiency cycle. All analysts with Results Outside Acceptable Range receive retest samples. The retest results are compared to the acceptable range established by the initial test and the retested analyst's outcome for the proficiency cycle is assigned based on the second comparison.

Type Test	Level ID	Vial Number	Results #1 Reported (g/dL)	#1 Z Score	Results #2 Reported (g/dL)	#2 Z Score
Initial	A	1155	0.124	2.3	0.122	1.7
Initial	B	1257	0.088	1.7	0.085	0.7
Initial	C	1355	0.275	1.7	0.275	1.7
Initial	D	1454	0.163	2.0	0.164	2.3
Initial	E	1554	0.072	1.5	0.072	1.5

Proficiency Cycle Statistics

Level	Lower Limit	Upper Limit	Mean (Average)	Std Dev	N	Number Out of Range	
						1st Iter	2nd Iter
A	0.108	0.126	0.117	0.003	124	2	2
B	0.074	0.092	0.083	0.003	134	0	0
C	0.243	0.285	0.264	0.007	126	2	2
D	0.143	0.167	0.155	0.004	126	0	0
E	0.063	0.075	0.069	0.002	130	0	0

Notes: Z score is your reported analytical result compared to the mean in terms of the standard deviation, calculated as (Result-Mean)/StdDev.
The parameter n is the number of results reported which are used to calculate the second iteration mean and standard deviation.

Florida Department of Law Enforcement

Alcohol Testing Program

BLOOD ALCOHOL PROFICIENCY INITIAL TEST OUTCOME REPORT

Proficiency Cycle 18C1

Receive Results By: 4/27/2018

Participation Number 15194

Method GC

Analyst Name Gonyea, Jennifer

Your 18C1 proficiency test outcome is Satisfactory

Evaluation Procedure

First iteration: For each level, the qualified results reported by participating analysts and reference labs are pooled, the mean, standard deviation and acceptable range are calculated using truncation, and results outside the acceptable range are excluded from the second iteration.

Second iteration: The mean, standard deviation and acceptable range are recalculated using truncation, every analyst's qualified results are compared to the recalculated acceptable range, and every analyst is assigned an outcome for the proficiency cycle. All analysts with Results Outside Acceptable Range receive retest samples. The retest results are compared to the acceptable range established by the initial test and the retested analyst's outcome for the proficiency cycle is assigned based on the second comparison.

Type Test	Level ID	Vial Number	Results #1 Reported (g/dL)	#1 Z Score	Results #2 Reported (g/dL)	#2 Z Score
Initial	B	1209	0.081	-0.7	0.081	-0.7
Initial	D	1407	0.149	-1.5	0.149	-1.5

Proficiency Cycle Statistics

Level	Lower Limit	Upper Limit	Mean (Average)	Std Dev	N	Number Out of Range	
						1st Iter	2nd Iter
A	0.108	0.126	0.117	0.003	124	2	2
B	0.074	0.092	0.083	0.003	134	0	0
C	0.243	0.285	0.264	0.007	126	2	2
D	0.143	0.167	0.155	0.004	126	0	0
E	0.063	0.075	0.069	0.002	128	0	0

Notes: Z score is your reported analytical result compared to the mean in terms of the standard deviation, calculated as (Result-Mean)/StdDev.
The parameter n is the number of results reported which are used to calculate the second iteration mean and standard deviation.

Florida Department of Law Enforcement

Alcohol Testing Program

BLOOD ALCOHOL PROFICIENCY INITIAL TEST OUTCOME REPORT

Proficiency Cycle 18C1

Receive Results By: 4/27/2018

Participation Number 15241

Method GC

Analyst Name Gottal, Josephine

Your 18C1 proficiency test outcome is Satisfactory

Evaluation Procedure

First iteration: For each level, the qualified results reported by participating analysts and reference labs are pooled, the mean, standard deviation and acceptable range are calculated using truncation, and results outside the acceptable range are excluded from the second iteration.

Second iteration: The mean, standard deviation and acceptable range are recalculated using truncation, every analyst's qualified results are compared to the recalculated acceptable range, and every analyst is assigned an outcome for the proficiency cycle. All analysts with Results Outside Acceptable Range receive retest samples. The retest results are compared to the acceptable range established by the initial test and the retested analyst's outcome for the proficiency cycle is assigned based on the second comparison.

Type Test	Level ID	Vial Number	Results #1 Reported (g/dL)	#1 Z Score	Results #2 Reported (g/dL)	#2 Z Score
Initial	B	1210	0.084	0.3	0.084	0.3
Initial	D	1408	0.155	0.0	0.157	0.5

Proficiency Cycle Statistics

Level	Lower Limit	Upper Limit	Mean (Average)	Std Dev	N	Number Out of Range	
						1st Iter	2nd Iter
A	0.108	0.126	0.117	0.003	124	2	2
B	0.074	0.092	0.083	0.003	134	0	0
C	0.243	0.285	0.264	0.007	126	2	2
D	0.143	0.167	0.155	0.004	126	0	0
E	0.063	0.075	0.069	0.002	128	0	0

Notes: Z score is your reported analytical result compared to the mean in terms of the standard deviation, calculated as (Result-Mean)/StdDev.
The parameter n is the number of results reported which are used to calculate the second iteration mean and standard deviation.

Florida Department of Law Enforcement

Alcohol Testing Program

BLOOD ALCOHOL PROFICIENCY INITIAL TEST OUTCOME REPORT

Proficiency Cycle 18C1

Receive Results By: 4/27/2018

Participation Number 15022

Method GC

Analyst Name Hays, Jeffrey

Your 18C1 proficiency test outcome is Satisfactory

Evaluation Procedure

First iteration: For each level, the qualified results reported by participating analysts and reference labs are pooled, the mean, standard deviation and acceptable range are calculated using truncation, and results outside the acceptable range are excluded from the second iteration.

Second iteration: The mean, standard deviation and acceptable range are recalculated using truncation, every analyst's qualified results are compared to the recalculated acceptable range, and every analyst is assigned an outcome for the proficiency cycle. All analysts with Results Outside Acceptable Range receive retest samples. The retest results are compared to the acceptable range established by the initial test and the retested analyst's outcome for the proficiency cycle is assigned based on the second comparison.

Type Test	Level ID	Vial Number	Results #1 Reported (g/dL)	#1 Z Score	Results #2 Reported (g/dL)	#2 Z Score
Initial	D	1409	0.161	1.5	0.163	2.0
Initial	E	1504	0.072	1.5	0.073	2.0

Proficiency Cycle Statistics

Level	Lower Limit	Upper Limit	Mean (Average)	Std Dev	N	Number Out of Range	
						1st Iter	2nd Iter
A	0.108	0.126	0.117	0.003	124	2	2
B	0.074	0.092	0.083	0.003	134	0	0
C	0.243	0.285	0.264	0.007	126	2	2
D	0.143	0.167	0.155	0.004	126	0	0
E	0.063	0.075	0.069	0.002	128	0	0

Notes: Z score is your reported analytical result compared to the mean in terms of the standard deviation, calculated as (Result-Mean)/StdDev.
The parameter n is the number of results reported which are used to calculate the second iteration mean and standard deviation.

Florida Department of Law Enforcement

Alcohol Testing Program

BLOOD ALCOHOL PROFICIENCY INITIAL TEST OUTCOME REPORT

Proficiency Cycle 18C1

Receive Results By: 4/27/2018

Participation Number 15302

Method GC

Analyst Name Hays, Jeffrey

Your 18C1 proficiency test outcome is: **Satisfactory**

Evaluation Procedure

First iteration: For each level, the qualified results reported by participating analysts and reference labs are pooled, the mean, standard deviation and acceptable range are calculated using truncation, and results outside the acceptable range are excluded from the second iteration.

Second iteration: The mean, standard deviation and acceptable range are recalculated using truncation, every analyst's qualified results are compared to the recalculated acceptable range, and every analyst is assigned an outcome for the proficiency cycle. All analysts with Results Outside Acceptable Range receive retest samples. The retest results are compared to the acceptable range established by the initial test and the retested analyst's outcome for the proficiency cycle is assigned based on the second comparison.

Type Test	Level ID	Vial Number	Results #1 Reported (g/dL)	#1 Z Score	Results #2 Reported (g/dL)	#2 Z Score
Initial	A	1168	0.119	0.7	0.119	0.7
Initial	B	1270	0.086	1.0	0.085	0.7
Initial	C	1368	0.268	0.7	0.267	0.6
Initial	D	1467	0.160	1.3	0.160	1.3
Initial	E	1567	0.072	1.5	0.072	1.5

Proficiency Cycle Statistics

Level	Lower Limit	Upper Limit	Mean (Average)	Std Dev	N	Number Out of Range	
						1st Iter	2nd Iter
A	0.108	0.126	0.117	0.003	124	2	2
B	0.074	0.092	0.083	0.003	134	0	0
C	0.243	0.285	0.264	0.007	126	2	2
D	0.143	0.167	0.155	0.004	126	0	0
E	0.063	0.075	0.069	0.002	130	0	0

Notes: Z score is your reported analytical result compared to the mean in terms of the standard deviation, calculated as (Result-Mean)/StdDev.
The parameter n is the number of results reported which are used to calculate the second iteration mean and standard deviation.

Florida Department of Law Enforcement

Alcohol Testing Program

BLOOD ALCOHOL PROFICIENCY INITIAL TEST OUTCOME REPORT

Proficiency Cycle 18C1

Receive Results By: 4/27/2018

Participation Number 15039

Method GC

Analyst Name Hime, George

Your 18C1 proficiency test outcome is Satisfactory

Evaluation Procedure

First iteration: For each level, the qualified results reported by participating analysts and reference labs are pooled, the mean, standard deviation and acceptable range are calculated using truncation, and results outside the acceptable range are excluded from the second iteration.

Second iteration: The mean, standard deviation and acceptable range are recalculated using truncation, every analyst's qualified results are compared to the recalculated acceptable range, and every analyst is assigned an outcome for the proficiency cycle. All analysts with Results Outside Acceptable Range receive retest samples. The retest results are compared to the acceptable range established by the initial test and the retested analyst's outcome for the proficiency cycle is assigned based on the second comparison.

Type Test	Level ID	Vial Number	Results #1 Reported (g/dL)	#1 Z Score	Results #2 Reported (g/dL)	#2 Z Score
Initial	A	1108	0.113	-1.3	0.113	-1.3
Initial	E	1505	0.067	-1.0	0.066	-1.5

Proficiency Cycle Statistics

Level	Lower Limit	Upper Limit	Mean (Average)	Std Dev	N	Number Out of Range	
						1st Iter	2nd Iter
A	0.108	0.126	0.117	0.003	124	2	2
B	0.074	0.092	0.083	0.003	134	0	0
C	0.243	0.285	0.264	0.007	126	2	2
D	0.143	0.167	0.155	0.004	126	0	0
E	0.063	0.075	0.069	0.002	128	0	0

Notes: Z score is your reported analytical result compared to the mean in terms of the standard deviation, calculated as (Result-Mean)/StdDev.

The parameter n is the number of results reported which are used to calculate the second iteration mean and standard deviation.

Florida Department of Law Enforcement

Alcohol Testing Program

BLOOD ALCOHOL PROFICIENCY INITIAL TEST OUTCOME REPORT

Proficiency Cycle 18C1

Receive Results By: 4/27/2018

Participation Number 15208

Method GC

Analyst Name Huene (HS108), Lauren

Your 18C1 proficiency test outcome is Satisfactory

Evaluation Procedure

First iteration: For each level, the qualified results reported by participating analysts and reference labs are pooled, the mean, standard deviation and acceptable range are calculated using truncation, and results outside the acceptable range are excluded from the second iteration.

Second iteration: The mean, standard deviation and acceptable range are recalculated using truncation, every analyst's qualified results are compared to the recalculated acceptable range, and every analyst is assigned an outcome for the proficiency cycle. All analysts with Results Outside Acceptable Range receive retest samples. The retest results are compared to the acceptable range established by the initial test and the retested analyst's outcome for the proficiency cycle is assigned based on the second comparison.

Type Test	Level ID	Vial Number	Results #1 Reported (g/dL)	#1 Z Score	Results #2 Reported (g/dL)	#2 Z Score
Initial	A	1181	0.118	0.3	0.117	0.0
Initial	E	1506	0.070	0.5	0.069	0.0

Proficiency Cycle Statistics

Level	Lower Limit	Upper Limit	Mean (Average)	Std Dev	N	Number Out of Range	
						1st Iter	2nd Iter
A	0.108	0.126	0.117	0.003	124	2	2
B	0.074	0.092	0.083	0.003	134	0	0
C	0.243	0.285	0.264	0.007	126	2	2
D	0.143	0.167	0.155	0.004	126	0	0
E	0.063	0.075	0.069	0.002	128	0	0

Notes: Z score is your reported analytical result compared to the mean in terms of the standard deviation, calculated as (Result-Mean)/StdDev.
The parameter n is the number of results reported which are used to calculate the second iteration mean and standard deviation.

Florida Department of Law Enforcement

Alcohol Testing Program

BLOOD ALCOHOL PROFICIENCY INITIAL TEST OUTCOME REPORT

Proficiency Cycle 18C1

Receive Results By: 4/27/2018

Participation Number 15191

Method GC

Analyst Name Huene (HS110), Lauren

Your 18C1 proficiency test outcome is Satisfactory

Evaluation Procedure

First iteration: For each level, the qualified results reported by participating analysts and reference labs are pooled, the mean, standard deviation and acceptable range are calculated using truncation, and results outside the acceptable range are excluded from the second iteration.

Second iteration: The mean, standard deviation and acceptable range are recalculated using truncation, every analyst's qualified results are compared to the recalculated acceptable range, and every analyst is assigned an outcome for the proficiency cycle. All analysts with Results Outside Acceptable Range receive retest samples. The retest results are compared to the acceptable range established by the initial test and the retested analyst's outcome for the proficiency cycle is assigned based on the second comparison.

Type Test	Level ID	Vial Number	Results #1 Reported (g/dL)	#1 Z Score	Results #2 Reported (g/dL)	#2 Z Score
Initial	B	1211	0.083	0.0	0.083	0.0
Initial	C	1305	0.264	0.1	0.264	0.1

Proficiency Cycle Statistics

Level	Lower Limit	Upper Limit	Mean (Average)	Std Dev	N	Number Out of Range	
						1st Iter	2nd Iter
A	0.108	0.126	0.117	0.003	124	2	2
B	0.074	0.092	0.083	0.003	134	0	0
C	0.243	0.285	0.264	0.007	126	2	2
D	0.143	0.167	0.155	0.004	126	0	0
E	0.063	0.075	0.069	0.002	128	0	0

Notes: Z score is your reported analytical result compared to the mean in terms of the standard deviation, calculated as (Result-Mean)/StdDev.
The parameter n is the number of results reported which are used to calculate the second iteration mean and standard deviation.

Florida Department of Law Enforcement

Alcohol Testing Program

BLOOD ALCOHOL PROFICIENCY INITIAL TEST OUTCOME REPORT

Proficiency Cycle 18C1

Receive Results By: 4/27/2018

Participation Number 15202

Method GC

Analyst Name Humphrey, Susan

Your 18C1 proficiency test outcome is Satisfactory

Evaluation Procedure

First iteration: For each level, the qualified results reported by participating analysts and reference labs are pooled, the mean, standard deviation and acceptable range are calculated using truncation, and results outside the acceptable range are excluded from the second iteration.

Second iteration: The mean, standard deviation and acceptable range are recalculated using truncation, every analyst's qualified results are compared to the recalculated acceptable range, and every analyst is assigned an outcome for the proficiency cycle. All analysts with Results Outside Acceptable Range receive retest samples. The retest results are compared to the acceptable range established by the initial test and the retested analyst's outcome for the proficiency cycle is assigned based on the second comparison.

Type Test	Level ID	Vial Number	Results #1 Reported (g/dL)	#1 Z Score	Results #2 Reported (g/dL)	#2 Z Score
Initial	C	1306	0.252	-1.6	0.252	-1.6
Initial	E	1507	0.066	-1.5	0.066	-1.5

Proficiency Cycle Statistics

Level	Lower Limit	Upper Limit	Mean (Average)	Std Dev	N	Number Out of Range	
						1st Iter	2nd Iter
A	0.108	0.126	0.117	0.003	124	2	2
B	0.074	0.092	0.083	0.003	134	0	0
C	0.243	0.285	0.264	0.007	126	2	2
D	0.143	0.167	0.155	0.004	126	0	0
E	0.063	0.075	0.069	0.002	128	0	0

Notes: Z score is your reported analytical result compared to the mean in terms of the standard deviation, calculated as (Result-Mean)/StdDev.
The parameter n is the number of results reported which are used to calculate the second iteration mean and standard deviation.

Florida Department of Law Enforcement

Alcohol Testing Program

BLOOD ALCOHOL PROFICIENCY INITIAL TEST OUTCOME REPORT

Proficiency Cycle 18C1

Receive Results By: 4/27/2018

Participation Number 12129

Method GC

Analyst Name Jacobs, Monica

Your 18C1 proficiency test outcome is Satisfactory

Evaluation Procedure

First iteration: For each level, the qualified results reported by participating analysts and reference labs are pooled, the mean, standard deviation and acceptable range are calculated using truncation, and results outside the acceptable range are excluded from the second iteration.

Second iteration: The mean, standard deviation and acceptable range are recalculated using truncation, every analyst's qualified results are compared to the recalculated acceptable range, and every analyst is assigned an outcome for the proficiency cycle. All analysts with Results Outside Acceptable Range receive retest samples. The retest results are compared to the acceptable range established by the initial test and the retested analyst's outcome for the proficiency cycle is assigned based on the second comparison.

Type Test	Level ID	Vial Number	Results #1 Reported (g/dL)	#1 Z Score	Results #2 Reported (g/dL)	#2 Z Score
Initial	B	1212	0.085	0.7	0.085	0.7
Initial	D	1410	0.150	-1.3	0.155	0.0

Proficiency Cycle Statistics

Level	Lower Limit	Upper Limit	Mean (Average)	Std Dev	N	Number Out of Range	
						1st Iter	2nd Iter
A	0.108	0.126	0.117	0.003	124	2	2
B	0.074	0.092	0.083	0.003	134	0	0
C	0.243	0.285	0.264	0.007	126	2	2
D	0.143	0.167	0.155	0.004	126	0	0
E	0.063	0.075	0.069	0.002	128	0	0

Notes: Z score is your reported analytical result compared to the mean in terms of the standard deviation, calculated as (Result-Mean)/StdDev.
The parameter n is the number of results reported which are used to calculate the second iteration mean and standard deviation.

Florida Department of Law Enforcement

Alcohol Testing Program

BLOOD ALCOHOL PROFICIENCY INITIAL TEST OUTCOME REPORT

Proficiency Cycle 18C1

Receive Results By: 4/27/2018

Participation Number 15298

Method GC

Analyst Name Jacobs, Monica

Your 18C1 proficiency test outcome is: **Satisfactory**

Evaluation Procedure

First iteration: For each level, the qualified results reported by participating analysts and reference labs are pooled, the mean, standard deviation and acceptable range are calculated using truncation, and results outside the acceptable range are excluded from the second iteration.

Second iteration: The mean, standard deviation and acceptable range are recalculated using truncation, every analyst's qualified results are compared to the recalculated acceptable range, and every analyst is assigned an outcome for the proficiency cycle. All analysts with Results Outside Acceptable Range receive retest samples. The retest results are compared to the acceptable range established by the initial test and the retested analyst's outcome for the proficiency cycle is assigned based on the second comparison.

Type Test	Level ID	Vial Number	Results #1 Reported (g/dL)	#1 Z Score	Results #2 Reported (g/dL)	#2 Z Score
Initial	A	1167	0.117	0.0	0.116	-0.3
Initial	B	1269	0.083	0.0	0.082	-0.3
Initial	C	1367	0.268	0.7	0.263	0.0
Initial	D	1466	0.155	0.0	0.153	-0.5
Initial	E	1566	0.069	0.0	0.069	0.0

Proficiency Cycle Statistics

Level	Lower Limit	Upper Limit	Mean (Average)	Std Dev	N	Number Out of Range	
						1st Iter	2nd Iter
A	0.108	0.126	0.117	0.003	124	2	2
B	0.074	0.092	0.083	0.003	134	0	0
C	0.243	0.285	0.264	0.007	126	2	2
D	0.143	0.167	0.155	0.004	126	0	0
E	0.063	0.075	0.069	0.002	130	0	0

Notes: Z score is your reported analytical result compared to the mean in terms of the standard deviation, calculated as (Result-Mean)/StdDev.
The parameter n is the number of results reported which are used to calculate the second iteration mean and standard deviation.

Florida Department of Law Enforcement

Alcohol Testing Program

BLOOD ALCOHOL PROFICIENCY INITIAL TEST OUTCOME REPORT

Proficiency Cycle 18C1

Receive Results By: 4/27/2018

Participation Number 15176

Method GC

Analyst Name Jean, Wilsa

Your 18C1 proficiency test outcome is Satisfactory

Evaluation Procedure

First iteration: For each level, the qualified results reported by participating analysts and reference labs are pooled, the mean, standard deviation and acceptable range are calculated using truncation, and results outside the acceptable range are excluded from the second iteration.

Second iteration: The mean, standard deviation and acceptable range are recalculated using truncation, every analyst's qualified results are compared to the recalculated acceptable range, and every analyst is assigned an outcome for the proficiency cycle. All analysts with Results Outside Acceptable Range receive retest samples. The retest results are compared to the acceptable range established by the initial test and the retested analyst's outcome for the proficiency cycle is assigned based on the second comparison.

Type Test	Level ID	Vial Number	Results #1 Reported (g/dL)	#1 Z Score	Results #2 Reported (g/dL)	#2 Z Score
Initial	C	1307	0.252	-1.6	0.252	-1.6
Initial	E	1508	0.066	-1.5	0.066	-1.5

Proficiency Cycle Statistics

Level	Lower Limit	Upper Limit	Mean (Average)	Std Dev	N	Number Out of Range	
						1st Iter	2nd Iter
A	0.108	0.126	0.117	0.003	124	2	2
B	0.074	0.092	0.083	0.003	134	0	0
C	0.243	0.285	0.264	0.007	126	2	2
D	0.143	0.167	0.155	0.004	126	0	0
E	0.063	0.075	0.069	0.002	128	0	0

Notes: Z score is your reported analytical result compared to the mean in terms of the standard deviation, calculated as $(\text{Result} - \text{Mean}) / \text{StdDev}$.
The parameter n is the number of results reported which are used to calculate the second iteration mean and standard deviation.

Florida Department of Law Enforcement

Alcohol Testing Program

BLOOD ALCOHOL PROFICIENCY INITIAL TEST OUTCOME REPORT

Proficiency Cycle 18C1

Receive Results By: 4/27/2018

Participation Number 15149

Method GC

Analyst Name Kahl, Joseph

Your 18C1 proficiency test outcome is Satisfactory

Evaluation Procedure

First iteration: For each level, the qualified results reported by participating analysts and reference labs are pooled, the mean, standard deviation and acceptable range are calculated using truncation, and results outside the acceptable range are excluded from the second iteration.

Second iteration: The mean, standard deviation and acceptable range are recalculated using truncation, every analyst's qualified results are compared to the recalculated acceptable range, and every analyst is assigned an outcome for the proficiency cycle. All analysts with Results Outside Acceptable Range receive retest samples. The retest results are compared to the acceptable range established by the initial test and the retested analyst's outcome for the proficiency cycle is assigned based on the second comparison.

Type Test	Level ID	Vial Number	Results #1 Reported (g/dL)	#1 Z Score	Results #2 Reported (g/dL)	#2 Z Score
Initial	D	1411	0.149	-1.5	0.149	-1.5
Initial	E	1509	0.066	-1.5	0.066	-1.5

Proficiency Cycle Statistics

Level	Lower Limit	Upper Limit	Mean (Average)	Std Dev	N	Number Out of Range	
						1st Iter	2nd Iter
A	0.108	0.126	0.117	0.003	124	2	2
B	0.074	0.092	0.083	0.003	134	0	0
C	0.243	0.285	0.264	0.007	126	2	2
D	0.143	0.167	0.155	0.004	126	0	0
E	0.063	0.075	0.069	0.002	128	0	0

Notes: Z score is your reported analytical result compared to the mean in terms of the standard deviation, calculated as (Result-Mean)/StdDev.
The parameter n is the number of results reported which are used to calculate the second iteration mean and standard deviation.

Florida Department of Law Enforcement

Alcohol Testing Program

BLOOD ALCOHOL PROFICIENCY INITIAL TEST OUTCOME REPORT

Proficiency Cycle 18C1

Receive Results By: 4/27/2018

Participation Number 15297

Method GC

Analyst Name Kahl, Kristin

Your 18C1 proficiency test outcome is: **Satisfactory**

Evaluation Procedure

First iteration: For each level, the qualified results reported by participating analysts and reference labs are pooled, the mean, standard deviation and acceptable range are calculated using truncation, and results outside the acceptable range are excluded from the second iteration.

Second iteration: The mean, standard deviation and acceptable range are recalculated using truncation, every analyst's qualified results are compared to the recalculated acceptable range, and every analyst is assigned an outcome for the proficiency cycle. All analysts with Results Outside Acceptable Range receive retest samples. The retest results are compared to the acceptable range established by the initial test and the retested analyst's outcome for the proficiency cycle is assigned based on the second comparison.

Type Test	Level ID	Vial Number	Results #1 Reported (g/dL)	#1 Z Score	Results #2 Reported (g/dL)	#2 Z Score
Initial	A	1166	0.115	-0.7	0.114	-1.0
Initial	B	1268	0.082	-0.3	0.081	-0.7
Initial	C	1366	0.261	-0.3	0.261	-0.3
Initial	D	1465	0.153	-0.5	0.153	-0.5
Initial	E	1565	0.069	0.0	0.068	-0.5

Proficiency Cycle Statistics

Level	Lower Limit	Upper Limit	Mean (Average)	Std Dev	N	Number Out of Range	
						1st Iter	2nd Iter
A	0.108	0.126	0.117	0.003	124	2	2
B	0.074	0.092	0.083	0.003	134	0	0
C	0.243	0.285	0.264	0.007	126	2	2
D	0.143	0.167	0.155	0.004	126	0	0
E	0.063	0.075	0.069	0.002	130	0	0

Notes: Z score is your reported analytical result compared to the mean in terms of the standard deviation, calculated as (Result-Mean)/StdDev.
The parameter n is the number of results reported which are used to calculate the second iteration mean and standard deviation.

Florida Department of Law Enforcement

Alcohol Testing Program

BLOOD ALCOHOL PROFICIENCY INITIAL TEST OUTCOME REPORT

Proficiency Cycle 18C1

Receive Results By: 4/27/2018

Participation Number 15279

Method GC

Analyst Name Kahl, Kristin

Your 18C1 proficiency test outcome is: **Satisfactory**

Evaluation Procedure

First iteration: For each level, the qualified results reported by participating analysts and reference labs are pooled, the mean, standard deviation and acceptable range are calculated using truncation, and results outside the acceptable range are excluded from the second iteration.

Second iteration: The mean, standard deviation and acceptable range are recalculated using truncation, every analyst's qualified results are compared to the recalculated acceptable range, and every analyst is assigned an outcome for the proficiency cycle. All analysts with Results Outside Acceptable Range receive retest samples. The retest results are compared to the acceptable range established by the initial test and the retested analyst's outcome for the proficiency cycle is assigned based on the second comparison.

Type Test	Level ID	Vial Number	Results #1 Reported (g/dL)	#1 Z Score	Results #2 Reported (g/dL)	#2 Z Score
Initial	A	1165	0.114	-1.0	0.114	-1.0
Initial	B	1267	0.081	-0.7	0.081	-0.7
Initial	C	1365	0.261	-0.3	0.261	-0.3
Initial	D	1464	0.152	-0.8	0.152	-0.8
Initial	E	1564	0.067	-1.0	0.067	-1.0

Proficiency Cycle Statistics

Level	Lower Limit	Upper Limit	Mean (Average)	Std Dev	N	Number Out of Range	
						1st Iter	2nd Iter
A	0.108	0.126	0.117	0.003	124	2	2
B	0.074	0.092	0.083	0.003	134	0	0
C	0.243	0.285	0.264	0.007	126	2	2
D	0.143	0.167	0.155	0.004	126	0	0
E	0.063	0.075	0.069	0.002	130	0	0

Notes: Z score is your reported analytical result compared to the mean in terms of the standard deviation, calculated as (Result-Mean)/StdDev.
The parameter n is the number of results reported which are used to calculate the second iteration mean and standard deviation.

Florida Department of Law Enforcement

Alcohol Testing Program

BLOOD ALCOHOL PROFICIENCY INITIAL TEST OUTCOME REPORT

Proficiency Cycle 18C1

Receive Results By: 4/27/2018

Participation Number 15270

Method GC

Analyst Name Kamandulis, Linet

Your 18C1 proficiency test outcome is Satisfactory

Evaluation Procedure

First iteration: For each level, the qualified results reported by participating analysts and reference labs are pooled, the mean, standard deviation and acceptable range are calculated using truncation, and results outside the acceptable range are excluded from the second iteration.

Second iteration: The mean, standard deviation and acceptable range are recalculated using truncation, every analyst's qualified results are compared to the recalculated acceptable range, and every analyst is assigned an outcome for the proficiency cycle. All analysts with Results Outside Acceptable Range receive retest samples. The retest results are compared to the acceptable range established by the initial test and the retested analyst's outcome for the proficiency cycle is assigned based on the second comparison.

Type Test	Level ID	Vial Number	Results #1 Reported (g/dL)	#1 Z Score	Results #2 Reported (g/dL)	#2 Z Score
Initial	A	1110	0.117	0.0	0.118	0.3
Initial	E	1510	0.069	0.0	0.069	0.0

Proficiency Cycle Statistics

Level	Lower Limit	Upper Limit	Mean (Average)	Std Dev	N	Number Out of Range	
						1st Iter	2nd Iter
A	0.108	0.126	0.117	0.003	124	2	2
B	0.074	0.092	0.083	0.003	134	0	0
C	0.243	0.285	0.264	0.007	126	2	2
D	0.143	0.167	0.155	0.004	126	0	0
E	0.063	0.075	0.069	0.002	128	0	0

Notes: Z score is your reported analytical result compared to the mean in terms of the standard deviation, calculated as (Result-Mean)/StdDev.
The parameter n is the number of results reported which are used to calculate the second iteration mean and standard deviation.

Florida Department of Law Enforcement

Alcohol Testing Program

BLOOD ALCOHOL PROFICIENCY INITIAL TEST OUTCOME REPORT

Proficiency Cycle 18C1

Receive Results By: 4/27/2018

Participation Number 15197

Method GC

Analyst Name Kamandulis (AA-4), Linet

Your 18C1 proficiency test outcome is Satisfactory

Evaluation Procedure

First iteration: For each level, the qualified results reported by participating analysts and reference labs are pooled, the mean, standard deviation and acceptable range are calculated using truncation, and results outside the acceptable range are excluded from the second iteration.

Second iteration: The mean, standard deviation and acceptable range are recalculated using truncation, every analyst's qualified results are compared to the recalculated acceptable range, and every analyst is assigned an outcome for the proficiency cycle. All analysts with Results Outside Acceptable Range receive retest samples. The retest results are compared to the acceptable range established by the initial test and the retested analyst's outcome for the proficiency cycle is assigned based on the second comparison.

Type Test	Level ID	Vial Number	Results #1 Reported (g/dL)	#1 Z Score	Results #2 Reported (g/dL)	#2 Z Score
Initial	B	1281	0.082	-0.3	0.084	0.3
Initial	C	1308	0.265	0.3	0.269	0.9

Proficiency Cycle Statistics

Level	Lower Limit	Upper Limit	Mean (Average)	Std Dev	N	Number Out of Range	
						1st Iter	2nd Iter
A	0.108	0.126	0.117	0.003	124	2	2
B	0.074	0.092	0.083	0.003	134	0	0
C	0.243	0.285	0.264	0.007	126	2	2
D	0.143	0.167	0.155	0.004	126	0	0
E	0.063	0.075	0.069	0.002	128	0	0

Notes: Z score is your reported analytical result compared to the mean in terms of the standard deviation, calculated as (Result-Mean)/StdDev.
The parameter n is the number of results reported which are used to calculate the second iteration mean and standard deviation.

Florida Department of Law Enforcement

Alcohol Testing Program

BLOOD ALCOHOL PROFICIENCY INITIAL TEST OUTCOME REPORT

Proficiency Cycle 18C1

Receive Results By: 4/27/2018

Participation Number 15222

Method GC

Analyst Name Kessler, Karen

Your 18C1 proficiency test outcome is Satisfactory

Evaluation Procedure

First iteration: For each level, the qualified results reported by participating analysts and reference labs are pooled, the mean, standard deviation and acceptable range are calculated using truncation, and results outside the acceptable range are excluded from the second iteration.

Second iteration: The mean, standard deviation and acceptable range are recalculated using truncation, every analyst's qualified results are compared to the recalculated acceptable range, and every analyst is assigned an outcome for the proficiency cycle. All analysts with Results Outside Acceptable Range receive retest samples. The retest results are compared to the acceptable range established by the initial test and the retested analyst's outcome for the proficiency cycle is assigned based on the second comparison.

Type Test	Level ID	Vial Number	Results #1 Reported (g/dL)	#1 Z Score	Results #2 Reported (g/dL)	#2 Z Score
Initial	B	1214	0.085	0.7	0.085	0.7
Initial	D	1412	0.156	0.3	0.156	0.3

Proficiency Cycle Statistics

Level	Lower Limit	Upper Limit	Mean (Average)	Std Dev	N	Number Out of Range	
						1st Iter	2nd Iter
A	0.108	0.126	0.117	0.003	124	2	2
B	0.074	0.092	0.083	0.003	134	0	0
C	0.243	0.285	0.264	0.007	126	2	2
D	0.143	0.167	0.155	0.004	126	0	0
E	0.063	0.075	0.069	0.002	128	0	0

Notes: Z score is your reported analytical result compared to the mean in terms of the standard deviation, calculated as (Result-Mean)/StdDev.
The parameter n is the number of results reported which are used to calculate the second iteration mean and standard deviation.

Florida Department of Law Enforcement

Alcohol Testing Program

BLOOD ALCOHOL PROFICIENCY INITIAL TEST OUTCOME REPORT

Proficiency Cycle 18C1

Receive Results By: 4/27/2018

Participation Number 15275

Method GC

Analyst Name Kotretsos, Eleni

Your 18C1 proficiency test outcome is Satisfactory

Evaluation Procedure

First iteration: For each level, the qualified results reported by participating analysts and reference labs are pooled, the mean, standard deviation and acceptable range are calculated using truncation, and results outside the acceptable range are excluded from the second iteration.

Second iteration: The mean, standard deviation and acceptable range are recalculated using truncation, every analyst's qualified results are compared to the recalculated acceptable range, and every analyst is assigned an outcome for the proficiency cycle. All analysts with Results Outside Acceptable Range receive retest samples. The retest results are compared to the acceptable range established by the initial test and the retested analyst's outcome for the proficiency cycle is assigned based on the second comparison.

Type Test	Level ID	Vial Number	Results #1 Reported (g/dL)	#1 Z Score	Results #2 Reported (g/dL)	#2 Z Score
Initial	D	1413	0.154	-0.3	0.153	-0.5
Initial	E	1511	0.070	0.5	0.068	-0.5

Proficiency Cycle Statistics

Level	Lower Limit	Upper Limit	Mean (Average)	Std Dev	N	Number Out of Range	
						1st Iter	2nd Iter
A	0.108	0.126	0.117	0.003	124	2	2
B	0.074	0.092	0.083	0.003	134	0	0
C	0.243	0.285	0.264	0.007	126	2	2
D	0.143	0.167	0.155	0.004	126	0	0
E	0.063	0.075	0.069	0.002	128	0	0

Notes: Z score is your reported analytical result compared to the mean in terms of the standard deviation, calculated as (Result-Mean)/StdDev.
The parameter n is the number of results reported which are used to calculate the second iteration mean and standard deviation.

Florida Department of Law Enforcement

Alcohol Testing Program

BLOOD ALCOHOL PROFICIENCY INITIAL TEST OUTCOME REPORT

Proficiency Cycle 18C1

Receive Results By: 4/27/2018

Participation Number 15278

Method GC

Analyst Name Kudrysch, John

Your 18C1 proficiency test outcome is: **Satisfactory**

Evaluation Procedure

First iteration: For each level, the qualified results reported by participating analysts and reference labs are pooled, the mean, standard deviation and acceptable range are calculated using truncation, and results outside the acceptable range are excluded from the second iteration.

Second iteration: The mean, standard deviation and acceptable range are recalculated using truncation, every analyst's qualified results are compared to the recalculated acceptable range, and every analyst is assigned an outcome for the proficiency cycle. All analysts with Results Outside Acceptable Range receive retest samples. The retest results are compared to the acceptable range established by the initial test and the retested analyst's outcome for the proficiency cycle is assigned based on the second comparison.

Type Test	Level ID	Vial Number	Results #1 Reported (g/dL)	#1 Z Score	Results #2 Reported (g/dL)	#2 Z Score
Initial	A	1150	0.121	1.3	0.121	1.3
Initial	B	1252	0.088	1.7	0.087	1.3
Initial	C	1350	0.276	1.9	0.277	2.0
Initial	D	1449	0.163	2.0	0.164	2.3
Initial	E	1549	0.072	1.5	0.072	1.5

Proficiency Cycle Statistics

Level	Lower Limit	Upper Limit	Mean (Average)	Std Dev	N	Number Out of Range	
						1st Iter	2nd Iter
A	0.108	0.126	0.117	0.003	124	2	2
B	0.074	0.092	0.083	0.003	134	0	0
C	0.243	0.285	0.264	0.007	126	2	2
D	0.143	0.167	0.155	0.004	126	0	0
E	0.063	0.075	0.069	0.002	130	0	0

Notes: Z score is your reported analytical result compared to the mean in terms of the standard deviation, calculated as (Result-Mean)/StdDev.
The parameter n is the number of results reported which are used to calculate the second iteration mean and standard deviation.

Florida Department of Law Enforcement

Alcohol Testing Program

BLOOD ALCOHOL PROFICIENCY INITIAL TEST OUTCOME REPORT

Proficiency Cycle 18C1

Receive Results By: 4/27/2018

Participation Number 15181

Method GC

Analyst Name Kunsman, Gary

Your 18C1 proficiency test outcome is: **Satisfactory**

Evaluation Procedure

First iteration: For each level, the qualified results reported by participating analysts and reference labs are pooled, the mean, standard deviation and acceptable range are calculated using truncation, and results outside the acceptable range are excluded from the second iteration.

Second iteration: The mean, standard deviation and acceptable range are recalculated using truncation, every analyst's qualified results are compared to the recalculated acceptable range, and every analyst is assigned an outcome for the proficiency cycle. All analysts with Results Outside Acceptable Range receive retest samples. The retest results are compared to the acceptable range established by the initial test and the retested analyst's outcome for the proficiency cycle is assigned based on the second comparison.

Type Test	Level ID	Vial Number	Results #1 Reported (g/dL)	#1 Z Score	Results #2 Reported (g/dL)	#2 Z Score
Initial	A	1139	0.123	2.0	0.121	1.3
Initial	B	1241	0.087	1.3	0.086	1.0
Initial	C	1339	0.282	2.7	0.274	1.6
Initial	D	1438	0.166	2.8	0.160	1.3
Initial	E	1538	0.073	2.0	0.071	1.0

Proficiency Cycle Statistics

Level	Lower Limit	Upper Limit	Mean (Average)	Std Dev	N	Number Out of Range	
						1st Iter	2nd Iter
A	0.108	0.126	0.117	0.003	124	2	2
B	0.074	0.092	0.083	0.003	134	0	0
C	0.243	0.285	0.264	0.007	126	2	2
D	0.143	0.167	0.155	0.004	126	0	0
E	0.063	0.075	0.069	0.002	130	0	0

Notes: Z score is your reported analytical result compared to the mean in terms of the standard deviation, calculated as (Result-Mean)/StdDev.
The parameter n is the number of results reported which are used to calculate the second iteration mean and standard deviation.

Florida Department of Law Enforcement

Alcohol Testing Program

BLOOD ALCOHOL PROFICIENCY INITIAL TEST OUTCOME REPORT

Proficiency Cycle 18C1

Receive Results By: 4/27/2018

Participation Number 15243

Method GC

Analyst Name Lafferty, Mark

Your 18C1 proficiency test outcome is Satisfactory

Evaluation Procedure

First iteration: For each level, the qualified results reported by participating analysts and reference labs are pooled, the mean, standard deviation and acceptable range are calculated using truncation, and results outside the acceptable range are excluded from the second iteration.

Second iteration: The mean, standard deviation and acceptable range are recalculated using truncation, every analyst's qualified results are compared to the recalculated acceptable range, and every analyst is assigned an outcome for the proficiency cycle. All analysts with Results Outside Acceptable Range receive retest samples. The retest results are compared to the acceptable range established by the initial test and the retested analyst's outcome for the proficiency cycle is assigned based on the second comparison.

Type Test	Level ID	Vial Number	Results #1 Reported (g/dL)	#1 Z Score	Results #2 Reported (g/dL)	#2 Z Score
Initial	B	1215	0.083	0.0	0.084	0.3
Initial	D	1414	0.155	0.0	0.155	0.0

Proficiency Cycle Statistics

Level	Lower Limit	Upper Limit	Mean (Average)	Std Dev	N	Number Out of Range	
						1st Iter	2nd Iter
A	0.108	0.126	0.117	0.003	124	2	2
B	0.074	0.092	0.083	0.003	134	0	0
C	0.243	0.285	0.264	0.007	126	2	2
D	0.143	0.167	0.155	0.004	126	0	0
E	0.063	0.075	0.069	0.002	128	0	0

Notes: Z score is your reported analytical result compared to the mean in terms of the standard deviation, calculated as (Result-Mean)/StdDev.
The parameter n is the number of results reported which are used to calculate the second iteration mean and standard deviation.

Florida Department of Law Enforcement

Alcohol Testing Program

BLOOD ALCOHOL PROFICIENCY INITIAL TEST OUTCOME REPORT

Proficiency Cycle 18C1

Receive Results By: 4/27/2018

Participation Number 15269

Method GC

Analyst Name Lewis, Jennifer

Your 18C1 proficiency test outcome is Satisfactory

Evaluation Procedure

First iteration: For each level, the qualified results reported by participating analysts and reference labs are pooled, the mean, standard deviation and acceptable range are calculated using truncation, and results outside the acceptable range are excluded from the second iteration.

Second iteration: The mean, standard deviation and acceptable range are recalculated using truncation, every analyst's qualified results are compared to the recalculated acceptable range, and every analyst is assigned an outcome for the proficiency cycle. All analysts with Results Outside Acceptable Range receive retest samples. The retest results are compared to the acceptable range established by the initial test and the retested analyst's outcome for the proficiency cycle is assigned based on the second comparison.

Type Test	Level ID	Vial Number	Results #1 Reported (g/dL)	#1 Z Score	Results #2 Reported (g/dL)	#2 Z Score
Initial	A	1111	0.119	0.7	0.119	0.7
Initial	B	1216	0.086	1.0	0.086	1.0

Proficiency Cycle Statistics

Level	Lower Limit	Upper Limit	Mean (Average)	Std Dev	N	Number Out of Range	
						1st Iter	2nd Iter
A	0.108	0.126	0.117	0.003	124	2	2
B	0.074	0.092	0.083	0.003	134	0	0
C	0.243	0.285	0.264	0.007	126	2	2
D	0.143	0.167	0.155	0.004	126	0	0
E	0.063	0.075	0.069	0.002	128	0	0

Notes: Z score is your reported analytical result compared to the mean in terms of the standard deviation, calculated as (Result-Mean)/StdDev.
The parameter n is the number of results reported which are used to calculate the second iteration mean and standard deviation.

Florida Department of Law Enforcement

Alcohol Testing Program

BLOOD ALCOHOL PROFICIENCY INITIAL TEST OUTCOME REPORT

Proficiency Cycle 18C1

Receive Results By: 4/27/2018

Participation Number 15195

Method GC

Analyst Name Lewis (AA-4), Jennifer

Your 18C1 proficiency test outcome is Satisfactory

Evaluation Procedure

First iteration: For each level, the qualified results reported by participating analysts and reference labs are pooled, the mean, standard deviation and acceptable range are calculated using truncation, and results outside the acceptable range are excluded from the second iteration.

Second iteration: The mean, standard deviation and acceptable range are recalculated using truncation, every analyst's qualified results are compared to the recalculated acceptable range, and every analyst is assigned an outcome for the proficiency cycle. All analysts with Results Outside Acceptable Range receive retest samples. The retest results are compared to the acceptable range established by the initial test and the retested analyst's outcome for the proficiency cycle is assigned based on the second comparison.

Type Test	Level ID	Vial Number	Results #1 Reported (g/dL)	#1 Z Score	Results #2 Reported (g/dL)	#2 Z Score
Initial	C	1309	0.266	0.4	0.267	0.6
Initial	E	1520	0.070	0.5	0.070	0.5

Proficiency Cycle Statistics

Level	Lower Limit	Upper Limit	Mean (Average)	Std Dev	N	Number Out of Range	
						1st Iter	2nd Iter
A	0.108	0.126	0.117	0.003	124	2	2
B	0.074	0.092	0.083	0.003	134	0	0
C	0.243	0.285	0.264	0.007	126	2	2
D	0.143	0.167	0.155	0.004	126	0	0
E	0.063	0.075	0.069	0.002	128	0	0

Notes: Z score is your reported analytical result compared to the mean in terms of the standard deviation, calculated as (Result-Mean)/StdDev.
The parameter n is the number of results reported which are used to calculate the second iteration mean and standard deviation.

Florida Department of Law Enforcement

Alcohol Testing Program

BLOOD ALCOHOL PROFICIENCY RE-TEST OUTCOME REPORT

Proficiency Cycle 18C1

Receive Results By: 5/18/2018

Participation Number 15125

Method GC

Analyst Name Maragh, Sharin

Your 18C1 proficiency test outcome is **Satisfactory** - This report supercedes all other reports for this proficiency cycle

Evaluation Procedure

First iteration: For each level, the qualified results reported by participating analysts and reference labs are pooled, the mean, standard deviation and acceptable range are calculated using truncation, and results outside the acceptable range are excluded from the second iteration.

Second iteration: The mean, standard deviation and acceptable range are recalculated using truncation, every analyst's qualified results are compared to the recalculated acceptable range, and every analyst is assigned an outcome for the proficiency cycle. All analysts with Results Outside Acceptable Range receive retest samples. The retest results are compared to the acceptable range established by the initial test and the retested analyst's outcome for the proficiency cycle is assigned based on the second comparison.

Type Test	Level ID	Vial Number	Results #1 Reported (g/dL)	#1 Z Score	Results #2 Reported (g/dL)	#2 Z Score
Re-Test	A	1169	0.116	-0.3	0.115	-0.7
Re-Test	B	1272	0.083	0.0	0.084	0.3
Re-Test	C	1371	0.260	-0.6	0.261	-0.4
Re-Test	D	1469	0.157	0.5	0.159	1.0
Re-Test	E	1572	0.071	1.0	0.069	0.0

Proficiency Cycle Statistics

Level	Lower Limit	Upper Limit	Mean (Average)	Std Dev	N	Number Out of Range	
						1st Iter	2nd Iter
A	0.108	0.126	0.117	0.003	124	2	2
B	0.074	0.092	0.083	0.003	134	0	0
C	0.243	0.285	0.264	0.007	126	2	2
D	0.143	0.167	0.155	0.004	126	0	0
E	0.063	0.075	0.069	0.002	128	0	0

Notes: Z score is your reported analytical result compared to the mean in terms of the standard deviation, calculated as (Result-Mean)/StdDev.
The parameter n is the number of results reported which are used to calculate the second iteration mean and standard deviation.

Florida Department of Law Enforcement

Alcohol Testing Program

BLOOD ALCOHOL PROFICIENCY INITIAL TEST OUTCOME REPORT

Proficiency Cycle 18C1

Receive Results By: 4/27/2018

Participation Number 15125

Method GC

Analyst Name Maragh, Sharin

Your 18C1 proficiency test outcome is: **Unsatisfactory**

Evaluation Procedure

First iteration: For each level, the qualified results reported by participating analysts and reference labs are pooled, the mean, standard deviation and acceptable range are calculated using truncation, and results outside the acceptable range are excluded from the second iteration.

Second iteration: The mean, standard deviation and acceptable range are recalculated using truncation, every analyst's qualified results are compared to the recalculated acceptable range, and every analyst is assigned an outcome for the proficiency cycle. All analysts with Results Outside Acceptable Range receive retest samples. The retest results are compared to the acceptable range established by the initial test and the retested analyst's outcome for the proficiency cycle is assigned based on the second comparison.

Type Test	Level ID	Vial Number	Results #1 Reported (g/dL)	#1 Z Score	Results #2 Reported (g/dL)	#2 Z Score
Initial	A	1135	0.109	-2.7	0.109	-2.7
Initial	B	1237	0.078	-1.7	0.077	-2.0
Initial	C	1335	0.243	-2.9	0.241	-3.1
Initial	D	1434	0.145	-2.5	0.146	-2.3
Initial	E	1534	0.069	0.0	0.065	-2.0

Proficiency Cycle Statistics

Level	Lower Limit	Upper Limit	Mean (Average)	Std Dev	N	Number Out of Range	
						1st Iter	2nd Iter
A	0.108	0.126	0.117	0.003	124	2	2
B	0.074	0.092	0.083	0.003	134	0	0
C	0.243	0.285	0.264	0.007	126	2	2
D	0.143	0.167	0.155	0.004	126	0	0
E	0.063	0.075	0.069	0.002	130	0	0

Notes: Z score is your reported analytical result compared to the mean in terms of the standard deviation, calculated as (Result-Mean)/StdDev.
The parameter n is the number of results reported which are used to calculate the second iteration mean and standard deviation.

Florida Department of Law Enforcement

Alcohol Testing Program

BLOOD ALCOHOL PROFICIENCY INITIAL TEST OUTCOME REPORT

Proficiency Cycle 18C1

Receive Results By: 4/27/2018

Participation Number 15216

Method GC

Analyst Name Mark, Amy

Your 18C1 proficiency test outcome is Satisfactory

Evaluation Procedure

First iteration: For each level, the qualified results reported by participating analysts and reference labs are pooled, the mean, standard deviation and acceptable range are calculated using truncation, and results outside the acceptable range are excluded from the second iteration.

Second iteration: The mean, standard deviation and acceptable range are recalculated using truncation, every analyst's qualified results are compared to the recalculated acceptable range, and every analyst is assigned an outcome for the proficiency cycle. All analysts with Results Outside Acceptable Range receive retest samples. The retest results are compared to the acceptable range established by the initial test and the retested analyst's outcome for the proficiency cycle is assigned based on the second comparison.

Type Test	Level ID	Vial Number	Results #1 Reported (g/dL)	#1 Z Score	Results #2 Reported (g/dL)	#2 Z Score
Initial	C	1310	0.264	0.1	0.269	0.9
Initial	E	1512	0.069	0.0	0.069	0.0

Proficiency Cycle Statistics

Level	Lower Limit	Upper Limit	Mean (Average)	Std Dev	N	Number Out of Range	
						1st Iter	2nd Iter
A	0.108	0.126	0.117	0.003	124	2	2
B	0.074	0.092	0.083	0.003	134	0	0
C	0.243	0.285	0.264	0.007	126	2	2
D	0.143	0.167	0.155	0.004	126	0	0
E	0.063	0.075	0.069	0.002	128	0	0

Notes: Z score is your reported analytical result compared to the mean in terms of the standard deviation, calculated as (Result-Mean)/StdDev.
The parameter n is the number of results reported which are used to calculate the second iteration mean and standard deviation.

Florida Department of Law Enforcement

Alcohol Testing Program

BLOOD ALCOHOL PROFICIENCY INITIAL TEST OUTCOME REPORT

Proficiency Cycle 18C1

Receive Results By: 4/27/2018

Participation Number 15266

Method GC

Analyst Name Mazek, Kathleen

Your 18C1 proficiency test outcome is Satisfactory

Evaluation Procedure

First iteration: For each level, the qualified results reported by participating analysts and reference labs are pooled, the mean, standard deviation and acceptable range are calculated using truncation, and results outside the acceptable range are excluded from the second iteration.

Second iteration: The mean, standard deviation and acceptable range are recalculated using truncation, every analyst's qualified results are compared to the recalculated acceptable range, and every analyst is assigned an outcome for the proficiency cycle. All analysts with Results Outside Acceptable Range receive retest samples. The retest results are compared to the acceptable range established by the initial test and the retested analyst's outcome for the proficiency cycle is assigned based on the second comparison.

Type Test	Level ID	Vial Number	Results #1 Reported (g/dL)	#1 Z Score	Results #2 Reported (g/dL)	#2 Z Score
Initial	C	1311	0.268	0.7	0.268	0.7
Initial	E	1513	0.069	0.0	0.070	0.5

Proficiency Cycle Statistics

Level	Lower Limit	Upper Limit	Mean (Average)	Std Dev	N	Number Out of Range	
						1st Iter	2nd Iter
A	0.108	0.126	0.117	0.003	124	2	2
B	0.074	0.092	0.083	0.003	134	0	0
C	0.243	0.285	0.264	0.007	126	2	2
D	0.143	0.167	0.155	0.004	126	0	0
E	0.063	0.075	0.069	0.002	128	0	0

Notes: Z score is your reported analytical result compared to the mean in terms of the standard deviation, calculated as $(\text{Result} - \text{Mean}) / \text{StdDev}$.
The parameter n is the number of results reported which are used to calculate the second iteration mean and standard deviation.

Florida Department of Law Enforcement

Alcohol Testing Program

BLOOD ALCOHOL PROFICIENCY INITIAL TEST OUTCOME REPORT

Proficiency Cycle 18C1

Receive Results By: 4/27/2018

Participation Number 15064

Method GC

Analyst Name Mazek (AA-4), Kathleen

Your 18C1 proficiency test outcome is Satisfactory

Evaluation Procedure

First iteration: For each level, the qualified results reported by participating analysts and reference labs are pooled, the mean, standard deviation and acceptable range are calculated using truncation, and results outside the acceptable range are excluded from the second iteration.

Second iteration: The mean, standard deviation and acceptable range are recalculated using truncation, every analyst's qualified results are compared to the recalculated acceptable range, and every analyst is assigned an outcome for the proficiency cycle. All analysts with Results Outside Acceptable Range receive retest samples. The retest results are compared to the acceptable range established by the initial test and the retested analyst's outcome for the proficiency cycle is assigned based on the second comparison.

Type Test	Level ID	Vial Number	Results #1 Reported (g/dL)	#1 Z Score	Results #2 Reported (g/dL)	#2 Z Score
Initial	B	1217	0.083	0.0	0.085	0.7
Initial	D	1415	0.155	0.0	0.156	0.3

Proficiency Cycle Statistics

Level	Lower Limit	Upper Limit	Mean (Average)	Std Dev	N	Number Out of Range	
						1st Iter	2nd Iter
A	0.108	0.126	0.117	0.003	124	2	2
B	0.074	0.092	0.083	0.003	134	0	0
C	0.243	0.285	0.264	0.007	126	2	2
D	0.143	0.167	0.155	0.004	126	0	0
E	0.063	0.075	0.069	0.002	128	0	0

Notes: Z score is your reported analytical result compared to the mean in terms of the standard deviation, calculated as (Result-Mean)/StdDev.
The parameter n is the number of results reported which are used to calculate the second iteration mean and standard deviation.

Florida Department of Law Enforcement

Alcohol Testing Program

BLOOD ALCOHOL PROFICIENCY INITIAL TEST OUTCOME REPORT

Proficiency Cycle 18C1

Receive Results By: 4/27/2018

Participation Number 15188

Method GC

Analyst Name McKee, Stacy

Your 18C1 proficiency test outcome is: Satisfactory

Evaluation Procedure

First iteration: For each level, the qualified results reported by participating analysts and reference labs are pooled, the mean, standard deviation and acceptable range are calculated using truncation, and results outside the acceptable range are excluded from the second iteration.

Second iteration: The mean, standard deviation and acceptable range are recalculated using truncation, every analyst's qualified results are compared to the recalculated acceptable range, and every analyst is assigned an outcome for the proficiency cycle. All analysts with Results Outside Acceptable Range receive retest samples. The retest results are compared to the acceptable range established by the initial test and the retested analyst's outcome for the proficiency cycle is assigned based on the second comparison.

Type Test	Level ID	Vial Number	Results #1 Reported (g/dL)	#1 Z Score	Results #2 Reported (g/dL)	#2 Z Score
Initial	A	1137	0.113	-1.3	0.116	-0.3
Initial	B	1239	0.083	0.0	0.083	0.0
Initial	C	1337	0.250	-1.9	0.258	-0.7
Initial	D	1436	0.151	-1.0	0.152	-0.8
Initial	E	1536	0.067	-1.0	0.069	0.0

Proficiency Cycle Statistics

Level	Lower Limit	Upper Limit	Mean (Average)	Std Dev	N	Number Out of Range	
						1st Iter	2nd Iter
A	0.108	0.126	0.117	0.003	124	2	2
B	0.074	0.092	0.083	0.003	134	0	0
C	0.243	0.285	0.264	0.007	126	2	2
D	0.143	0.167	0.155	0.004	126	0	0
E	0.063	0.075	0.069	0.002	130	0	0

Notes: Z score is your reported analytical result compared to the mean in terms of the standard deviation, calculated as (Result-Mean)/StdDev.
The parameter n is the number of results reported which are used to calculate the second iteration mean and standard deviation.

Florida Department of Law Enforcement

Alcohol Testing Program

BLOOD ALCOHOL PROFICIENCY INITIAL TEST OUTCOME REPORT

Proficiency Cycle 18C1

Receive Results By: 4/27/2018

Participation Number 15274

Method GC

Analyst Name Miller, Mattheu

Your 18C1 proficiency test outcome is Satisfactory

Evaluation Procedure

First iteration: For each level, the qualified results reported by participating analysts and reference labs are pooled, the mean, standard deviation and acceptable range are calculated using truncation, and results outside the acceptable range are excluded from the second iteration.

Second iteration: The mean, standard deviation and acceptable range are recalculated using truncation, every analyst's qualified results are compared to the recalculated acceptable range, and every analyst is assigned an outcome for the proficiency cycle. All analysts with Results Outside Acceptable Range receive retest samples. The retest results are compared to the acceptable range established by the initial test and the retested analyst's outcome for the proficiency cycle is assigned based on the second comparison.

Type Test	Level ID	Vial Number	Results #1 Reported (g/dL)	#1 Z Score	Results #2 Reported (g/dL)	#2 Z Score
Initial	A	1113	0.117	0.0	0.118	0.3
Initial	B	1219	0.083	0.0	0.084	0.3

Proficiency Cycle Statistics

Level	Lower Limit	Upper Limit	Mean (Average)	Std Dev	N	Number Out of Range	
						1st Iter	2nd Iter
A	0.108	0.126	0.117	0.003	124	2	2
B	0.074	0.092	0.083	0.003	134	0	0
C	0.243	0.285	0.264	0.007	126	2	2
D	0.143	0.167	0.155	0.004	126	0	0
E	0.063	0.075	0.069	0.002	128	0	0

Notes: Z score is your reported analytical result compared to the mean in terms of the standard deviation, calculated as (Result-Mean)/StdDev.
The parameter n is the number of results reported which are used to calculate the second iteration mean and standard deviation.

Florida Department of Law Enforcement

Alcohol Testing Program

BLOOD ALCOHOL PROFICIENCY INITIAL TEST OUTCOME REPORT

Proficiency Cycle 18C1

Receive Results By: 4/27/2018

Participation Number 15201

Method GC

Analyst Name Miller, Russell

Your 18C1 proficiency test outcome is Satisfactory

Evaluation Procedure

First iteration: For each level, the qualified results reported by participating analysts and reference labs are pooled, the mean, standard deviation and acceptable range are calculated using truncation, and results outside the acceptable range are excluded from the second iteration.

Second iteration: The mean, standard deviation and acceptable range are recalculated using truncation, every analyst's qualified results are compared to the recalculated acceptable range, and every analyst is assigned an outcome for the proficiency cycle. All analysts with Results Outside Acceptable Range receive retest samples. The retest results are compared to the acceptable range established by the initial test and the retested analyst's outcome for the proficiency cycle is assigned based on the second comparison.

Type Test	Level ID	Vial Number	Results #1 Reported (g/dL)	#1 Z Score	Results #2 Reported (g/dL)	#2 Z Score
Initial	A	1112	0.117	0.0	0.116	-0.3
Initial	D	1416	0.155	0.0	0.155	0.0

Proficiency Cycle Statistics

Level	Lower Limit	Upper Limit	Mean (Average)	Std Dev	N	Number Out of Range	
						1st Iter	2nd Iter
A	0.108	0.126	0.117	0.003	124	2	2
B	0.074	0.092	0.083	0.003	134	0	0
C	0.243	0.285	0.264	0.007	126	2	2
D	0.143	0.167	0.155	0.004	126	0	0
E	0.063	0.075	0.069	0.002	128	0	0

Notes: Z score is your reported analytical result compared to the mean in terms of the standard deviation, calculated as (Result-Mean)/StdDev.
The parameter n is the number of results reported which are used to calculate the second iteration mean and standard deviation.

Florida Department of Law Enforcement

Alcohol Testing Program

BLOOD ALCOHOL PROFICIENCY INITIAL TEST OUTCOME REPORT

Proficiency Cycle 18C1

Receive Results By: 4/27/2018

Participation Number 15260

Method GC

Analyst Name Miller, Nicole

Your 18C1 proficiency test outcome is Satisfactory

Evaluation Procedure

First iteration: For each level, the qualified results reported by participating analysts and reference labs are pooled, the mean, standard deviation and acceptable range are calculated using truncation, and results outside the acceptable range are excluded from the second iteration.

Second iteration: The mean, standard deviation and acceptable range are recalculated using truncation, every analyst's qualified results are compared to the recalculated acceptable range, and every analyst is assigned an outcome for the proficiency cycle. All analysts with Results Outside Acceptable Range receive retest samples. The retest results are compared to the acceptable range established by the initial test and the retested analyst's outcome for the proficiency cycle is assigned based on the second comparison.

Type Test	Level ID	Vial Number	Results #1 Reported (g/dL)	#1 Z Score	Results #2 Reported (g/dL)	#2 Z Score
Initial	B	1218	0.080	-1.0	0.080	-1.0
Initial	E	1514	0.066	-1.5	0.066	-1.5

Proficiency Cycle Statistics

Level	Lower Limit	Upper Limit	Mean (Average)	Std Dev	N	Number Out of Range	
						1st Iter	2nd Iter
A	0.108	0.126	0.117	0.003	124	2	2
B	0.074	0.092	0.083	0.003	134	0	0
C	0.243	0.285	0.264	0.007	126	2	2
D	0.143	0.167	0.155	0.004	126	0	0
E	0.063	0.075	0.069	0.002	128	0	0

Notes: Z score is your reported analytical result compared to the mean in terms of the standard deviation, calculated as (Result-Mean)/StdDev.
The parameter n is the number of results reported which are used to calculate the second iteration mean and standard deviation.

Florida Department of Law Enforcement

Alcohol Testing Program

BLOOD ALCOHOL PROFICIENCY INITIAL TEST OUTCOME REPORT

Proficiency Cycle 18C1

Receive Results By: 4/27/2018

Participation Number 15254

Method GC

Analyst Name Miller (AA-4), Mattheu

Your 18C1 proficiency test outcome is Satisfactory

Evaluation Procedure

First iteration: For each level, the qualified results reported by participating analysts and reference labs are pooled, the mean, standard deviation and acceptable range are calculated using truncation, and results outside the acceptable range are excluded from the second iteration.

Second iteration: The mean, standard deviation and acceptable range are recalculated using truncation, every analyst's qualified results are compared to the recalculated acceptable range, and every analyst is assigned an outcome for the proficiency cycle. All analysts with Results Outside Acceptable Range receive retest samples. The retest results are compared to the acceptable range established by the initial test and the retested analyst's outcome for the proficiency cycle is assigned based on the second comparison.

Type Test	Level ID	Vial Number	Results #1 Reported (g/dL)	#1 Z Score	Results #2 Reported (g/dL)	#2 Z Score
Initial	D	1417	0.155	0.0	0.158	0.8
Initial	E	1515	0.068	-0.5	0.068	-0.5

Proficiency Cycle Statistics

Level	Lower Limit	Upper Limit	Mean (Average)	Std Dev	N	Number Out of Range	
						1st Iter	2nd Iter
A	0.108	0.126	0.117	0.003	124	2	2
B	0.074	0.092	0.083	0.003	134	0	0
C	0.243	0.285	0.264	0.007	126	2	2
D	0.143	0.167	0.155	0.004	126	0	0
E	0.063	0.075	0.069	0.002	128	0	0

Notes: Z score is your reported analytical result compared to the mean in terms of the standard deviation, calculated as (Result-Mean)/StdDev.
The parameter n is the number of results reported which are used to calculate the second iteration mean and standard deviation.

Florida Department of Law Enforcement

Alcohol Testing Program

BLOOD ALCOHOL PROFICIENCY INITIAL TEST OUTCOME REPORT

Proficiency Cycle 18C1

Receive Results By: 4/27/2018

Participation Number 15211

Method GC

Analyst Name Montgomery (HS108), Lisa

Your 18C1 proficiency test outcome is Satisfactory

Evaluation Procedure

First iteration: For each level, the qualified results reported by participating analysts and reference labs are pooled, the mean, standard deviation and acceptable range are calculated using truncation, and results outside the acceptable range are excluded from the second iteration.

Second iteration: The mean, standard deviation and acceptable range are recalculated using truncation, every analyst's qualified results are compared to the recalculated acceptable range, and every analyst is assigned an outcome for the proficiency cycle. All analysts with Results Outside Acceptable Range receive retest samples. The retest results are compared to the acceptable range established by the initial test and the retested analyst's outcome for the proficiency cycle is assigned based on the second comparison.

Type Test	Level ID	Vial Number	Results #1 Reported (g/dL)	#1 Z Score	Results #2 Reported (g/dL)	#2 Z Score
Initial	A	1114	0.120	1.0	0.118	0.3
Initial	D	1418	0.157	0.5	0.157	0.5

Proficiency Cycle Statistics

Level	Lower Limit	Upper Limit	Mean (Average)	Std Dev	N	Number Out of Range	
						1st Iter	2nd Iter
A	0.108	0.126	0.117	0.003	124	2	2
B	0.074	0.092	0.083	0.003	134	0	0
C	0.243	0.285	0.264	0.007	126	2	2
D	0.143	0.167	0.155	0.004	126	0	0
E	0.063	0.075	0.069	0.002	128	0	0

Notes: Z score is your reported analytical result compared to the mean in terms of the standard deviation, calculated as (Result-Mean)/StdDev.
The parameter n is the number of results reported which are used to calculate the second iteration mean and standard deviation.

Florida Department of Law Enforcement

Alcohol Testing Program

BLOOD ALCOHOL PROFICIENCY INITIAL TEST OUTCOME REPORT

Proficiency Cycle 18C1

Receive Results By: 4/27/2018

Participation Number 15147

Method GC

Analyst Name Montgomery (HS110), Lisa

Your 18C1 proficiency test outcome is Satisfactory

Evaluation Procedure

First iteration: For each level, the qualified results reported by participating analysts and reference labs are pooled, the mean, standard deviation and acceptable range are calculated using truncation, and results outside the acceptable range are excluded from the second iteration.

Second iteration: The mean, standard deviation and acceptable range are recalculated using truncation, every analyst's qualified results are compared to the recalculated acceptable range, and every analyst is assigned an outcome for the proficiency cycle. All analysts with Results Outside Acceptable Range receive retest samples. The retest results are compared to the acceptable range established by the initial test and the retested analyst's outcome for the proficiency cycle is assigned based on the second comparison.

Type Test	Level ID	Vial Number	Results #1 Reported (g/dL)	#1 Z Score	Results #2 Reported (g/dL)	#2 Z Score
Initial	B	1220	0.082	-0.3	0.082	-0.3
Initial	E	1516	0.067	-1.0	0.067	-1.0

Proficiency Cycle Statistics

Level	Lower Limit	Upper Limit	Mean (Average)	Std Dev	N	Number Out of Range	
						1st Iter	2nd Iter
A	0.108	0.126	0.117	0.003	124	2	2
B	0.074	0.092	0.083	0.003	134	0	0
C	0.243	0.285	0.264	0.007	126	2	2
D	0.143	0.167	0.155	0.004	126	0	0
E	0.063	0.075	0.069	0.002	128	0	0

Notes: Z score is your reported analytical result compared to the mean in terms of the standard deviation, calculated as (Result-Mean)/StdDev.
The parameter n is the number of results reported which are used to calculate the second iteration mean and standard deviation.

Florida Department of Law Enforcement

Alcohol Testing Program

BLOOD ALCOHOL PROFICIENCY RE-TEST OUTCOME REPORT

Proficiency Cycle 18C1 Receive Results By: 5/18/2018 Participation Number 15099 Method GC
 Analyst Name Nash-Montgomery, Nadra

Your 18C1 proficiency test outcome is Satisfactory - This report supercedes all other reports for this proficiency cycle

Evaluation Procedure

First iteration: For each level, the qualified results reported by participating analysts and reference labs are pooled, the mean, standard deviation and acceptable range are calculated using truncation, and results outside the acceptable range are excluded from the second iteration.

Second iteration: The mean, standard deviation and acceptable range are recalculated using truncation, every analyst's qualified results are compared to the recalculated acceptable range, and every analyst is assigned an outcome for the proficiency cycle. All analysts with Results Outside Acceptable Range receive retest samples. The retest results are compared to the acceptable range established by the initial test and the retested analyst's outcome for the proficiency cycle is assigned based on the second comparison.

Type Test	Level ID	Vial Number	Results #1 Reported (g/dL)	#1 Z Score	Results #2 Reported (g/dL)	#2 Z Score
Re-Test	A	1171	0.115	-0.7	0.112	-1.7
Re-Test	B	1273	0.082	-0.3	0.080	-1.0
Re-Test	C	1372	0.254	-1.4	0.255	-1.3
Re-Test	D	1471	0.159	1.0	0.161	1.5
Re-Test	E	1569	0.069	0.0	0.070	0.5

Proficiency Cycle Statistics

Level	Lower Limit	Upper Limit	Mean (Average)	Std Dev	N	Number Out of Range	
						1st Iter	2nd Iter
A	0.108	0.126	0.117	0.003	124	2	2
B	0.074	0.092	0.083	0.003	134	0	0
C	0.243	0.285	0.264	0.007	126	2	2
D	0.143	0.167	0.155	0.004	126	0	0
E	0.063	0.075	0.069	0.002	128	0	0

Notes: Z score is your reported analytical result compared to the mean in terms of the standard deviation, calculated as (Result-Mean)/StdDev.
 The parameter n is the number of results reported which are used to calculate the second iteration mean and standard deviation.

Florida Department of Law Enforcement

Alcohol Testing Program

BLOOD ALCOHOL PROFICIENCY INITIAL TEST OUTCOME REPORT

Proficiency Cycle 18C1

Receive Results By: 4/27/2018

Participation Number 15099

Method GC

Analyst Name Nash-Montgomery, Nadra

Your 18C1 proficiency test outcome is: **Unsatisfactory**

Evaluation Procedure

First iteration: For each level, the qualified results reported by participating analysts and reference labs are pooled, the mean, standard deviation and acceptable range are calculated using truncation, and results outside the acceptable range are excluded from the second iteration.

Second iteration: The mean, standard deviation and acceptable range are recalculated using truncation, every analyst's qualified results are compared to the recalculated acceptable range, and every analyst is assigned an outcome for the proficiency cycle. All analysts with Results Outside Acceptable Range receive retest samples. The retest results are compared to the acceptable range established by the initial test and the retested analyst's outcome for the proficiency cycle is assigned based on the second comparison.

Type Test	Level ID	Vial Number	Results #1 Reported (g/dL)	#1 Z Score	Results #2 Reported (g/dL)	#2 Z Score
Initial	A	1134	0.109	-2.7	0.107	-3.3
Initial	B	1236	0.079	-1.3	0.077	-2.0
Initial	C	1334	0.244	-2.7	0.240	-3.3
Initial	D	1433	0.150	-1.3	0.147	-2.0
Initial	E	1533	0.064	-2.5	0.072	1.5

Proficiency Cycle Statistics

Level	Lower Limit	Upper Limit	Mean (Average)	Std Dev	N	Number Out of Range	
						1st Iter	2nd Iter
A	0.108	0.126	0.117	0.003	124	2	2
B	0.074	0.092	0.083	0.003	134	0	0
C	0.243	0.285	0.264	0.007	126	2	2
D	0.143	0.167	0.155	0.004	126	0	0
E	0.063	0.075	0.069	0.002	130	0	0

Notes: Z score is your reported analytical result compared to the mean in terms of the standard deviation, calculated as (Result-Mean)/StdDev.
The parameter n is the number of results reported which are used to calculate the second iteration mean and standard deviation.

Florida Department of Law Enforcement

Alcohol Testing Program

BLOOD ALCOHOL PROFICIENCY INITIAL TEST OUTCOME REPORT

Proficiency Cycle 18C1

Receive Results By: 4/27/2018

Participation Number 15273

Method GC

Analyst Name Pacheco, Jamie

Your 18C1 proficiency test outcome is Satisfactory

Evaluation Procedure

First iteration: For each level, the qualified results reported by participating analysts and reference labs are pooled, the mean, standard deviation and acceptable range are calculated using truncation, and results outside the acceptable range are excluded from the second iteration.

Second iteration: The mean, standard deviation and acceptable range are recalculated using truncation, every analyst's qualified results are compared to the recalculated acceptable range, and every analyst is assigned an outcome for the proficiency cycle. All analysts with Results Outside Acceptable Range receive retest samples. The retest results are compared to the acceptable range established by the initial test and the retested analyst's outcome for the proficiency cycle is assigned based on the second comparison.

Type Test	Level ID	Vial Number	Results #1 Reported (g/dL)	#1 Z Score	Results #2 Reported (g/dL)	#2 Z Score
Initial	B	1221	0.085	0.7	0.085	0.7
Initial	C	1312	0.267	0.6	0.267	0.6

Proficiency Cycle Statistics

Level	Lower Limit	Upper Limit	Mean (Average)	Std Dev	N	Number Out of Range	
						1st Iter	2nd Iter
A	0.108	0.126	0.117	0.003	124	2	2
B	0.074	0.092	0.083	0.003	134	0	0
C	0.243	0.285	0.264	0.007	126	2	2
D	0.143	0.167	0.155	0.004	126	0	0
E	0.063	0.075	0.069	0.002	128	0	0

Notes: Z score is your reported analytical result compared to the mean in terms of the standard deviation, calculated as (Result-Mean)/StdDev.
The parameter n is the number of results reported which are used to calculate the second iteration mean and standard deviation.

Florida Department of Law Enforcement

Alcohol Testing Program

BLOOD ALCOHOL PROFICIENCY INITIAL TEST OUTCOME REPORT

Proficiency Cycle 18C1

Receive Results By: 4/27/2018

Participation Number 15235

Method GC

Analyst Name Pacheco (AA-4), Jamie

Your 18C1 proficiency test outcome is Satisfactory

Evaluation Procedure

First iteration: For each level, the qualified results reported by participating analysts and reference labs are pooled, the mean, standard deviation and acceptable range are calculated using truncation, and results outside the acceptable range are excluded from the second iteration.

Second iteration: The mean, standard deviation and acceptable range are recalculated using truncation, every analyst's qualified results are compared to the recalculated acceptable range, and every analyst is assigned an outcome for the proficiency cycle. All analysts with Results Outside Acceptable Range receive retest samples. The retest results are compared to the acceptable range established by the initial test and the retested analyst's outcome for the proficiency cycle is assigned based on the second comparison.

Type Test	Level ID	Vial Number	Results #1 Reported (g/dL)	#1 Z Score	Results #2 Reported (g/dL)	#2 Z Score
Initial	A	1115	0.116	-0.3	0.116	-0.3
Initial	E	1517	0.067	-1.0	0.067	-1.0

Proficiency Cycle Statistics

Level	Lower Limit	Upper Limit	Mean (Average)	Std Dev	N	Number Out of Range	
						1st Iter	2nd Iter
A	0.108	0.126	0.117	0.003	124	2	2
B	0.074	0.092	0.083	0.003	134	0	0
C	0.243	0.285	0.264	0.007	126	2	2
D	0.143	0.167	0.155	0.004	126	0	0
E	0.063	0.075	0.069	0.002	128	0	0

Notes: Z score is your reported analytical result compared to the mean in terms of the standard deviation, calculated as (Result-Mean)/StdDev.
The parameter n is the number of results reported which are used to calculate the second iteration mean and standard deviation.

Florida Department of Law Enforcement

Alcohol Testing Program

BLOOD ALCOHOL PROFICIENCY INITIAL TEST OUTCOME REPORT

Proficiency Cycle 18C1

Receive Results By: 4/27/2018

Participation Number 15224

Method GC

Analyst Name Patel, Minakshi

Your 18C1 proficiency test outcome is Satisfactory

Evaluation Procedure

First iteration: For each level, the qualified results reported by participating analysts and reference labs are pooled, the mean, standard deviation and acceptable range are calculated using truncation, and results outside the acceptable range are excluded from the second iteration.

Second iteration: The mean, standard deviation and acceptable range are recalculated using truncation, every analyst's qualified results are compared to the recalculated acceptable range, and every analyst is assigned an outcome for the proficiency cycle. All analysts with Results Outside Acceptable Range receive retest samples. The retest results are compared to the acceptable range established by the initial test and the retested analyst's outcome for the proficiency cycle is assigned based on the second comparison.

Type Test	Level ID	Vial Number	Results #1 Reported (g/dL)	#1 Z Score	Results #2 Reported (g/dL)	#2 Z Score
Initial	B	1222	0.085	0.7	0.085	0.7
Initial	C	1313	0.264	0.1	0.263	0.0

Proficiency Cycle Statistics

Level	Lower Limit	Upper Limit	Mean (Average)	Std Dev	N	Number Out of Range	
						1st Iter	2nd Iter
A	0.108	0.126	0.117	0.003	124	2	2
B	0.074	0.092	0.083	0.003	134	0	0
C	0.243	0.285	0.264	0.007	126	2	2
D	0.143	0.167	0.155	0.004	126	0	0
E	0.063	0.075	0.069	0.002	128	0	0

Notes: Z score is your reported analytical result compared to the mean in terms of the standard deviation, calculated as (Result-Mean)/StdDev.
The parameter n is the number of results reported which are used to calculate the second iteration mean and standard deviation.

Florida Department of Law Enforcement

Alcohol Testing Program

BLOOD ALCOHOL PROFICIENCY INITIAL TEST OUTCOME REPORT

Proficiency Cycle 18C1

Receive Results By: 4/27/2018

Participation Number 15282

Method GC

Analyst Name Poidomani, Anthony

Your 18C1 proficiency test outcome is: **Satisfactory**

Evaluation Procedure

First iteration: For each level, the qualified results reported by participating analysts and reference labs are pooled, the mean, standard deviation and acceptable range are calculated using truncation, and results outside the acceptable range are excluded from the second iteration.

Second iteration: The mean, standard deviation and acceptable range are recalculated using truncation, every analyst's qualified results are compared to the recalculated acceptable range, and every analyst is assigned an outcome for the proficiency cycle. All analysts with Results Outside Acceptable Range receive retest samples. The retest results are compared to the acceptable range established by the initial test and the retested analyst's outcome for the proficiency cycle is assigned based on the second comparison.

Type Test	Level ID	Vial Number	Results #1 Reported (g/dL)	#1 Z Score	Results #2 Reported (g/dL)	#2 Z Score
Initial	A	1145	0.118	0.3	0.118	0.3
Initial	B	1247	0.085	0.7	0.085	0.7
Initial	C	1345	0.262	-0.1	0.266	0.4
Initial	D	1444	0.156	0.3	0.159	1.0
Initial	E	1544	0.069	0.0	0.070	0.5

Proficiency Cycle Statistics

Level	Lower Limit	Upper Limit	Mean (Average)	Std Dev	N	Number Out of Range	
						1st Iter	2nd Iter
A	0.108	0.126	0.117	0.003	124	2	2
B	0.074	0.092	0.083	0.003	134	0	0
C	0.243	0.285	0.264	0.007	126	2	2
D	0.143	0.167	0.155	0.004	126	0	0
E	0.063	0.075	0.069	0.002	130	0	0

Notes: Z score is your reported analytical result compared to the mean in terms of the standard deviation, calculated as (Result-Mean)/StdDev.
The parameter n is the number of results reported which are used to calculate the second iteration mean and standard deviation.

Florida Department of Law Enforcement

Alcohol Testing Program

BLOOD ALCOHOL PROFICIENCY INITIAL TEST OUTCOME REPORT

Proficiency Cycle 18C1

Receive Results By: 4/27/2018

Participation Number 15263

Method GC

Analyst Name Potter, Kaitlynn

Your 18C1 proficiency test outcome is: **Satisfactory**

Evaluation Procedure

First iteration: For each level, the qualified results reported by participating analysts and reference labs are pooled, the mean, standard deviation and acceptable range are calculated using truncation, and results outside the acceptable range are excluded from the second iteration.

Second iteration: The mean, standard deviation and acceptable range are recalculated using truncation, every analyst's qualified results are compared to the recalculated acceptable range, and every analyst is assigned an outcome for the proficiency cycle. All analysts with Results Outside Acceptable Range receive retest samples. The retest results are compared to the acceptable range established by the initial test and the retested analyst's outcome for the proficiency cycle is assigned based on the second comparison.

Type Test	Level ID	Vial Number	Results #1 Reported (g/dL)	#1 Z Score	Results #2 Reported (g/dL)	#2 Z Score
Initial	A	1140	0.115	-0.7	0.117	0.0
Initial	B	1242	0.083	0.0	0.082	-0.3
Initial	C	1340	0.258	-0.7	0.257	-0.9
Initial	D	1439	0.151	-1.0	0.148	-1.8
Initial	E	1539	0.068	-0.5	0.067	-1.0

Proficiency Cycle Statistics

Level	Lower Limit	Upper Limit	Mean (Average)	Std Dev	N	Number Out of Range	
						1st Iter	2nd Iter
A	0.108	0.126	0.117	0.003	124	2	2
B	0.074	0.092	0.083	0.003	134	0	0
C	0.243	0.285	0.264	0.007	126	2	2
D	0.143	0.167	0.155	0.004	126	0	0
E	0.063	0.075	0.069	0.002	130	0	0

Notes: Z score is your reported analytical result compared to the mean in terms of the standard deviation, calculated as (Result-Mean)/StdDev.
The parameter n is the number of results reported which are used to calculate the second iteration mean and standard deviation.

Florida Department of Law Enforcement

Alcohol Testing Program

BLOOD ALCOHOL PROFICIENCY INITIAL TEST OUTCOME REPORT

Proficiency Cycle 18C1

Receive Results By: 4/27/2018

Participation Number 15284

Method GC

Analyst Name Powell, Anne

Your 18C1 proficiency test outcome is: **Satisfactory**

Evaluation Procedure

First iteration: For each level, the qualified results reported by participating analysts and reference labs are pooled, the mean, standard deviation and acceptable range are calculated using truncation, and results outside the acceptable range are excluded from the second iteration.

Second iteration: The mean, standard deviation and acceptable range are recalculated using truncation, every analyst's qualified results are compared to the recalculated acceptable range, and every analyst is assigned an outcome for the proficiency cycle. All analysts with Results Outside Acceptable Range receive retest samples. The retest results are compared to the acceptable range established by the initial test and the retested analyst's outcome for the proficiency cycle is assigned based on the second comparison.

Type Test	Level ID	Vial Number	Results #1 Reported (g/dL)	#1 Z Score	Results #2 Reported (g/dL)	#2 Z Score
Initial	A	1154	0.120	1.0	0.120	1.0
Initial	B	1256	0.087	1.3	0.086	1.0
Initial	C	1354	0.273	1.4	0.273	1.4
Initial	D	1453	0.161	1.5	0.160	1.3
Initial	E	1553	0.071	1.0	0.071	1.0

Proficiency Cycle Statistics

Level	Lower Limit	Upper Limit	Mean (Average)	Std Dev	N	Number Out of Range	
						1st Iter	2nd Iter
A	0.108	0.126	0.117	0.003	124	2	2
B	0.074	0.092	0.083	0.003	134	0	0
C	0.243	0.285	0.264	0.007	126	2	2
D	0.143	0.167	0.155	0.004	126	0	0
E	0.063	0.075	0.069	0.002	130	0	0

Notes: Z score is your reported analytical result compared to the mean in terms of the standard deviation, calculated as (Result-Mean)/StdDev.
The parameter n is the number of results reported which are used to calculate the second iteration mean and standard deviation.

Florida Department of Law Enforcement

Alcohol Testing Program

BLOOD ALCOHOL PROFICIENCY INITIAL TEST OUTCOME REPORT

Proficiency Cycle 18C1

Receive Results By: 4/27/2018

Participation Number 15246

Method GC

Analyst Name Ramsey, Shibaughn

Your 18C1 proficiency test outcome is Satisfactory

Evaluation Procedure

First iteration: For each level, the qualified results reported by participating analysts and reference labs are pooled, the mean, standard deviation and acceptable range are calculated using truncation, and results outside the acceptable range are excluded from the second iteration.

Second iteration: The mean, standard deviation and acceptable range are recalculated using truncation, every analyst's qualified results are compared to the recalculated acceptable range, and every analyst is assigned an outcome for the proficiency cycle. All analysts with Results Outside Acceptable Range receive retest samples. The retest results are compared to the acceptable range established by the initial test and the retested analyst's outcome for the proficiency cycle is assigned based on the second comparison.

Type Test	Level ID	Vial Number	Results #1 Reported (g/dL)	#1 Z Score	Results #2 Reported (g/dL)	#2 Z Score
Initial	A	1116	0.116	-0.3	0.116	-0.3
Initial	D	1419	0.156	0.3	0.156	0.3

Proficiency Cycle Statistics

Level	Lower Limit	Upper Limit	Mean (Average)	Std Dev	N	Number Out of Range	
						1st Iter	2nd Iter
A	0.108	0.126	0.117	0.003	124	2	2
B	0.074	0.092	0.083	0.003	134	0	0
C	0.243	0.285	0.264	0.007	126	2	2
D	0.143	0.167	0.155	0.004	126	0	0
E	0.063	0.075	0.069	0.002	128	0	0

Notes: Z score is your reported analytical result compared to the mean in terms of the standard deviation, calculated as (Result-Mean)/StdDev.
The parameter n is the number of results reported which are used to calculate the second iteration mean and standard deviation.

Florida Department of Law Enforcement

Alcohol Testing Program

BLOOD ALCOHOL PROFICIENCY INITIAL TEST OUTCOME REPORT

Proficiency Cycle 18C1

Receive Results By: 4/27/2018

Participation Number 15126

Method GC

Analyst Name Reidy, Lisa

Your 18C1 proficiency test outcome is Satisfactory

Evaluation Procedure

First iteration: For each level, the qualified results reported by participating analysts and reference labs are pooled, the mean, standard deviation and acceptable range are calculated using truncation, and results outside the acceptable range are excluded from the second iteration.

Second iteration: The mean, standard deviation and acceptable range are recalculated using truncation, every analyst's qualified results are compared to the recalculated acceptable range, and every analyst is assigned an outcome for the proficiency cycle. All analysts with Results Outside Acceptable Range receive retest samples. The retest results are compared to the acceptable range established by the initial test and the retested analyst's outcome for the proficiency cycle is assigned based on the second comparison.

Type Test	Level ID	Vial Number	Results #1 Reported (g/dL)	#1 Z Score	Results #2 Reported (g/dL)	#2 Z Score
Initial	A	1117	0.117	0.0	0.118	0.3
Initial	B	1223	0.084	0.3	0.083	0.0

Proficiency Cycle Statistics

Level	Lower Limit	Upper Limit	Mean (Average)	Std Dev	N	Number Out of Range	
						1st Iter	2nd Iter
A	0.108	0.126	0.117	0.003	124	2	2
B	0.074	0.092	0.083	0.003	134	0	0
C	0.243	0.285	0.264	0.007	126	2	2
D	0.143	0.167	0.155	0.004	126	0	0
E	0.063	0.075	0.069	0.002	128	0	0

Notes: Z score is your reported analytical result compared to the mean in terms of the standard deviation, calculated as (Result-Mean)/StdDev.
The parameter n is the number of results reported which are used to calculate the second iteration mean and standard deviation.

Florida Department of Law Enforcement

Alcohol Testing Program

BLOOD ALCOHOL PROFICIENCY INITIAL TEST OUTCOME REPORT

Proficiency Cycle 18C1

Receive Results By: 4/27/2018

Participation Number 15299

Method GC

Analyst Name Reidy, Lisa

Your 18C1 proficiency test outcome is: **Satisfactory**

Evaluation Procedure

First iteration: For each level, the qualified results reported by participating analysts and reference labs are pooled, the mean, standard deviation and acceptable range are calculated using truncation, and results outside the acceptable range are excluded from the second iteration.

Second iteration: The mean, standard deviation and acceptable range are recalculated using truncation, every analyst's qualified results are compared to the recalculated acceptable range, and every analyst is assigned an outcome for the proficiency cycle. All analysts with Results Outside Acceptable Range receive retest samples. The retest results are compared to the acceptable range established by the initial test and the retested analyst's outcome for the proficiency cycle is assigned based on the second comparison.

Type Test	Level ID	Vial Number	Results #1 Reported (g/dL)	#1 Z Score	Results #2 Reported (g/dL)	#2 Z Score
Initial	A	1162	0.117	0.0	0.115	-0.7
Initial	B	1264	0.084	0.3	0.081	-0.7
Initial	C	1362	0.262	-0.1	0.264	0.1
Initial	D	1461	0.155	0.0	0.153	-0.5
Initial	E	1561	0.068	-0.5	0.067	-1.0

Proficiency Cycle Statistics

Level	Lower Limit	Upper Limit	Mean (Average)	Std Dev	N	Number Out of Range	
						1st Iter	2nd Iter
A	0.108	0.126	0.117	0.003	124	2	2
B	0.074	0.092	0.083	0.003	134	0	0
C	0.243	0.285	0.264	0.007	126	2	2
D	0.143	0.167	0.155	0.004	126	0	0
E	0.063	0.075	0.069	0.002	130	0	0

Notes: Z score is your reported analytical result compared to the mean in terms of the standard deviation, calculated as (Result-Mean)/StdDev.
The parameter n is the number of results reported which are used to calculate the second iteration mean and standard deviation.

Florida Department of Law Enforcement

Alcohol Testing Program

BLOOD ALCOHOL PROFICIENCY INITIAL TEST OUTCOME REPORT

Proficiency Cycle 18C1

Receive Results By: 4/27/2018

Participation Number 15280

Method GC

Analyst Name Richter, Stephanie

Your 18C1 proficiency test outcome is: **Satisfactory**

Evaluation Procedure

First iteration: For each level, the qualified results reported by participating analysts and reference labs are pooled, the mean, standard deviation and acceptable range are calculated using truncation, and results outside the acceptable range are excluded from the second iteration.

Second iteration: The mean, standard deviation and acceptable range are recalculated using truncation, every analyst's qualified results are compared to the recalculated acceptable range, and every analyst is assigned an outcome for the proficiency cycle. All analysts with Results Outside Acceptable Range receive retest samples. The retest results are compared to the acceptable range established by the initial test and the retested analyst's outcome for the proficiency cycle is assigned based on the second comparison.

Type Test	Level ID	Vial Number	Results #1 Reported (g/dL)	#1 Z Score	Results #2 Reported (g/dL)	#2 Z Score
Initial	A	1138	0.119	0.7	0.118	0.3
Initial	B	1240	0.084	0.3	0.082	-0.3
Initial	C	1338	0.262	-0.1	0.261	-0.3
Initial	D	1437	0.154	-0.3	0.157	0.5
Initial	E	1537	0.074	2.5	0.073	2.0

Proficiency Cycle Statistics

Level	Lower Limit	Upper Limit	Mean (Average)	Std Dev	N	Number Out of Range	
						1st Iter	2nd Iter
A	0.108	0.126	0.117	0.003	124	2	2
B	0.074	0.092	0.083	0.003	134	0	0
C	0.243	0.285	0.264	0.007	126	2	2
D	0.143	0.167	0.155	0.004	126	0	0
E	0.063	0.075	0.069	0.002	130	0	0

Notes: Z score is your reported analytical result compared to the mean in terms of the standard deviation, calculated as (Result-Mean)/StdDev.
The parameter n is the number of results reported which are used to calculate the second iteration mean and standard deviation.

Florida Department of Law Enforcement

Alcohol Testing Program

BLOOD ALCOHOL PROFICIENCY INITIAL TEST OUTCOME REPORT

Proficiency Cycle 18C1

Receive Results By: 4/27/2018

Participation Number 15264

Method GC

Analyst Name Rothrock, Tashiana

Your 18C1 proficiency test outcome is Satisfactory

Evaluation Procedure

First iteration: For each level, the qualified results reported by participating analysts and reference labs are pooled, the mean, standard deviation and acceptable range are calculated using truncation, and results outside the acceptable range are excluded from the second iteration.

Second iteration: The mean, standard deviation and acceptable range are recalculated using truncation, every analyst's qualified results are compared to the recalculated acceptable range, and every analyst is assigned an outcome for the proficiency cycle. All analysts with Results Outside Acceptable Range receive retest samples. The retest results are compared to the acceptable range established by the initial test and the retested analyst's outcome for the proficiency cycle is assigned based on the second comparison.

Type Test	Level ID	Vial Number	Results #1 Reported (g/dL)	#1 Z Score	Results #2 Reported (g/dL)	#2 Z Score
Initial	A	1118	0.121	1.3	0.120	1.0
Initial	E	1518	0.072	1.5	0.071	1.0

Proficiency Cycle Statistics

Level	Lower Limit	Upper Limit	Mean (Average)	Std Dev	N	Number Out of Range	
						1st Iter	2nd Iter
A	0.108	0.126	0.117	0.003	124	2	2
B	0.074	0.092	0.083	0.003	134	0	0
C	0.243	0.285	0.264	0.007	126	2	2
D	0.143	0.167	0.155	0.004	126	0	0
E	0.063	0.075	0.069	0.002	128	0	0

Notes: Z score is your reported analytical result compared to the mean in terms of the standard deviation, calculated as (Result-Mean)/StdDev.

The parameter n is the number of results reported which are used to calculate the second iteration mean and standard deviation.

Florida Department of Law Enforcement

Alcohol Testing Program

BLOOD ALCOHOL PROFICIENCY INITIAL TEST OUTCOME REPORT

Proficiency Cycle 18C1

Receive Results By: 4/27/2018

Participation Number 15265

Method GC

Analyst Name Rothrock, Tashiana

Your 18C1 proficiency test outcome is Satisfactory

Evaluation Procedure

First iteration: For each level, the qualified results reported by participating analysts and reference labs are pooled, the mean, standard deviation and acceptable range are calculated using truncation, and results outside the acceptable range are excluded from the second iteration.

Second iteration: The mean, standard deviation and acceptable range are recalculated using truncation, every analyst's qualified results are compared to the recalculated acceptable range, and every analyst is assigned an outcome for the proficiency cycle. All analysts with Results Outside Acceptable Range receive retest samples. The retest results are compared to the acceptable range established by the initial test and the retested analyst's outcome for the proficiency cycle is assigned based on the second comparison.

Type Test	Level ID	Vial Number	Results #1 Reported (g/dL)	#1 Z Score	Results #2 Reported (g/dL)	#2 Z Score
Initial	B	1224	0.085	0.7	0.085	0.7
Initial	C	1314	0.264	0.1	0.266	0.4

Proficiency Cycle Statistics

Level	Lower Limit	Upper Limit	Mean (Average)	Std Dev	N	Number Out of Range	
						1st Iter	2nd Iter
A	0.108	0.126	0.117	0.003	124	2	2
B	0.074	0.092	0.083	0.003	134	0	0
C	0.243	0.285	0.264	0.007	126	2	2
D	0.143	0.167	0.155	0.004	126	0	0
E	0.063	0.075	0.069	0.002	128	0	0

Notes: Z score is your reported analytical result compared to the mean in terms of the standard deviation, calculated as (Result-Mean)/StdDev.
The parameter n is the number of results reported which are used to calculate the second iteration mean and standard deviation.

Florida Department of Law Enforcement

Alcohol Testing Program

BLOOD ALCOHOL PROFICIENCY INITIAL TEST OUTCOME REPORT

Proficiency Cycle 18C1

Receive Results By: 4/27/2018

Participation Number 15283

Method GC

Analyst Name Rumberger, Lauren

Your 18C1 proficiency test outcome is: **Satisfactory**

Evaluation Procedure

First iteration: For each level, the qualified results reported by participating analysts and reference labs are pooled, the mean, standard deviation and acceptable range are calculated using truncation, and results outside the acceptable range are excluded from the second iteration.

Second iteration: The mean, standard deviation and acceptable range are recalculated using truncation, every analyst's qualified results are compared to the recalculated acceptable range, and every analyst is assigned an outcome for the proficiency cycle. All analysts with Results Outside Acceptable Range receive retest samples. The retest results are compared to the acceptable range established by the initial test and the retested analyst's outcome for the proficiency cycle is assigned based on the second comparison.

Type Test	Level ID	Vial Number	Results #1 Reported (g/dL)	#1 Z Score	Results #2 Reported (g/dL)	#2 Z Score
Initial	A	1147	0.118	0.3	0.117	0.0
Initial	B	1249	0.085	0.7	0.082	-0.3
Initial	C	1347	0.263	0.0	0.256	-1.0
Initial	D	1446	0.158	0.8	0.152	-0.8
Initial	E	1546	0.070	0.5	0.069	0.0

Proficiency Cycle Statistics

Level	Lower Limit	Upper Limit	Mean (Average)	Std Dev	N	Number Out of Range	
						1st Iter	2nd Iter
A	0.108	0.126	0.117	0.003	124	2	2
B	0.074	0.092	0.083	0.003	134	0	0
C	0.243	0.285	0.264	0.007	126	2	2
D	0.143	0.167	0.155	0.004	126	0	0
E	0.063	0.075	0.069	0.002	130	0	0

Notes: Z score is your reported analytical result compared to the mean in terms of the standard deviation, calculated as (Result-Mean)/StdDev.
The parameter n is the number of results reported which are used to calculate the second iteration mean and standard deviation.

Florida Department of Law Enforcement

Alcohol Testing Program

BLOOD ALCOHOL PROFICIENCY INITIAL TEST OUTCOME REPORT

Proficiency Cycle 18C1

Receive Results By: 4/27/2018

Participation Number 15271

Method GC

Analyst Name Sanders, Leeona

Your 18C1 proficiency test outcome is Satisfactory

Evaluation Procedure

First iteration: For each level, the qualified results reported by participating analysts and reference labs are pooled, the mean, standard deviation and acceptable range are calculated using truncation, and results outside the acceptable range are excluded from the second iteration.

Second iteration: The mean, standard deviation and acceptable range are recalculated using truncation, every analyst's qualified results are compared to the recalculated acceptable range, and every analyst is assigned an outcome for the proficiency cycle. All analysts with Results Outside Acceptable Range receive retest samples. The retest results are compared to the acceptable range established by the initial test and the retested analyst's outcome for the proficiency cycle is assigned based on the second comparison.

Type Test	Level ID	Vial Number	Results #1 Reported (g/dL)	#1 Z Score	Results #2 Reported (g/dL)	#2 Z Score
Initial	A	1119	0.118	0.3	0.118	0.3
Initial	C	1315	0.265	0.3	0.267	0.6

Proficiency Cycle Statistics

Level	Lower Limit	Upper Limit	Mean (Average)	Std Dev	N	Number Out of Range	
						1st Iter	2nd Iter
A	0.108	0.126	0.117	0.003	124	2	2
B	0.074	0.092	0.083	0.003	134	0	0
C	0.243	0.285	0.264	0.007	126	2	2
D	0.143	0.167	0.155	0.004	126	0	0
E	0.063	0.075	0.069	0.002	128	0	0

Notes: Z score is your reported analytical result compared to the mean in terms of the standard deviation, calculated as (Result-Mean)/StdDev.
The parameter n is the number of results reported which are used to calculate the second iteration mean and standard deviation.

Florida Department of Law Enforcement

Alcohol Testing Program

BLOOD ALCOHOL PROFICIENCY INITIAL TEST OUTCOME REPORT

Proficiency Cycle 18C1

Receive Results By: 4/27/2018

Participation Number 15204

Method GC

Analyst Name Sanders (AA-4), Leeona

Your 18C1 proficiency test outcome is Satisfactory

Evaluation Procedure

First iteration: For each level, the qualified results reported by participating analysts and reference labs are pooled, the mean, standard deviation and acceptable range are calculated using truncation, and results outside the acceptable range are excluded from the second iteration.

Second iteration: The mean, standard deviation and acceptable range are recalculated using truncation, every analyst's qualified results are compared to the recalculated acceptable range, and every analyst is assigned an outcome for the proficiency cycle. All analysts with Results Outside Acceptable Range receive retest samples. The retest results are compared to the acceptable range established by the initial test and the retested analyst's outcome for the proficiency cycle is assigned based on the second comparison.

Type Test	Level ID	Vial Number	Results #1 Reported (g/dL)	#1 Z Score	Results #2 Reported (g/dL)	#2 Z Score
Initial	B	1225	0.083	0.0	0.083	0.0
Initial	D	1420	0.154	-0.3	0.154	-0.3

Proficiency Cycle Statistics

Level	Lower Limit	Upper Limit	Mean (Average)	Std Dev	N	Number Out of Range	
						1st Iter	2nd Iter
A	0.108	0.126	0.117	0.003	124	2	2
B	0.074	0.092	0.083	0.003	134	0	0
C	0.243	0.285	0.264	0.007	126	2	2
D	0.143	0.167	0.155	0.004	126	0	0
E	0.063	0.075	0.069	0.002	128	0	0

Notes: Z score is your reported analytical result compared to the mean in terms of the standard deviation, calculated as (Result-Mean)/StdDev.
The parameter n is the number of results reported which are used to calculate the second iteration mean and standard deviation.

Florida Department of Law Enforcement

Alcohol Testing Program

BLOOD ALCOHOL PROFICIENCY INITIAL TEST OUTCOME REPORT

Proficiency Cycle 18C1

Receive Results By: 4/27/2018

Participation Number 15234

Method GC

Analyst Name Scott (HS108), Tyler

Your 18C1 proficiency test outcome is Satisfactory

Evaluation Procedure

First iteration: For each level, the qualified results reported by participating analysts and reference labs are pooled, the mean, standard deviation and acceptable range are calculated using truncation, and results outside the acceptable range are excluded from the second iteration.

Second iteration: The mean, standard deviation and acceptable range are recalculated using truncation, every analyst's qualified results are compared to the recalculated acceptable range, and every analyst is assigned an outcome for the proficiency cycle. All analysts with Results Outside Acceptable Range receive retest samples. The retest results are compared to the acceptable range established by the initial test and the retested analyst's outcome for the proficiency cycle is assigned based on the second comparison.

Type Test	Level ID	Vial Number	Results #1 Reported (g/dL)	#1 Z Score	Results #2 Reported (g/dL)	#2 Z Score
Initial	B	1226	0.084	0.3	0.084	0.3
Initial	C	1316	0.262	-0.1	0.263	0.0

Proficiency Cycle Statistics

Level	Lower Limit	Upper Limit	Mean (Average)	Std Dev	N	Number Out of Range	
						1st Iter	2nd Iter
A	0.108	0.126	0.117	0.003	124	2	2
B	0.074	0.092	0.083	0.003	134	0	0
C	0.243	0.285	0.264	0.007	126	2	2
D	0.143	0.167	0.155	0.004	126	0	0
E	0.063	0.075	0.069	0.002	128	0	0

Notes: Z score is your reported analytical result compared to the mean in terms of the standard deviation, calculated as (Result-Mean)/StdDev.
The parameter n is the number of results reported which are used to calculate the second iteration mean and standard deviation.

Florida Department of Law Enforcement

Alcohol Testing Program

BLOOD ALCOHOL PROFICIENCY INITIAL TEST OUTCOME REPORT

Proficiency Cycle 18C1

Receive Results By: 4/27/2018

Participation Number 15233

Method GC

Analyst Name Scott (HS110), Tyler

Your 18C1 proficiency test outcome is Satisfactory

Evaluation Procedure

First iteration: For each level, the qualified results reported by participating analysts and reference labs are pooled, the mean, standard deviation and acceptable range are calculated using truncation, and results outside the acceptable range are excluded from the second iteration.

Second iteration: The mean, standard deviation and acceptable range are recalculated using truncation, every analyst's qualified results are compared to the recalculated acceptable range, and every analyst is assigned an outcome for the proficiency cycle. All analysts with Results Outside Acceptable Range receive retest samples. The retest results are compared to the acceptable range established by the initial test and the retested analyst's outcome for the proficiency cycle is assigned based on the second comparison.

Type Test	Level ID	Vial Number	Results #1 Reported (g/dL)	#1 Z Score	Results #2 Reported (g/dL)	#2 Z Score
Initial	A	1120	0.117	0.0	0.116	-0.3
Initial	D	1421	0.158	0.8	0.156	0.3

Proficiency Cycle Statistics

Level	Lower Limit	Upper Limit	Mean (Average)	Std Dev	N	Number Out of Range	
						1st Iter	2nd Iter
A	0.108	0.126	0.117	0.003	124	2	2
B	0.074	0.092	0.083	0.003	134	0	0
C	0.243	0.285	0.264	0.007	126	2	2
D	0.143	0.167	0.155	0.004	126	0	0
E	0.063	0.075	0.069	0.002	128	0	0

Notes: Z score is your reported analytical result compared to the mean in terms of the standard deviation, calculated as (Result-Mean)/StdDev.
The parameter n is the number of results reported which are used to calculate the second iteration mean and standard deviation.

Florida Department of Law Enforcement

Alcohol Testing Program

BLOOD ALCOHOL PROFICIENCY INITIAL TEST OUTCOME REPORT

Proficiency Cycle 18C1

Receive Results By: 4/27/2018

Participation Number 15213

Method GC

Analyst Name Seagle (HS108), Carol

Your 18C1 proficiency test outcome is Satisfactory

Evaluation Procedure

First iteration: For each level, the qualified results reported by participating analysts and reference labs are pooled, the mean, standard deviation and acceptable range are calculated using truncation, and results outside the acceptable range are excluded from the second iteration.

Second iteration: The mean, standard deviation and acceptable range are recalculated using truncation, every analyst's qualified results are compared to the recalculated acceptable range, and every analyst is assigned an outcome for the proficiency cycle. All analysts with Results Outside Acceptable Range receive retest samples. The retest results are compared to the acceptable range established by the initial test and the retested analyst's outcome for the proficiency cycle is assigned based on the second comparison.

Type Test	Level ID	Vial Number	Results #1 Reported (g/dL)	#1 Z Score	Results #2 Reported (g/dL)	#2 Z Score
Initial	B	1227	0.085	0.7	0.085	0.7
Initial	D	1422	0.155	0.0	0.155	0.0

Proficiency Cycle Statistics

Level	Lower Limit	Upper Limit	Mean (Average)	Std Dev	N	Number Out of Range	
						1st Iter	2nd Iter
A	0.108	0.126	0.117	0.003	124	2	2
B	0.074	0.092	0.083	0.003	134	0	0
C	0.243	0.285	0.264	0.007	126	2	2
D	0.143	0.167	0.155	0.004	126	0	0
E	0.063	0.075	0.069	0.002	128	0	0

Notes: Z score is your reported analytical result compared to the mean in terms of the standard deviation, calculated as (Result-Mean)/StdDev.
The parameter n is the number of results reported which are used to calculate the second iteration mean and standard deviation.

Florida Department of Law Enforcement

Alcohol Testing Program

BLOOD ALCOHOL PROFICIENCY INITIAL TEST OUTCOME REPORT

Proficiency Cycle 18C1

Receive Results By: 4/27/2018

Participation Number 15124

Method GC

Analyst Name Seagle (HS110), Carol

Your 18C1 proficiency test outcome is Satisfactory

Evaluation Procedure

First iteration: For each level, the qualified results reported by participating analysts and reference labs are pooled, the mean, standard deviation and acceptable range are calculated using truncation, and results outside the acceptable range are excluded from the second iteration.

Second iteration: The mean, standard deviation and acceptable range are recalculated using truncation, every analyst's qualified results are compared to the recalculated acceptable range, and every analyst is assigned an outcome for the proficiency cycle. All analysts with Results Outside Acceptable Range receive retest samples. The retest results are compared to the acceptable range established by the initial test and the retested analyst's outcome for the proficiency cycle is assigned based on the second comparison.

Type Test	Level ID	Vial Number	Results #1 Reported (g/dL)	#1 Z Score	Results #2 Reported (g/dL)	#2 Z Score
Initial	A	1121	0.117	0.0	0.117	0.0
Initial	C	1317	0.266	0.4	0.266	0.4

Proficiency Cycle Statistics

Level	Lower Limit	Upper Limit	Mean (Average)	Std Dev	N	Number Out of Range	
						1st Iter	2nd Iter
A	0.108	0.126	0.117	0.003	124	2	2
B	0.074	0.092	0.083	0.003	134	0	0
C	0.243	0.285	0.264	0.007	126	2	2
D	0.143	0.167	0.155	0.004	126	0	0
E	0.063	0.075	0.069	0.002	128	0	0

Notes: Z score is your reported analytical result compared to the mean in terms of the standard deviation, calculated as (Result-Mean)/StdDev.
The parameter n is the number of results reported which are used to calculate the second iteration mean and standard deviation.

Florida Department of Law Enforcement

Alcohol Testing Program

BLOOD ALCOHOL PROFICIENCY INITIAL TEST OUTCOME REPORT

Proficiency Cycle 18C1

Receive Results By: 4/27/2018

Participation Number 15228

Method GC

Analyst Name Seither, Joshua

Your 18C1 proficiency test outcome is Satisfactory

Evaluation Procedure

First iteration: For each level, the qualified results reported by participating analysts and reference labs are pooled, the mean, standard deviation and acceptable range are calculated using truncation, and results outside the acceptable range are excluded from the second iteration.

Second iteration: The mean, standard deviation and acceptable range are recalculated using truncation, every analyst's qualified results are compared to the recalculated acceptable range, and every analyst is assigned an outcome for the proficiency cycle. All analysts with Results Outside Acceptable Range receive retest samples. The retest results are compared to the acceptable range established by the initial test and the retested analyst's outcome for the proficiency cycle is assigned based on the second comparison.

Type Test	Level ID	Vial Number	Results #1 Reported (g/dL)	#1 Z Score	Results #2 Reported (g/dL)	#2 Z Score
Initial	C	1318	0.261	-0.3	0.258	-0.7
Initial	E	1519	0.068	-0.5	0.067	-1.0

Proficiency Cycle Statistics

Level	Lower Limit	Upper Limit	Mean (Average)	Std Dev	N	Number Out of Range	
						1st Iter	2nd Iter
A	0.108	0.126	0.117	0.003	124	2	2
B	0.074	0.092	0.083	0.003	134	0	0
C	0.243	0.285	0.264	0.007	126	2	2
D	0.143	0.167	0.155	0.004	126	0	0
E	0.063	0.075	0.069	0.002	128	0	0

Notes: Z score is your reported analytical result compared to the mean in terms of the standard deviation, calculated as (Result-Mean)/StdDev.
The parameter n is the number of results reported which are used to calculate the second iteration mean and standard deviation.

Florida Department of Law Enforcement

Alcohol Testing Program

BLOOD ALCOHOL PROFICIENCY INITIAL TEST OUTCOME REPORT

Proficiency Cycle 18C1

Receive Results By: 4/27/2018

Participation Number 15300

Method GC

Analyst Name Seither, Joshua

Your 18C1 proficiency test outcome is: **Satisfactory**

Evaluation Procedure

First iteration: For each level, the qualified results reported by participating analysts and reference labs are pooled, the mean, standard deviation and acceptable range are calculated using truncation, and results outside the acceptable range are excluded from the second iteration.

Second iteration: The mean, standard deviation and acceptable range are recalculated using truncation, every analyst's qualified results are compared to the recalculated acceptable range, and every analyst is assigned an outcome for the proficiency cycle. All analysts with Results Outside Acceptable Range receive retest samples. The retest results are compared to the acceptable range established by the initial test and the retested analyst's outcome for the proficiency cycle is assigned based on the second comparison.

Type Test	Level ID	Vial Number	Results #1 Reported (g/dL)	#1 Z Score	Results #2 Reported (g/dL)	#2 Z Score
Initial	A	1164	0.116	-0.3	0.115	-0.7
Initial	B	1266	0.083	0.0	0.081	-0.7
Initial	C	1364	0.266	0.4	0.262	-0.1
Initial	D	1463	0.152	-0.8	0.152	-0.8
Initial	E	1563	0.068	-0.5	0.067	-1.0

Proficiency Cycle Statistics

Level	Lower Limit	Upper Limit	Mean (Average)	Std Dev	N	Number Out of Range	
						1st Iter	2nd Iter
A	0.108	0.126	0.117	0.003	124	2	2
B	0.074	0.092	0.083	0.003	134	0	0
C	0.243	0.285	0.264	0.007	126	2	2
D	0.143	0.167	0.155	0.004	126	0	0
E	0.063	0.075	0.069	0.002	130	0	0

Notes: Z score is your reported analytical result compared to the mean in terms of the standard deviation, calculated as (Result-Mean)/StdDev.
The parameter n is the number of results reported which are used to calculate the second iteration mean and standard deviation.

Florida Department of Law Enforcement

Alcohol Testing Program

BLOOD ALCOHOL PROFICIENCY INITIAL TEST OUTCOME REPORT

Proficiency Cycle 18C1

Receive Results By: 4/27/2018

Participation Number 15121

Method GC

Analyst Name Shan, Xiaoqin

Your 18C1 proficiency test outcome is Satisfactory

Evaluation Procedure

First iteration: For each level, the qualified results reported by participating analysts and reference labs are pooled, the mean, standard deviation and acceptable range are calculated using truncation, and results outside the acceptable range are excluded from the second iteration.

Second iteration: The mean, standard deviation and acceptable range are recalculated using truncation, every analyst's qualified results are compared to the recalculated acceptable range, and every analyst is assigned an outcome for the proficiency cycle. All analysts with Results Outside Acceptable Range receive retest samples. The retest results are compared to the acceptable range established by the initial test and the retested analyst's outcome for the proficiency cycle is assigned based on the second comparison.

Type Test	Level ID	Vial Number	Results #1 Reported (g/dL)	#1 Z Score	Results #2 Reported (g/dL)	#2 Z Score
Initial	A	1122	0.116	-0.3	0.116	-0.3
Initial	B	1228	0.083	0.0	0.083	0.0

Proficiency Cycle Statistics

Level	Lower Limit	Upper Limit	Mean (Average)	Std Dev	N	Number Out of Range	
						1st Iter	2nd Iter
A	0.108	0.126	0.117	0.003	124	2	2
B	0.074	0.092	0.083	0.003	134	0	0
C	0.243	0.285	0.264	0.007	126	2	2
D	0.143	0.167	0.155	0.004	126	0	0
E	0.063	0.075	0.069	0.002	128	0	0

Notes: Z score is your reported analytical result compared to the mean in terms of the standard deviation, calculated as (Result-Mean)/StdDev.
The parameter n is the number of results reported which are used to calculate the second iteration mean and standard deviation.

Florida Department of Law Enforcement

Alcohol Testing Program

BLOOD ALCOHOL PROFICIENCY INITIAL TEST OUTCOME REPORT

Proficiency Cycle 18C1

Receive Results By: 4/27/2018

Participation Number 15227

Method GC

Analyst Name Shanks, Christopher

Your 18C1 proficiency test outcome is Satisfactory

Evaluation Procedure

First iteration: For each level, the qualified results reported by participating analysts and reference labs are pooled, the mean, standard deviation and acceptable range are calculated using truncation, and results outside the acceptable range are excluded from the second iteration.

Second iteration: The mean, standard deviation and acceptable range are recalculated using truncation, every analyst's qualified results are compared to the recalculated acceptable range, and every analyst is assigned an outcome for the proficiency cycle. All analysts with Results Outside Acceptable Range receive retest samples. The retest results are compared to the acceptable range established by the initial test and the retested analyst's outcome for the proficiency cycle is assigned based on the second comparison.

Type Test	Level ID	Vial Number	Results #1 Reported (g/dL)	#1 Z Score	Results #2 Reported (g/dL)	#2 Z Score
Initial	A	1123	0.119	0.7	0.118	0.3
Initial	C	1319	0.266	0.4	0.269	0.9

Proficiency Cycle Statistics

Level	Lower Limit	Upper Limit	Mean (Average)	Std Dev	N	Number Out of Range	
						1st Iter	2nd Iter
A	0.108	0.126	0.117	0.003	124	2	2
B	0.074	0.092	0.083	0.003	134	0	0
C	0.243	0.285	0.264	0.007	126	2	2
D	0.143	0.167	0.155	0.004	126	0	0
E	0.063	0.075	0.069	0.002	128	0	0

Notes: Z score is your reported analytical result compared to the mean in terms of the standard deviation, calculated as (Result-Mean)/StdDev.
The parameter n is the number of results reported which are used to calculate the second iteration mean and standard deviation.

Florida Department of Law Enforcement

Alcohol Testing Program

BLOOD ALCOHOL PROFICIENCY INITIAL TEST OUTCOME REPORT

Proficiency Cycle 18C1

Receive Results By: 4/27/2018

Participation Number 15301

Method GC

Analyst Name Shanks, Christopher

Your 18C1 proficiency test outcome is: **Satisfactory**

Evaluation Procedure

First iteration: For each level, the qualified results reported by participating analysts and reference labs are pooled, the mean, standard deviation and acceptable range are calculated using truncation, and results outside the acceptable range are excluded from the second iteration.

Second iteration: The mean, standard deviation and acceptable range are recalculated using truncation, every analyst's qualified results are compared to the recalculated acceptable range, and every analyst is assigned an outcome for the proficiency cycle. All analysts with Results Outside Acceptable Range receive retest samples. The retest results are compared to the acceptable range established by the initial test and the retested analyst's outcome for the proficiency cycle is assigned based on the second comparison.

Type Test	Level ID	Vial Number	Results #1 Reported (g/dL)	#1 Z Score	Results #2 Reported (g/dL)	#2 Z Score
Initial	A	1163	0.124	2.3	0.117	0.0
Initial	B	1265	0.083	0.0	0.083	0.0
Initial	C	1363	0.267	0.6	0.264	0.1
Initial	D	1462	0.157	0.5	0.157	0.5
Initial	E	1562	0.069	0.0	0.069	0.0

Proficiency Cycle Statistics

Level	Lower Limit	Upper Limit	Mean (Average)	Std Dev	N	Number Out of Range	
						1st Iter	2nd Iter
A	0.108	0.126	0.117	0.003	124	2	2
B	0.074	0.092	0.083	0.003	134	0	0
C	0.243	0.285	0.264	0.007	126	2	2
D	0.143	0.167	0.155	0.004	126	0	0
E	0.063	0.075	0.069	0.002	130	0	0

Notes: Z score is your reported analytical result compared to the mean in terms of the standard deviation, calculated as (Result-Mean)/StdDev.
The parameter n is the number of results reported which are used to calculate the second iteration mean and standard deviation.

Florida Department of Law Enforcement

Alcohol Testing Program

BLOOD ALCOHOL PROFICIENCY INITIAL TEST OUTCOME REPORT

Proficiency Cycle 18C1

Receive Results By: 4/27/2018

Participation Number 15268

Method GC

Analyst Name Shaw, Kristie

Your 18C1 proficiency test outcome is Satisfactory

Evaluation Procedure

First iteration: For each level, the qualified results reported by participating analysts and reference labs are pooled, the mean, standard deviation and acceptable range are calculated using truncation, and results outside the acceptable range are excluded from the second iteration.

Second iteration: The mean, standard deviation and acceptable range are recalculated using truncation, every analyst's qualified results are compared to the recalculated acceptable range, and every analyst is assigned an outcome for the proficiency cycle. All analysts with Results Outside Acceptable Range receive retest samples. The retest results are compared to the acceptable range established by the initial test and the retested analyst's outcome for the proficiency cycle is assigned based on the second comparison.

Type Test	Level ID	Vial Number	Results #1 Reported (g/dL)	#1 Z Score	Results #2 Reported (g/dL)	#2 Z Score
Initial	C	1320	0.261	-0.3	0.264	0.1
Initial	D	1423	0.156	0.3	0.155	0.0

Proficiency Cycle Statistics

Level	Lower Limit	Upper Limit	Mean (Average)	Std Dev	N	Number Out of Range	
						1st Iter	2nd Iter
A	0.108	0.126	0.117	0.003	124	2	2
B	0.074	0.092	0.083	0.003	134	0	0
C	0.243	0.285	0.264	0.007	126	2	2
D	0.143	0.167	0.155	0.004	126	0	0
E	0.063	0.075	0.069	0.002	128	0	0

Notes: Z score is your reported analytical result compared to the mean in terms of the standard deviation, calculated as (Result-Mean)/StdDev.

The parameter n is the number of results reported which are used to calculate the second iteration mean and standard deviation.

Florida Department of Law Enforcement

Alcohol Testing Program

BLOOD ALCOHOL PROFICIENCY INITIAL TEST OUTCOME REPORT

Proficiency Cycle 18C1

Receive Results By: 4/27/2018

Participation Number 15173

Method GC

Analyst Name Shaw (AA-4), Kristie

Your 18C1 proficiency test outcome is Satisfactory

Evaluation Procedure

First iteration: For each level, the qualified results reported by participating analysts and reference labs are pooled, the mean, standard deviation and acceptable range are calculated using truncation, and results outside the acceptable range are excluded from the second iteration.

Second iteration: The mean, standard deviation and acceptable range are recalculated using truncation, every analyst's qualified results are compared to the recalculated acceptable range, and every analyst is assigned an outcome for the proficiency cycle. All analysts with Results Outside Acceptable Range receive retest samples. The retest results are compared to the acceptable range established by the initial test and the retested analyst's outcome for the proficiency cycle is assigned based on the second comparison.

Type Test	Level ID	Vial Number	Results #1 Reported (g/dL)	#1 Z Score	Results #2 Reported (g/dL)	#2 Z Score
Initial	B	1229	0.084	0.3	0.084	0.3
Initial	E	1521	0.069	0.0	0.069	0.0

Proficiency Cycle Statistics

Level	Lower Limit	Upper Limit	Mean (Average)	Std Dev	N	Number Out of Range	
						1st Iter	2nd Iter
A	0.108	0.126	0.117	0.003	124	2	2
B	0.074	0.092	0.083	0.003	134	0	0
C	0.243	0.285	0.264	0.007	126	2	2
D	0.143	0.167	0.155	0.004	126	0	0
E	0.063	0.075	0.069	0.002	128	0	0

Notes: Z score is your reported analytical result compared to the mean in terms of the standard deviation, calculated as (Result-Mean)/StdDev.

The parameter n is the number of results reported which are used to calculate the second iteration mean and standard deviation.

Florida Department of Law Enforcement

Alcohol Testing Program

BLOOD ALCOHOL PROFICIENCY INITIAL TEST OUTCOME REPORT

Proficiency Cycle 18C1

Receive Results By: 4/27/2018

Participation Number 15193

Method GC

Analyst Name Shoff, Elisa

Your 18C1 proficiency test outcome is Satisfactory

Evaluation Procedure

First iteration: For each level, the qualified results reported by participating analysts and reference labs are pooled, the mean, standard deviation and acceptable range are calculated using truncation, and results outside the acceptable range are excluded from the second iteration.

Second iteration: The mean, standard deviation and acceptable range are recalculated using truncation, every analyst's qualified results are compared to the recalculated acceptable range, and every analyst is assigned an outcome for the proficiency cycle. All analysts with Results Outside Acceptable Range receive retest samples. The retest results are compared to the acceptable range established by the initial test and the retested analyst's outcome for the proficiency cycle is assigned based on the second comparison.

Type Test	Level ID	Vial Number	Results #1 Reported (g/dL)	#1 Z Score	Results #2 Reported (g/dL)	#2 Z Score
Initial	C	1321	0.253	-1.4	0.253	-1.4
Initial	E	1522	0.066	-1.5	0.066	-1.5

Proficiency Cycle Statistics

Level	Lower Limit	Upper Limit	Mean (Average)	Std Dev	N	Number Out of Range	
						1st Iter	2nd Iter
A	0.108	0.126	0.117	0.003	124	2	2
B	0.074	0.092	0.083	0.003	134	0	0
C	0.243	0.285	0.264	0.007	126	2	2
D	0.143	0.167	0.155	0.004	126	0	0
E	0.063	0.075	0.069	0.002	128	0	0

Notes: Z score is your reported analytical result compared to the mean in terms of the standard deviation, calculated as (Result-Mean)/StdDev.
The parameter n is the number of results reported which are used to calculate the second iteration mean and standard deviation.

Florida Department of Law Enforcement

Alcohol Testing Program

BLOOD ALCOHOL PROFICIENCY INITIAL TEST OUTCOME REPORT

Proficiency Cycle 18C1

Receive Results By: 4/27/2018

Participation Number 15247

Method GC

Analyst Name Smith, Trisha

Your 18C1 proficiency test outcome is Satisfactory

Evaluation Procedure

First iteration: For each level, the qualified results reported by participating analysts and reference labs are pooled, the mean, standard deviation and acceptable range are calculated using truncation, and results outside the acceptable range are excluded from the second iteration.

Second iteration: The mean, standard deviation and acceptable range are recalculated using truncation, every analyst's qualified results are compared to the recalculated acceptable range, and every analyst is assigned an outcome for the proficiency cycle. All analysts with Results Outside Acceptable Range receive retest samples. The retest results are compared to the acceptable range established by the initial test and the retested analyst's outcome for the proficiency cycle is assigned based on the second comparison.

Type Test	Level ID	Vial Number	Results #1 Reported (g/dL)	#1 Z Score	Results #2 Reported (g/dL)	#2 Z Score
Initial	A	1124	0.118	0.3	0.120	1.0
Initial	D	1424	0.156	0.3	0.154	-0.3

Proficiency Cycle Statistics

Level	Lower Limit	Upper Limit	Mean (Average)	Std Dev	N	Number Out of Range	
						1st Iter	2nd Iter
A	0.108	0.126	0.117	0.003	124	2	2
B	0.074	0.092	0.083	0.003	134	0	0
C	0.243	0.285	0.264	0.007	126	2	2
D	0.143	0.167	0.155	0.004	126	0	0
E	0.063	0.075	0.069	0.002	128	0	0

Notes: Z score is your reported analytical result compared to the mean in terms of the standard deviation, calculated as (Result-Mean)/StdDev.
The parameter n is the number of results reported which are used to calculate the second iteration mean and standard deviation.

Florida Department of Law Enforcement

Alcohol Testing Program

BLOOD ALCOHOL PROFICIENCY INITIAL TEST OUTCOME REPORT

Proficiency Cycle 18C1

Receive Results By: 4/27/2018

Participation Number 15252

Method GC

Analyst Name Snow, Jenna

Your 18C1 proficiency test outcome is Satisfactory

Evaluation Procedure

First iteration: For each level, the qualified results reported by participating analysts and reference labs are pooled, the mean, standard deviation and acceptable range are calculated using truncation, and results outside the acceptable range are excluded from the second iteration.

Second iteration: The mean, standard deviation and acceptable range are recalculated using truncation, every analyst's qualified results are compared to the recalculated acceptable range, and every analyst is assigned an outcome for the proficiency cycle. All analysts with Results Outside Acceptable Range receive retest samples. The retest results are compared to the acceptable range established by the initial test and the retested analyst's outcome for the proficiency cycle is assigned based on the second comparison.

Type Test	Level ID	Vial Number	Results #1 Reported (g/dL)	#1 Z Score	Results #2 Reported (g/dL)	#2 Z Score
Initial	B	1230	0.088	1.7	0.080	-1.0
Initial	C	1322	0.266	0.4	0.257	-0.9

Proficiency Cycle Statistics

Level	Lower Limit	Upper Limit	Mean (Average)	Std Dev	N	Number Out of Range	
						1st Iter	2nd Iter
A	0.108	0.126	0.117	0.003	124	2	2
B	0.074	0.092	0.083	0.003	134	0	0
C	0.243	0.285	0.264	0.007	126	2	2
D	0.143	0.167	0.155	0.004	126	0	0
E	0.063	0.075	0.069	0.002	128	0	0

Notes: Z score is your reported analytical result compared to the mean in terms of the standard deviation, calculated as (Result-Mean)/StdDev.
The parameter n is the number of results reported which are used to calculate the second iteration mean and standard deviation.

Florida Department of Law Enforcement

Alcohol Testing Program

BLOOD ALCOHOL PROFICIENCY INITIAL TEST OUTCOME REPORT

Proficiency Cycle 18C1

Receive Results By: 4/27/2018

Participation Number 15281

Method GC

Analyst Name Tarlo, Olivia

Your 18C1 proficiency test outcome is: **Satisfactory**

Evaluation Procedure

First iteration: For each level, the qualified results reported by participating analysts and reference labs are pooled, the mean, standard deviation and acceptable range are calculated using truncation, and results outside the acceptable range are excluded from the second iteration.

Second iteration: The mean, standard deviation and acceptable range are recalculated using truncation, every analyst's qualified results are compared to the recalculated acceptable range, and every analyst is assigned an outcome for the proficiency cycle. All analysts with Results Outside Acceptable Range receive retest samples. The retest results are compared to the acceptable range established by the initial test and the retested analyst's outcome for the proficiency cycle is assigned based on the second comparison.

Type Test	Level ID	Vial Number	Results #1 Reported (g/dL)	#1 Z Score	Results #2 Reported (g/dL)	#2 Z Score
Initial	A	1146	0.118	0.3	0.116	-0.3
Initial	B	1248	0.085	0.7	0.084	0.3
Initial	C	1346	0.263	0.0	0.263	0.0
Initial	D	1445	0.155	0.0	0.158	0.8
Initial	E	1545	0.070	0.5	0.069	0.0

Proficiency Cycle Statistics

Level	Lower Limit	Upper Limit	Mean (Average)	Std Dev	N	Number Out of Range	
						1st Iter	2nd Iter
A	0.108	0.126	0.117	0.003	124	2	2
B	0.074	0.092	0.083	0.003	134	0	0
C	0.243	0.285	0.264	0.007	126	2	2
D	0.143	0.167	0.155	0.004	126	0	0
E	0.063	0.075	0.069	0.002	130	0	0

Notes: Z score is your reported analytical result compared to the mean in terms of the standard deviation, calculated as (Result-Mean)/StdDev.
The parameter n is the number of results reported which are used to calculate the second iteration mean and standard deviation.

Florida Department of Law Enforcement

Alcohol Testing Program

BLOOD ALCOHOL PROFICIENCY INITIAL TEST OUTCOME REPORT

Proficiency Cycle 18C1

Receive Results By: 4/27/2018

Participation Number 15122

Method GC

Analyst Name Tiscione, Nicholas

Your 18C1 proficiency test outcome is Satisfactory

Evaluation Procedure

First iteration: For each level, the qualified results reported by participating analysts and reference labs are pooled, the mean, standard deviation and acceptable range are calculated using truncation, and results outside the acceptable range are excluded from the second iteration.

Second iteration: The mean, standard deviation and acceptable range are recalculated using truncation, every analyst's qualified results are compared to the recalculated acceptable range, and every analyst is assigned an outcome for the proficiency cycle. All analysts with Results Outside Acceptable Range receive retest samples. The retest results are compared to the acceptable range established by the initial test and the retested analyst's outcome for the proficiency cycle is assigned based on the second comparison.

Type Test	Level ID	Vial Number	Results #1 Reported (g/dL)	#1 Z Score	Results #2 Reported (g/dL)	#2 Z Score
Initial	C	1323	0.264	0.1	0.263	0.0
Initial	E	1523	0.070	0.5	0.069	0.0

Proficiency Cycle Statistics

Level	Lower Limit	Upper Limit	Mean (Average)	Std Dev	N	Number Out of Range	
						1st Iter	2nd Iter
A	0.108	0.126	0.117	0.003	124	2	2
B	0.074	0.092	0.083	0.003	134	0	0
C	0.243	0.285	0.264	0.007	126	2	2
D	0.143	0.167	0.155	0.004	126	0	0
E	0.063	0.075	0.069	0.002	128	0	0

Notes: Z score is your reported analytical result compared to the mean in terms of the standard deviation, calculated as (Result-Mean)/StdDev.
The parameter n is the number of results reported which are used to calculate the second iteration mean and standard deviation.

Florida Department of Law Enforcement

Alcohol Testing Program

BLOOD ALCOHOL PROFICIENCY INITIAL TEST OUTCOME REPORT

Proficiency Cycle 18C1

Receive Results By: 4/27/2018

Participation Number 15155

Method GC

Analyst Name Titko, Justine

Your 18C1 proficiency test outcome is Satisfactory

Evaluation Procedure

First iteration: For each level, the qualified results reported by participating analysts and reference labs are pooled, the mean, standard deviation and acceptable range are calculated using truncation, and results outside the acceptable range are excluded from the second iteration.

Second iteration: The mean, standard deviation and acceptable range are recalculated using truncation, every analyst's qualified results are compared to the recalculated acceptable range, and every analyst is assigned an outcome for the proficiency cycle. All analysts with Results Outside Acceptable Range receive retest samples. The retest results are compared to the acceptable range established by the initial test and the retested analyst's outcome for the proficiency cycle is assigned based on the second comparison.

Type Test	Level ID	Vial Number	Results #1 Reported (g/dL)	#1 Z Score	Results #2 Reported (g/dL)	#2 Z Score
Initial	A	1125	0.117	0.0	0.118	0.3
Initial	E	1524	0.068	-0.5	0.069	0.0

Proficiency Cycle Statistics

Level	Lower Limit	Upper Limit	Mean (Average)	Std Dev	N	Number Out of Range	
						1st Iter	2nd Iter
A	0.108	0.126	0.117	0.003	124	2	2
B	0.074	0.092	0.083	0.003	134	0	0
C	0.243	0.285	0.264	0.007	126	2	2
D	0.143	0.167	0.155	0.004	126	0	0
E	0.063	0.075	0.069	0.002	128	0	0

Notes: Z score is your reported analytical result compared to the mean in terms of the standard deviation, calculated as (Result-Mean)/StdDev.
The parameter n is the number of results reported which are used to calculate the second iteration mean and standard deviation.

Florida Department of Law Enforcement

Alcohol Testing Program

BLOOD ALCOHOL PROFICIENCY INITIAL TEST OUTCOME REPORT

Proficiency Cycle 18C1 Receive Results By: 4/27/2018 Participation Number 15060 Method GC
 Analyst Name Toth, Mary Lou

Your 18C1 proficiency test outcome is: **Satisfactory**

Evaluation Procedure

First iteration: For each level, the qualified results reported by participating analysts and reference labs are pooled, the mean, standard deviation and acceptable range are calculated using truncation, and results outside the acceptable range are excluded from the second iteration.

Second iteration: The mean, standard deviation and acceptable range are recalculated using truncation, every analyst's qualified results are compared to the recalculated acceptable range, and every analyst is assigned an outcome for the proficiency cycle. All analysts with Results Outside Acceptable Range receive retest samples. The retest results are compared to the acceptable range established by the initial test and the retested analyst's outcome for the proficiency cycle is assigned based on the second comparison.

Type Test	Level ID	Vial Number	Results #1 Reported (g/dL)	#1 Z Score	Results #2 Reported (g/dL)	#2 Z Score
Initial	A	1132	0.113	-1.3	0.115	-0.7
Initial	B	1234	0.078	-1.7	0.078	-1.7
Initial	C	1332	0.245	-2.6	0.254	-1.3
Initial	D	1430	0.145	-2.5	0.152	-0.8
Initial	E	1531	0.069	0.0	0.067	-1.0

Proficiency Cycle Statistics

Level	Lower Limit	Upper Limit	Mean (Average)	Std Dev	N	Number Out of Range	
						1st Iter	2nd Iter
A	0.108	0.126	0.117	0.003	124	2	2
B	0.074	0.092	0.083	0.003	134	0	0
C	0.243	0.285	0.264	0.007	126	2	2
D	0.143	0.167	0.155	0.004	126	0	0
E	0.063	0.075	0.069	0.002	130	0	0

Notes: Z score is your reported analytical result compared to the mean in terms of the standard deviation, calculated as (Result-Mean)/StdDev.
 The parameter n is the number of results reported which are used to calculate the second iteration mean and standard deviation.

Florida Department of Law Enforcement

Alcohol Testing Program

BLOOD ALCOHOL PROFICIENCY INITIAL TEST OUTCOME REPORT

Proficiency Cycle 18C1

Receive Results By: 4/27/2018

Participation Number 15223

Method GC

Analyst Name Troescher, Lisa

Your 18C1 proficiency test outcome is Satisfactory

Evaluation Procedure

First iteration: For each level, the qualified results reported by participating analysts and reference labs are pooled, the mean, standard deviation and acceptable range are calculated using truncation, and results outside the acceptable range are excluded from the second iteration.

Second iteration: The mean, standard deviation and acceptable range are recalculated using truncation, every analyst's qualified results are compared to the recalculated acceptable range, and every analyst is assigned an outcome for the proficiency cycle. All analysts with Results Outside Acceptable Range receive retest samples. The retest results are compared to the acceptable range established by the initial test and the retested analyst's outcome for the proficiency cycle is assigned based on the second comparison.

Type Test	Level ID	Vial Number	Results #1 Reported (g/dL)	#1 Z Score	Results #2 Reported (g/dL)	#2 Z Score
Initial	B	1231	0.083	0.0	0.085	0.7
Initial	E	1525	0.069	0.0	0.070	0.5

Proficiency Cycle Statistics

Level	Lower Limit	Upper Limit	Mean (Average)	Std Dev	N	Number Out of Range	
						1st Iter	2nd Iter
A	0.108	0.126	0.117	0.003	124	2	2
B	0.074	0.092	0.083	0.003	134	0	0
C	0.243	0.285	0.264	0.007	126	2	2
D	0.143	0.167	0.155	0.004	126	0	0
E	0.063	0.075	0.069	0.002	128	0	0

Notes: Z score is your reported analytical result compared to the mean in terms of the standard deviation, calculated as (Result-Mean)/StdDev.
The parameter n is the number of results reported which are used to calculate the second iteration mean and standard deviation.

Florida Department of Law Enforcement

Alcohol Testing Program

BLOOD ALCOHOL PROFICIENCY INITIAL TEST OUTCOME REPORT

Proficiency Cycle 18C1

Receive Results By: 4/27/2018

Participation Number 15249

Method GC

Analyst Name Truong, Phuong

Your 18C1 proficiency test outcome is Satisfactory

Evaluation Procedure

First iteration: For each level, the qualified results reported by participating analysts and reference labs are pooled, the mean, standard deviation and acceptable range are calculated using truncation, and results outside the acceptable range are excluded from the second iteration.

Second iteration: The mean, standard deviation and acceptable range are recalculated using truncation, every analyst's qualified results are compared to the recalculated acceptable range, and every analyst is assigned an outcome for the proficiency cycle. All analysts with Results Outside Acceptable Range receive retest samples. The retest results are compared to the acceptable range established by the initial test and the retested analyst's outcome for the proficiency cycle is assigned based on the second comparison.

Type Test	Level ID	Vial Number	Results #1 Reported (g/dL)	#1 Z Score	Results #2 Reported (g/dL)	#2 Z Score
Initial	C	1324	0.261	-0.3	0.266	0.4
Initial	E	1526	0.073	2.0	0.070	0.5

Proficiency Cycle Statistics

Level	Lower Limit	Upper Limit	Mean (Average)	Std Dev	N	Number Out of Range	
						1st Iter	2nd Iter
A	0.108	0.126	0.117	0.003	124	2	2
B	0.074	0.092	0.083	0.003	134	0	0
C	0.243	0.285	0.264	0.007	126	2	2
D	0.143	0.167	0.155	0.004	126	0	0
E	0.063	0.075	0.069	0.002	128	0	0

Notes: Z score is your reported analytical result compared to the mean in terms of the standard deviation, calculated as (Result-Mean)/StdDev.
The parameter n is the number of results reported which are used to calculate the second iteration mean and standard deviation.

Florida Department of Law Enforcement

Alcohol Testing Program

BLOOD ALCOHOL PROFICIENCY INITIAL TEST OUTCOME REPORT

Proficiency Cycle 18C1

Receive Results By: 4/27/2018

Participation Number 15250

Method GC

Analyst Name Walsh, Erin

Your 18C1 proficiency test outcome is Unsatisfactory

Evaluation Procedure

First iteration: For each level, the qualified results reported by participating analysts and reference labs are pooled, the mean, standard deviation and acceptable range are calculated using truncation, and results outside the acceptable range are excluded from the second iteration.

Second iteration: The mean, standard deviation and acceptable range are recalculated using truncation, every analyst's qualified results are compared to the recalculated acceptable range, and every analyst is assigned an outcome for the proficiency cycle. All analysts with Results Outside Acceptable Range receive retest samples. The retest results are compared to the acceptable range established by the initial test and the retested analyst's outcome for the proficiency cycle is assigned based on the second comparison.

Type Test	Level ID	Vial Number	Results #1 Reported (g/dL)	#1 Z Score	Results #2 Reported (g/dL)	#2 Z Score
Initial	A	1126	0.000	-39.0	0.000	-39.0
Initial	D	1425	0.000	-38.8	0.000	-38.8

Proficiency Cycle Statistics

Level	Lower Limit	Upper Limit	Mean (Average)	Std Dev	N	Number Out of Range	
						1st Iter	2nd Iter
A	0.108	0.126	0.117	0.003	124	2	2
B	0.074	0.092	0.083	0.003	134	0	0
C	0.243	0.285	0.264	0.007	126	2	2
D	0.143	0.167	0.155	0.004	126	0	0
E	0.063	0.075	0.069	0.002	128	0	0

Notes: Z score is your reported analytical result compared to the mean in terms of the standard deviation, calculated as (Result-Mean)/StdDev.
The parameter n is the number of results reported which are used to calculate the second iteration mean and standard deviation.

Florida Department of Law Enforcement

Alcohol Testing Program

BLOOD ALCOHOL PROFICIENCY INITIAL TEST OUTCOME REPORT

Proficiency Cycle 18C1

Receive Results By: 4/27/2018

Participation Number 15267

Method GC

Analyst Name Warner, Ryan

Your 18C1 proficiency test outcome is Satisfactory

Evaluation Procedure

First iteration: For each level, the qualified results reported by participating analysts and reference labs are pooled, the mean, standard deviation and acceptable range are calculated using truncation, and results outside the acceptable range are excluded from the second iteration.

Second iteration: The mean, standard deviation and acceptable range are recalculated using truncation, every analyst's qualified results are compared to the recalculated acceptable range, and every analyst is assigned an outcome for the proficiency cycle. All analysts with Results Outside Acceptable Range receive retest samples. The retest results are compared to the acceptable range established by the initial test and the retested analyst's outcome for the proficiency cycle is assigned based on the second comparison.

Type Test	Level ID	Vial Number	Results #1 Reported (g/dL)	#1 Z Score	Results #2 Reported (g/dL)	#2 Z Score
Initial	C	1325	0.265	0.3	0.270	1.0
Initial	D	1426	0.157	0.5	0.158	0.8

Proficiency Cycle Statistics

Level	Lower Limit	Upper Limit	Mean (Average)	Std Dev	N	Number Out of Range	
						1st Iter	2nd Iter
A	0.108	0.126	0.117	0.003	124	2	2
B	0.074	0.092	0.083	0.003	134	0	0
C	0.243	0.285	0.264	0.007	126	2	2
D	0.143	0.167	0.155	0.004	126	0	0
E	0.063	0.075	0.069	0.002	128	0	0

Notes: Z score is your reported analytical result compared to the mean in terms of the standard deviation, calculated as (Result-Mean)/StdDev.
The parameter n is the number of results reported which are used to calculate the second iteration mean and standard deviation.

Florida Department of Law Enforcement

Alcohol Testing Program

BLOOD ALCOHOL PROFICIENCY INITIAL TEST OUTCOME REPORT

Proficiency Cycle 18C1

Receive Results By: 4/27/2018

Participation Number 15051

Method GC

Analyst Name Warner (AA-4), Ryan

Your 18C1 proficiency test outcome is Satisfactory

Evaluation Procedure

First iteration: For each level, the qualified results reported by participating analysts and reference labs are pooled, the mean, standard deviation and acceptable range are calculated using truncation, and results outside the acceptable range are excluded from the second iteration.

Second iteration: The mean, standard deviation and acceptable range are recalculated using truncation, every analyst's qualified results are compared to the recalculated acceptable range, and every analyst is assigned an outcome for the proficiency cycle. All analysts with Results Outside Acceptable Range receive retest samples. The retest results are compared to the acceptable range established by the initial test and the retested analyst's outcome for the proficiency cycle is assigned based on the second comparison.

Type Test	Level ID	Vial Number	Results #1 Reported (g/dL)	#1 Z Score	Results #2 Reported (g/dL)	#2 Z Score
Initial	A	1127	0.117	0.0	0.118	0.3
Initial	E	1527	0.069	0.0	0.069	0.0

Proficiency Cycle Statistics

Level	Lower Limit	Upper Limit	Mean (Average)	Std Dev	N	Number Out of Range	
						1st Iter	2nd Iter
A	0.108	0.126	0.117	0.003	124	2	2
B	0.074	0.092	0.083	0.003	134	0	0
C	0.243	0.285	0.264	0.007	126	2	2
D	0.143	0.167	0.155	0.004	126	0	0
E	0.063	0.075	0.069	0.002	128	0	0

Notes: Z score is your reported analytical result compared to the mean in terms of the standard deviation, calculated as (Result-Mean)/StdDev.
The parameter n is the number of results reported which are used to calculate the second iteration mean and standard deviation.

Florida Department of Law Enforcement

Alcohol Testing Program

BLOOD ALCOHOL PROFICIENCY INITIAL TEST OUTCOME REPORT

Proficiency Cycle 18C1

Receive Results By: 4/27/2018

Participation Number 15231

Method GC

Analyst Name Wells (HS108), Crystal

Your 18C1 proficiency test outcome is Satisfactory

Evaluation Procedure

First iteration: For each level, the qualified results reported by participating analysts and reference labs are pooled, the mean, standard deviation and acceptable range are calculated using truncation, and results outside the acceptable range are excluded from the second iteration.

Second iteration: The mean, standard deviation and acceptable range are recalculated using truncation, every analyst's qualified results are compared to the recalculated acceptable range, and every analyst is assigned an outcome for the proficiency cycle. All analysts with Results Outside Acceptable Range receive retest samples. The retest results are compared to the acceptable range established by the initial test and the retested analyst's outcome for the proficiency cycle is assigned based on the second comparison.

Type Test	Level ID	Vial Number	Results #1 Reported (g/dL)	#1 Z Score	Results #2 Reported (g/dL)	#2 Z Score
Initial	C	1326	0.267	0.6	0.269	0.9
Initial	E	1528	0.072	1.5	0.072	1.5

Proficiency Cycle Statistics

Level	Lower Limit	Upper Limit	Mean (Average)	Std Dev	N	Number Out of Range	
						1st Iter	2nd Iter
A	0.108	0.126	0.117	0.003	124	2	2
B	0.074	0.092	0.083	0.003	134	0	0
C	0.243	0.285	0.264	0.007	126	2	2
D	0.143	0.167	0.155	0.004	126	0	0
E	0.063	0.075	0.069	0.002	128	0	0

Notes: Z score is your reported analytical result compared to the mean in terms of the standard deviation, calculated as (Result-Mean)/StdDev.
The parameter n is the number of results reported which are used to calculate the second iteration mean and standard deviation.

Florida Department of Law Enforcement

Alcohol Testing Program

BLOOD ALCOHOL PROFICIENCY INITIAL TEST OUTCOME REPORT

Proficiency Cycle 18C1

Receive Results By: 4/27/2018

Participation Number 15230

Method GC

Analyst Name Wells (HS110), Crystal

Your 18C1 proficiency test outcome is Satisfactory

Evaluation Procedure

First iteration: For each level, the qualified results reported by participating analysts and reference labs are pooled, the mean, standard deviation and acceptable range are calculated using truncation, and results outside the acceptable range are excluded from the second iteration.

Second iteration: The mean, standard deviation and acceptable range are recalculated using truncation, every analyst's qualified results are compared to the recalculated acceptable range, and every analyst is assigned an outcome for the proficiency cycle. All analysts with Results Outside Acceptable Range receive retest samples. The retest results are compared to the acceptable range established by the initial test and the retested analyst's outcome for the proficiency cycle is assigned based on the second comparison.

Type Test	Level ID	Vial Number	Results #1 Reported (g/dL)	#1 Z Score	Results #2 Reported (g/dL)	#2 Z Score
Initial	A	1128	0.117	0.0	0.118	0.3
Initial	D	1427	0.156	0.3	0.156	0.3

Proficiency Cycle Statistics

Level	Lower Limit	Upper Limit	Mean (Average)	Std Dev	N	Number Out of Range	
						1st Iter	2nd Iter
A	0.108	0.126	0.117	0.003	124	2	2
B	0.074	0.092	0.083	0.003	134	0	0
C	0.243	0.285	0.264	0.007	126	2	2
D	0.143	0.167	0.155	0.004	126	0	0
E	0.063	0.075	0.069	0.002	128	0	0

Notes: Z score is your reported analytical result compared to the mean in terms of the standard deviation, calculated as (Result-Mean)/StdDev.
The parameter n is the number of results reported which are used to calculate the second iteration mean and standard deviation.

Florida Department of Law Enforcement

Alcohol Testing Program

BLOOD ALCOHOL PROFICIENCY INITIAL TEST OUTCOME REPORT

Proficiency Cycle 18C1

Receive Results By: 4/27/2018

Participation Number 15248

Method GC

Analyst Name Wirth, Nicole

Your 18C1 proficiency test outcome is Satisfactory

Evaluation Procedure

First iteration: For each level, the qualified results reported by participating analysts and reference labs are pooled, the mean, standard deviation and acceptable range are calculated using truncation, and results outside the acceptable range are excluded from the second iteration.

Second iteration: The mean, standard deviation and acceptable range are recalculated using truncation, every analyst's qualified results are compared to the recalculated acceptable range, and every analyst is assigned an outcome for the proficiency cycle. All analysts with Results Outside Acceptable Range receive retest samples. The retest results are compared to the acceptable range established by the initial test and the retested analyst's outcome for the proficiency cycle is assigned based on the second comparison.

Type Test	Level ID	Vial Number	Results #1 Reported (g/dL)	#1 Z Score	Results #2 Reported (g/dL)	#2 Z Score
Initial	C	1327	0.274	1.6	0.267	0.6
Initial	E	1529	0.074	2.5	0.071	1.0

Proficiency Cycle Statistics

Level	Lower Limit	Upper Limit	Mean (Average)	Std Dev	N	Number Out of Range	
						1st Iter	2nd Iter
A	0.108	0.126	0.117	0.003	124	2	2
B	0.074	0.092	0.083	0.003	134	0	0
C	0.243	0.285	0.264	0.007	126	2	2
D	0.143	0.167	0.155	0.004	126	0	0
E	0.063	0.075	0.069	0.002	128	0	0

Notes: Z score is your reported analytical result compared to the mean in terms of the standard deviation, calculated as (Result-Mean)/StdDev.

The parameter n is the number of results reported which are used to calculate the second iteration mean and standard deviation.

Florida Department of Law Enforcement

Alcohol Testing Program

BLOOD ALCOHOL PROFICIENCY INITIAL TEST OUTCOME REPORT

Proficiency Cycle 18C1

Receive Results By: 4/27/2018

Participation Number 15123

Method GC

Analyst Name Yeatman, Dustin

Your 18C1 proficiency test outcome is Satisfactory

Evaluation Procedure

First iteration: For each level, the qualified results reported by participating analysts and reference labs are pooled, the mean, standard deviation and acceptable range are calculated using truncation, and results outside the acceptable range are excluded from the second iteration.

Second iteration: The mean, standard deviation and acceptable range are recalculated using truncation, every analyst's qualified results are compared to the recalculated acceptable range, and every analyst is assigned an outcome for the proficiency cycle. All analysts with Results Outside Acceptable Range receive retest samples. The retest results are compared to the acceptable range established by the initial test and the retested analyst's outcome for the proficiency cycle is assigned based on the second comparison.

Type Test	Level ID	Vial Number	Results #1 Reported (g/dL)	#1 Z Score	Results #2 Reported (g/dL)	#2 Z Score
Initial	A	1129	0.117	0.0	0.117	0.0
Initial	C	1328	0.262	-0.1	0.263	0.0

Proficiency Cycle Statistics

Level	Lower Limit	Upper Limit	Mean (Average)	Std Dev	N	Number Out of Range	
						1st Iter	2nd Iter
A	0.108	0.126	0.117	0.003	124	2	2
B	0.074	0.092	0.083	0.003	134	0	0
C	0.243	0.285	0.264	0.007	126	2	2
D	0.143	0.167	0.155	0.004	126	0	0
E	0.063	0.075	0.069	0.002	128	0	0

Notes: Z score is your reported analytical result compared to the mean in terms of the standard deviation, calculated as (Result-Mean)/StdDev.
The parameter n is the number of results reported which are used to calculate the second iteration mean and standard deviation.

Florida Department of Law Enforcement

Alcohol Testing Program

BLOOD ALCOHOL PROFICIENCY INITIAL TEST OUTCOME REPORT

Proficiency Cycle 18C1

Receive Results By: 4/27/2018

Participation Number 15040

Method GC

Analyst Name Zaney, Mary Elizabeth

Your 18C1 proficiency test outcome is Satisfactory

Evaluation Procedure

First iteration: For each level, the qualified results reported by participating analysts and reference labs are pooled, the mean, standard deviation and acceptable range are calculated using truncation, and results outside the acceptable range are excluded from the second iteration.

Second iteration: The mean, standard deviation and acceptable range are recalculated using truncation, every analyst's qualified results are compared to the recalculated acceptable range, and every analyst is assigned an outcome for the proficiency cycle. All analysts with Results Outside Acceptable Range receive retest samples. The retest results are compared to the acceptable range established by the initial test and the retested analyst's outcome for the proficiency cycle is assigned based on the second comparison.

Type Test	Level ID	Vial Number	Results #1 Reported (g/dL)	#1 Z Score	Results #2 Reported (g/dL)	#2 Z Score
Initial	C	1329	0.254	-1.3	0.254	-1.3
Initial	D	1428	0.151	-1.0	0.150	-1.3

Proficiency Cycle Statistics

Level	Lower Limit	Upper Limit	Mean (Average)	Std Dev	N	Number Out of Range	
						1st Iter	2nd Iter
A	0.108	0.126	0.117	0.003	124	2	2
B	0.074	0.092	0.083	0.003	134	0	0
C	0.243	0.285	0.264	0.007	126	2	2
D	0.143	0.167	0.155	0.004	126	0	0
E	0.063	0.075	0.069	0.002	128	0	0

Notes: Z score is your reported analytical result compared to the mean in terms of the standard deviation, calculated as (Result-Mean)/StdDev.
The parameter n is the number of results reported which are used to calculate the second iteration mean and standard deviation.

Florida Department of Law Enforcement

Alcohol Testing Program

BLOOD ALCOHOL PROFICIENCY INITIAL TEST OUTCOME REPORT

Proficiency Cycle 18C1

Receive Results By: 4/27/2018

Participation Number 15272

Method GC

Analyst Name Zumaeta, Edward

Your 18C1 proficiency test outcome is Satisfactory

Evaluation Procedure

First iteration: For each level, the qualified results reported by participating analysts and reference labs are pooled, the mean, standard deviation and acceptable range are calculated using truncation, and results outside the acceptable range are excluded from the second iteration.

Second iteration: The mean, standard deviation and acceptable range are recalculated using truncation, every analyst's qualified results are compared to the recalculated acceptable range, and every analyst is assigned an outcome for the proficiency cycle. All analysts with Results Outside Acceptable Range receive retest samples. The retest results are compared to the acceptable range established by the initial test and the retested analyst's outcome for the proficiency cycle is assigned based on the second comparison.

Type Test	Level ID	Vial Number	Results #1 Reported (g/dL)	#1 Z Score	Results #2 Reported (g/dL)	#2 Z Score
Initial	A	1130	0.116	-0.3	0.117	0.0
Initial	B	1232	0.083	0.0	0.082	-0.3

Proficiency Cycle Statistics

Level	Lower Limit	Upper Limit	Mean (Average)	Std Dev	N	Number Out of Range	
						1st Iter	2nd Iter
A	0.108	0.126	0.117	0.003	124	2	2
B	0.074	0.092	0.083	0.003	134	0	0
C	0.243	0.285	0.264	0.007	126	2	2
D	0.143	0.167	0.155	0.004	126	0	0
E	0.063	0.075	0.069	0.002	128	0	0

Notes: Z score is your reported analytical result compared to the mean in terms of the standard deviation, calculated as (Result-Mean)/StdDev.
The parameter n is the number of results reported which are used to calculate the second iteration mean and standard deviation.

Florida Department of Law Enforcement

Alcohol Testing Program

BLOOD ALCOHOL PROFICIENCY INITIAL TEST OUTCOME REPORT

Proficiency Cycle 18C1 Receive Results By: 4/27/2018 Participation Number 15206 Method GC
 Analyst Name Zumaeta (AA-4), Edward

Your 18C1 proficiency test outcome is Satisfactory

Evaluation Procedure

First iteration: For each level, the qualified results reported by participating analysts and reference labs are pooled, the mean, standard deviation and acceptable range are calculated using truncation, and results outside the acceptable range are excluded from the second iteration.

Second iteration: The mean, standard deviation and acceptable range are recalculated using truncation, every analyst's qualified results are compared to the recalculated acceptable range, and every analyst is assigned an outcome for the proficiency cycle. All analysts with Results Outside Acceptable Range receive retest samples. The retest results are compared to the acceptable range established by the initial test and the retested analyst's outcome for the proficiency cycle is assigned based on the second comparison.

Type Test	Level ID	Vial Number	Results #1 Reported (g/dL)	#1 Z Score	Results #2 Reported (g/dL)	#2 Z Score
Initial	C	1330	0.265	0.3	0.266	0.4
Initial	D	1429	0.156	0.3	0.157	0.5

Proficiency Cycle Statistics

Level	Lower Limit	Upper Limit	Mean (Average)	Std Dev	N	Number Out of Range	
						1st Iter	2nd Iter
A	0.108	0.126	0.117	0.003	124	2	2
B	0.074	0.092	0.083	0.003	134	0	0
C	0.243	0.285	0.264	0.007	126	2	2
D	0.143	0.167	0.155	0.004	126	0	0
E	0.063	0.075	0.069	0.002	128	0	0

Notes: Z score is your reported analytical result compared to the mean in terms of the standard deviation, calculated as (Result-Mean)/StdDev.
 The parameter n is the number of results reported which are used to calculate the second iteration mean and standard deviation.

Florida Department of Law Enforcement

Alcohol Testing Program

BLOOD ALCOHOL PROFICIENCY INITIAL TEST OUTCOME REPORT

Proficiency Cycle 18C1 Receive Results By: 4/27/2018 Participation Number 15002 Method GC
 Analyst Name Centre of Forensic Science

Your 18C1 proficiency test outcome is: **Satisfactory**

Evaluation Procedure

First iteration: For each level, the qualified results reported by participating analysts and reference labs are pooled, the mean, standard deviation and acceptable range are calculated using truncation, and results outside the acceptable range are excluded from the second iteration.

Second iteration: The mean, standard deviation and acceptable range are recalculated using truncation, every analyst's qualified results are compared to the recalculated acceptable range, and every analyst is assigned an outcome for the proficiency cycle. All analysts with Results Outside Acceptable Range receive retest samples. The retest results are compared to the acceptable range established by the initial test and the retested analyst's outcome for the proficiency cycle is assigned based on the second comparison.

Type Test	Level ID	Vial Number	Results #1 Reported (g/dL)	#1 Z Score	Results #2 Reported (g/dL)	#2 Z Score
Initial	A	1141	0.116	-0.3	0.118	0.3
Initial	B	1243	0.083	0.0	0.083	0.0
Initial	C	1341	0.263	0.0	0.266	0.4
Initial	D	1440	0.155	0.0	0.161	1.5
Initial	E	1540	0.068	-0.5	0.068	-0.5

Proficiency Cycle Statistics

Level	Lower Limit	Upper Limit	Mean (Average)	Std Dev	N	Number Out of Range	
						1st Iter	2nd Iter
A	0.108	0.126	0.117	0.003	124	2	2
B	0.074	0.092	0.083	0.003	134	0	0
C	0.243	0.285	0.264	0.007	126	2	2
D	0.143	0.167	0.155	0.004	126	0	0
E	0.063	0.075	0.069	0.002	128	0	0

Notes: Z score is your reported analytical result compared to the mean in terms of the standard deviation, calculated as (Result-Mean)/StdDev.
 The parameter n is the number of results reported which are used to calculate the second iteration mean and standard deviation.

Florida Department of Law Enforcement

Alcohol Testing Program

BLOOD ALCOHOL PROFICIENCY INITIAL TEST OUTCOME REPORT

Proficiency Cycle 18C1

Receive Results By: 4/27/2018

Participation Number 15003

Method GC

Analyst Name Centre of Forensic Sciences-Toronto

Your 18C1 proficiency test outcome is: **Satisfactory**

Evaluation Procedure

First iteration: For each level, the qualified results reported by participating analysts and reference labs are pooled, the mean, standard deviation and acceptable range are calculated using truncation, and results outside the acceptable range are excluded from the second iteration.

Second iteration: The mean, standard deviation and acceptable range are recalculated using truncation, every analyst's qualified results are compared to the recalculated acceptable range, and every analyst is assigned an outcome for the proficiency cycle. All analysts with Results Outside Acceptable Range receive retest samples. The retest results are compared to the acceptable range established by the initial test and the retested analyst's outcome for the proficiency cycle is assigned based on the second comparison.

Type Test	Level ID	Vial Number	Results #1 Reported (g/dL)	#1 Z Score	Results #2 Reported (g/dL)	#2 Z Score
Initial	A	1142	0.116	-0.3	0.115	-0.7
Initial	B	1244	0.084	0.3	0.082	-0.3
Initial	C	1342	0.267	0.6	0.265	0.3
Initial	D	1441	0.152	-0.8	0.151	-1.0
Initial	E	1541	0.070	0.5	0.067	-1.0

Proficiency Cycle Statistics

Level	Lower Limit	Upper Limit	Mean (Average)	Std Dev	N	Number Out of Range	
						1st Iter	2nd Iter
A	0.108	0.126	0.117	0.003	124	2	2
B	0.074	0.092	0.083	0.003	134	0	0
C	0.243	0.285	0.264	0.007	126	2	2
D	0.143	0.167	0.155	0.004	126	0	0
E	0.063	0.075	0.069	0.002	128	0	0

Notes: Z score is your reported analytical result compared to the mean in terms of the standard deviation, calculated as (Result-Mean)/StdDev.
The parameter n is the number of results reported which are used to calculate the second iteration mean and standard deviation.

Florida Department of Law Enforcement

Alcohol Testing Program

BLOOD ALCOHOL PROFICIENCY INITIAL TEST OUTCOME REPORT

Proficiency Cycle 18C1

Receive Results By: 4/27/2018

Participation Number 15005

Method GC

Analyst Name Maine Department of Human Services

Your 18C1 proficiency test outcome is: **Satisfactory**

Evaluation Procedure

First iteration: For each level, the qualified results reported by participating analysts and reference labs are pooled, the mean, standard deviation and acceptable range are calculated using truncation, and results outside the acceptable range are excluded from the second iteration.

Second iteration: The mean, standard deviation and acceptable range are recalculated using truncation, every analyst's qualified results are compared to the recalculated acceptable range, and every analyst is assigned an outcome for the proficiency cycle. All analysts with Results Outside Acceptable Range receive retest samples. The retest results are compared to the acceptable range established by the initial test and the retested analyst's outcome for the proficiency cycle is assigned based on the second comparison.

Type Test	Level ID	Vial Number	Results #1 Reported (g/dL)	#1 Z Score	Results #2 Reported (g/dL)	#2 Z Score
Initial	A	1144	0.122	1.7	0.122	1.7
Initial	B	1246	0.089	2.0	0.089	2.0
Initial	C	1344	0.269	0.9	0.275	1.7
Initial	D	1443	0.156	-0.3	0.157	0.5
Initial	E	1543	0.068	-0.5	0.069	0.0

Proficiency Cycle Statistics

Level	Lower Limit	Upper Limit	Mean (Average)	Std Dev	N	Number Out of Range	
						1st Iter	2nd Iter
A	0.108	0.126	0.117	0.003	124	2	2
B	0.074	0.092	0.083	0.003	134	0	0
C	0.243	0.285	0.264	0.007	126	2	2
D	0.143	0.167	0.155	0.004	126	0	0
E	0.063	0.075	0.069	0.002	128	0	0

Notes: Z score is your reported analytical result compared to the mean in terms of the standard deviation, calculated as (Result-Mean)/StdDev
The parameter n is the number of results reported which are used to calculate the second iteration mean and standard deviation.

Florida Department of Law Enforcement

Alcohol Testing Program

BLOOD ALCOHOL PROFICIENCY INITIAL TEST OUTCOME REPORT

Proficiency Cycle 18C1

Receive Results By: 4/27/2018

Participation Number 15009

Method GC

Analyst Name Office of Attorney General-North Dakota

Your 18C1 proficiency test outcome is: **Satisfactory**

Evaluation Procedure

First iteration: For each level, the qualified results reported by participating analysts and reference labs are pooled, the mean, standard deviation and acceptable range are calculated using truncation, and results outside the acceptable range are excluded from the second iteration.

Second iteration: The mean, standard deviation and acceptable range are recalculated using truncation, every analyst's qualified results are compared to the recalculated acceptable range, and every analyst is assigned an outcome for the proficiency cycle. All analysts with Results Outside Acceptable Range receive retest samples. The retest results are compared to the acceptable range established by the initial test and the retested analyst's outcome for the proficiency cycle is assigned based on the second comparison.

Type Test	Level ID	Vial Number	Results #1 Reported (g/dL)	#1 Z Score	Results #2 Reported (g/dL)	#2 Z Score
Initial	A	1148	0.116	-0.3	0.116	-0.3
Initial	B	1250	0.084	0.3	0.084	0.3
Initial	C	1348	0.263	0.0	0.263	0.0
Initial	D	1447	0.156	0.3	0.156	0.3
Initial	E	1547	0.068	-0.5	0.068	-0.5

Proficiency Cycle Statistics

Level	Lower Limit	Upper Limit	Mean (Average)	Std Dev	N	Number Out of Range	
						1st Iter	2nd Iter
A	0.108	0.126	0.117	0.003	124	2	2
B	0.074	0.092	0.083	0.003	134	0	0
C	0.243	0.285	0.264	0.007	126	2	2
D	0.143	0.167	0.155	0.004	126	0	0
E	0.063	0.075	0.069	0.002	128	0	0

Notes: Z score is your reported analytical result compared to the mean in terms of the standard deviation, calculated as (Result-Mean)/StdDev.
The parameter n is the number of results reported which are used to calculate the second iteration mean and standard deviation.

Florida Department of Law Enforcement

Alcohol Testing Program

BLOOD ALCOHOL PROFICIENCY INITIAL TEST OUTCOME REPORT

Proficiency Cycle 18C1

Receive Results By: 4/27/2018

Participation Number 15010

Method GC

Analyst Name Pennsylvania Department of Health

Your 18C1 proficiency test outcome is: **Satisfactory**

Evaluation Procedure

First iteration: For each level, the qualified results reported by participating analysts and reference labs are pooled, the mean, standard deviation and acceptable range are calculated using truncation, and results outside the acceptable range are excluded from the second iteration.

Second iteration: The mean, standard deviation and acceptable range are recalculated using truncation, every analyst's qualified results are compared to the recalculated acceptable range, and every analyst is assigned an outcome for the proficiency cycle. All analysts with Results Outside Acceptable Range receive retest samples. The retest results are compared to the acceptable range established by the initial test and the retested analyst's outcome for the proficiency cycle is assigned based on the second comparison.

Type Test	Level ID	Vial Number	Results #1 Reported (g/dL)	#1 Z Score	Results #2 Reported (g/dL)	#2 Z Score
Initial	A	1149	0.117	0.0	0.117	0.0
Initial	B	1251	0.084	0.3	0.085	0.7
Initial	C	1349	0.272	1.3	0.269	0.9
Initial	D	1448	0.158	0.8	0.158	0.8
Initial	E	1548	0.070	0.5	0.069	0.0

Proficiency Cycle Statistics

Level	Lower Limit	Upper Limit	Mean (Average)	Std Dev	N	Number Out of Range	
						1st Iter	2nd Iter
A	0.108	0.126	0.117	0.003	124	2	2
B	0.074	0.092	0.083	0.003	134	0	0
C	0.243	0.285	0.264	0.007	126	2	2
D	0.143	0.167	0.155	0.004	126	0	0
E	0.063	0.075	0.069	0.002	128	0	0

Notes: Z score is your reported analytical result compared to the mean in terms of the standard deviation, calculated as (Result-Mean)/StdDev.
The parameter n is the number of results reported which are used to calculate the second iteration mean and standard deviation.

Florida Department of Law Enforcement

Alcohol Testing Program

BLOOD ALCOHOL PROFICIENCY INITIAL TEST OUTCOME REPORT

Proficiency Cycle 18C1 Receive Results By: 4/27/2018 Participation Number 15016 Method GC
 Analyst Name RCMP Forensic Laboratory -Vancouver

Your 18C1 proficiency test outcome is: **Satisfactory**

Evaluation Procedure

First iteration: For each level, the qualified results reported by participating analysts and reference labs are pooled, the mean, standard deviation and acceptable range are calculated using truncation, and results outside the acceptable range are excluded from the second iteration.

Second iteration: The mean, standard deviation and acceptable range are recalculated using truncation, every analyst's qualified results are compared to the recalculated acceptable range, and every analyst is assigned an outcome for the proficiency cycle. All analysts with Results Outside Acceptable Range receive retest samples. The retest results are compared to the acceptable range established by the initial test and the retested analyst's outcome for the proficiency cycle is assigned based on the second comparison.

Type Test	Level ID	Vial Number	Results #1 Reported (g/dL)	#1 Z Score	Results #2 Reported (g/dL)	#2 Z Score
Initial	A	1159	0.115	-0.7	0.116	-0.3
Initial	B	1261	0.081	-0.7	0.082	-0.3
Initial	C	1359	0.265	0.3	0.261	-0.3
Initial	D	1458	0.154	-0.3	0.155	0.0
Initial	E	1558	0.068	-0.5	0.069	0.0

Proficiency Cycle Statistics

Level	Lower Limit	Upper Limit	Mean (Average)	Std Dev	N	Number Out of Range	
						1st Iter	2nd Iter
A	0.108	0.126	0.117	0.003	124	2	2
B	0.074	0.092	0.083	0.003	134	0	0
C	0.243	0.285	0.264	0.007	126	2	2
D	0.143	0.167	0.155	0.004	126	0	0
E	0.063	0.075	0.069	0.002	128	0	0

Notes: Z score is your reported analytical result compared to the mean in terms of the standard deviation, calculated as (Result-Mean)/StdDev.
 The parameter n is the number of results reported which are used to calculate the second iteration mean and standard deviation.

Florida Department of Law Enforcement

Alcohol Testing Program

BLOOD ALCOHOL PROFICIENCY INITIAL TEST OUTCOME REPORT

Proficiency Cycle 18C1 Receive Results By: 4/27/2018 Participation Number 15017 Method GC
 Analyst Name RCMP Forensic Laboratory -Vancouver

Your 18C1 proficiency test outcome is: **Satisfactory**

Evaluation Procedure

First iteration: For each level, the qualified results reported by participating analysts and reference labs are pooled, the mean, standard deviation and acceptable range are calculated using truncation, and results outside the acceptable range are excluded from the second iteration.

Second iteration: The mean, standard deviation and acceptable range are recalculated using truncation, every analyst's qualified results are compared to the recalculated acceptable range, and every analyst is assigned an outcome for the proficiency cycle. All analysts with Results Outside Acceptable Range receive retest samples. The retest results are compared to the acceptable range established by the initial test and the retested analyst's outcome for the proficiency cycle is assigned based on the second comparison.

Type Test	Level ID	Vial Number	Results #1 Reported (g/dL)	#1 Z Score	Results #2 Reported (g/dL)	#2 Z Score
Initial	A	1160	0.117	0.0	0.116	-0.3
Initial	B	1262	0.083	0.0	0.084	0.3
Initial	C	1360	0.267	0.6	0.266	0.4
Initial	D	1459	0.156	0.3	0.156	0.3
Initial	E	1559	0.068	-0.5	0.069	0.0

Proficiency Cycle Statistics

Level	Lower Limit	Upper Limit	Mean (Average)	Std Dev	N	Number Out of Range	
						1st Iter	2nd Iter
A	0.108	0.126	0.117	0.003	124	2	2
B	0.074	0.092	0.083	0.003	134	0	0
C	0.243	0.285	0.264	0.007	126	2	2
D	0.143	0.167	0.155	0.004	126	0	0
E	0.063	0.075	0.069	0.002	128	0	0

Notes: Z score is your reported analytical result compared to the mean in terms of the standard deviation, calculated as (Result-Mean)/StdDev.
 The parameter n is the number of results reported which are used to calculate the second iteration mean and standard deviation.

Florida Department of Law Enforcement

Alcohol Testing Program

BLOOD ALCOHOL PROFICIENCY INITIAL TEST OUTCOME REPORT

Proficiency Cycle 18C1

Receive Results By: 4/27/2018

Participation Number 15018

Method GC

Analyst Name RCMP Forensic Laboratory -Ottawa

Your 18C1 proficiency test outcome is: **Satisfactory**

Evaluation Procedure

First iteration: For each level, the qualified results reported by participating analysts and reference labs are pooled, the mean, standard deviation and acceptable range are calculated using truncation, and results outside the acceptable range are excluded from the second iteration.

Second iteration: The mean, standard deviation and acceptable range are recalculated using truncation, every analyst's qualified results are compared to the recalculated acceptable range, and every analyst is assigned an outcome for the proficiency cycle. All analysts with Results Outside Acceptable Range receive retest samples. The retest results are compared to the acceptable range established by the initial test and the retested analyst's outcome for the proficiency cycle is assigned based on the second comparison.

Type Test	Level ID	Vial Number	Results #1 Reported (g/dL)	#1 Z Score	Results #2 Reported (g/dL)	#2 Z Score
Initial	A	1158	0.115	-0.7	0.115	-0.7
Initial	B	1260	0.082	-0.3	0.081	-0.7
Initial	C	1358	0.263	0.0	0.262	-0.1
Initial	D	1457	0.153	-0.5	0.153	-0.5
Initial	E	1557	0.066	-1.5	0.066	-1.5

Proficiency Cycle Statistics

Level	Lower Limit	Upper Limit	Mean (Average)	Std Dev	N	Number Out of Range	
						1st Iter	2nd Iter
A	0.108	0.126	0.117	0.003	124	2	2
B	0.074	0.092	0.083	0.003	134	0	0
C	0.243	0.285	0.264	0.007	126	2	2
D	0.143	0.167	0.155	0.004	126	0	0
E	0.063	0.075	0.069	0.002	128	0	0

Notes: Z score is your reported analytical result compared to the mean in terms of the standard deviation, calculated as (Result-Mean)/StdDev.
The parameter n is the number of results reported which are used to calculate the second iteration mean and standard deviation.

Florida Department of Law Enforcement

Alcohol Testing Program

BLOOD ALCOHOL PROFICIENCY INITIAL TEST OUTCOME REPORT

Proficiency Cycle 18C1

Receive Results By: 4/27/2018

Participation Number 15019

Method GC

Analyst Name RCMP Forensic Laboratory -Ottawa

Your 18C1 proficiency test outcome is: **Satisfactory**

Evaluation Procedure

First iteration: For each level, the qualified results reported by participating analysts and reference labs are pooled, the mean, standard deviation and acceptable range are calculated using truncation, and results outside the acceptable range are excluded from the second iteration.

Second iteration: The mean, standard deviation and acceptable range are recalculated using truncation, every analyst's qualified results are compared to the recalculated acceptable range, and every analyst is assigned an outcome for the proficiency cycle. All analysts with Results Outside Acceptable Range receive retest samples. The retest results are compared to the acceptable range established by the initial test and the retested analyst's outcome for the proficiency cycle is assigned based on the second comparison.

Type Test	Level ID	Vial Number	Results #1 Reported (g/dL)	#1 Z Score	Results #2 Reported (g/dL)	#2 Z Score
Initial	A	1157	0.116	-0.3	0.116	-0.3
Initial	B	1259	0.083	0.0	0.083	0.0
Initial	C	1357	0.261	-0.3	0.262	-0.1
Initial	D	1456	0.154	-0.3	0.154	-0.3
Initial	E	1556	0.067	-1.0	0.067	-1.0

Proficiency Cycle Statistics

Level	Lower Limit	Upper Limit	Mean (Average)	Std Dev	N	Number Out of Range	
						1st Iter	2nd Iter
A	0.108	0.126	0.117	0.003	124	2	2
B	0.074	0.092	0.083	0.003	134	0	0
C	0.243	0.285	0.264	0.007	126	2	2
D	0.143	0.167	0.155	0.004	126	0	0
E	0.063	0.075	0.069	0.002	128	0	0

Notes: Z score is your reported analytical result compared to the mean in terms of the standard deviation, calculated as (Result-Mean)/StdDev.
The parameter n is the number of results reported which are used to calculate the second iteration mean and standard deviation.

Florida Department of Law Enforcement

Alcohol Testing Program

BLOOD ALCOHOL PROFICIENCY INITIAL TEST OUTCOME REPORT

Proficiency Cycle 18C1 Receive Results By: 4/27/2018 Participation Number 15115 Method GC
 Analyst Name RCMP Forensic Laboratory-Vancouver

Your 18C1 proficiency test outcome is: **Satisfactory**

Evaluation Procedure

First iteration: For each level, the qualified results reported by participating analysts and reference labs are pooled, the mean, standard deviation and acceptable range are calculated using truncation, and results outside the acceptable range are excluded from the second iteration.

Second iteration: The mean, standard deviation and acceptable range are recalculated using truncation, every analyst's qualified results are compared to the recalculated acceptable range, and every analyst is assigned an outcome for the proficiency cycle. All analysts with Results Outside Acceptable Range receive retest samples. The retest results are compared to the acceptable range established by the initial test and the retested analyst's outcome for the proficiency cycle is assigned based on the second comparison.

Type Test	Level ID	Vial Number	Results #1 Reported (g/dL)	#1 Z Score	Results #2 Reported (g/dL)	#2 Z Score
Initial	A	1161	0.117	0.0	0.116	-0.3
Initial	B	1263	0.083	0.0	0.083	0.0
Initial	C	1361	0.263	0.0	0.261	-0.3
Initial	D	1460	0.155	0.0	0.154	-0.3
Initial	E	1560	0.068	-0.5	0.067	-1.0

Proficiency Cycle Statistics

Level	Lower Limit	Upper Limit	Mean (Average)	Std Dev	N	Number Out of Range	
						1st Iter	2nd Iter
A	0.108	0.126	0.117	0.003	124	2	2
B	0.074	0.092	0.083	0.003	134	0	0
C	0.243	0.285	0.264	0.007	126	2	2
D	0.143	0.167	0.155	0.004	126	0	0
E	0.063	0.075	0.069	0.002	128	0	0

Notes: Z score is your reported analytical result compared to the mean in terms of the standard deviation, calculated as (Result-Mean)/StdDev.
 The parameter n is the number of results reported which are used to calculate the second iteration mean and standard deviation.

Florida Department of Law Enforcement

Alcohol Testing Program

BLOOD ALCOHOL PROFICIENCY INITIAL TEST OUTCOME REPORT

Proficiency Cycle 18C1 Receive Results By: 4/27/2018 Participation Number 15177 Method GC
 Analyst Name RCMP Forensic Laboratory- Edmonton

Your 18C1 proficiency test outcome is: **Satisfactory**

Evaluation Procedure

First iteration: For each level, the qualified results reported by participating analysts and reference labs are pooled, the mean, standard deviation and acceptable range are calculated using truncation, and results outside the acceptable range are excluded from the second iteration.

Second iteration: The mean, standard deviation and acceptable range are recalculated using truncation, every analyst's qualified results are compared to the recalculated acceptable range, and every analyst is assigned an outcome for the proficiency cycle. All analysts with Results Outside Acceptable Range receive retest samples. The retest results are compared to the acceptable range established by the initial test and the retested analyst's outcome for the proficiency cycle is assigned based on the second comparison.

Type Test	Level ID	Vial Number	Results #1 Reported (g/dL)	#1 Z Score	Results #2 Reported (g/dL)	#2 Z Score
Initial	A	1156	0.118	0.3	0.119	0.7
Initial	B	1258	0.086	1.0	0.085	0.7
Initial	C	1356	0.266	0.4	0.266	0.4
Initial	D	1455	0.157	0.5	0.157	0.5
Initial	E	1555	0.070	0.5	0.070	0.5

Proficiency Cycle Statistics

Level	Lower Limit	Upper Limit	Mean (Average)	Std Dev	N	Number Out of Range	
						1st Iter	2nd Iter
A	0.108	0.126	0.117	0.003	124	2	2
B	0.074	0.092	0.083	0.003	134	0	0
C	0.243	0.285	0.264	0.007	126	2	2
D	0.143	0.167	0.155	0.004	126	0	0
E	0.063	0.075	0.069	0.002	128	0	0

Notes: Z score is your reported analytical result compared to the mean in terms of the standard deviation, calculated as (Result-Mean)/StdDev.
 The parameter n is the number of results reported which are used to calculate the second iteration mean and standard deviation.